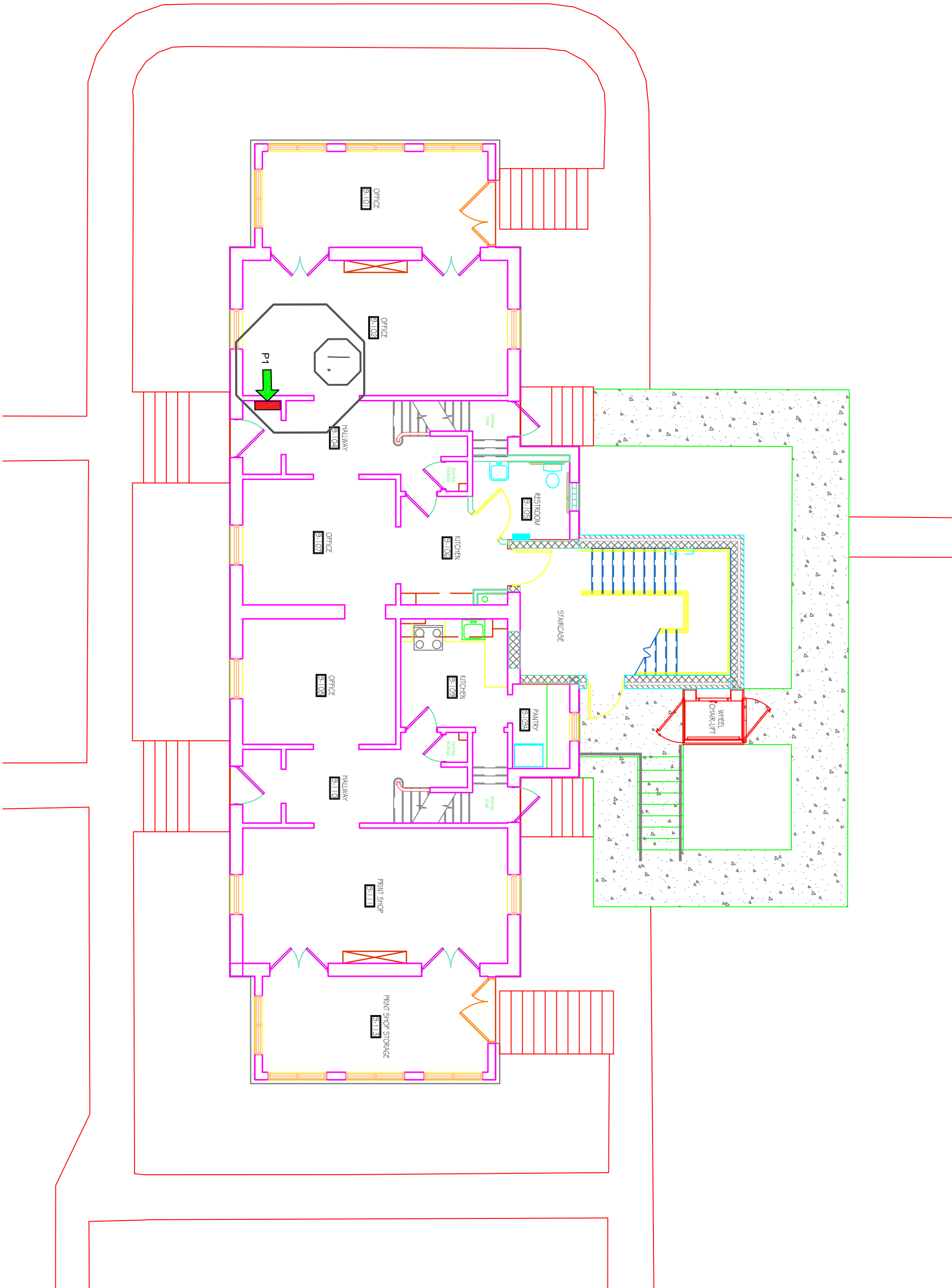
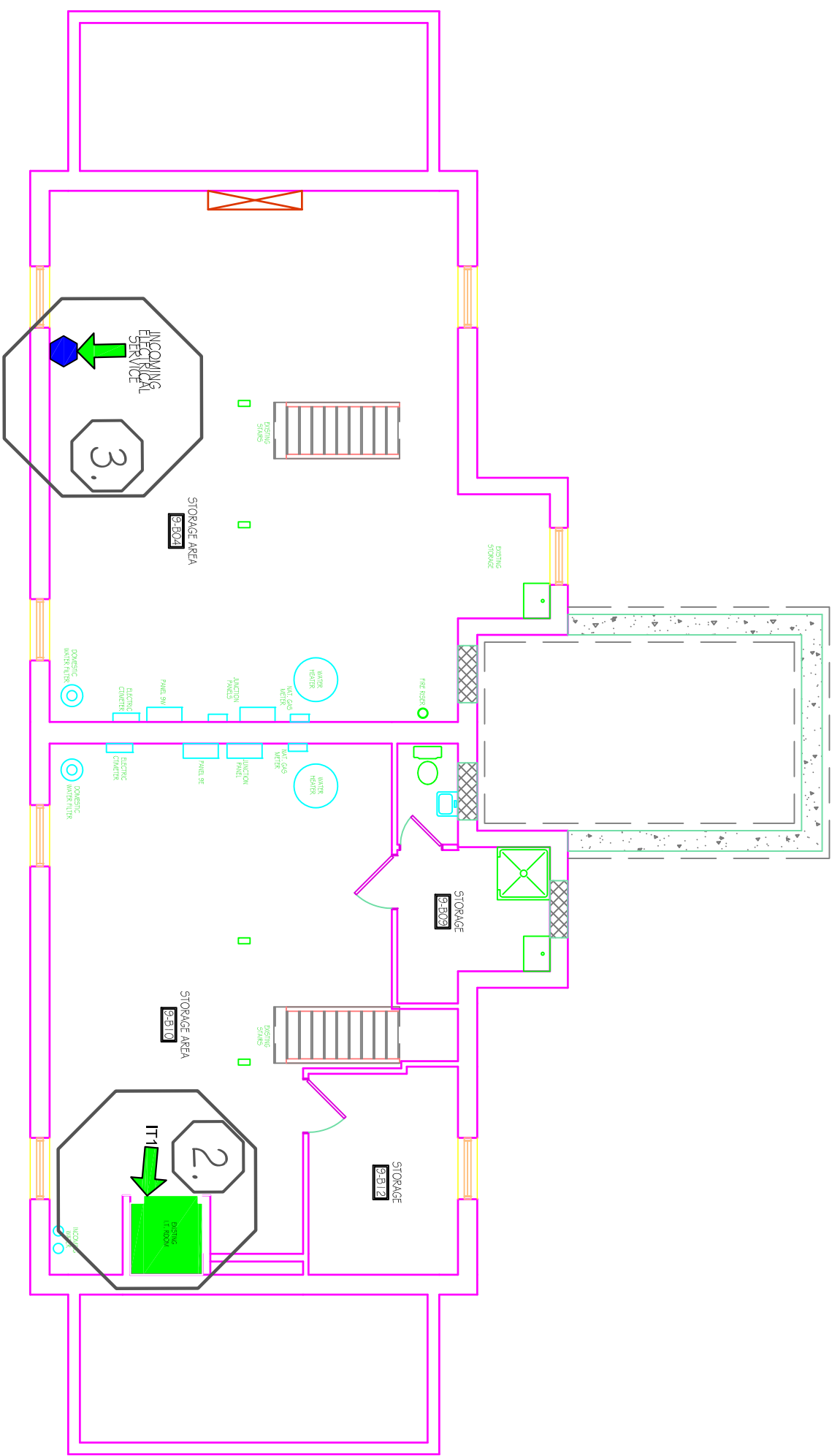


PROGRAMMER LOCATIONS

LEGEND	
PROGRAMMER	Build 9-P1
IT ROOM	Build 9-IT
ELEC. PANEL	Build 9-ELEC.



FIRST FLOOR PLAN-BUILDING 9 (COLD SPRINGS ROAD)



BASEMENT LEVEL-BUILDING 9 (COLD SPRINGS ROAD)

GENERAL NOTES AND COMMENTS

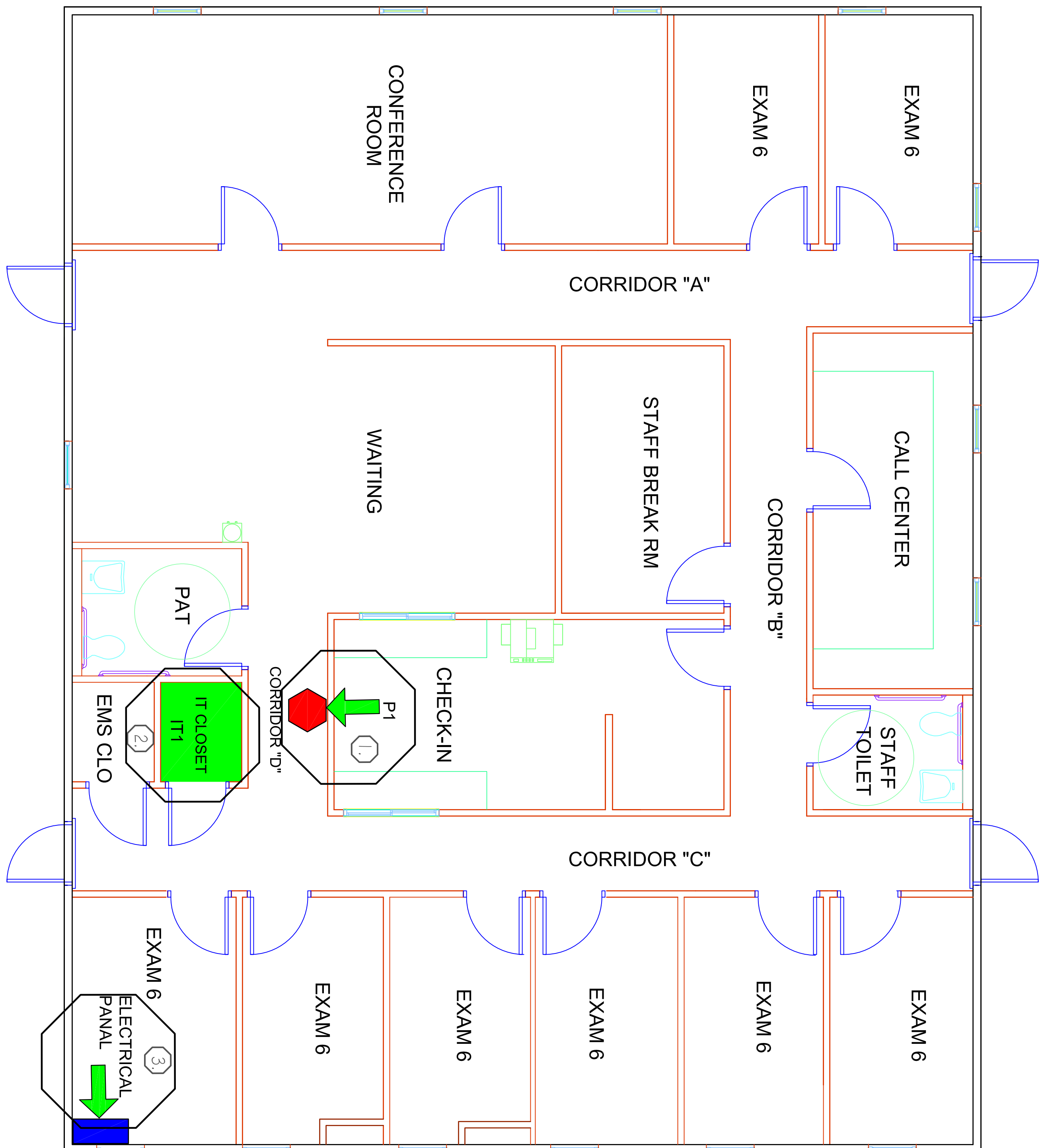
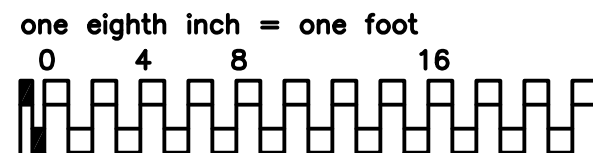
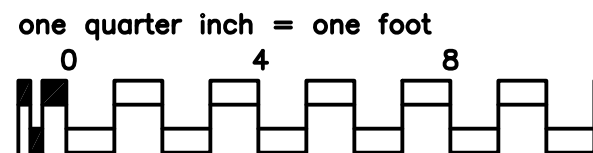
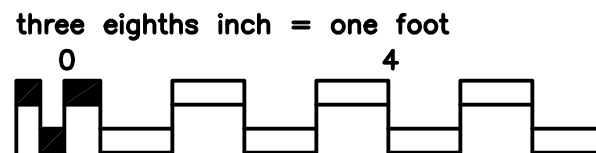
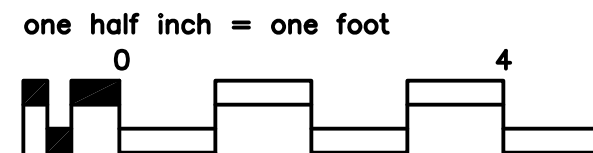
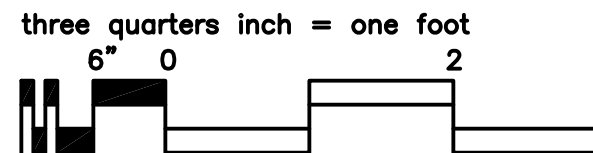
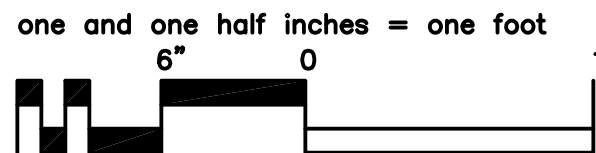
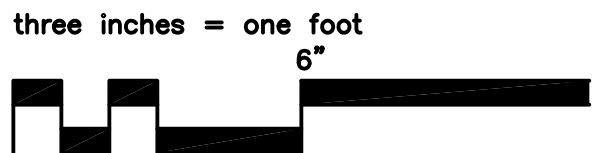
- Equipment location shall be as close as practical to locations shown on the drawings.
- Conductors and cables shall be in accordance with ASTM, NEMA, NFPA and UL.
- All conductors shall be solid copper core.
- Installation shall be in accordance with the NEC.
- No more than three branch circuits shall be installed in any one conduit.
- Install receptacles 450 mm (18 inches) above floor.
- Receptacles shall be duplex, hospital grade.
- Wall plates for switches and receptacles shall be type 302 stainless steel. Oversize plates are not acceptable.
- All receptacles shall comply with NEMA, NFPA, UL, and as shown on the drawings.
- Receptacles shall not be grounded through their mounting screws. Ground receptacles with a jumper from the receptacle green ground terminal to the device box ground screw and a jumper to the branch circuit equipment grounding conductor.
- Contractor may tie into nearby circuits for power if approved by COR.
- If a emergency power circuit is available in the building install duplex receptacles on Emergency Circuit: Wall plates shall be red, type 302 stainless steel, with the word "EMERGENCY" engraved in 6 mm (1/4 inch) white letters.

PLAN NOTES

- Install Programmer P1 in this location.
- Install a network connection from P1 to IT1.
- Breaker box location reference.
- Contractor may use power from a nearby circuit. This must be approved by the COR prior to installation.
- One programmer shall be installed in this building by the contractor.

Revisions		Date
PLOT DATE:		ADDRESS:
PLOT DATE		Richard L. Roudebush VA Medical Center
CAD DRAWING FILE LOCATION:		1481 W. 10th St.
		Indianapolis, Indiana 46202
NORTH REFERENCE		PROJECT ENGINEERS:
		CHIEF OF ENGINEERING: SCOTT L. MORTIZ
		ASSISTANT CHIEF OF ENG: ANDREW J. HAWK
		ENGINEER: NATE BOYD
DRAWN BY:		A. FERNANDEZ
Drawing Title		COLD SPRINGS RD 9_1_PROGRAMMER LOCATION
Approved Project Director		
Project Title		Upgrade Building Security
Location		COLD SPRINGS ROAD
Date	Checked	Drawn
19 APRIL 2018	NB	AF
Project Number		583-19-104
Campus		CSR-9
Drawing Number		FV018
Dwg. 1 of 1		

SCALE 1/8" = 1'



PROGRAMMER LOCATIONS

LEGEND	
PROGRAMMER	4I-PI
IT ROOM	4I-TI
ELEC. PANEL	4I-ELEC.

GENERAL NOTES AND COMMENTS

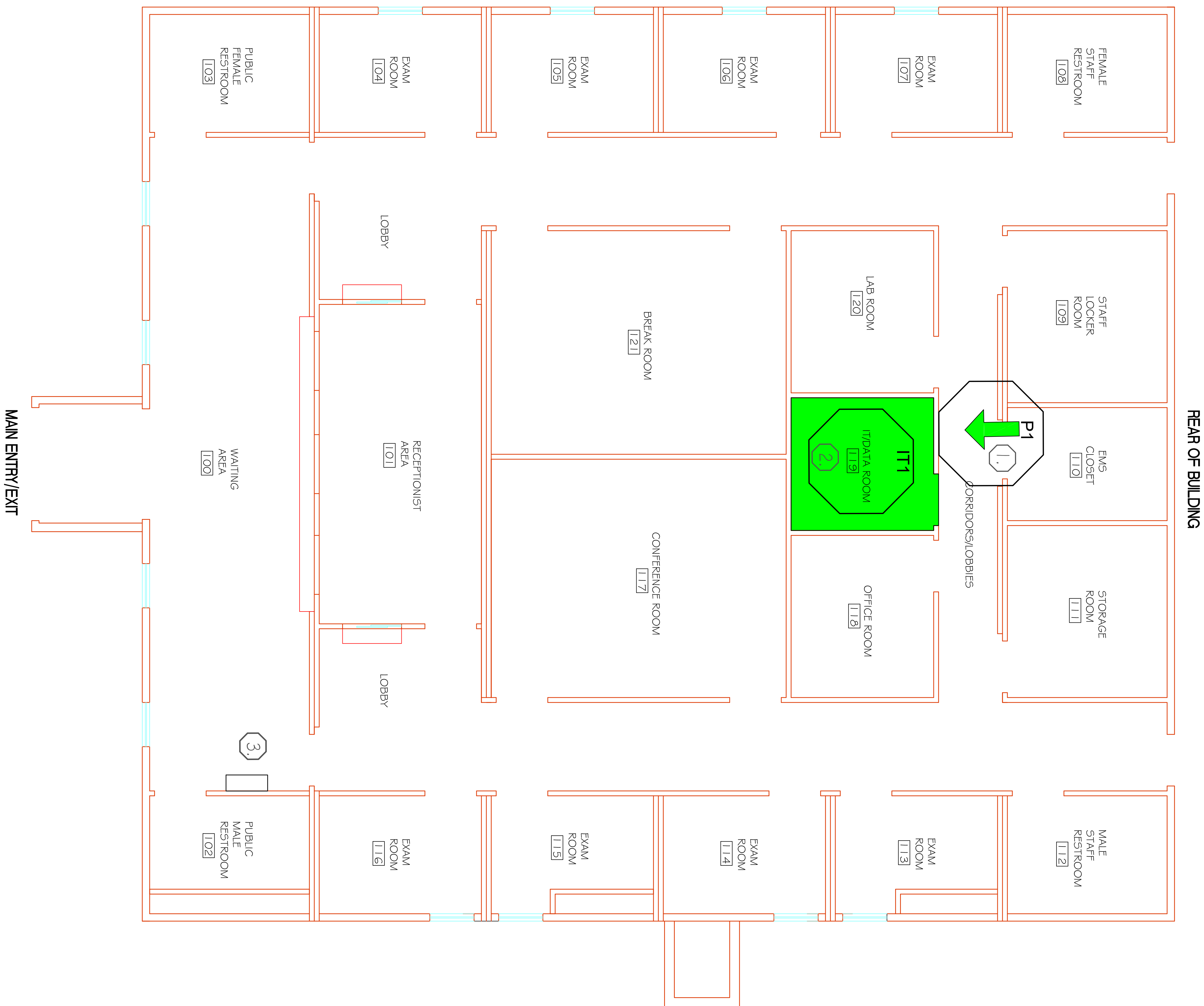
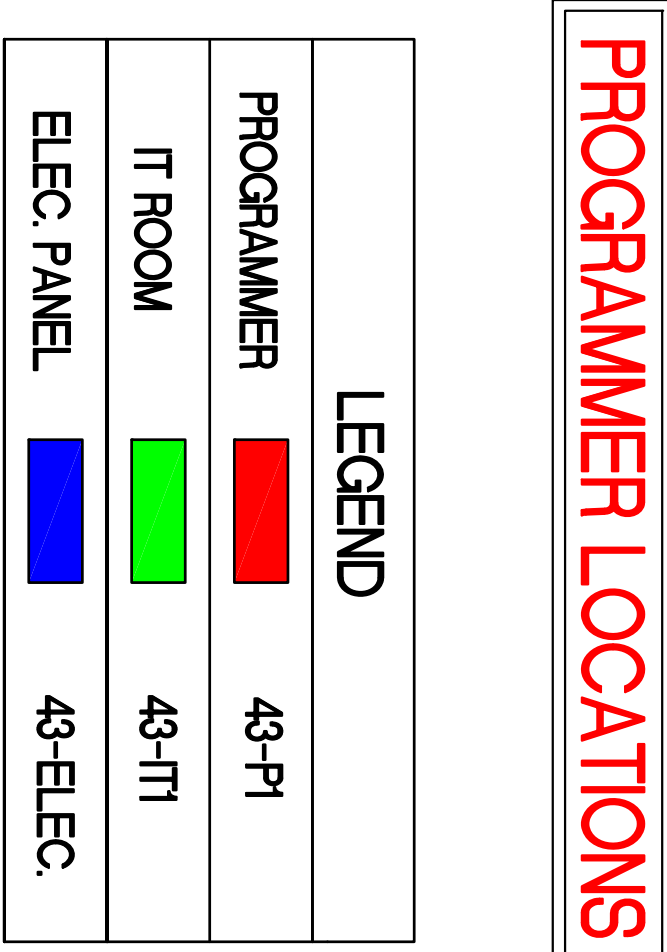
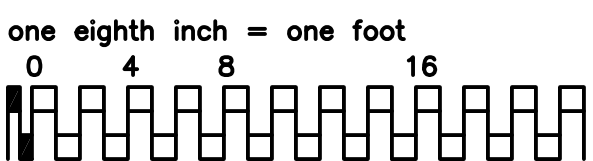
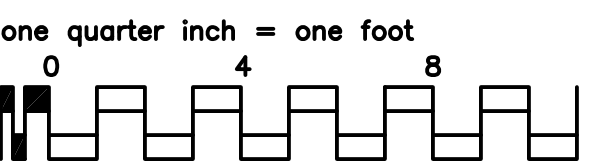
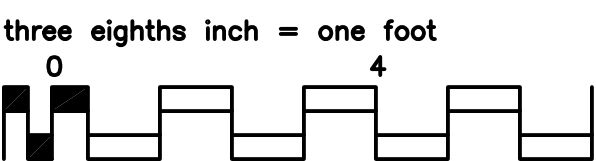
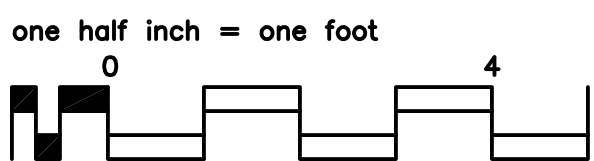
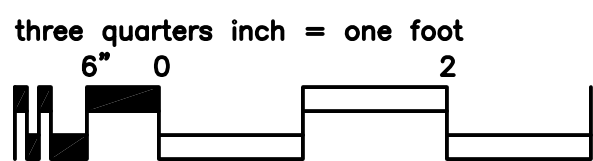
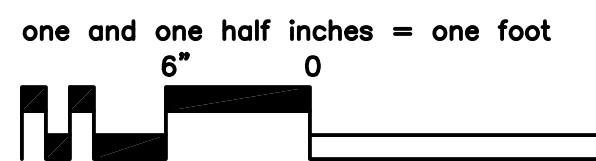
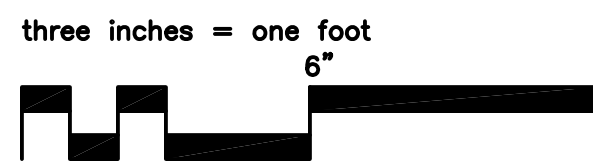
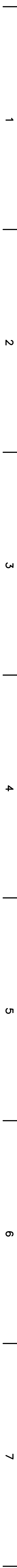
1. Equipment location shall be as close as practical to locations shown on the drawings.
2. Conductors and cables shall be in accordance with ASTM, NEMA, NFPA and UL.
3. All conductors shall be solid copper core.
4. Installation shall be in accordance with the NEC.
5. No more than three branch circuits shall be installed in any one conduit.
6. Install receptacles 450 mm (18 inches) above floor.
7. Receptacles shall be duplex, hospital grade.
8. Wall plates for switches and receptacles shall be type 302 stainless steel. Oversize plates are not acceptable.
9. All receptacles shall comply with NEMA, NFPA, UL, and as shown on the drawings.
10. Receptacles shall not be grounded through their mounting screws. Ground receptacles with a jumper from the receptacle green ground terminal to the device box ground screw and a jumper to the branch circuit equipment grounding conductor.
11. Contractor may tie into nearby circuits for power if approved by COR.
12. If a emergency power circuit is available in the building install duplex receptacles on Emergency Circuit. Wall Plates shall be red, type 302 stainless steel, with the word "EMERGENCY" engraved in 6 mm (1/4 inch) white letters.

PLAN NOTES

1. Install Programmer P1 in this location.
2. Install a network connection from P1 to IT1.
3. Breaker box location reference.

- Contractor may use power from a nearby circuit. This must be approved by the COR prior to installation.
- One programmer shall be installed in this building by the contractor.

[illegible]

[illegible]

GENERAL NOTES AND COMMENTS

1. Equipment location shall be as close as practical to locations shown on the drawings.
2. Conductors and cables shall be in accordance with ASTM, NEMA, NFPA and UL.
3. All conductors shall be solid copper core.
4. Installation shall be in accordance with the NEC.
5. No more than three branch circuits shall be installed in any one conduit.
6. Install receptacles 450 mm (18 inches) above floor.
7. Receptacles shall be duplex, hospital grade.
8. Wall plates for switches and receptacles shall be type 302 stainless steel. Oversize plates are not acceptable.
9. All receptacles shall comply with NEMA, NFPA, UL, and as shown on the drawings.
10. Receptacles shall not be grounded through their mounting screws. Ground receptacles with a jumper from the receptacle green ground terminal to the device box ground screw and a jumper to the branch circuit equipment grounding conductor.
11. Contractor may be into nearby circuits for power if approved by COR.
12. If a emergency power circuit is available in the building install duplex receptacles on Emergency Circuit: Wall plates shall be red, type 302 stainless steel, with the word "EMERGENCY" engraved in 6 mm (1/4 inch) white letters.

PLAN NOTES

1. Install Programmer P1 in this location.
 2. Install a network connection from P1 to IT1.
 3. Breaker box location reference.
1. Contractor may use power from a nearby circuit. This must be approved by the COR prior to installation.
1. One programmer shall be installed in this building by the contractor.

SCALE 3/8"=1'

