

PROJECT GENERAL NOTES

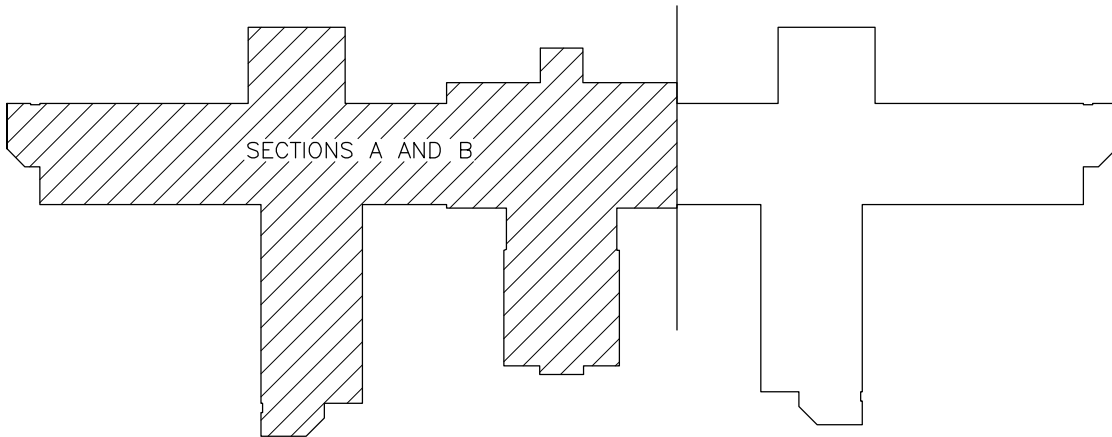
THE INTENT OF THIS PROJECT IS TO PROVIDE A COMPLETE ROOFING SYSTEM ON BUILDING 21 AND 31. ANY ITEM NOT DETAILED SHALL BE CONSTRUCTED IN METHOD APPROVED BY THE NRCA AND ROOFING SYSTEM MANUFACTURER. THE WORK SHALL CONSIST OF REMOVING THE EXISTING ROOFING SYSTEMS AND INSULATION TO THE DECK. REMOVE EXISTING FLASHING ON CANT STRIP ALONG PARAPET WALL AND EQUIPMENT CURBS. PRIOR TO INSTALLING NEW ROOFING SYSTEM AND AFTER DEMOLITION OF EXISTING, FILL ALL HOLES, CRACKS AND VOIDS WITH A QUICK DRYING CONCRETE OR AS REQUIRED TO PROVIDE AN ACCEPTABLE ROOF DECK.

INSTALL NEW 2 PLY VAPOR BARRIER, HOT MOP VAPOR BARRIER AND INSULATION TO DECK.
INSTALL NEW 4 PLY BUR ROOFING SYSTEM. INSTALL A WHITE REFLECTIVE SURFACE WITH A 3/8" DIAMETER AGGREGATE. ALL INSTALLATION PROCEDURES FOR MATERIALS SHALL COMPLY WITH THE MANUFACTURER'S RECOMMENDATIONS. PLANS AND DETAILS ARE DIAGRAMATIC.

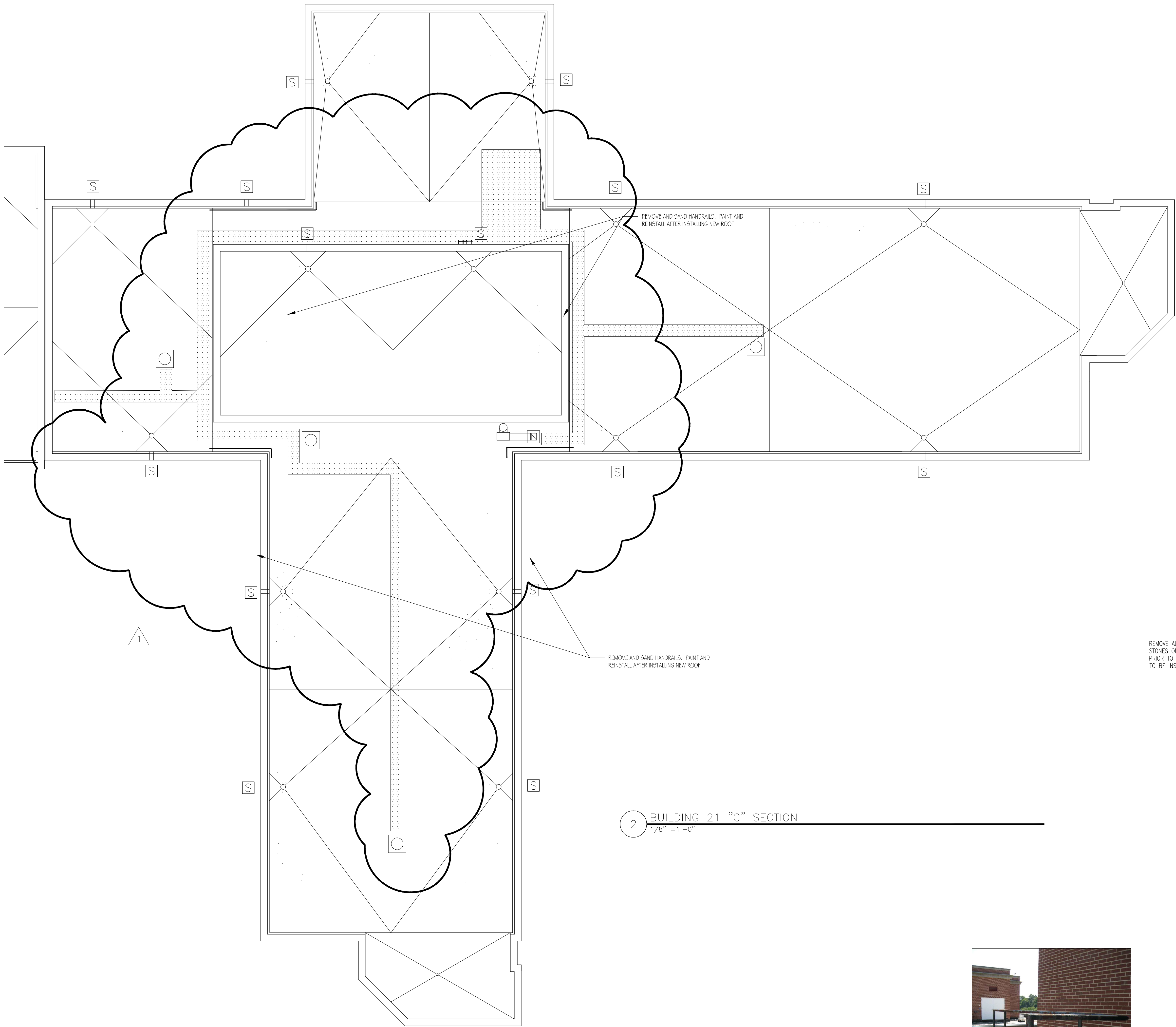
CONTRACTOR SHALL VERIFY ALL EXISTING CONDITIONS PRIOR TO BID. CONTRACTOR SHALL TAKE CARE OF THE EXISTING LIGHTNING PROTECTION SYSTEM. EXISTING SYSTEM IS U.L. APPROVED AND ANY MODIFICATIONS MADE TO LIGHTNING PROTECTION SYSTEM, WILL HAVE TO BE U.L. CERTIFIED.

SPECIAL NOTE: THERE IS WORKING MECHANICAL EQUIPMENT ON ROOF. AREAS OF WORK AT MECHANICAL EQUIPMENT MUST BE SCHEDULED 2 WEEKS IN ADVANCE IN ORDER TO COORDINATE WITH SERVICES OF AFFECTED AREAS FOR TEMPORARY SHUT DOWN IN ORDER FOR ANY EQUIPMENT CHANGES FOR ROOFING WORK. CONTRACTOR TO PROVIDE AND INSTALL NEW ELECTRICAL AND MECHANICAL PARTS AND EQUIPMENT IN ORDER TO MODIFY ANY MECHANICAL EQUIPMENT TO FIT THE NEW ROOF SYSTEM. ALL EQUIPMENT CURBS SHALL BE PER MANUFACTURES RECOMMENDATIONS FOR CANTS AND FLASHING. CONTRACTOR TO VERIFY ALL EQUIPMENT, VENTS, ROOF CURBS LOCATION ON ROOF. PROVIDE ENCLOSED DUST CHUTES WITH CONTROL GATES FROM ROOF TO CARRY DEBRIS TO DUMPSTER AND TO GOVERN FLOW OF MATERIAL. REPAIR LAWN AREAS OR ANY BUILDING DAMAGES BACK TO ORIGINAL CONDITION AS PER SPECIFICATIONS.

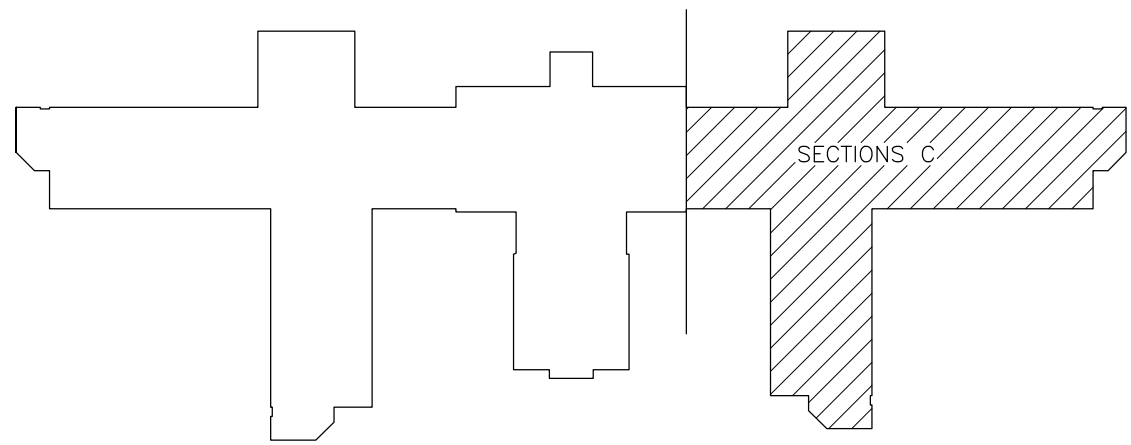
1 BUILDING 21 "A & B" SECTIONS
1/8" = 1'-0"



| | | | | | | | | | | | | | | | | |
|------------------------------------|--|--------------------|---------------------|-----------------|--|-------------------------------|--|-----------------------------|---------------------------------------|---------------------------|---|------------------------------------|---|-----------------------------|------------------------|---|
| | | <div>8-23-12</div> | <div>Revision</div> | <div>Date</div> | <div><div><div><div><div><div></div></div></div><div><div><div></div></div></div></div><div>SCUPPER LOCATION SYMBOL. SOME OF THE EXISTING SCUPPERS ARE CONCEALED BY EXISTING ROOFING. SCUPPER NOT TO BE COVERED UP BY NEW ROOFING.</div></div></div> | <div>RECOMMEND APPROVAL</div> | | | | <div>Drawing Title</div> | | <div>Project Title</div> | | <div>Date</div> | | <div><div><div><div><div></div></div></div><div><div><div></div></div></div></div><div>Department of Veterans Affairs</div></div> |
| | | | | | | <div>REQUESTER</div> | <div>Date</div> | <div>CHIEF OF SERVICE</div> | <div>Date</div> | <div>CHIEF OF STAFF</div> | <div>Date</div> | <div>PLANS AND GENERAL NOTES</div> | | <div>REPLACE ROOFS ON</div> | | |
| <div>REVISED TO ADD WALKWAYS</div> | | | | | | | <div>ASSOC. DIR. PATIENT CARE SVC.</div> | <div>Date</div> | <div>ASSOC. DIR. for OPERATIONS</div> | <div>Date</div> | <div>Approved: Safety Manager/M&O Supervisor</div> | <div>Building Number</div> | <div>Checked</div> | <div>Drawn</div> | <div>DRAWING NO.</div> | |
| <div>Revision</div> | | <div>Date</div> | | | | | | | | | <div>Approved:Chief of Facilities Management Svr.</div> | <div>Bldgs 21 & 31</div> | <div>GLM</div> | <div>I</div> | <div>DWG. I OF 4</div> | |
| | | | | | | | <div>APPROVAL BY:</div> | | <div>Date</div> | | <div>Approved:Chief of Facilities Management Svr.</div> | <div>Location</div> | <div>W.G.(Bill) Hefner Medical Center</div> | | | |
| | | | | | | | <div>MEDICAL CENTER DIRECTOR</div> | | | | | <div>1601 Brenner Ave.</div> | | | | |
| | | | | | | | | | | | | <div>Salisbury NC 28144</div> | | | | |
| | | | | | | | | | | | | | | | | |
| | | | | | | | | | | | | | | | | |
| | | | | | | | | | | | | | | | | |
| | | | | | | | | | | | | | | | | |
| | | | | | | | | | | | | | | | | |
| | | | | | | | | | | | | | | | | |
| | | | | | | | | | | | | | | | | |
| | | | | | | | | | | | | | | | | |
| | | | | | | | | | | | | | | | | |
| | | | | | | | | | | | | | | | | |
| | | | | | | | | | | | | | | | | |
| | | | | | | | | | | | | | | | | |
| | | | | | | | | | | | | | | | | |
| | | | | | | | | | | | | | | | | |
| | | | | | | | | | | | | | | | | |
| | | | | | | | | | | | | | | | | |
| | | | | | | | | | | | | | | | | |
| | | | | | | | | | | | | | | | | |
| | | | | | | | | | | | | | | | | |
| | | | | | | | | | | | | | | | | |
| | | | | | | | | | | | | | | | | |
| | | | | | | | | | | | | | | | | |
| | | | | | | | | | | | | | | | | |
| | | | | | | | | | | | | | | | | |
| | | | | | | | | | | | | | | | | |
| | | | | | | | | | | | | | | | | |
| | | | | | | | | | | | | | | | | |
| | | | | | | | | | | | | | | | | |
| | | | | | | | | | | | | | | | | |
| | | | | | | | | | | | | | | | | |
| | | | | | | | | | | | | | | | | |
| | | | | | | | | | | | | | | | | |
| | | | | | | | | | | | | | | | | |
| | | | | | | | | | | | | | | | | |
| | | | | | | | | | | | | | | | | |
| | | | | | | | | | | | | | | | | |
| | | | | | | | | | | | | | | | | |
| | | | | | | | | | | | | | | | | |
| | | | | | | | | | | | | | | | | |
| | | | | | | | | | | | | | | | | |
| | | | | | | | | | | | | | | | | |
| | | | | | | | | | | | | | | | | |
| | | | | | | | | | | | | | | | | |
| | | | | | | | | | | | | | | | | |
| | | | | | | | | | | | | | | | | |
| | | | | | | | | | | | | | | | | |
| | | | | | | | | | | | | | | | | |
| | | | | | | | | | | | | | | | | |
| | | | | | | | | | | | | | | | | |
| | | | | | | | | | | | | | | | | |
| | | | | | | | | | | | | | | | | |
| | | | | | | | | | | | | | | | | |
| | | | | | | | | | | | | | | | | |
| | | | | | | | | | | | | | | | | |
| | | | | | | | | | | | | | | | | |
| | | | | | | | | | | | | | | | | |
| | | | | | | | | | | | | | | | | |
| | | | | | | | | | | | | | | | | |
| | | | | | | | | | | | | | | | | |
| | | | | | | | | | | | | | | | | |
| | | | | | | | | | | | | | | | | |
| | | | | | | | | | | | | | | | | |
| | | | | | | | | | | | | | | | | |
| | | | | | | | | | | | | | | | | |
| | | | | | | | | | | | | | | | | |
| | | | | | | | | | | | | | | | | |
| | | | | | | | | | | | | | | | | |
| | | | | | | | | | | | | | | | | |
| | | | | | | | | | | | | | | | | |
| | | | | | | | | | | | | | | | | |
| | | | | | | | | | | | | | | | | |
| | | | | | | | | | | | | | | | | |
| | | | | | | | | | | | | | | | | |
| | | | | | | | | | | | | | | | | |
| | | | | | | | | | | | | | | | | |



2 BUILDING 21 "C" SECTION
1/8" = 1'-0"



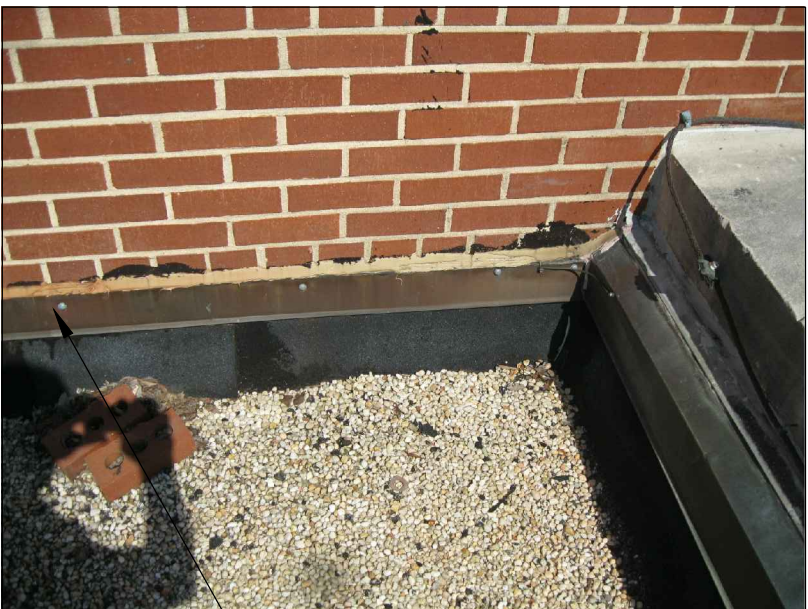
PROJECT GENERAL NOTES

THE INTENT OF THIS PROJECT IS TO PROVIDE A COMPLETE ROOFING SYSTEM ON BUILDING 21 AND 31. ANY ITEM NOT DETAILED SHALL BE CONSTRUCTED IN METHOD APPROVED BY THE NRCA AND ROOFING SYSTEM MANUFACTURER. THE WORK SHALL CONSIST OF REMOVING THE EXISTING ROOFING SYSTEMS AND INSULATION TO THE DECK. REMOVE EXISTING FLASHING ON CANT STRIP ALONG PARAPET WALL AND EQUIPMENT CURBS. PRIOR TO INSTALLING NEW ROOFING SYSTEM AND AFTER DEMOLITION OF EXISTING, FILL ALL HOLES, CRACKS AND VOIDS WITH A QUICK DRYING CONCRETE OR AS REQUIRED TO PROVIDE AN ACCEPTABLE ROOF DECK.

INSTALL NEW 2 PLY VAPOR BARRIER, HOT MOP VAPOR BARRIER AND INSULATION TO DECK. INSTALL NEW 4 PLY BUR ROOFING SYSTEM. INSTALL A WHITE REFLECTIVE SURFACE WITH A 3/8" DIAMETER AGGREGATE. ALL INSTALLATION PROCEDURES FOR MATERIALS SHALL COMPLY WITH THE MANUFACTURER'S RECOMMENDATIONS. PLANS AND DETAILS ARE DIAGRAMATIC.

CONTRACTOR SHALL VERIFY ALL EXISTING CONDITIONS PRIOR TO BID. CONTRACTOR SHALL TAKE CARE OF THE EXISTING LIGHTNING PROTECTION SYSTEM. EXISTING SYSTEM IS U.L. APPROVED AND ANY MODIFICATIONS MADE TO LIGHTNING PROTECTION SYSTEM, WILL HAVE TO BE U.L. CERTIFIED.

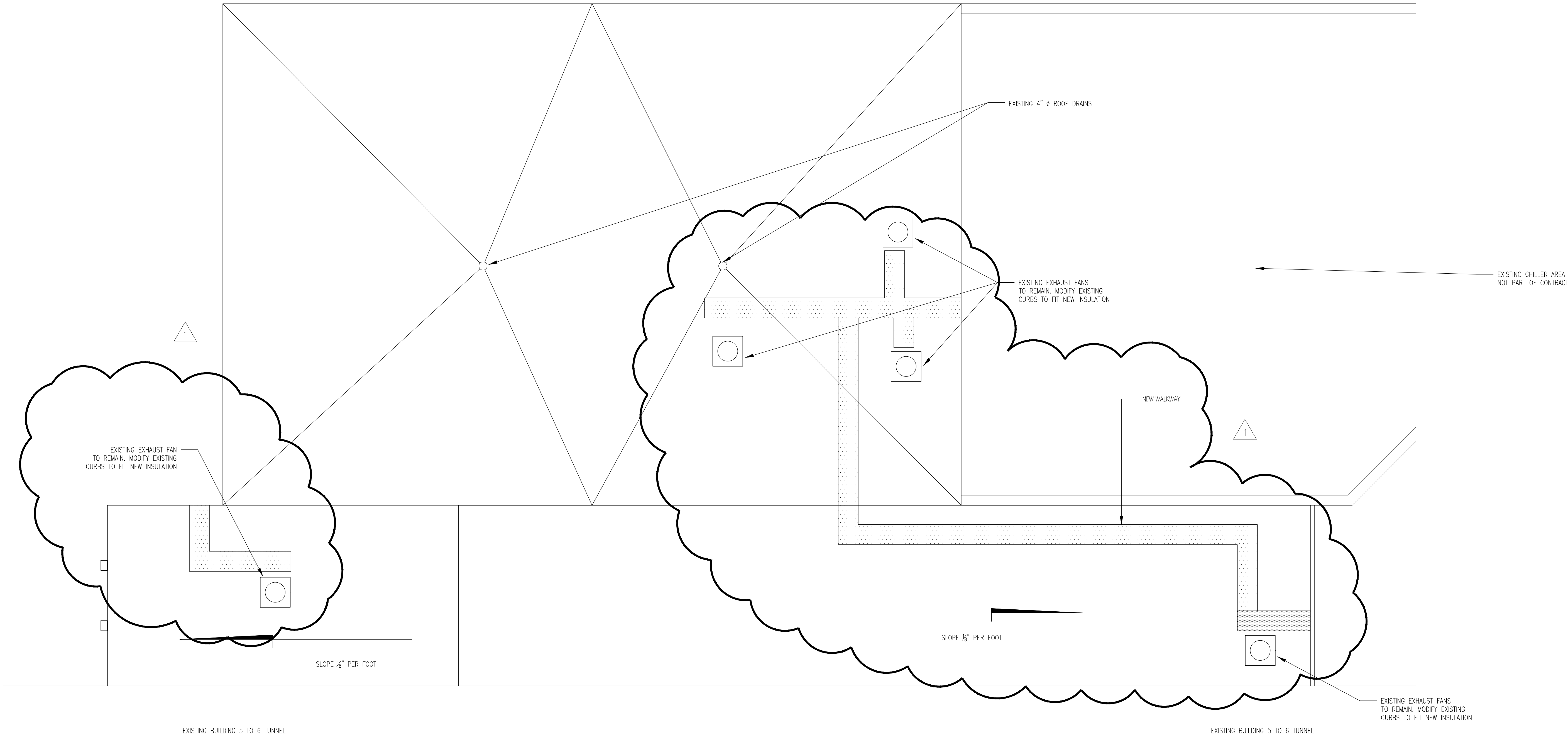
SPECIAL NOTE: THERE IS WORKING MECHANICAL EQUIPMENT ON ROOF. AREAS OF WORK AT MECHANICAL EQUIPMENT MUST BE SCHEDULED 2 WEEKS IN ADVANCE IN ORDER TO COORDINATE WITH SERVICES OF AFFECTED AREAS FOR TEMPORARY SHUT DOWN IN ORDER FOR ANY EQUIPMENT CHANGES FOR ROOFING WORK. CONTRACTOR TO PROVIDE AND INSTALL NEW ELECTRICAL AND MECHANICAL PARTS AND EQUIPMENT IN ORDER TO MODIFY ANY MECHANICAL EQUIPMENT TO FIT THE NEW ROOF SYSTEM. ALL EQUIPMENT CURBS SHALL BE PER MANUFACTURES RECOMMENDATIONS FOR CANTS AND FLASHING. CONTRACTOR TO VERIFY ALL EQUIPMENT, VENTS, ROOF CURBS LOCATION ON ROOF. PROVIDE ENCLOSED DUST CHUTES WITH CONTROL GATES FROM ROOF TO CARRY DEBRIS TO DUMPSTER AND TO COVERN FLOW OF MATERIAL. REPAIR LAWN AREAS OR ANY BUILDING DAMAGES BACK TO ORIGINAL CONDITION AS PER SPECIFICATIONS.



REMOVE ALL EXISTING MATERIAL BETWEEN ALL COPING STONES ON BUILDING 21 AND INSTALL NEW BACKER ROD PRIOR TO INSTALL NEW FLEXIBLE SEALANT. TOP OF BACKER ROD TO BE INSTALLED AT A DEPTH OF WIDTH OF JOINT.



| | | | | | | | | | | | | | | | |
|--------------------------|--|---------|--|-------------------------------|--|------|--|--|--|------------------|--|--|--|--------------------|--|
| REVISION | | 8-23-12 | | RECOMMEND APPROVAL | | | | Drawing Title | | Project Title | | Date | | | |
| REVISED TO ADD WALK WAYS | | | | REQUESTER | | Date | | PLANS AND GENERAL NOTES | | REPLACE ROOFS ON | | 7-25-2012 | | | |
| Revision | | Date | | CHIEF OF SERVICE | | Date | | B21 "C" SECTION | | Bldgs 21 & 31 | | Project No. 659-12-256 | | | |
| | | | | ASSOC. DIR. PATIENT CARE SVC. | | Date | | Approved: Safety Manager/M&O Supervisor | | Building Number | | Checked | | | |
| | | | | ASSOC. DIR. for OPERATIONS | | Date | | Approved:Chief of Facilities Management Svr. | | Bldgs 21 & 31 | | GLM | | | |
| | | | | APPROVAL BY: | | | | Date | | Location | | W.G.(Bill) Hefner Medical Center 1601 Brenner Ave. Salsbury NC 28144 | | DRAWING NO. 2 OF 4 | |
| | | | | MEDICAL CENTER DIRECTOR | | | | | | | | | | | |



3 BUILDING 31 CHILLER PLANT
3/16" = 1'-0"

PROJECT GENERAL NOTES

THE INTENT OF THIS PROJECT IS TO PROVIDE A COMPLETE ROOFING SYSTEM ON BUILDING 21 AND 31. ANY ITEM NOT DETAILED SHALL BE CONSTRUCTED IN METHOD APPROVED BY THE NRCA AND ROOFING SYSTEM MANUFACTURER. THE WORK SHALL CONSIST OF REMOVING THE EXISTING ROOFING SYSTEMS AND INSULATION TO THE DECK. REMOVE EXISTING FLASHING ON CANT STRIP ALONG PARAPET WALL AND EQUIPMENT CURBS. PRIOR TO INSTALLING NEW ROOFING SYSTEM AND AFTER DEMOLITION OF EXISTING, FILL ALL HOLES, CRACKS AND VOIDS WITH A QUICK DRYING CONCRETE OR AS REQUIRED TO PROVIDE AN ACCEPTABLE ROOF DECK.

INSTALL NEW 2 PLY VAPOR BARRIER, HOT MOP VAPOR BARRIER AND INSULATION TO DECK.
INSTALL NEW 4 PLY BUR ROOFING SYSTEM. INSTALL A WHITE REFLECTIVE SURFACE WITH A 3/8" DIAMETER AGGREGATE. ALL INSTALLATION PROCEDURES FOR MATERIALS SHALL COMPLY WITH THE MANUFACTURER'S RECOMMENDATIONS. PLANS AND DETAILS ARE DIAGRAMATIC.

CONTRACTOR SHALL VERIFY ALL EXISTING CONDITIONS PRIOR TO BID. CONTRACTOR SHALL TAKE CARE OF THE EXISTING LIGHTNING PROTECTION SYSTEM. EXISTING SYSTEM IS U.L. APPROVED AND ANY MODIFICATIONS MADE TO LIGHTNING PROTECTION SYSTEM, WILL HAVE TO BE U.L. CERTIFIED.

SPECIAL NOTE: THERE IS WORKING MECHANICAL EQUIPMENT ON ROOF. AREAS OF WORK AT MECHANICAL EQUIPMENT MUST BE SCHEDULED 2 WEEKS IN ADVANCE IN ORDER TO COORDINATE WITH SERVICES OF AFFECTED AREAS FOR TEMPORARY SHUT DOWN IN ORDER FOR ANY EQUIPMENT CHANGES FOR ROOFING WORK. CONTRACTOR TO PROVIDE AND INSTALL NEW ELECTRICAL AND MECHANICAL PARTS AND EQUIPMENT IN ORDER TO MODIFY ANY MECHANICAL EQUIPMENT TO FIT THE NEW ROOF SYSTEM. ALL EQUIPMENT CURBS SHALL BE PER MANUFACTURES RECOMMENDATIONS FOR CANTS AND FLASHING. CONTRACTOR TO VERIFY ALL EQUIPMENT, VENTS, ROOF CURBS LOCATION ON ROOF. PROVIDE ENCLOSED DUST CHUTES WITH CONTROL GATES FROM ROOF TO CARRY DEBRIS TO DUMPSTER AND TO GOVERN FLOW OF MATERIAL. REPAIR LAWN AREAS OR ANY BUILDING DAMAGES BACK TO ORIGINAL CONDITION AS PER SPECIFICATIONS.

| | | |
|---------------------------|---|---------------|
| REVISION TO ADD WALK WAYS | | 8-23-12 |
| Revision | 9-12-256 - Replace Roof Building 21 & 31\Drawing\SEDP | Date: 8-23-12 |

| | |
|---|--|
| LDR'S 21 AND 31 REV 1.dwg, Replace Roof B21-B31 Sheet 3, 8/24/2012 2:20:18 PM | |
|---|--|

| RECOMMEND APPROVAL | | | |
|-------------------------------|------|----------------------------|------|
| REQUESTER | Date | CHIEF OF STAFF | Date |
| CHIEF OF SERVICE | Date | ASSOC. DIR. for OPERATIONS | Date |
| ASSOC. DIR. PATIENT CARE SVC. | Date | | |
| APPROVAL BY: | | | Date |
| MEDICAL CENTER DIRECTOR | | | |

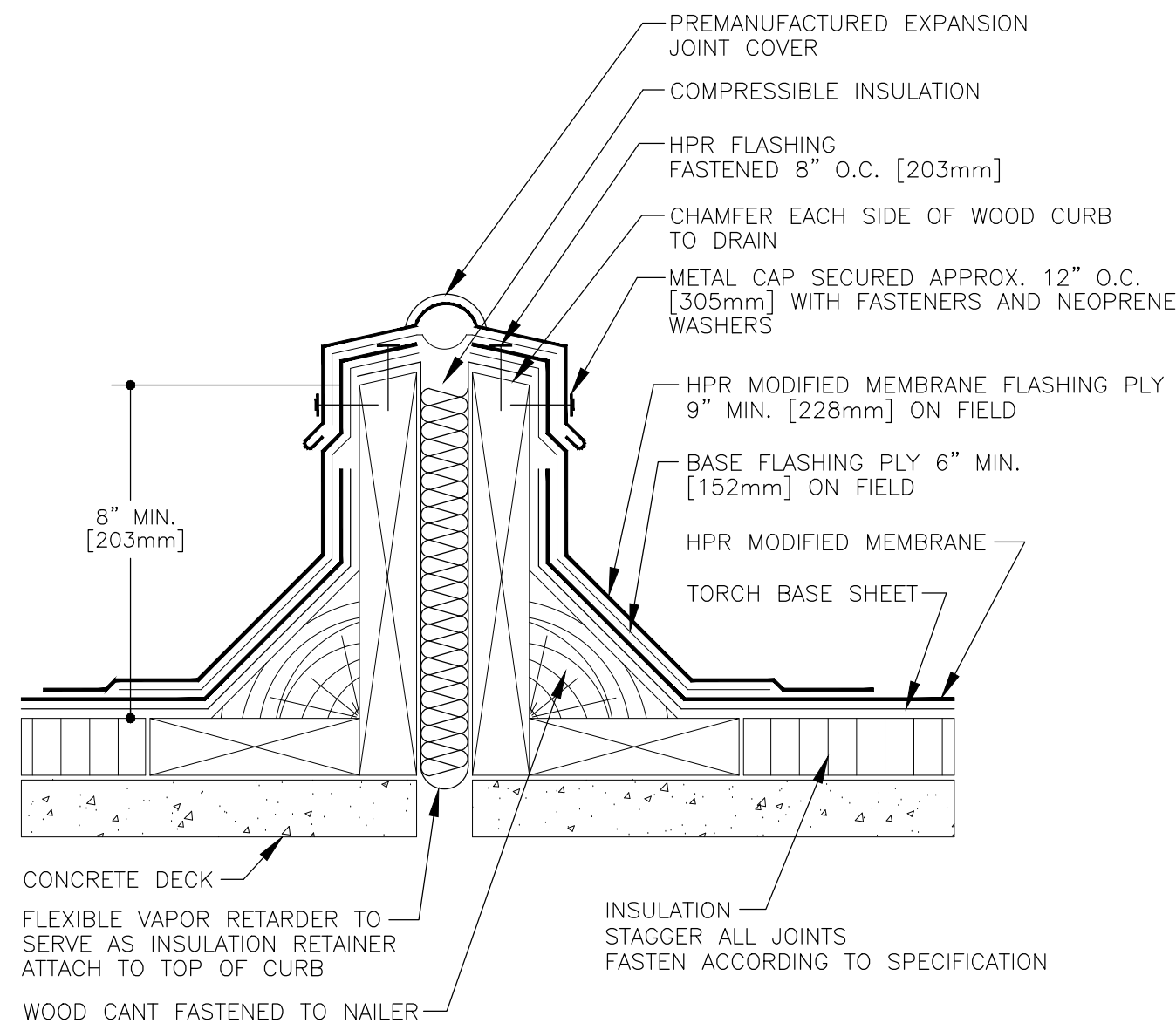
| | |
|--|--|
| Drawing Title | |
| PLANS AND NOTES OF BUILDING 31 | |
| Approved: Safety Manager/M&O Supervisor | |
| Approved:Chief of Facilities Management Srv. | |

| | | |
|---|---------|-------|
| Project Title | | |
| REPLACE ROOFS ON BUILDINGS 21 & 31 | | |
| Building Number | Checked | Drawn |
| Bldgs 21 & 31 | | GLM |
| Location W.G.(BIO) Hefner Medical Center 1601 Brenner Ave. Salisbury NC 28144 | | |

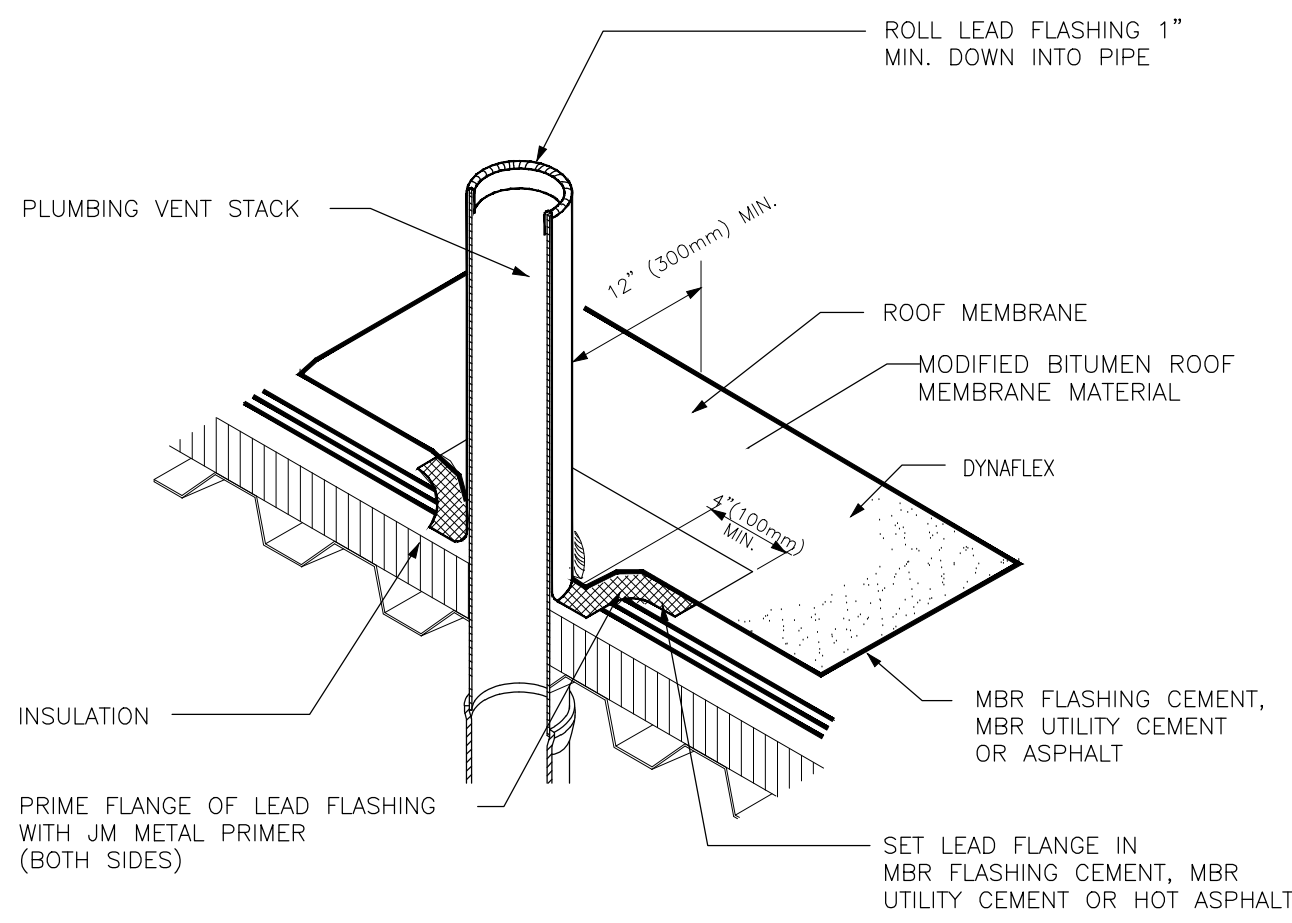
| | |
|-------------|------------|
| Date | 7-25-2012 |
| Project No. | 659-12-256 |
| DRAWING NO. | 3 |
| DWG. | 3 OF 4 |



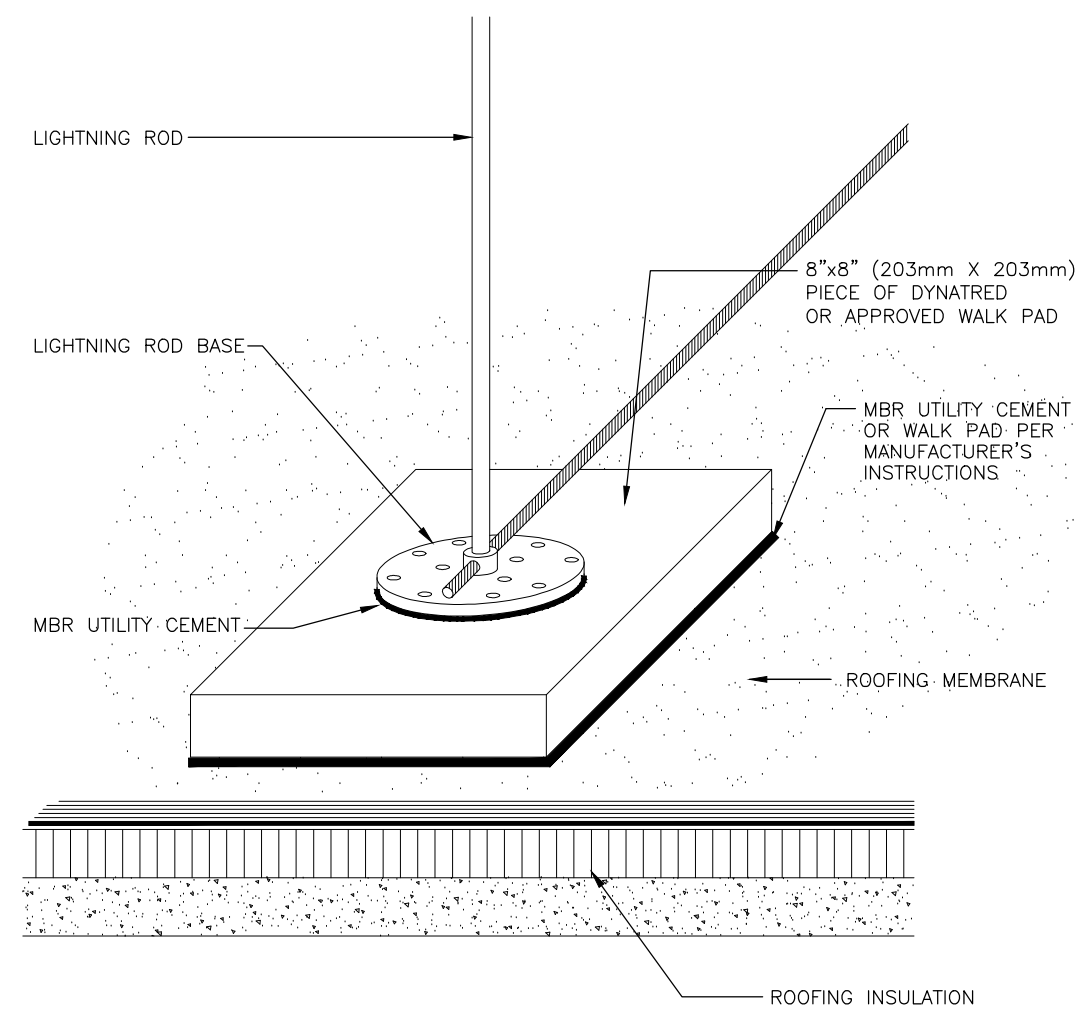
Department of Veterans Affairs



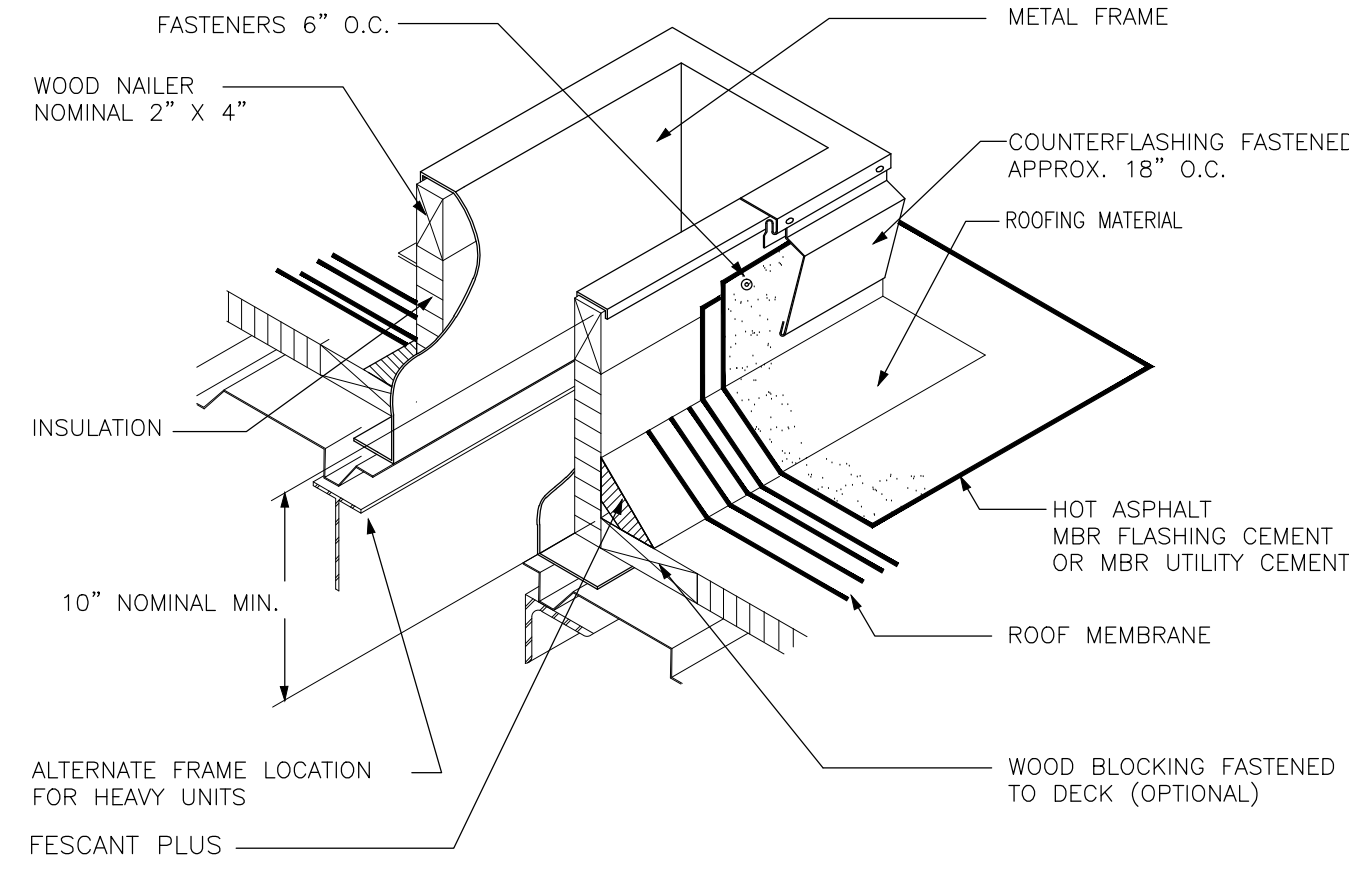
EXPANSION JOINT
N.T.S.



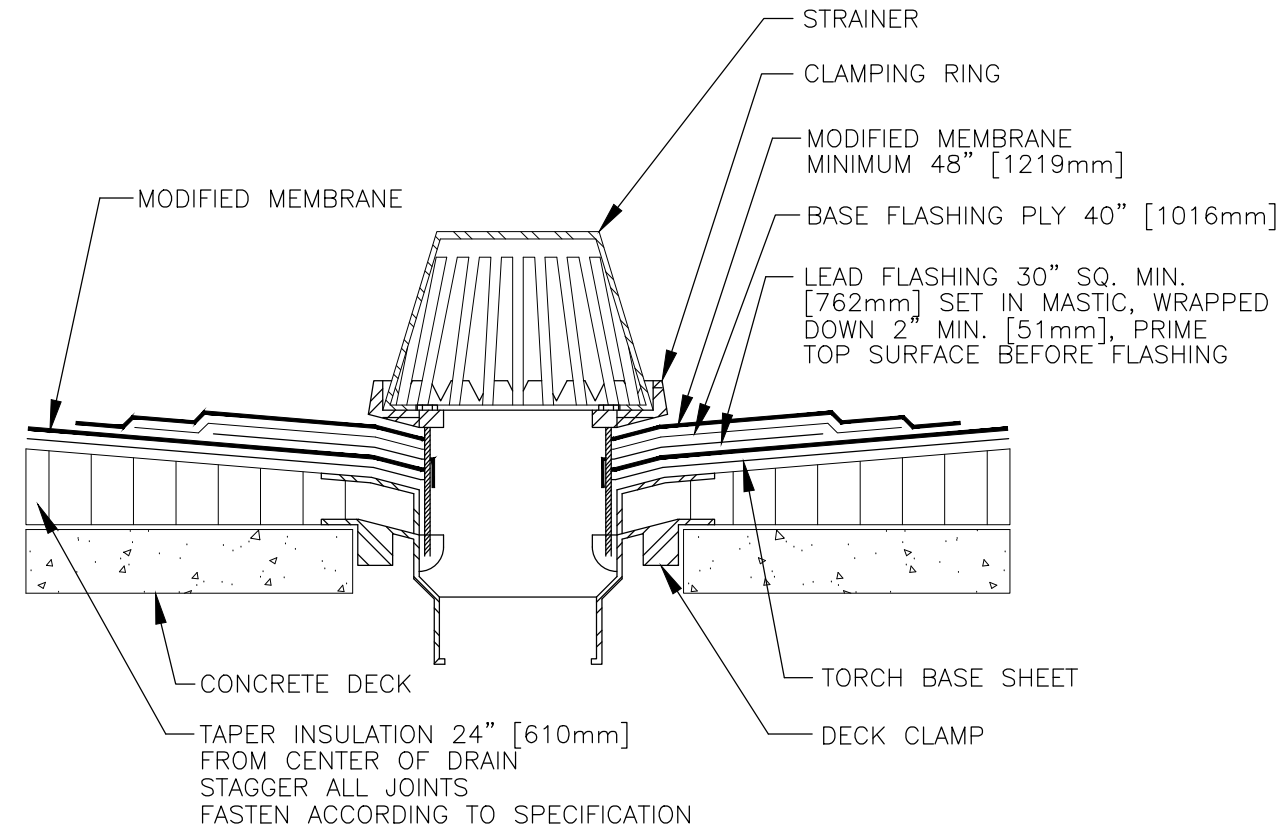
PLUMBING VENT
N.T.S.



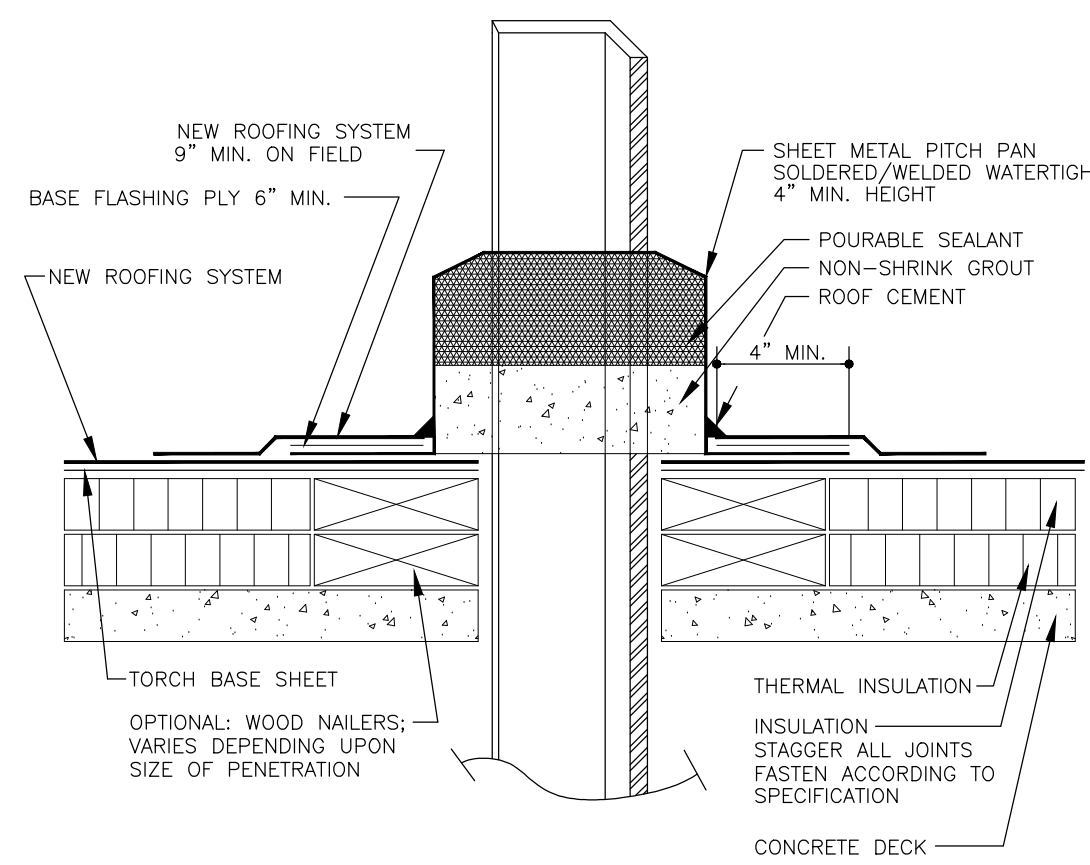
LIGHTNING PROTECTION
N.T.S.



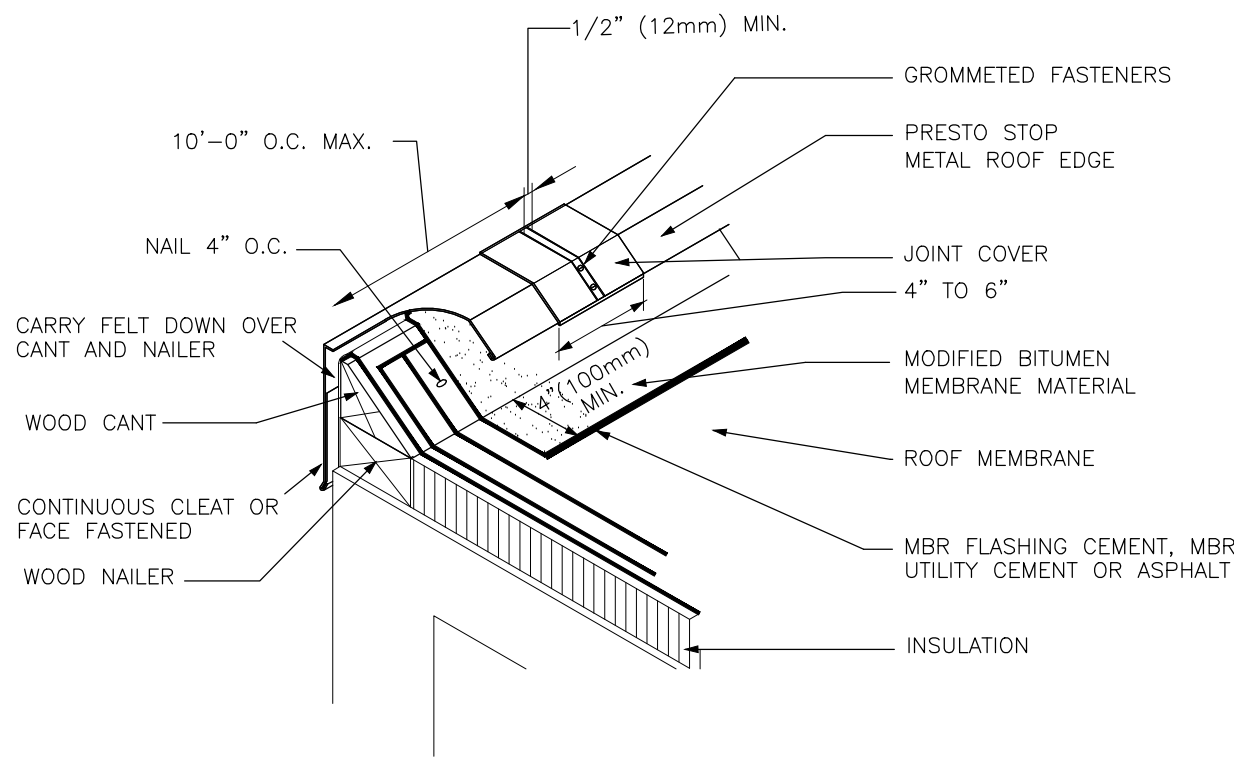
FLASHING AT CURBS
N.T.S.



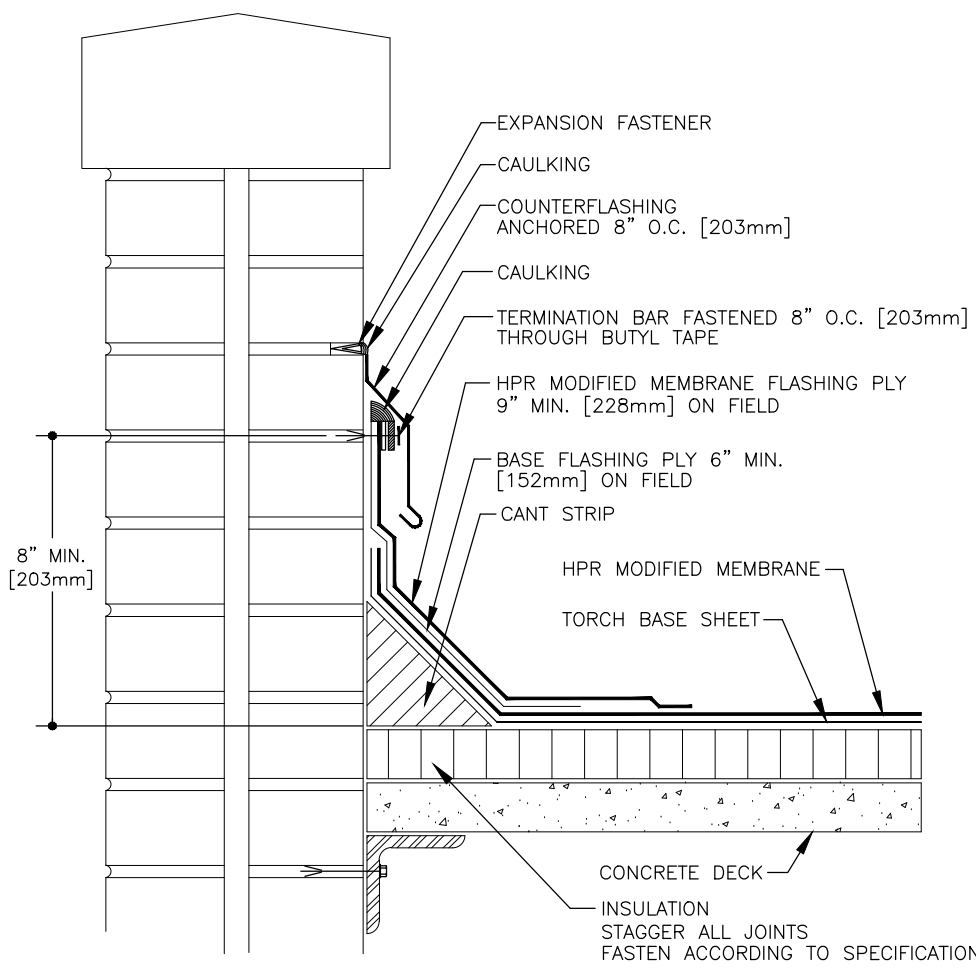
ROOF DRAINS
N.T.S.



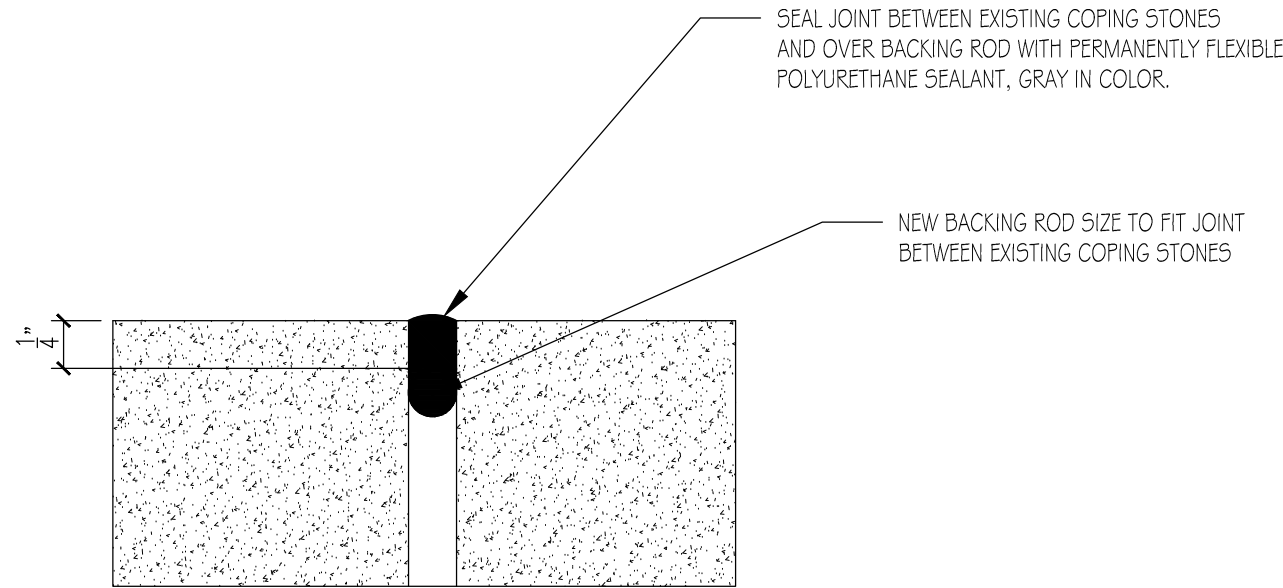
PITCH POCKET
N.T.S.



GRAVEL STOP & ROOF EDGES
N.T.S.



REGLET MOUNTED COUNTER FLASHING
N.T.S.



COPING STONE REPAIR DETAIL
N.T.S.



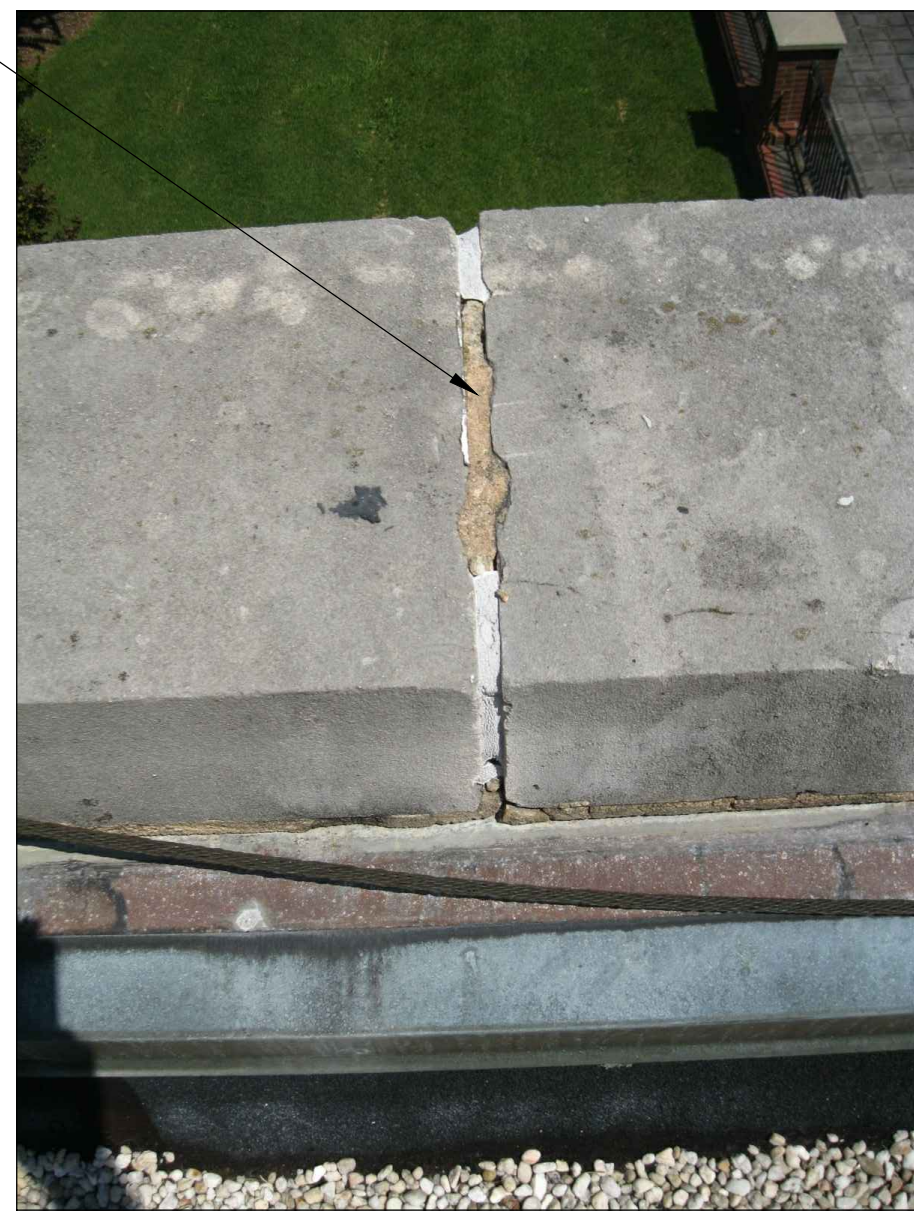
INSTALL NEW GUTTER AND DOWNSPOUTS
TO MATCH EXISTING

NEW ALUMINUM FLASHING MATERIAL
TYPICAL ALL AREAS ON B31



EXISTING BUILDING 31 CHILLER PLANT
REMOVE AND REPLACE CURB OR INSTALL
NEW CURBS FOR EXHAUST FANS. TYPICAL
FOR ALL THREE SECTIONS OF ROOFING
OF THE CHILLER PLANT.

REMOVE AND REPAIR ALL JOINTS
BETWEEN ALL COPING STONES ON
BLDG. 21



COPING STONE JOINT DAMAGE
N.T.S.

| | | | | | |
|----------|--|-------|-----|------|----------------------|
| Revision | 659-12-256 - Replace Roof Building 21 & 31 | Drawn | GLM | Date | 7/24/2012 2:20:19 PM |
|----------|--|-------|-----|------|----------------------|

| RECOMMEND APPROVAL | | | |
|-------------------------------|------|----------------------------|------|
| REQUESTER | Date | CHIEF OF SERVICE | Date |
| CHIEF OF SERVICE | Date | CHIEF OF STAFF | Date |
| ASSOC. DIR. PATIENT CARE SVC. | Date | ASSOC. DIR. for OPERATIONS | Date |
| APPROVAL BY: | Date | | |
| MEDICAL CENTER DIRECTOR | | | |

| | |
|---|---------------------------|
| Drawing Title | DETAILS AND PHOTOS OF B31 |
| Approved: Safety Manager/M&O Supervisor | |
| Approved: Chief of Facilities Management Svr. | |

| | |
|-----------------|--|
| Project Title | REPLACE ROOFS ON BUILDINGS 21 & 31 |
| Building Number | Bldgs 21 & 31 |
| Checked | GLM |
| Drawn | GLM |
| Location | W.G.(Bld) Hefner Medical Center 1601 Brenner Ave. Salisbury NC 28144 |

| | |
|-------------|------------|
| Date | 7-25-2012 |
| Project No. | 659-12-256 |
| DRAWING NO. | 4 |
| DWG. 4 OF 4 | |



Department of
Veterans Affairs