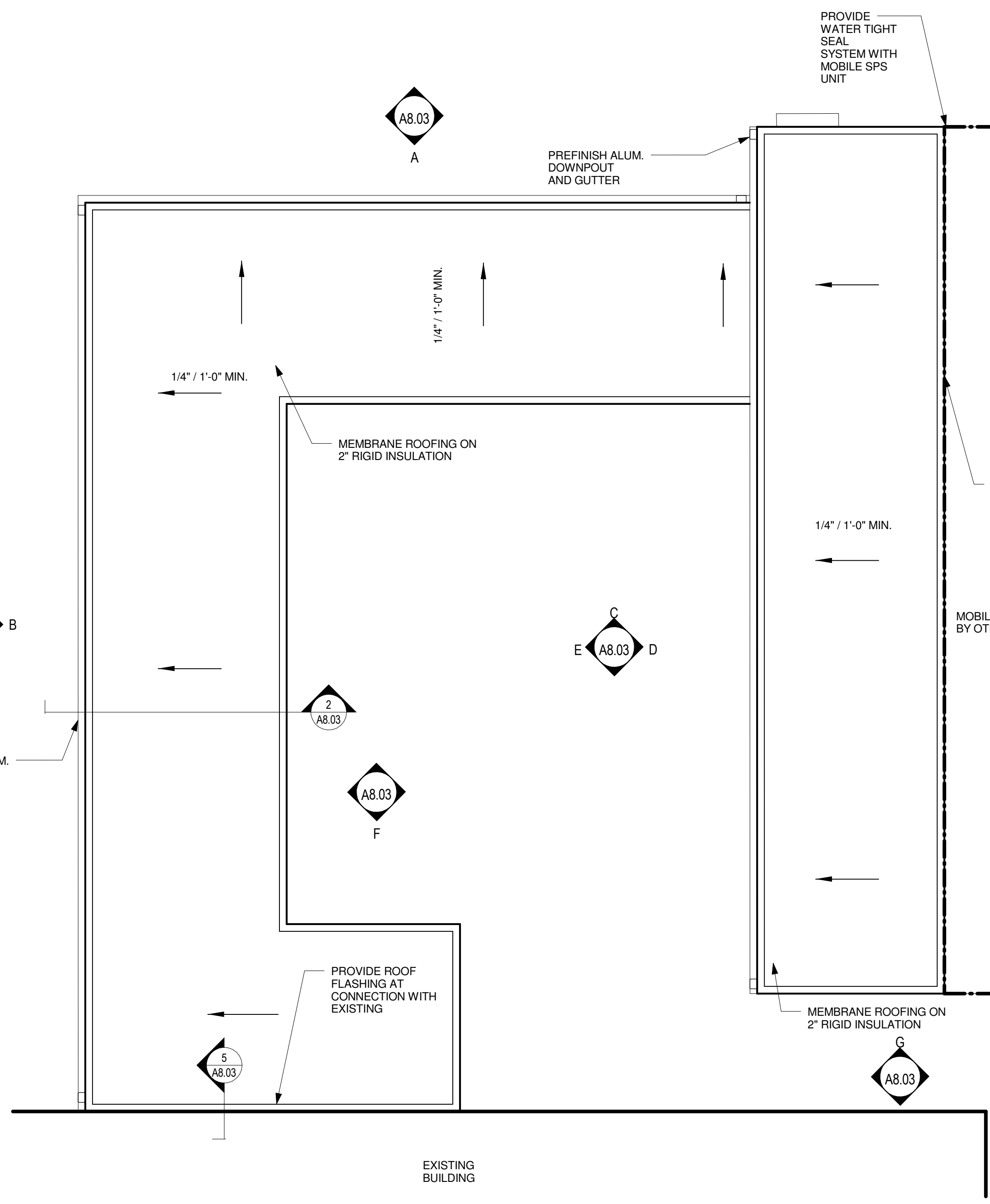
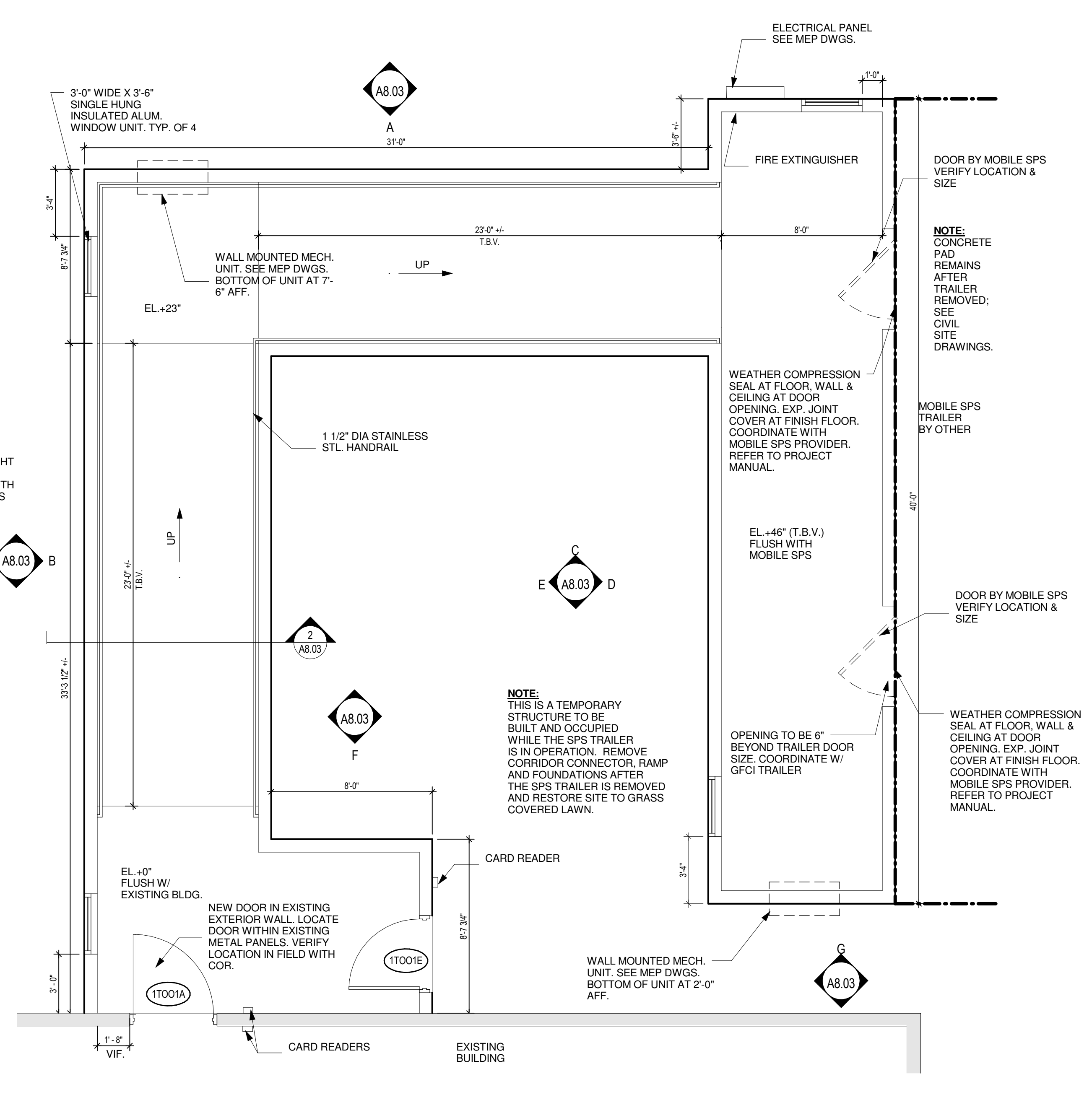


3 ceiling plan - ramp for mobile SPS
A8.02 1/4" = 1'-0"



2 roof plan - ramp for mobile SPS
A8.02 1/4" = 1'-0"



1 floor plan - ramp for mobile SPS
A8.02 1/4" = 1'-0"

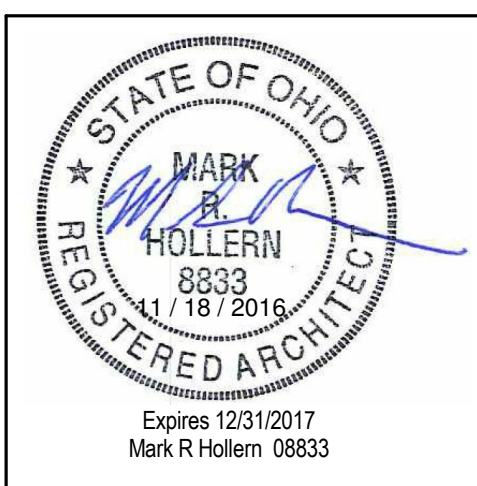
BID DOCUMENTS - 100% SET REVISED	2016 11-18
BID DOCUMENTS - 100% SET	2016 05-11
CONSTRUCTION DOCUMENTS - 95% REVIEW SET	2016 03-30
DESIGN DEVELOPMENT TWO - 75% REVIEW SET	2016 02-03
DESIGN DEVELOPMENT ONE - 50% REVIEW SET	2015 11-25
SCHEMATIC DESIGN REVISIONS - 25% REVIEW SET	2015 10-21
SCHEMATIC DESIGN - 25% REVIEW SET	2015 10-07
Revisions:	Date

CONSULTANTS:

Dynamix Engineering Ltd.
Facility Engineering Consultants
200 Wenden Avenue, 3rd Floor Columbus, OH 43213
Phone: 614.766.1170 Fax: 614.766.1164
Email: dynamix@dynamix-llc.com
www.dynamix-llc.com

Jezerinac Geers & Associates, Inc.
Structural Engineering
5640 Franz Road, Dublin, OH 43017
614.766.5066 Fax 614.766.1233
www.jgaeng.com

EMH&T
Engineers, Surveyors, Planners, Scientists



ARCHITECT/ENGINEERS:

775 Yard Street, Suite 325
Columbus, Ohio 43212
p 614.766.0407
f 614.766.0237
www.ma-architects.com

BID DOCUMENTS - BID			
Drawing Title SPS Temporary Trailer Ramp - plans		Project Title EXPAND LAB AND SPS DEPARTMENTS	
Approved: FARID MEHR, PE CHIEF, ENGINEERING SERVICE		Project Number 757-16-101	
Location CHALMERS P. WYLIE VA AMBULATORY CARE CENTER		Building Number 1A	
Date 2016-11-18	Checked By: RK	Drawn By: AT	Drawing Number A8.02
		 Chalmers P. Wylie Ambulatory Care Center 	