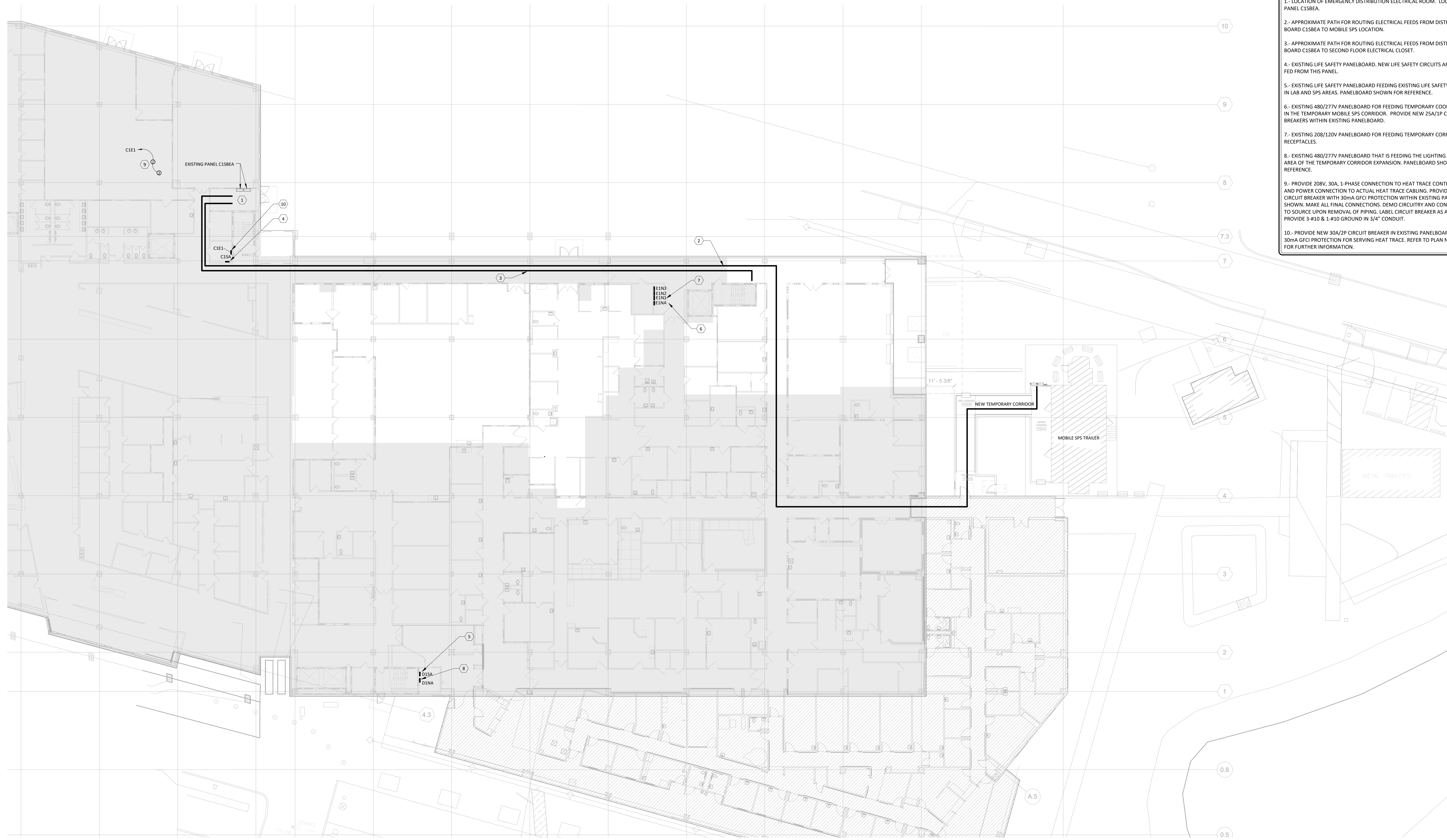


PLAN NOTES

- 1- LOCATION OF EMERGENCY DISTRIBUTION ELECTRICAL ROOM. LOCATION OF PANEL C1SBEA.
- 2- APPROXIMATE PATH FOR ROUTING ELECTRICAL FEEDS FROM DISTRIBUTION BOARD C1SBEA TO MOBILE SPS LOCATION.
- 3- APPROXIMATE PATH FOR ROUTING ELECTRICAL FEEDS FROM DISTRIBUTION BOARD C1SBEA TO SECOND FLOOR ELECTRICAL CLOSET.
- 4- EXISTING LIFE SAFETY PANELBOARD. NEW LIFE SAFETY CIRCUITS ARE TO BE FED FROM THIS PANEL.
- 5- EXISTING LIFE SAFETY PANELBOARD FEEDING EXISTING LIFE SAFETY CIRCUITS IN LAB AND SPS AREAS. PANELBOARD SHOWN FOR REFERENCE.
- 6- EXISTING 480/277V PANELBOARD FOR FEEDING TEMPORARY COOLING UNITS IN THE TEMPORARY MOBILE SPS CORRIDOR. PROVIDE NEW 25A/1P CIRCUIT BREAKERS WITHIN EXISTING PANELBOARD.
- 7- EXISTING 208/120V PANELBOARD FOR FEEDING TEMPORARY CORRIDOR RECEPTACLES.
- 8- EXISTING 480/277V PANELBOARD THAT IS FEEDING THE LIGHTING IN THE AREA OF THE TEMPORARY CORRIDOR EXPANSION. PANELBOARD SHOWN FOR REFERENCE.
- 9- PROVIDE 208V, 30A, 1-PHASE CONNECTION TO HEAT TRACE CONTROLLER AND POWER CONNECTION TO ACTUAL HEAT TRACE CABLING. PROVIDE 30A/2P CIRCUIT BREAKER WITH 30mA GFCI PROTECTION WITHIN EXISTING PANELBOARD SHOWN. MAKE ALL FINAL CONNECTIONS. DEMO CIRCUITRY AND CONDUIT BACK TO SOURCE UPON REMOVAL OF PIPING. LABEL CIRCUIT BREAKER AS A SPARE. PROVIDE 3-#10 & 1-#10 GROUND IN 3/4" CONDUIT.
- 10- PROVIDE NEW 30A/2P CIRCUIT BREAKER IN EXISTING PANELBOARD WITH 30mA GFCI PROTECTION FOR SERVING HEAT TRACE. REFER TO PLAN NOTE #9 FOR FURTHER INFORMATION.



1 ELECTRICAL SITE PLAN
1/16" = 1'-0"

one eighth inch = one foot
 one quarter inch = one foot
 three eighths inch = one foot
 one half inch = one foot
 three quarters inch = one foot
 one inch = one foot
 one and one half inches = one foot
 three inches = one foot

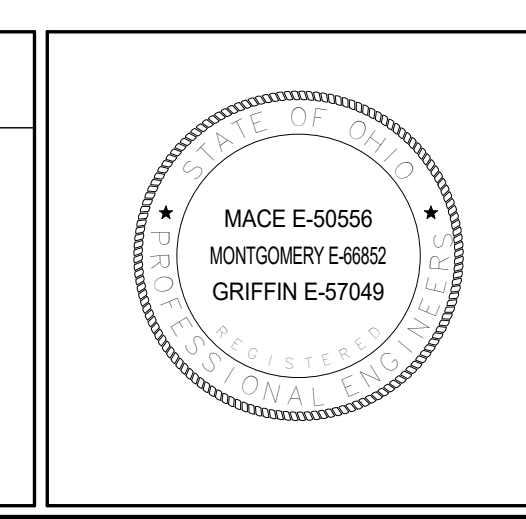
BID DOCUMENTS - 100% SET REVISED	2016 11-18
BID DOCUMENTS - 100% SET	2016 05-11
CONSTRUCTION DOCUMENTS - 95% REVIEW SET	2016 03-30
DESIGN DEVELOPMENT TWO - 75% REVIEW SET	2016 02-03
DESIGN DEVELOPMENT ONE - 50% REVIEW SET	2015 11-25
SCHEMATIC DESIGN REVISIONS - 25% REVIEW SET	2015 10-21
SCHEMATIC DESIGN - 25% REVIEW SET	2015 10-07
Revisions:	Date

CONSULTANTS:

Dynamix Engineering Ltd.
Facility Engineering Consultants

Jezerinac Geers & Associates, Inc.
Structural Engineering

EMHT
Engineers, Surveyors, Planners, Scientists



ARCHITECT/ENGINEERS:

775 Yard Street, Suite 325
Columbus, Ohio 43212
p 614 764 0407
f 614 764 0237
www.ma-architects.com

BID DOCUMENTS - BID	
Drawing Title Electrical Site Plan	Project Number 757-16-101
Approved: FARID MEHR, PE CHIEF, ENGINEERING SERVICE	Building Number 1A
Location CHALMERS P. WYLIE VA AMBULATORY CARE CENTER	Drawing Number E8.01
Date 2016-05-11	Checked By: TS Drawn By: CC