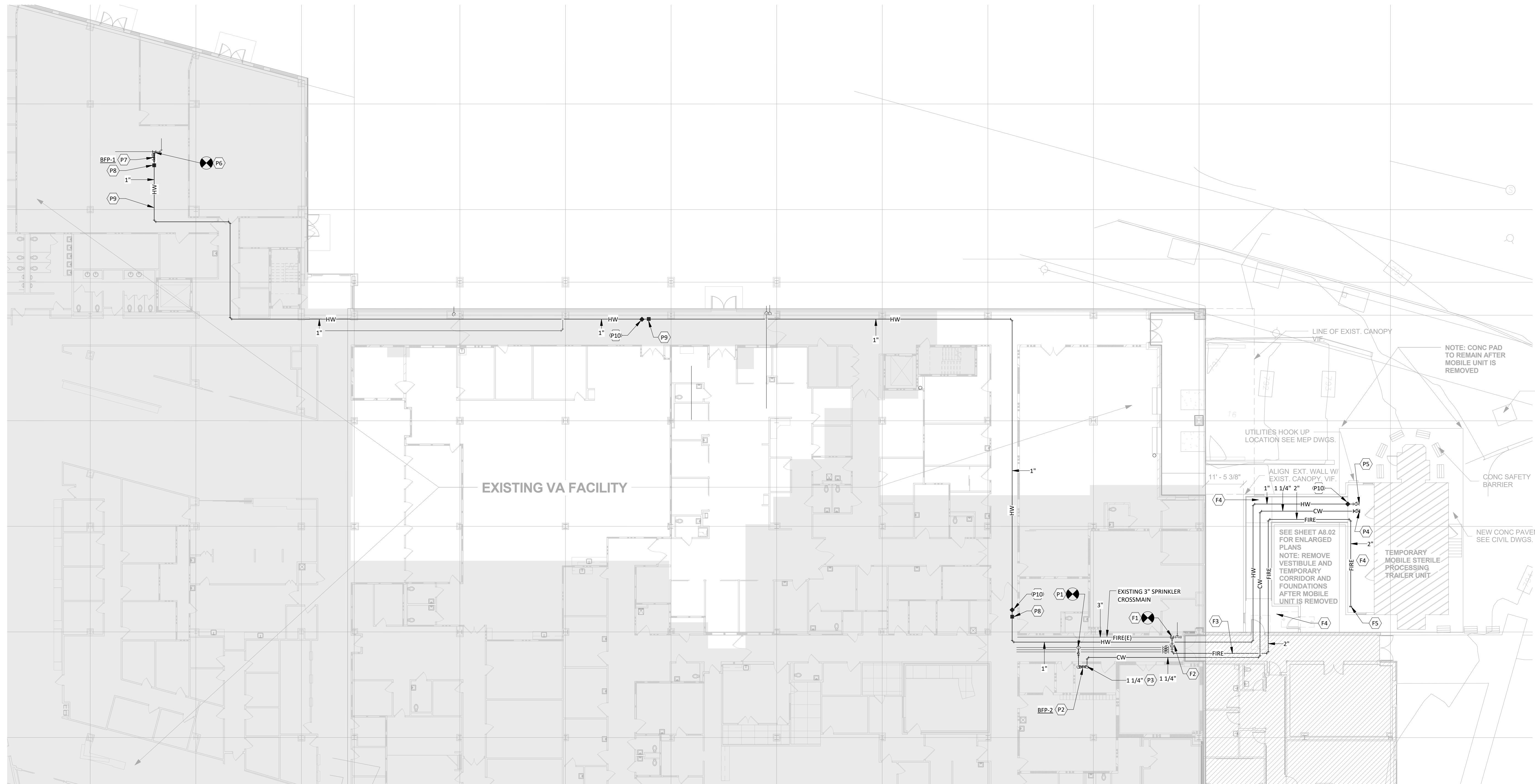


three inches = one foot
 one and one half inches = one foot
 one inch = one foot
 three quarters inch = one foot
 one half inch = one foot
 three eighths inch = one foot
 one quarter inch = one foot
 one eighth inch = one foot
 C:\Users\abaker\Documents\150922 PLUMB Central.mbakor.rvt



1 PLUMBING SITE PLAN
 1/16" = 1'-0"

GENERAL NOTES

- A. PROVIDE HYDRAULIC CALCULATIONS FOR MOBILE SPS TRAILER SPRINKLER SYSTEM.
- B. UPON COMPLETION AND OCCUPATION OF THE RENOVATED SPS AREA ON THE SECOND FLOOR, TEMPORARY CORRIDOR IS TO BE REMOVED. DISCONNECT AND REMOVE ALL EQUIPMENT AND TURN OVER TO THE GOVERNMENT. DRAG ALL PIPING BACK TO THE CONNECTION POINTS.
- (B1) FOR DOMESTIC WATER: THE EXISTING TEES OR FITTINGS AT THE CONNECTION POINTS SHALL BE REMOVED AND THE SOURCE PIPE MADE CONTINUOUS. TURN OVER BACKFLOW PREVENTERS TO THE GOVERNMENT.
- (B2) FOR FIRE PROTECTION: REMOVE PIPING BACK TO THE ISOLATION VALVE. ABANDON LOCKED ISOLATION VALVE IN PLACE.

PLUMBING PLAN NOTES

- P1. MAKE NEW 1-1/4" CONNECTION TO EXISTING 1-1/2" CW AT THIS APPROXIMATE LOCATION OUTSIDE OF 38103A REVERSE OSMOSIS EQUIPMENT ROOM.
- P2. MOUNT 1-1/4" RPZ BACKFLOW PREVENTER AT AN ACCESSIBLE LOCATION ABOVE EXISTING R.O. EQUIPMENT. EXTEND RELIEF DRAIN FROM AIR GAP FITTING TO NEAREST FLOOR DRAIN.
- P3. EXTEND 1-1/4" CW TO THE LOCATION OF MOBILE STERILE PROCESSING SERVICES (SPS) TRAILER.
- P4. 1-1/4" VALVED AND CAPPED CW OUTLET. CONNECTION FOR AND EXTENSION TO CW WATER CONNECTION AT MOBILE SPS TRAILOR TO BE PROVIDED BY MOBILE SPS TECHNICIANS.
- P5. 1" VALVED AND CAPPED HW OUTLET. CONNECTION FOR AND EXTENSION TO HW WATER CONNECTION AT MOBILE SPS TRAILOR TO BE PROVIDED BY MOBILE SPS TECHNICIANS.
- P6. 1" VALVED CONNECTION TO 2-1/2" HW AT THIS APPROXIMATE LOCATION OF DOMESTIC WATER HEATER SYSTEM FOR MOBILE SPS TRAILOR.
- P7. 1" RPZ BACKFLOW PREVENTER. EXTEND RELIEF DRAIN FROM AIR GAP FITTING TO NEAREST FLOOR DRAIN.
- P8. ELECTRICAL HEAT TRACING CIRCUIT POWER CONNECTION FOR 140 DEGREE HOT WATER TEMPERATURE MAINTENANCE CABLE. COORDINATE ELECTRICAL REQUIREMENTS.
- P9. OVERHEAD HW SUPPLY FOR MOBILE SPS TRAILOR. HEAT TRACE FOR HW TEMPERATURE MAINTENANCE. CABLE CIRCUIT MAXIMUM LENGTHS VARY PER MANUFACTURER. THIS DESIGN IS BASED ON 200 FT MAXIMUM CABLE LENGTH. VERIFY MAX CABLE LENGTH WITH CABLE MANUFACTURER.
- P10. ELECTRICAL HEAT TRACING END OF CIRCUIT CONNECTION.

FIRE PROTECTION PLAN NOTES

- F1. FIELD VERIFY LOCATION OF EXISTING ZONE CONTROL VALVE FOR THIS AREA OF THE BUILDING. COORDINATE TEMPORARY SPRINKLER ZONE SHUT-DOWN WITH VA. MAKE NEW 2" CONNECTION TO EXISTING FIRE SPRINKLER MAIN AT THIS APPROXIMATE LOCATION.
- F2. PROVIDE ISOLATION VALVE ABOVE CEILING WITH TAMPER SWITCH FOR MOBILE SPS TRAILOR AT THIS APPROXIMATE LOCATION.
- F3. 2" FIRE SPRINKLER MAIN FOR MOBILE SPS TRAILOR. EXTEND ABOVE CEILING OF TEMPORARY CORRIDOR.
- F4. PROVIDE SPRINKLERS SPACED PER ORDINARY HAZARD OCCUPANCY FOR TEMPORARY CORRIDOR.
- F5. 2" CAPPED FIRE SPRINKLER OUTLET FOR MOBILE SPS TRAILOR. CONNECTION FOR AND EXTENSION TO 2" SPRINKLER WATER SUPPLY AT MOBILE SPS TRAILOR TO BE PROVIDED BY MOBILE SPS TECHNICIANS.

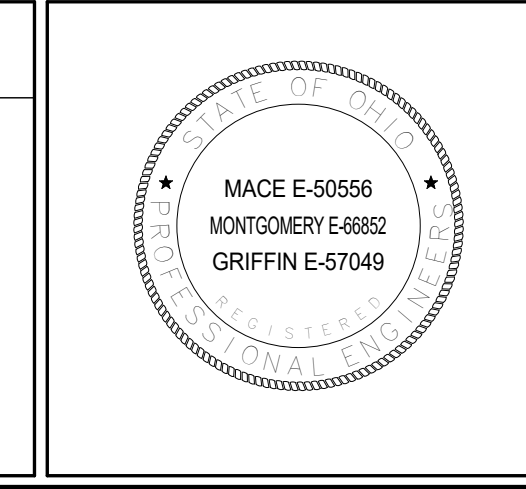
BID DOCUMENTS - 100% SET REVISED	2016 11-18
BID DOCUMENTS - 100% SET	2016 05-11
CONSTRUCTION DOCUMENTS - 95% REVIEW SET	2016 03-30
DESIGN DEVELOPMENT TWO - 75% REVIEW SET	2016 02-03
DESIGN DEVELOPMENT ONE - 50% REVIEW SET	2015 11-25
SCHEMATIC DESIGN REVISIONS - 25% REVIEW SET	2015 10-21
SCHEMATIC DESIGN - 25% REVIEW SET	2015 10-07
Revisions:	Date

CONSULTANTS:

Dynamix Engineering Ltd.
 Facility Engineering Consultants
 800 Grandview Avenue, 3rd Floor Columbus, OH 43215
 Phone: 614.614.1210 Fax: 614.614.1206
 Email: dynamix@engineering-ltd.com

Jezerinac Geers & Associates, Inc.
 Structural Engineering
 5640 Franz Road, Dublin, OH 43017
 614.765.5056 Fax: 614.765.1223
 www.jgaeng.com

EMHT
 Engineers, Surveyors, Planners, Scientists



ARCHITECT/ENGINEERS:

ma
 775 Yard Street, Suite 325
 Columbus, Ohio 43212
 p 614.764.0407
 f 614.764.0237
 www.ma-architects.com

BID DOCUMENTS - BID		Project Title		Project Number	
Plumbing Site Plan		EXPAND LAB AND SPS DEPARTMENTS		757-16-101	
Approved:		Location		Building Number	
FARID MEHR, PE CHIEF, ENGINEERING SERVICE		CHALMERS P. WYLIE VA AMBULATORY CARE CENTER		1A	
Date		Checked By:		Drawing Number	
2016-05-11		DEL		P8.01	
		Drawn By:		DEL	
				VA	

Columbus VA
 Charles F. Wylie Ambulatory Care Center
 US Department of Veterans Affairs