

Remove from project for Contractor construction staging area see revised dwg. GSØ3.01 dated 08.14.18

- ### GENERAL NOTES
- All erosion control measures shall be implemented in accordance with this plan and shall comply with the VA Standards and Specifications and 327 IAC 15-5 or "Rule 5" as outlined in the Indiana Storm Water Quality Manual and on the following website for best management practices (BMPs): <http://www.in.gov/dem/stormwater/2331.htm>
 - The Owner must notify IDEM's "Rule 5" Coordinator at (317) 233-1854 and the C.O.R. at (765) 668-4401 at least 48 hours prior to any land disturbing activity and upon completion so that final site inspections may be performed for compliance.
 - If construction is not completed within five (5) years or if any early release from the permit is not received as specified under 327 IAC 15-5-8, the C.O.R. shall renew the permit. Once construction is completed for the entire project, the C.O.R. must complete the IDEM "Notification of Termination" and forward it to IDEM.
 - A temporary construction entrance shall be installed and maintained to minimize the amount of soil tracked onto public/private roadways. A tentative location has been shown in the plan. The Contractor shall submit actual location(s) to the C.O.R. for approval. Entrance(s) shall be installed to any other construction activity.
 - Storm sewer inlets within the construction limits and existing inlets nearby that may be impacted by construction shall be protected as specified on the plan, or an approved equal. The intent of this measure is to prevent sediment from entering the drainage system.
 - Until the project is accepted by the C.O.R., the Contractor shall maintain all erosion control measures to prevent sediment from entering public and private storm sewers and from leaving the project site. Contractor shall implement and maintain any additional measures at the request of the Local and/or State Stormwater and Erosion Control Inspectors at no additional cost.
 - SILT FENCE** - The location of the silt fence shown on the plan shall act as a guide for the Contractor to follow. Actual field conditions shall indicate the location and amount of silt fence required to prevent sediment from entering public and private storm sewers and from leaving the project site. Silt fence or other appropriate sediment barriers shall be installed a minimum of 10 feet away from the toe of slope of any onsite or offsite stockpile, borrow, and/or disposal areas.
 - Soil material shall be temporarily stockpiled onsite as necessary during the construction process in accordance with "Rule 5" guidelines, and any excess material not needed shall be hauled away and disposed of in accordance with "Rule 5" guidelines. Please refer to the "Soil Stockpile Detail" on following SWPPP Sheet for additional information.
 - Locations for temporary soil stockpiling and construction staging, concrete washout structure, and dewatering operations (if required) shall be determined by the Contractor and C.O.R. prior to construction.
 - All disturbed areas shall be stabilized with seeding stabilization measures. Temporary Seeding shall take place as soon as possible on any bare or thinly vegetated areas which have less than 70 percent cover and will remain inactive for a period of 15 days or more. Temporary and Permanent Seeding shall be in accordance with the Indiana Storm Water Quality Manual and as specified on the SWPPP Sheet titled "General Seeding and Surface Stabilization Procedures".
 - Contractor shall follow the manufacturer's guidelines for installation and maintenance of Erosion Control Blankets. Please refer to the "Slope Stabilization Detail" on following SWPPP Sheet for additional information.

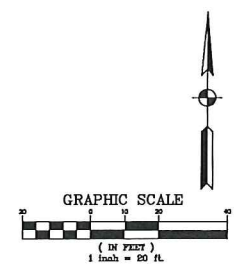
INSPECTIONS / REPORTING

The Owner shall require the Contractor to review all erosion control devices on a weekly basis and/or within 24 hours of every 1/2 inch rainstorm event. Contractor shall use an approved inspection report form for all site inspections, and any resulting problems shall be immediately reviewed and corrected by the Contractor at no additional cost to the C.O.R.

- ### LEGEND
- (IP) Protection (See SWPPP Sheet GS13)
 - SF Silt Fence (See SWPPP Sheet GS12)
 - Temporary Construction Entrance (See SWPPP Sheet GS12)

UTILITY INFORMATION

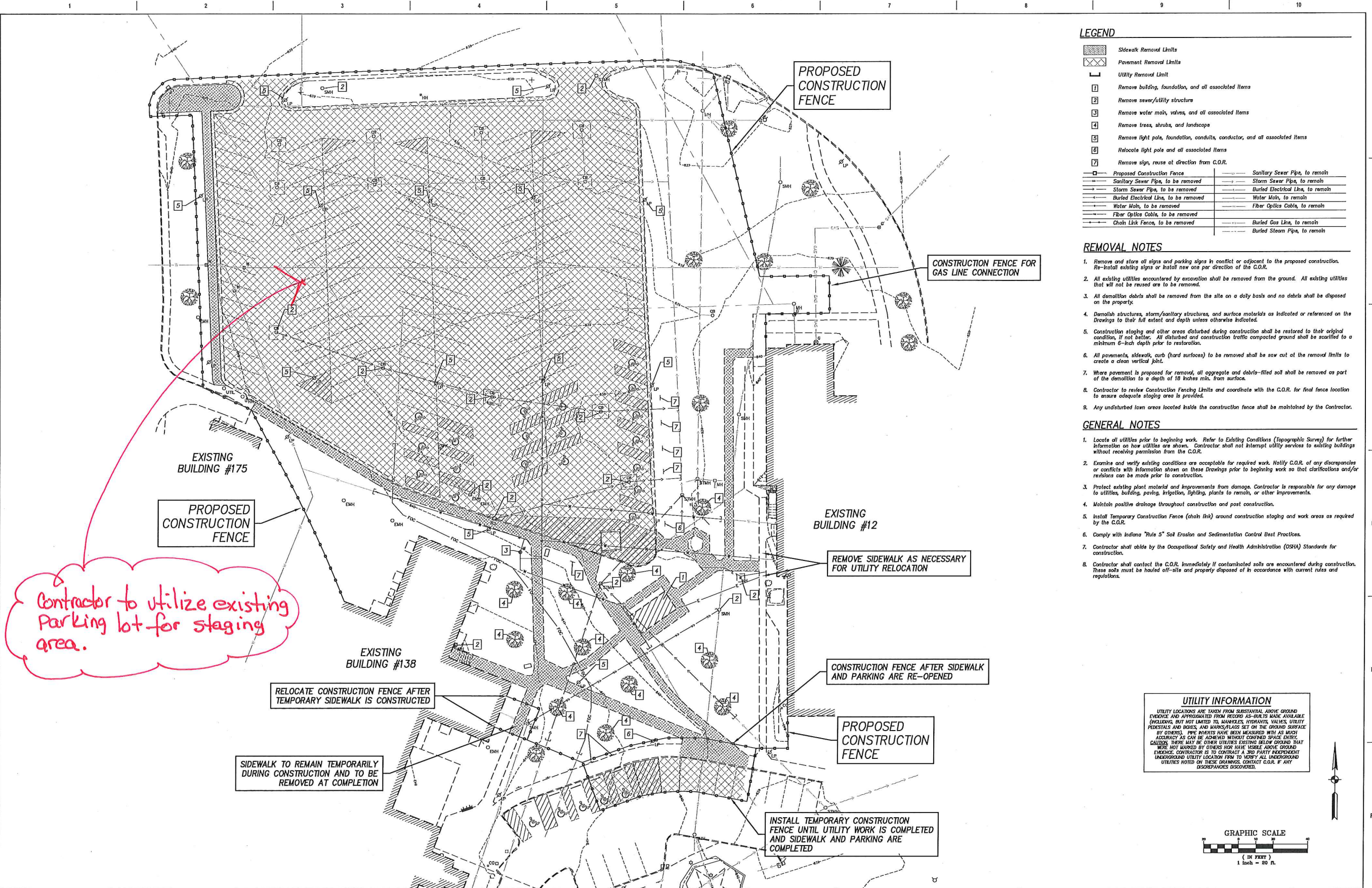
UTILITY LOCATIONS ARE TAKEN FROM SUBSTANTIAL ABOVE GROUND EVIDENCE AND APPROXIMATED FROM RECORDS AS-BUILTS MADE AVAILABLE (INCLUDING, BUT NOT LIMITED TO, MANHOLES, INTERMITS, VALVES, UTILITY RECORDS AND BOXES, AND MANHOLE SETS ON THE GROUND SURFACE BY OTHERS). PIPE INVERTS HAVE BEEN MEASURED WITH AS MUCH ACCURACY AS CAN BE ACHIEVED WITHOUT CONFINED SPACE ENTRY. CAUTION: THERE MAY BE OTHER UTILITIES EXISTING BELOW GROUND THAT WERE NOT MARKED BY OTHERS. HOW HAVE VISIBLE ABOVE GROUND EVIDENCE. CONTRACTOR TO CONTACT A 3RD PARTY INDEPENDENT UNDERGROUND UTILITY LOCATION FIRM TO VERIFY ALL UNDERGROUND UTILITIES NOTED ON THESE DRAWINGS. CONTACT COR IF ANY DISCREPANCIES DISCOVERED.



ENGINEERS OF RECORD ABONMARCHE CONSULTANTS, INC. 750 LINCOLN WAY EAST SOUTH BEND, IN 46601 574.232.8700 BRADLEY E. MOSNESS, PE (PROJECT NO. 15-1050)		ARCHITECT OF RECORD KORDA, INC. 1650 WATERMARK DRIVE, SUITE 200 COLUMBUS, OH 43215 614.487.1650 STAN KMONK		ARCHITECT OF RECORD A/E: HOR ARCHITECTURE, INC. 600 HENNEPIN AVE SUITE 260 MINNEAPOLIS, MN 55403 612.524.6000 MICHAEL R. NELSON, AIA, NCARB, LEED AP BD+C		STAMP Office of Construction and Facilities Management VA U.S. Department of Veterans Affairs		Drawing Title STORMWATER POLLUTION PREVENTION PLAN (SWPPP) Approved: Project Director		Phase ISSUED FOR CONSTRUCTION FULLY SPRINKLERED		Project Title BUILD PRIMARY CARE CLINIC - PACT Building Number 138 Location 1700 E 38TH ST, MARION, IN 46953 Issue Date 03/19/2018 Checked BEM / DSK Drawn KG		Project Number 610-303 / 269296 Building Number 138 Drawing Number GS11.01	
--	--	--	--	---	--	--	--	--	--	---	--	--	--	--	--

C:\projects\2018\15-1050 VA Watermark_Cor_Corner_Plan\DWG\15-1050 Arch Title Rev.dwg
 VA FORM 08-6231

08.14.18



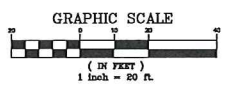
LEGEND

[Hatched Box]	Sidewalk Removal Limits	[Dashed Line]	Sanitary Sewer Pipe, to remain
[Cross-hatched Box]	Pavement Removal Limits	[Dashed Line]	Storm Sewer Pipe, to remain
[Dashed Line]	Utility Removal Limit	[Dashed Line]	Buried Electrical Lns, to remain
[1]	Remove building, foundation, and all associated items	[Dashed Line]	Buried Electrical Lns, to be removed
[2]	Remove sewer/utility structure	[Dashed Line]	Water Mains, to remain
[3]	Remove water main, valves, and all associated items	[Dashed Line]	Water Mains, to be removed
[4]	Remove trees, shrubs, and landscape	[Dashed Line]	Fiber Optics Cable, to remain
[5]	Remove light pole, foundation, conduits, conductor, and all associated items	[Dashed Line]	Fiber Optics Cable, to be removed
[6]	Relocate light pole and all associated items	[Dashed Line]	Chalk Link Fence, to remain
[7]	Remove sign, reuse at direction from C.O.R.	[Dashed Line]	Buried Gas Lns, to remain
[8]	Proposed Construction Fence	[Dashed Line]	Buried Steam Pipe, to remain

- REMOVAL NOTES**
- Remove and store all signs and parking signs in conflict or adjacent to the proposed construction. Re-install existing signs or install new one per direction of the C.O.R.
 - All existing utilities encountered by excavation shall be removed from the ground. All existing utilities that will not be reused are to be removed.
 - All demolition debris shall be removed from the site on a daily basis and no debris shall be disposed on the property.
 - Demolish structures, storm/sanitary structures, and surface materials as indicated or referenced on the Drawings to their full extent and depth unless otherwise indicated.
 - Construction staging and other areas disturbed during construction shall be restored to their original condition, if not better. All disturbed and construction traffic compacted ground shall be scarified to a minimum 6-inch depth prior to restoration.
 - All pavements, sidewalks, curb (hard surfaces) to be removed shall be saw cut at the removal limits to create a clean vertical joint.
 - Where pavement is proposed for removal, all aggregate and debris-filled soil shall be removed as part of the demolition to a depth of 18 inches min. from surface.
 - Contractor to review Construction Fencing Limits and coordinate with the C.O.R. for final fence location to ensure adequate staging area is provided.
 - Any undisturbed lawn areas located inside the construction fence shall be maintained by the Contractor.

- GENERAL NOTES**
- Locate all utilities prior to beginning work. Refer to Existing Conditions (Topographic Survey) for further information on how utilities are shown. Contractor shall not interrupt utility services to existing buildings without receiving permission from the C.O.R.
 - Examine and verify existing conditions are acceptable for required work. Notify C.O.R. of any discrepancies or conflicts with information shown on these Drawings prior to beginning work so that clarifications and/or revisions can be made prior to construction.
 - Protect existing plant material and improvements from damage. Contractor is responsible for any damage to utilities, building, paving, irrigation, lighting, plants to remain, or other improvements.
 - Maintain positive drainage throughout construction and post construction.
 - Install Temporary Construction Fence (chalk link) around construction staging and work areas as required by the C.O.R.
 - Comply with Indiana "Rule 5" Soil Erosion and Sedimentation Control Best Practices.
 - Contractor shall abide by the Occupational Safety and Health Administration (OSHA) Standards for construction.
 - Contractor shall contact the C.O.R. immediately if contaminated soils are encountered during construction. These soils must be hauled off-site and properly disposed of in accordance with current rules and regulations.

UTILITY INFORMATION
 UTILITY LOCATIONS ARE TAKEN FROM SUBSTANTIAL ABOVE GROUND EVIDENCE AND APPROXIMATED FROM RECORD AS-BUILTS MADE AVAILABLE (INCLUDING, BUT NOT LIMITED TO, MANHOLES, HYDRANTS, VALVES, UTILITY PEDESTALS AND BOXES, AND MARKS/FLAGS SET ON THE GROUND SURFACE BY OTHERS). PIPE DEPTHS HAVE BEEN MEASURED WITH AS MUCH ACCURACY AS CAN BE ACHIEVED WITHOUT CONFINED SPACE ENTRY. CAUTION: THERE MAY BE OTHER UTILITIES EXISTING BELOW GROUND THAT WERE NOT MARKED BY OTHERS NOR HAVE VISIBLE ABOVE GROUND EVIDENCE. CONTRACTOR IS TO CONTACT A 3RD PARTY INDEPENDENT UNDERGROUND UTILITY LOCATION FIRM TO VERIFY ALL UNDERGROUND UTILITIES NOTED ON THESE DRAWINGS. CONTACT C.O.R. IF ANY DISCREPANCIES DISCOVERED.



ENGINEERS OF RECORD ABONMARCHÉ ABONMARCHÉ CONSULTANTS, INC. 750 LINCOLN WAY EAST SOUTH BEND, IN 46601 574.232.8700 BRADLEY E. MOSNESS, PE (PROJECT NO. 15-1050)		ARCHITECT OF RECORD KORDA KORDA, INC. 600 HENNEPIN AVE SUITE 260 MINNEAPOLIS, MN 55403 612.524.6000 MICHAEL R. NELSON, AIA, NCARB, LEED AP BD+C		STAMP BRADLEY E. MOSNESS REGISTERED PROFESSIONAL ENGINEER STATE OF INDIANA FE10707531 03-19-18	Office of Construction and Facilities Management VA U.S. Department of Veterans Affairs	Drawing Title: REMOVALS PLAN Approved: Project Director	Phase: ISSUED FOR CONSTRUCTION FULLY SPRINKLERED	Project Title: BUILD PRIMARY CARE CLINIC - PACT Project Number: 610-303 / 269296 Building Number: 138 Location: 1700 E 38TH ST. MARION, IN 46953 Issue Date: 03/19/2018 Checked: BEM / DSK Drawn: KG	Drawing Number: GS03.01
---	--	--	--	--	--	---	---	---	--------------------------------

C:\projects\2015-1050\VA_MarionDCO_Cad\Drawings\Plan\GS03.01.dwg
 VA FORM 08-6231

08.14.18