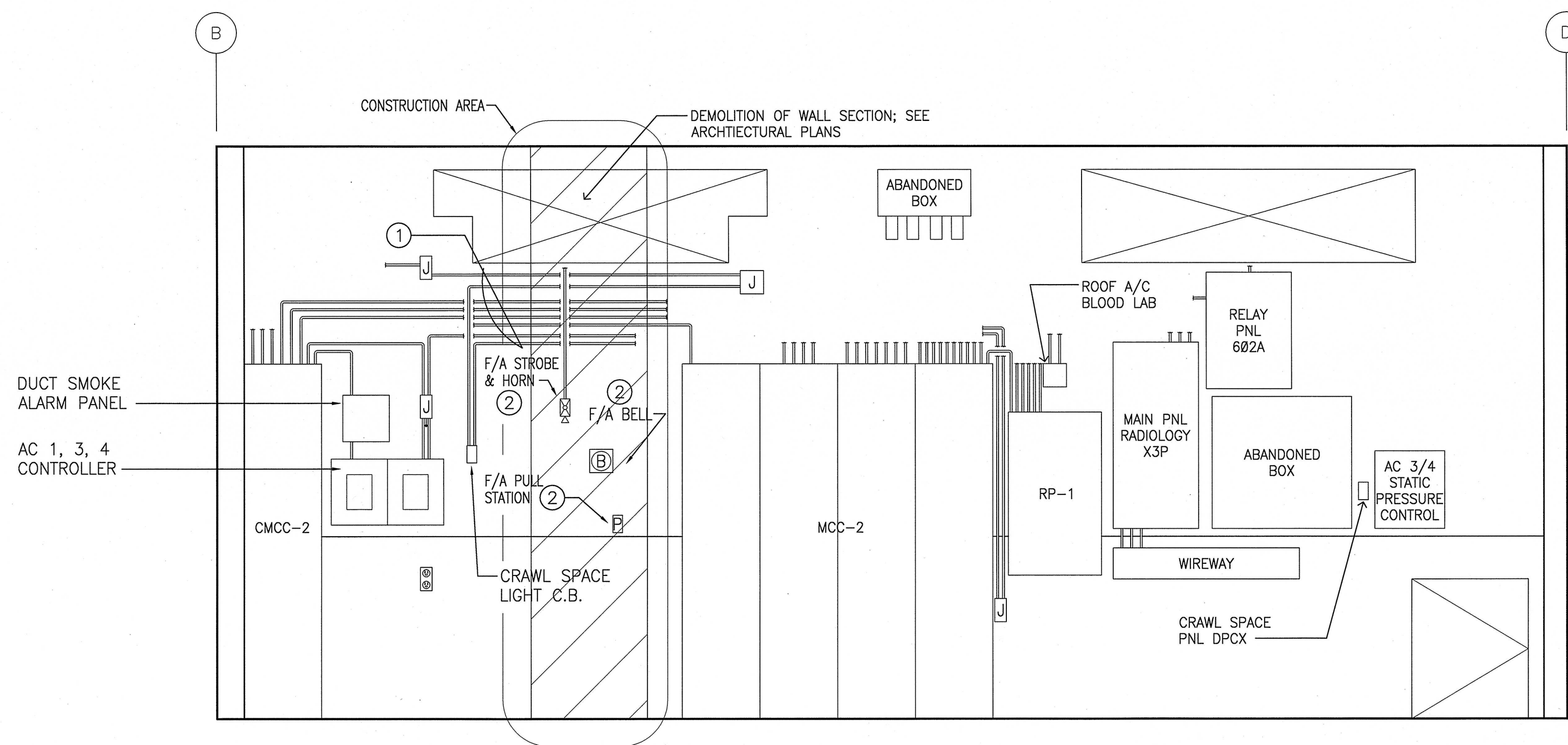


ELECTRICAL DEMO PLAN -AC-1,2,3,4
SCALE: NONE



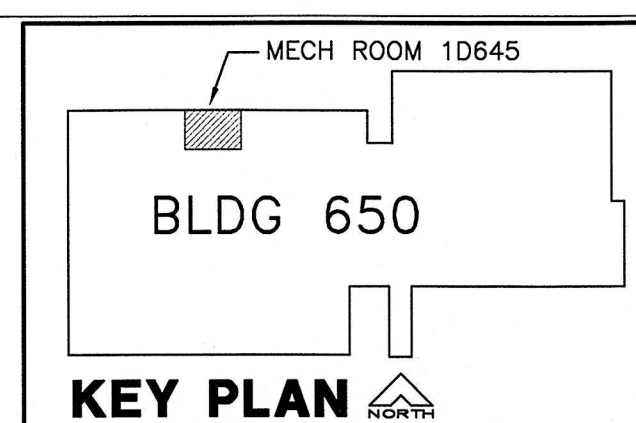
1 (E) EAST WALL @ MECH RM 1D645
SCALE: NONE

SHEET NOTES:

- 1 PROVIDE TEMPORARY ROUTING ON CONDUITS AND WIRING PASSING THROUGH CONSTRUCTION AREA AND REINSTALL CONDUITS AND WIRING AFTER CONSTRUCTION
- 2 RELOCATE EQUIPMENT. CONTRACTOR IS TO COORDINATE WITH GOVERNMENT ON THE NEW LOCATION.

GENERAL NOTES:

1. AHU EQUIPMENT AND DEVICES TO BE DEMOLISHED ARE SHOWN FOR REFERENCE ONLY AND IN NO WAY REPRESENT THE TOTAL NUMBER AND EXACT LOCATION OF THE EQUIPMENT AND DEVICES. CONTRACTOR IS TO DISCONNECT AND REMOVE ALL ASSOCIATED DEVICES, WIRES, EXPOSED AND ABOVE CEILING CONDUITS, OUTLET BOXES, JUNCTION BOXES, ETC.
2. IN-WALL AND BELOW FLOOR CONDUITS AND JUNCTION BOXES ARE TO REMAIN. CAP AND SEALED. REPAIR WALL AND FLOOR TO MATCH EXISTING.
3. CONTRACTOR SHALL VERIFY (E) CONDITIONS
4. DISCONNECT POWER AND CONTROL TO (E) THERMOSTAT. CONDUIT AND WIRING ARE TO REMAIN FOR REWIRE TO (N) THERMOSTAT.
5. REFER TO MECHANICAL DRAWINGS FOR INFORMATION.



K.F. DAVIS ENGINEERING, INC
530 LA GONDA WAY, SUITE E
DANVILLE, CA 94526

Revisions:	Drawing Title:	Project Title:	Date:
	ELECTRICAL DEMOLITION PLAN --MECHANICAL ROOM	BLDG 650 REPLACE AIR HANDLERS 1 THRU 4, 7 AND 9 - 15	08/25/08
Approved:	Approved: Medical Center Director	Building Number:	Project No.:
			61244-07-342
Approved:	Approved: Chief, Engineering Service	Location:	DRAWING No.:
		MATHER VAMC MATHER CALIFORNIA	E2.3
			Dwg. Of

