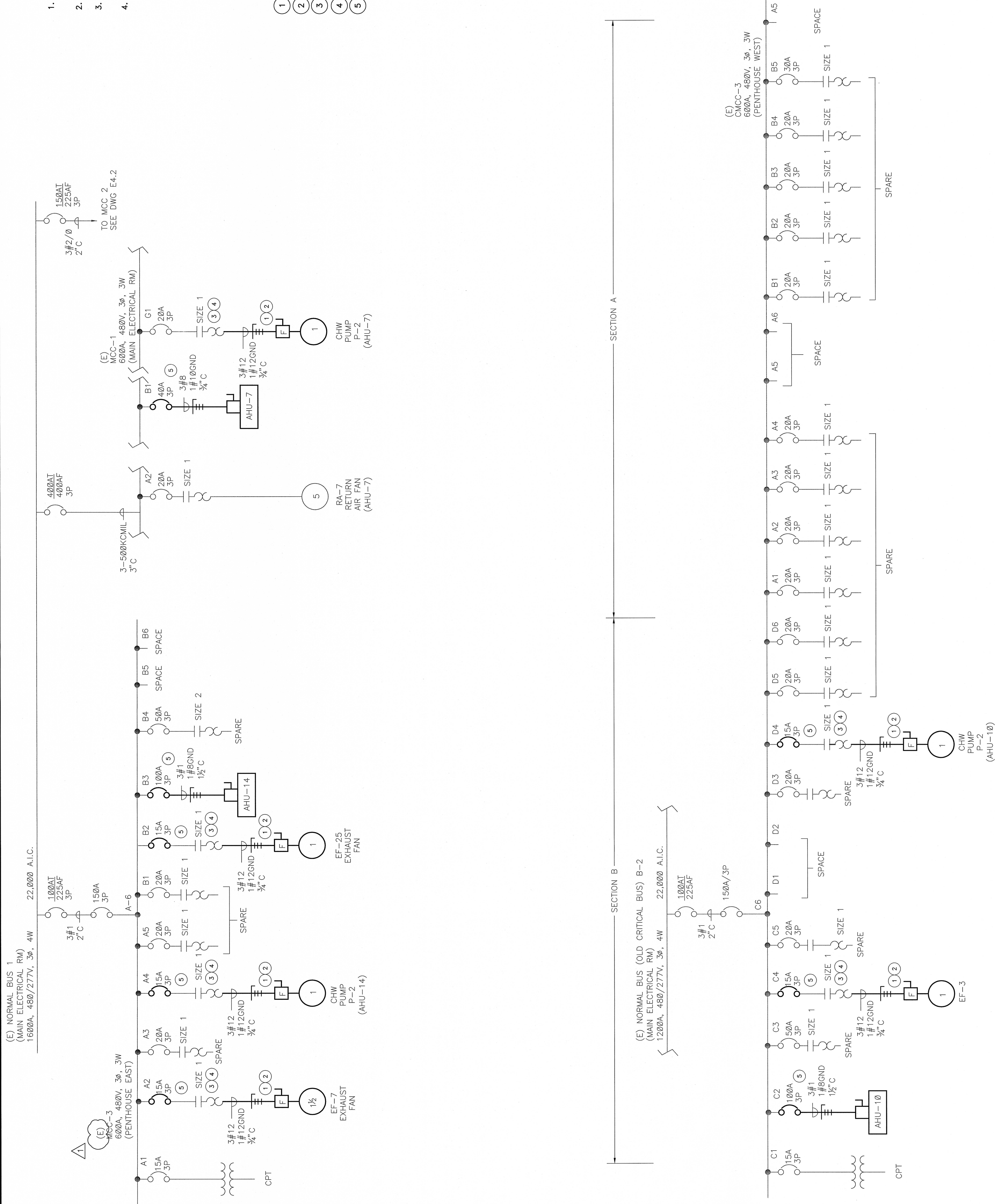


**GENERAL NOTES:**

1. CONTRACTOR SHALL PROVIDE ALL CONDUITS AND WIRING PER MANUFACTURER'S RECOMMENDATION FOR THE AHU CONTROL, MONITORING AND ALARM SYSTEMS.
2. SEE MECHANICAL DRAWINGS FOR REQUIREMENTS.
3. (N) CIRCUIT BREAKER SHALL MATCH OR EXCEED MOTOR CONTROL CENTER INTERRUPTING RATING.
4. WIRE C.B. TO MCC BRANCH CIRCUIT TERMINAL BLOCK AS REQUIRED.




**SHEET NOTES:**

- 1 30A, 600VAC, 3P HEAVY DUTY FUSIBLE SAFETY SWITCH IN NEMA 3R ENCLOSURE.
- 2 PROVIDE FUSES PER PUMP MANUFACTURER'S RECOMMENDATIONS.
- 3 PROVIDE O.L. HEATER PER EQUIPMENT MANUFACTURER'S RECOMMENDATIONS.
- 4 PROVIDE 3/4" C AND WIRING FOR CONTROL.
- 5 PROVIDE (N) C.B.



**SINGLE LINE DIAGRAM - NEW WORK**

SCALE: NONE

  <b>K.F. DAVIS ENGINEERING, INC.</b> 550 LA GONDA WAY, SUITE E DANVILLE, CA 94526	Revisions:  <b>DATED 11/10/08</b>	Drawing Title: <b>SINGLE LINE DIAGRAM AHU-7,10,14 NEW WORK</b>	Project Title: <b>BLDG 650 REPLACE AIR HANDLERS 1 THRU 4, 7 AND 9 - 15</b>	Date: <b>08/25/08</b>
	Approved:	Approved: Medical Center Director	Building Number:	Project No.: <b>61244-07-342</b>
	Approved:	Approved: Chief, Engineering Service	Location:	Drawing No.: <b>E4.1</b>
	Approved:	Approved: Chief, Engineering Service	<b>MATHER VAMC MATHER CALIFORNIA</b>	Eng. of: