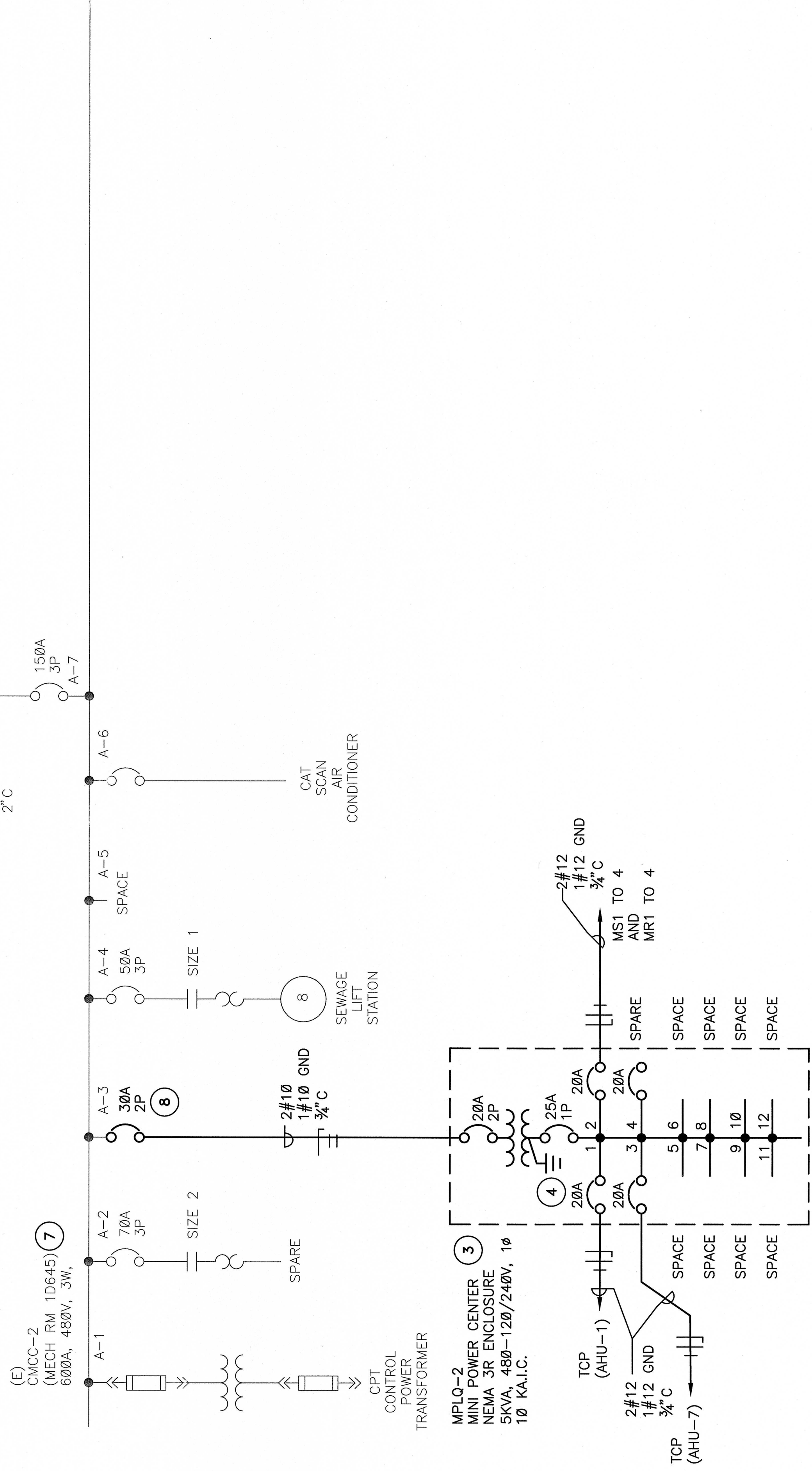
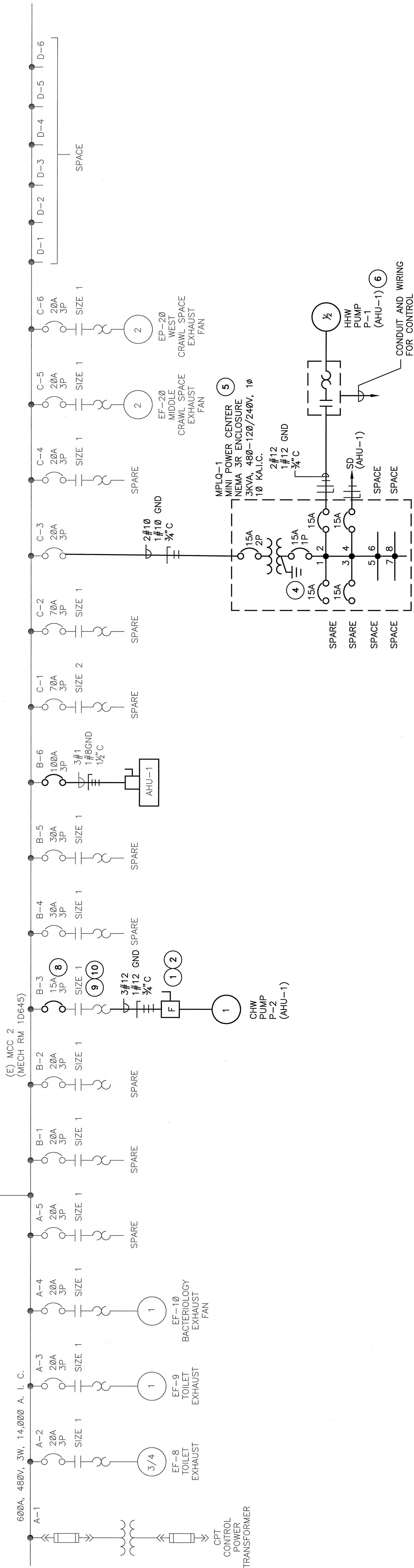


(E) PANELBOARD DPE-A
(MAIN ELECTRICAL ROOM)
800A, 480/277V, 3ø, 4W

42,000 A.I.C.



(E) FROM NORMAL BUS NO. 1
SEE DWG. E4.1



SINGLE LINE DIAGRAM - NEW WORK

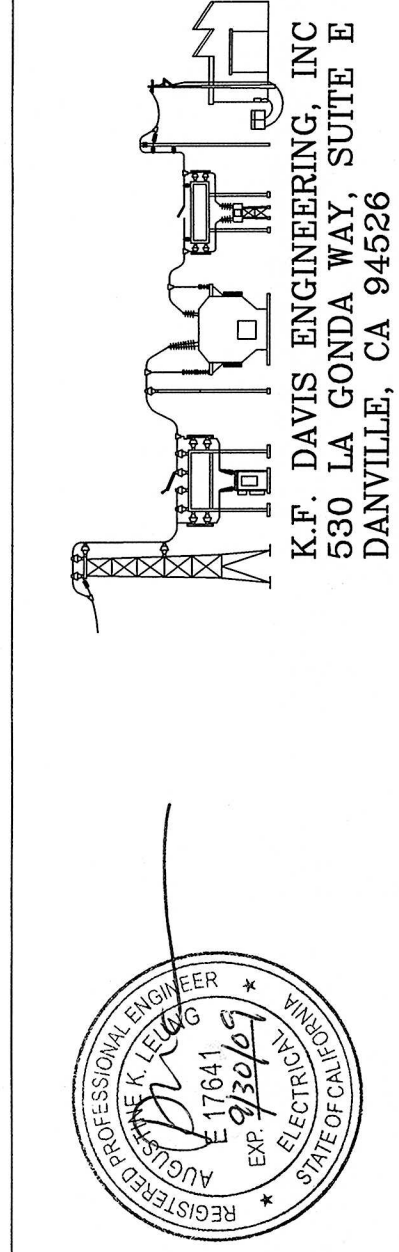
SCALE: NONE

GENERAL NOTES:

1. CONTRACTOR SHALL PROVIDE ALL CONDUITS AND WIRING PER MANUFACTURER'S RECOMMENDATION FOR THE AHU CONTROL, MONITORING AND ALARM SYSTEMS.
2. SEE MECHANICAL DRAWINGS FOR REQUIREMENTS.
3. (N) CIRCUIT BREAKER SHALL MATCH OR EXCEED MOTOR CONTROL CENTER INTERRUPTING RATING.
4. WIRE C.B. TO MCC BRANCH CIRCUIT TERMINAL BLOCK AS REQUIRED.

SHEET NOTES:

- 1 30A, 600VAC, 3P HEAVY DUTY FUSIBLE SAFETY SWITCH IN NEMA 3R ENCLOSURE.
- 2 PROVIDE FUSES PER PUMP MANUFACTURER'S RECOMMENDATIONS.
- 3 MINI POWER CENTER SHALL BE EATON/CUTLER HAMMER CAT. NO. P48G11S05P OR EQUAL.
- 4 TRANSFORMER NEUTRAL GROUND BOND TO THE CLOSEST GROUNDED BUILDING STEEL STRUCTURE OR METALLIC WATER PIPE
- 5 MINI POWER CENTER SHALL BE EATON/CUTLER HAMMER CAT. NO. P4811S03P OR EQUAL.
- 6 PUMP PACKAGE
- 7 IN PHASE 2, STAGE 3, MOTOR CONTROL CMCC-2 WILL BE RELOCATED TO EQUIPMENT BRANCH DISTRIBUTION PANEL QH 650A (225A, 480/277V, 3PHASE, 4W,22,000 A.I.C.) AND SUPPLIED BY A-16QAT/225AF, 3P, CIRCUIT BREAKER. (FOR INFORMATION ONLY-NOT IN CONTRACT)
- 8 PROVIDE (N) C.B.
- 9 PROVIDE O.L. HEATER PER EQUIPMENT MANUFACTURER'S RECOMMENDATIONS.
- 10 PROVIDE 3/4" C AND WIRING FOR CONTROL.



Revisions:	Drawing Title:	Project Title:	Date:
<div>△ DATED 11/10/08</div>	SINGLE LINE DIAGRAM AHU-1 NEW WORK	BLDG 650 REPLACE AIR HANDLERS THRU 4, 7 AND 9 - 15	08/25/08
Approved:	Approved: Medical Center Director	Project No:	Project No:
Approved:	Approved: Chief Engineering Service	Building Number:	61244-07-342
		Drawing No:	E4.2
		Location:	MATHER VAMC
			Dept - 01

