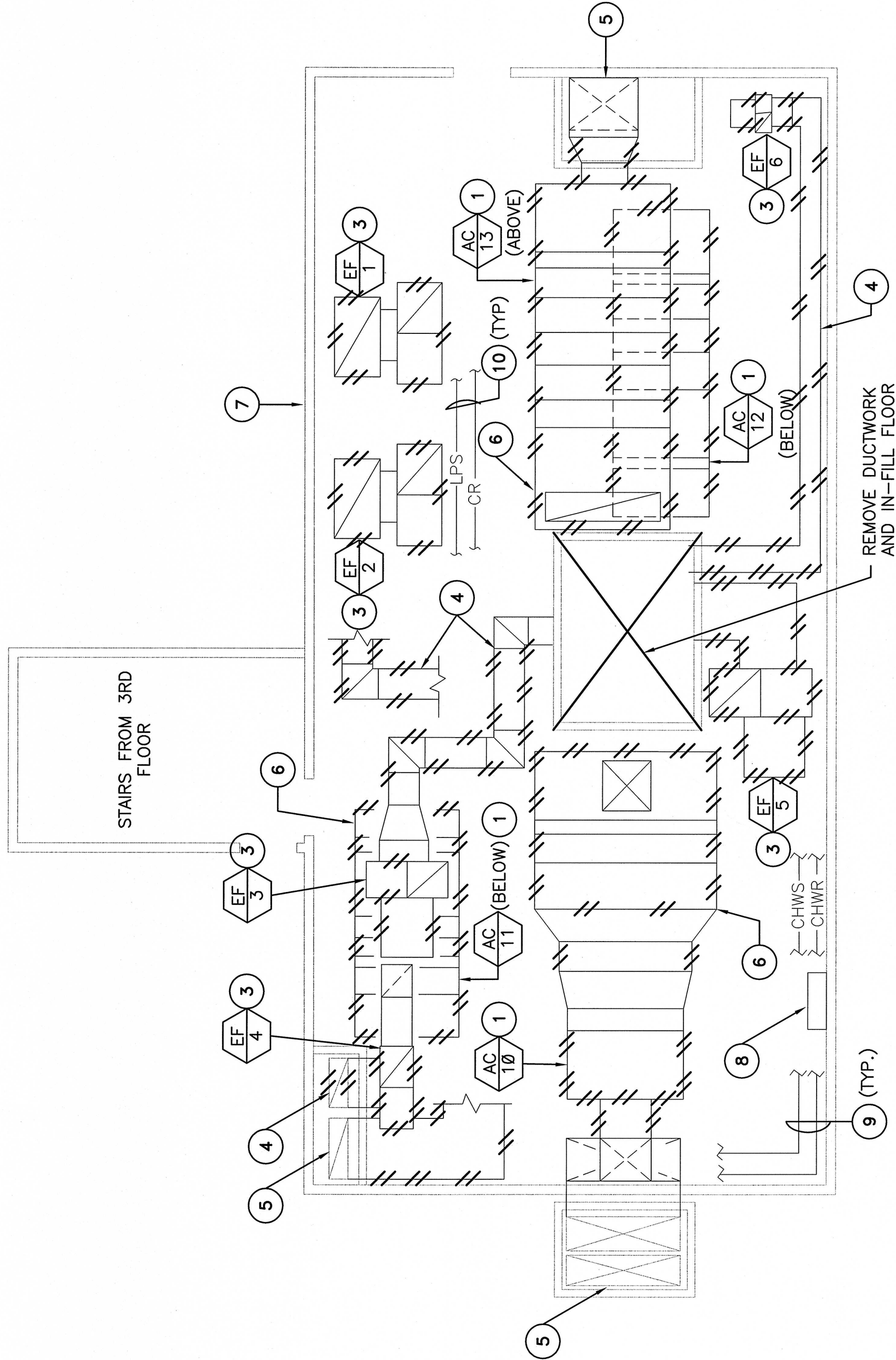


GENERAL NOTES:

- CUT & PATCH AS REQUIRED FOR INSTALLATION OF WORK, PATCH TO MATCH (E) ADJACENT MATERIALS & FINISHES.
- SEE H1.1 FOR PHASING NOTES

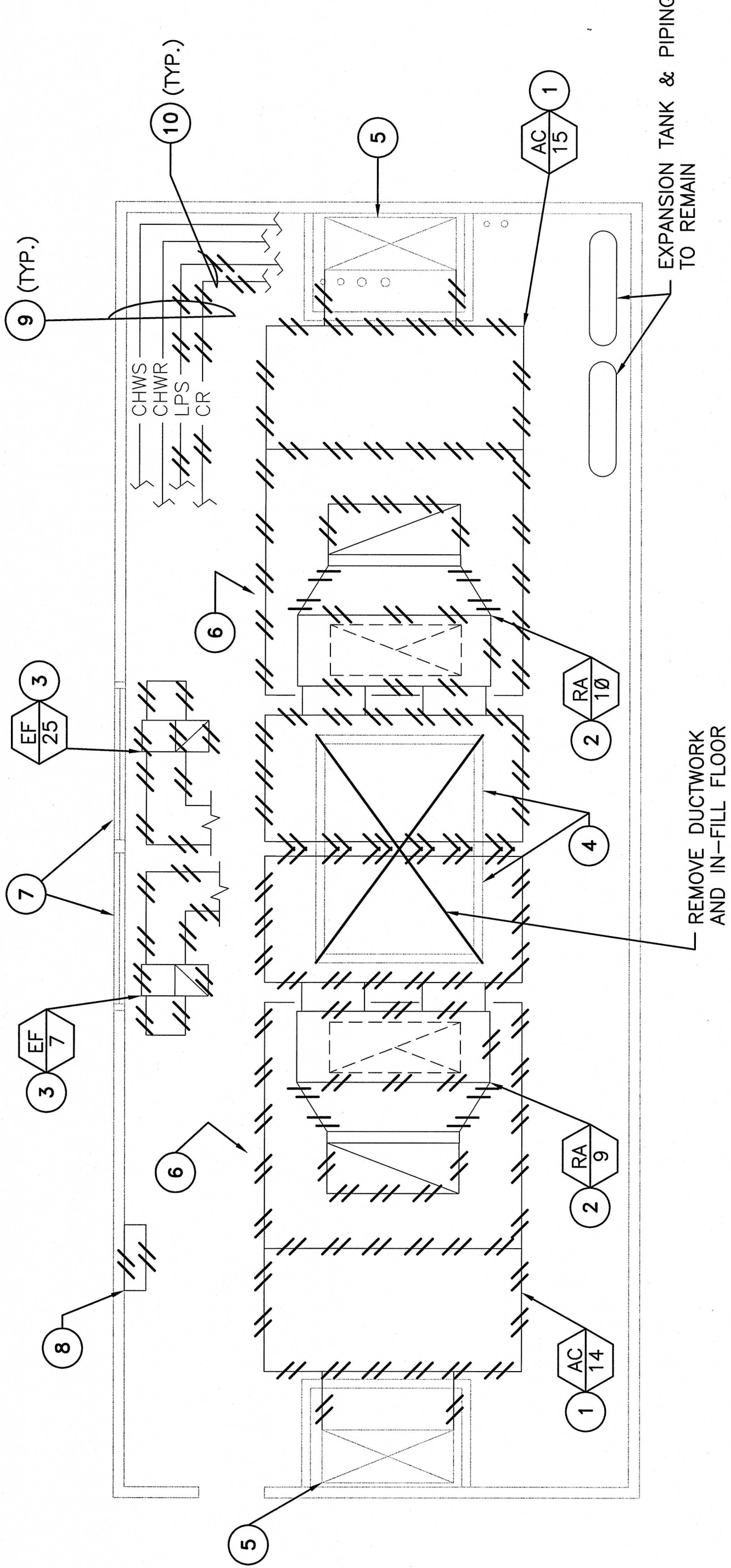
SHEET NOTES:

- REMOVE AIR HANDLER, INCLUDING BRANCH PIPING, PUMPS, CONTROLS, ETC.
- REMOVE RETURN FAN, DUCTWORK, HANGERS, SUPPORT, ETC.
- REMOVE EXHAUST FAN, DUCTWORK, HANGERS, SUPPORT, ETC.
- REMOVE DUCTWORK, INSULATION, HANGERS, SUPPORT, ETC.
- DUCT DOWN THRU FLOOR TO REMAIN, CONNECT TO (N) WORK.
- REMOVE CONCRETE PAD, HANGERS, SUPPORTS, ETC. PATCH FLOOR WALL AND ROOF OPENINGS WATER TIGHT.
- REMOVE FILTERS AND REPLACE WITH (N).
- REMOVE TEMPERATURE CONTROLS.
- REMOVE AND MODIFY PIPING FOR CONFIGURATION OF NEW EQUIPMENT.
- REMOVE UN-USED PIPING BACK TO WITHIN 6" OF ACTIVE MAIN & CAP.



ROOF MECH DEMO PLAN PENTHOUSE (WEST)

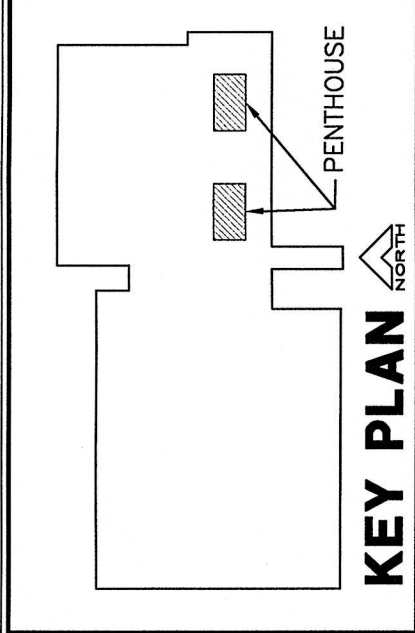
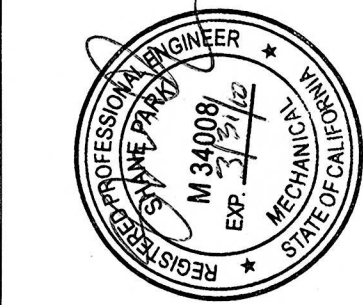
SCALE: 1/4" = 1'-0"



ROOF MECH DEMO PLAN PENTHOUSE (EAST)

SCALE: 1/4" = 1'-0"

EQUIPMENT	LOCATION AT BUILDING 650
CP-25	EAST PENTHOUSE
CP-26	EAST PENTHOUSE
CP-18	1ST FLOOR INTERSTITIAL SPACE CEILING
CP-12	1ST FLOOR MECHANICAL EQUIPMENT ROOM 1D645
CP-13	1ST FLOOR MECHANICAL EQUIPMENT ROOM 1D645
CP-14	1ST FLOOR MECHANICAL EQUIPMENT ROOM 1D645
CP-15	BASEMENT MECHANICAL EQUIPMENT ROOM
AC-9	WEST PENTHOUSE
CP-20	WEST PENTHOUSE
CP-21	WEST PENTHOUSE
CP-22	WEST PENTHOUSE
CP-23	WEST PENTHOUSE
CP-24	WEST PENTHOUSE
RA-8	WEST PENTHOUSE



K.F. DAVIS ENGINEERING, INC.  
550 LA GONDA WAY, SUITE E  
DANVILLE, CA 94526

Revised: 11/10/08

Drawing Title:

DEMOLITION - PENTHOUSE  
UNITS 9 THRU 15

Project Title:

BLDG 650  
REPLACE AIR HANDLERS  
1 THRU 4,  
7 AND 9 - 15

Date: 08/25/08



Drawn: RMK

Building Number:

MATHER VAMC  
MATHER CALIFORNIA

Project No.: 6124-07-342

DWG. OF H2.4