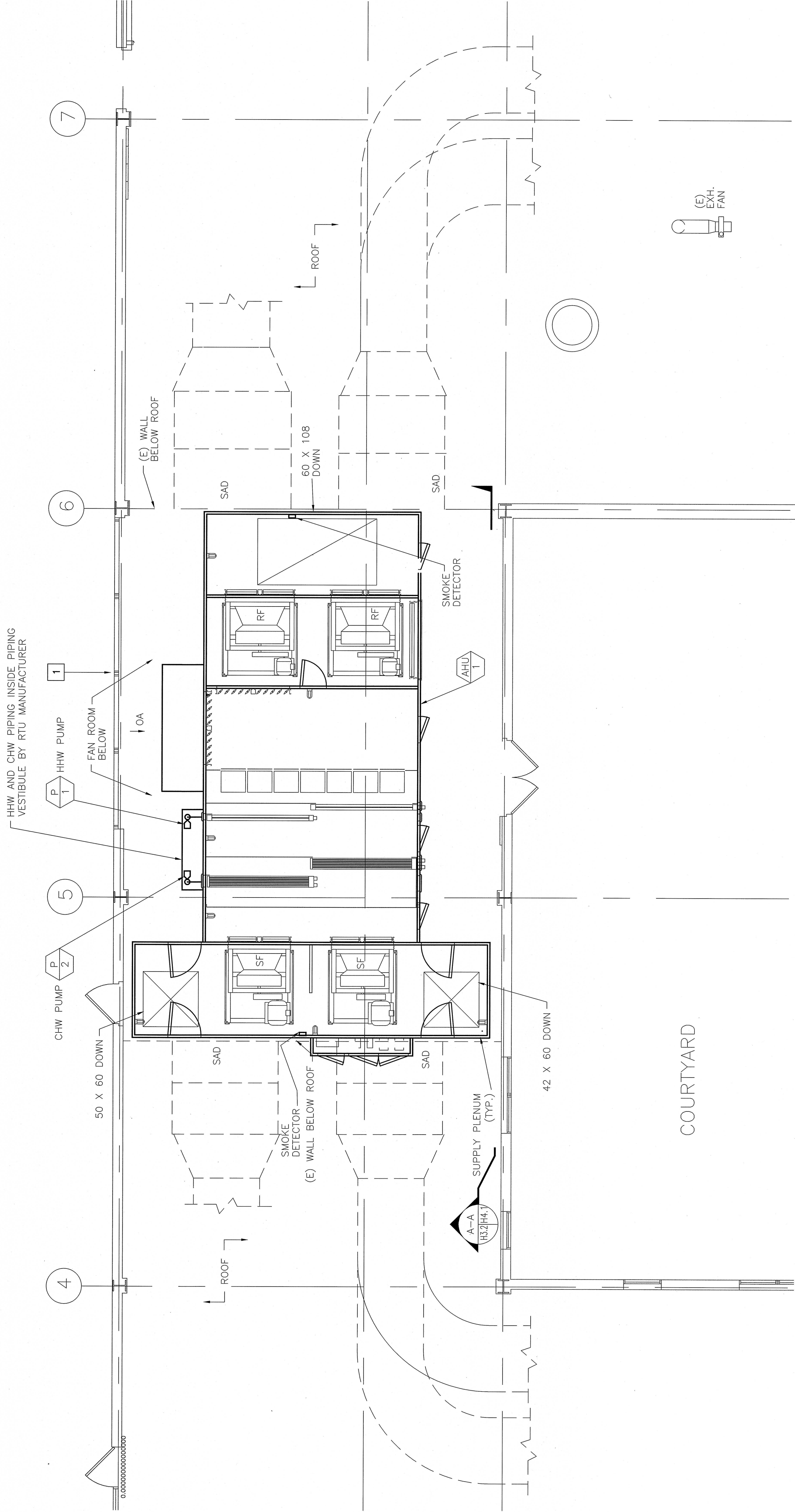


GENERAL NOTES:

1. ROOF PENETRATIONS SHALL BE WITHIN THE CURB. ENLARGE THE OPENING BY APPROX. 4" IN EACH DIRECTION AS NECESSARY TO MAKE CONNECTIONS.
2. SEAL DUCT CONNECTIONS TO RTU AIR TIGHT. PROVIDE LOW-PRESSURE-DROP LIFT-OUT SAFETY GRATING AT EACH SUPPLY AND RETURN FLOOR OPENING.
3. PROVIDE SMOKE DETECTOR FOR RTU FAN SHUTDOWN. FACTORY MOUNT A 4" X 4" X 2" JUNCTION BOX ON THE MIDDLE OF THE END WALL OF THE RTU SUPPLY AIR AND RETURN PLENUMS. EXTEND 3/4" CONDUIT TO A COMMON JUNCTION BOX IN THE VFD VESTIBULE. SMOKE DETECTOR SHALL BE FURNISHED AND INSTALLED BY THE RTU MANUFACTURER. CONTRACTOR SHALL COORDINATE WITH THE VA CONTRACTING OFFICER TO PROVIDE SMOKE DETECTORS SIMILAR TO THE SMOKE DETECTORS USED IN THE HOSPITAL. ALL REQUIRED WIRING SHALL BE FURNISHED, INSTALLED AND CONNECTED BY THE CONTRACTOR.
4. ROUTE COOLING COIL CONDENSATE DRAIN DOWN THROUGH ROOF. PROVIDE TRAP. SEE DETAIL 4/H6.1. ROUTE TRAP DISCHARGE AT FLOOR DRAIN IN MECHANICAL ROOM BELOW.
5. EXTEND CHILLED WATER AND HEATING HOT WATER PIPING INTO RTU VESTIBULE FROM MECHANICAL EQUIPMENT ROOM BELOW. SEE COIL PIPING DETAIL. PIPING VESTIBULE SHALL BE FACTORY ASSEMBLED BY RTU MANUFACTURER.
6. PATCH AND REPAIR ALL ROOFING AFFECTED BY THIS WORK. COORDINATE WITH VA PRIOR TO THIS EFFORT IN CASE EXISTING WARRANTIES ARE IN EFFECT. ALL SURFACES SHALL BE SEALED WATERTIGHT.

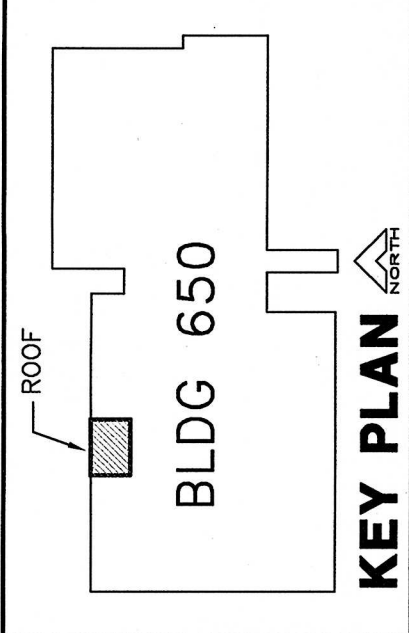
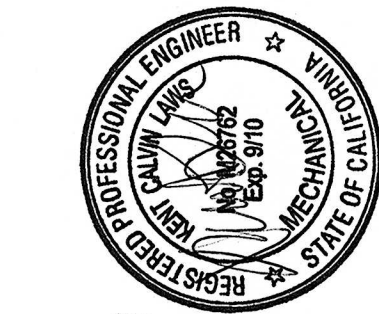
SHEET NOTES:

- 1 CONTRACTOR SHALL PATCH AND REPAIR EXTERIOR WALL TO MATCH EXISTING WHERE THE LOUVER WAS REMOVED. PRIME AND PAINT TO MATCH EXISTING.



BLDG 650 FIRST FLOOR PARTIAL ROOF PLAN (WEST)

SCALE: 1/4" = 1'-0"



K.F. DAVIS ENGINEERING, INC.
5501 RIVERVIEW BLVD., SUITE E
DANVILLE, CA 94618

Resident:
Approved:
Approved:

Drawing Title:
FIRST FLOOR PARTIAL ROOF PLAN
(WEST)
Approved: Medical Center Director
Drawn: RMK
Checked: KL

Project Title:
BLDG 650
REPLACE AIR HANDLERS
1 THRU 4,
7 AND 9 - 15
Building Number:
Location:
MATHER VAMC
MATHER CALIFORNIA

Date:
08/25/08
Project No.:
6124-07-542
Drawing No.
H3.2
Dwg. Of

