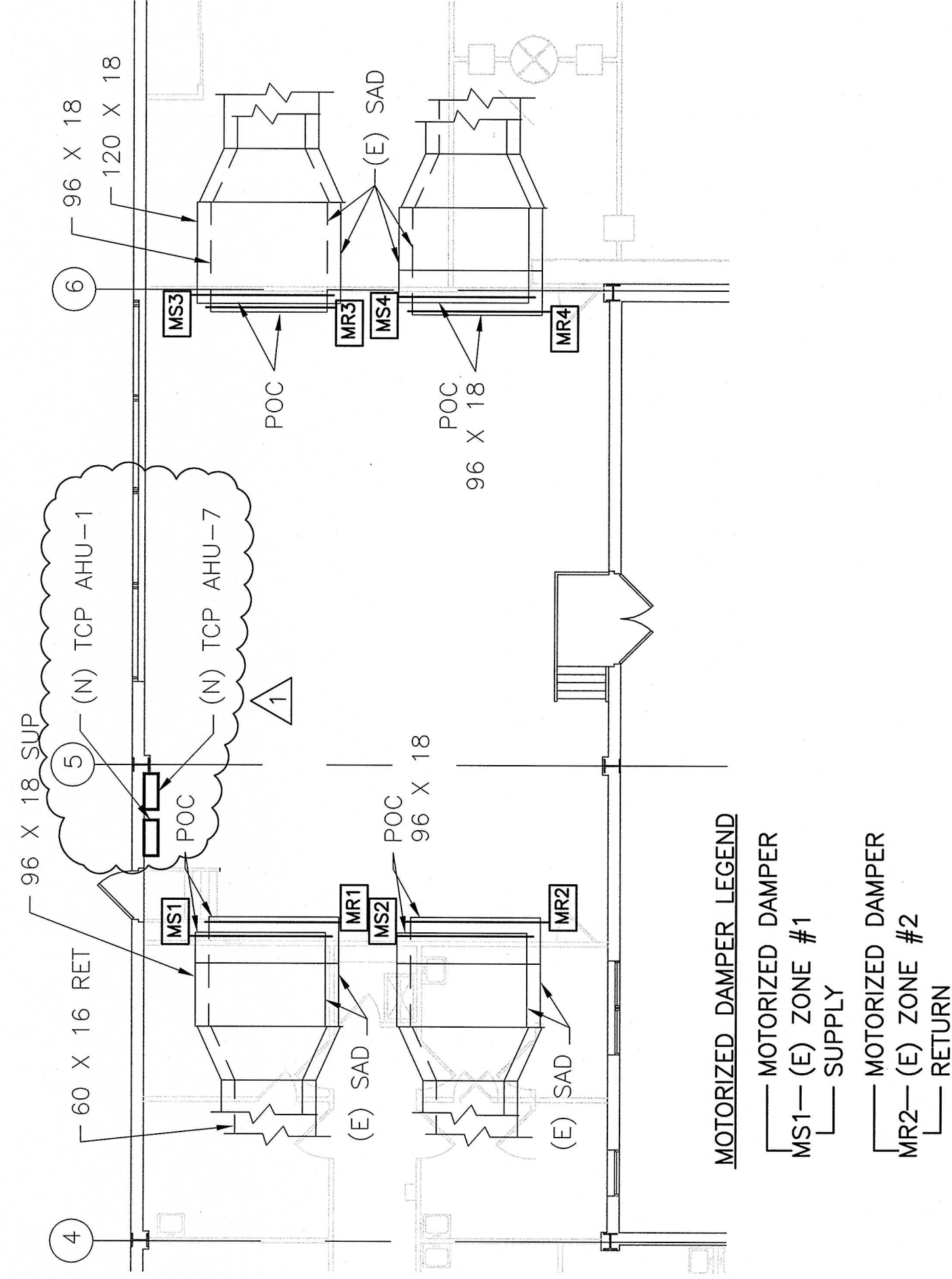


**BLDG 650 MECH ROOM PIPING PLAN**

SCALE: 1/8" = 1'-0"





## CONTROL DAMPER & DUCT CONNECTION POINT PLAN

SCALE: 1/8" = 1'-0"


**MECHANICAL ROOM PIPING PLAN NOTES:**

- ① ROUTE CHILLED WATER AND HEATING HOT WATER ACROSS ROOF TO MECHANICAL ROOM AND EXTEND THROUGH ROOF TO NEW ROOF TOP UNIT COORDINATE EXACT LOCATION OF ROOF PENETRATIONS WITH ROOF TOP UNIT MANUFACTURER
- ② CONNECT TO 4" CHWS & R PIPING IN (E) MECHANICAL ROOM. EXTEND (N) PIPING UP THRU ROOF.
- ③ CONNECT TO (E) 3" HHWS AND 4" HHWR PIPING AND EXTEND (N) PIPING UP THRU ROOF.


	<b>Department of Veterans Affairs</b>	
	Date: <b>08/25/08</b>	Project Title: <b>BLDG 650 REPLACE AIR HANDLERS 1 THRU 4, 7 AND 9 - 15</b>
	Project No.: <b>6124-07-342</b>	Building Number:
	DRAWING No: <b>H4.2</b>	Location: <b>MATHER YAMC MATHER CALIFORNIA</b>
Revision: <b>△ DATED 11/10/08</b>	Drawing Title: <b>MECHANICAL ROOM PIPING AND CONTROL DAMPER PLAN</b>	Drawn: <b>RMK</b>
Approved:	Approved: Medical Center Director	Checked: <b>KL</b>
Approved:	Approved: Chief Engineering Service	Approved:



**BLDG 650**  
**KEY PLAN** AS SHOWN



**DATE: 11/10/08**  
**EXP: 12/31/10**



**DAVIS ENGINEERING INC.**  
**550 COMPTON BLVD. SUITE E.**  
**DANVILLE, CA 94526**