

A

B

C

D

E

F

three eighths = one foot

one and one half inches = one foot

one inch = one foot

three quarters inch = one foot

one half inch = one foot

three eighths inch = one foot

one quarter inch = one foot

one eighth inch = one foot



A

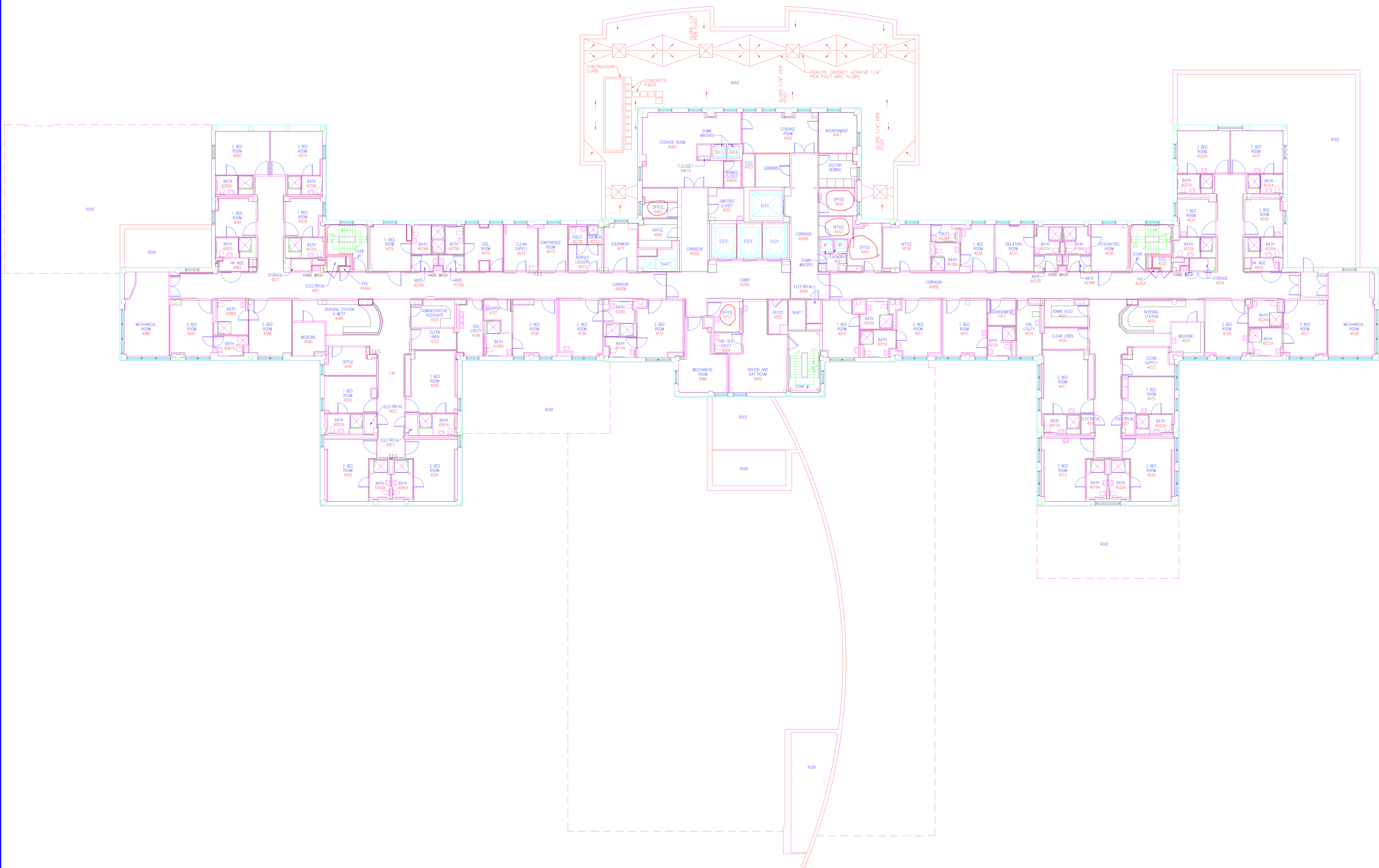
B

C

D

E

F



			<div><div><div>i</div></div><div>Indus Systems, Inc. 2352, Main Street, Concord MA 01742 Tel: 978-461-0555 www.indus-systems.com</div></div>	Drawing Title FOURTH FLOOR PLAN ARCHITECTURAL		Project Title AS-BUILT Drawings		Date 08-19-2013	<div><div><div></div></div><div>WILMINGTON</div><div><div></div></div></div> <div>VAMC, WILMINGTON</div>	Department of Veterans Affairs  VA	
				Site:		Building Number 01	Checked	Drawn			Project No.
				Approved:		Location VAMC WILMINGTON DELAWARE		Drawing No. 460-1-4-AR			
Revisions	Date										