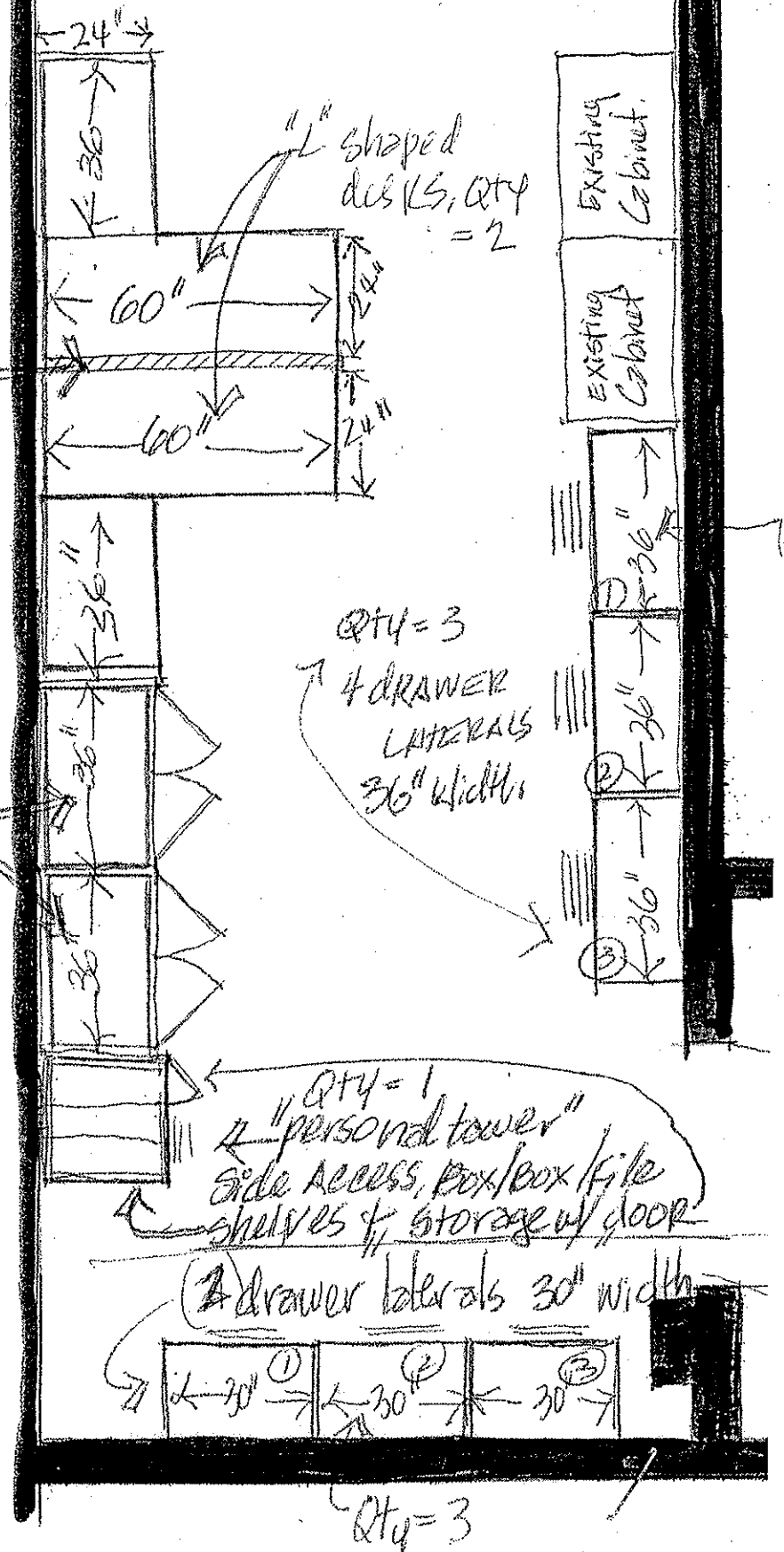


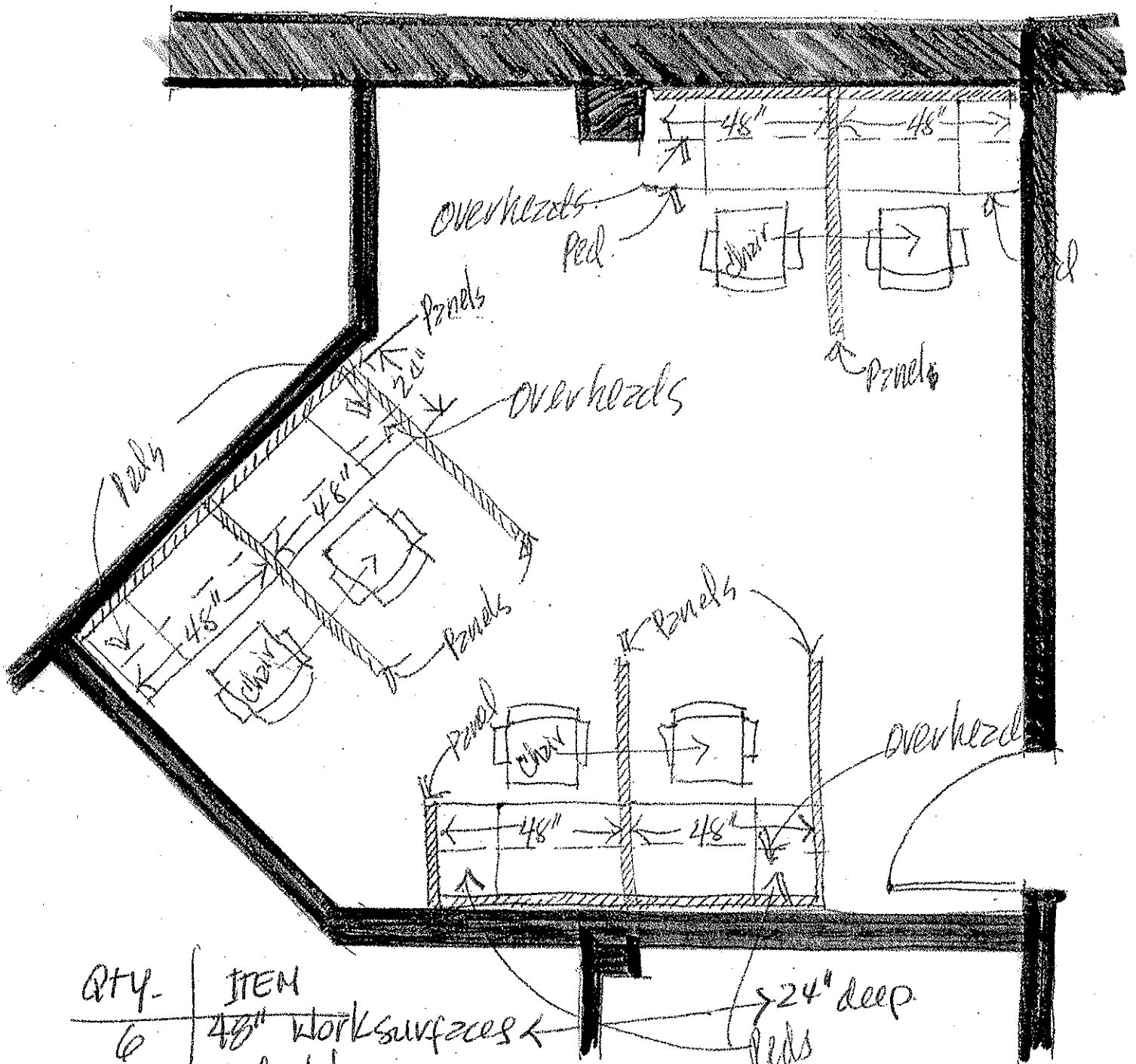
60" width
@ a height of 65" panel.

Acrylic vision panel
for top (optional)

(2) door
STORAGE Cabinets

Qty = 2
36" width
24" depth
72" Height.



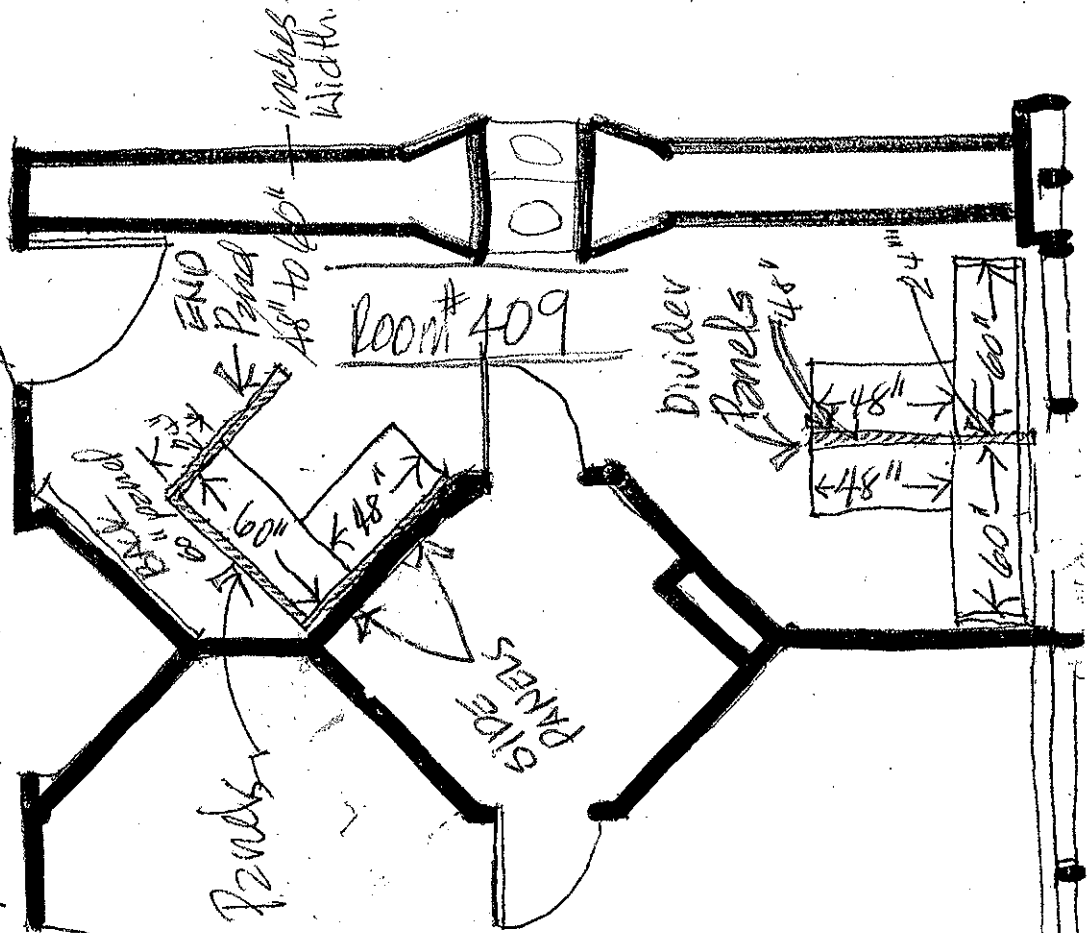


Qty.	ITEM
6	48" Work surfaces
6	Pedestals
6	overheads

Qty.
 5-60" Width (Dividers & ends)
 6-48" Width (backs)
 1-24" Width (END)

QTY - ITEM
 FOR SIDES → 4-48" Width Panel
 & DIVIDERS → 4-24"
 2-60" (BACK)
 2-48" to 60" (END)

FOR PANEL AT 65" high panels w/ acrylic tops optional



QTY - ITEM
 6-60" length x 24" width desk
 6-48" length x 24" width return

