

SPECIFICATIONS

Background

The Eastern Oklahoma Veterans Health Care System (Jack C. Montgomery VAMC, Muskogee) is in need of replacing two (2) medium steam sterilizers and loading carts. The current sterilizers were purchased in 2002 and have a replacement date of 2020. Replacement is being requested at this time for several reasons. 1) the current sterilizers have doors on the “dirty” and “clean sides of sterile processing. This is old technology and it is best practice to have an opening only on the clean side. 2) We are in need of sterilizers that will offer more sterilization cycles than our current ones offer. 3) The control panel has had several repairs and we have been told that when these “go out” completely they will not be able to be repaired.

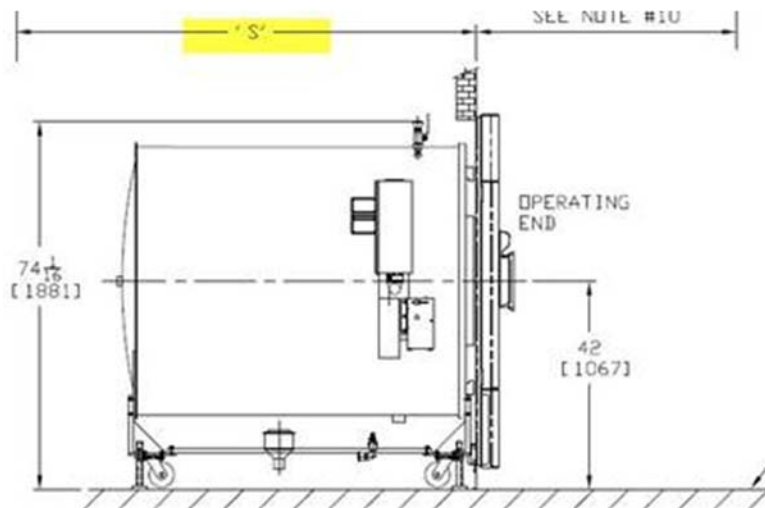
Functional/Performance/Specification Description

We are requesting 2 steam sterilizers, three loading carts and transfer carriages that can be configured to fit into the existing footprint of the current sterilizers. Listed below are the minimum requirements needed:

- 1) Steam sterilizer with a 60” high capacity chamber.
- 2) 480 Volt
- 3) Must be AAMI ST-8:2008 compliant
- 4) Facility Steam will be used
- 5) The chamber must be constructed of solid 316L stainless steel or higher grade.
- 6) The chamber must have at least a 15 year warranty.
- 7) The pressure chamber should have a full jacket design.
- 8) Gaskets should be should not require lubrication.
- 9) Must have documented validation to sterilize a minimum of 15, 25 pound instrument sets.
- 10) The sterilizers must have programable control panels that will store a minimum of 12 custom cycles.
- 11) The sterilizers must have right hand door hinges.
- 12) The doors must be easy to open with one hand.
- 13) Sterilizers must have ink on paper printout
- 14) Chamber length 60”
- 15) Chamber width 26”

- 16) Chamber Height 37.5"
- 17) Two loading carts and transfer carriages must specifically be designed to fit the unique sterilizers
- 18) In line steam filter assembly for each unit
- 19) Replacement of modular stainless steel wall on the decontamination side of sterile processing.

Applicable Drawings:



26 x 37.5 x 60"

Delivery/performance information, date item(s) required

Required date of delivery 60 days after award of contract.

Additional Requirement

This will include removal and disposal of the two current steam sterilizers. Installation, set-up and training all necessary labor and materials required to uncrate, set-in-place and assemble will be included. Replace modular wall behind the existing sterilizers. The change from double door to single door sterilizers requires removing the existing walls. Install a new stainless steel modular wall to provide clearance between back of the sterilizers and the decontamination area. This work may occur outside normal working hours; weekend, nights or holiday hours may be required to mitigate impact on patient care. The vendor will include with its Installation services an operational checkout test, any necessary adjustments and a demonstration of the equipment for appropriate facility personnel.