

VETERANS ADMINISTRATION

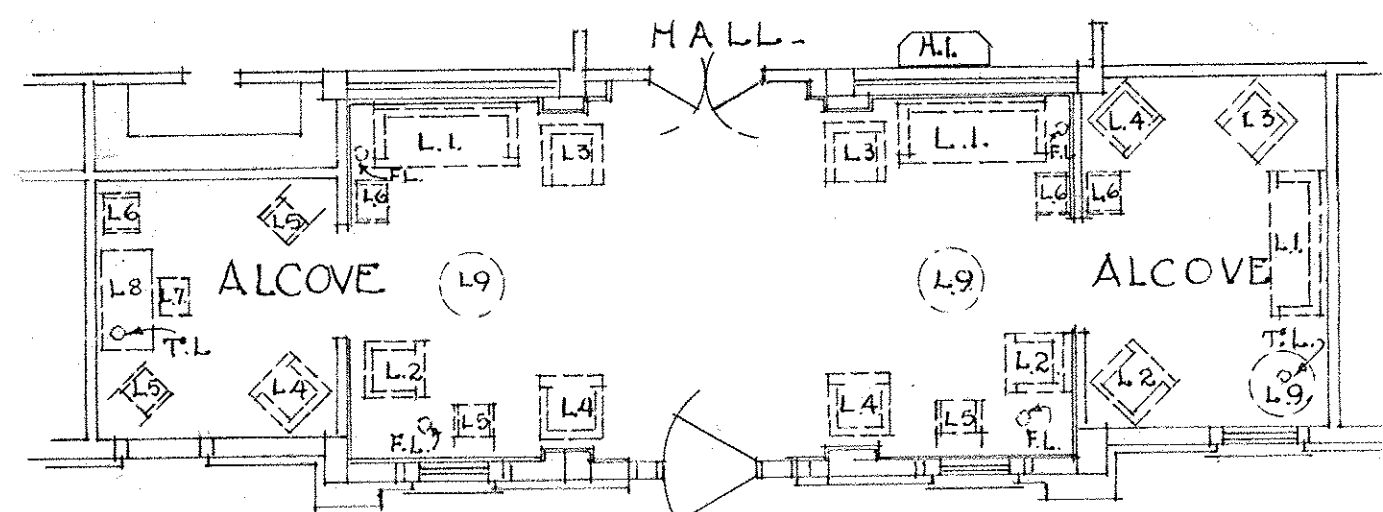
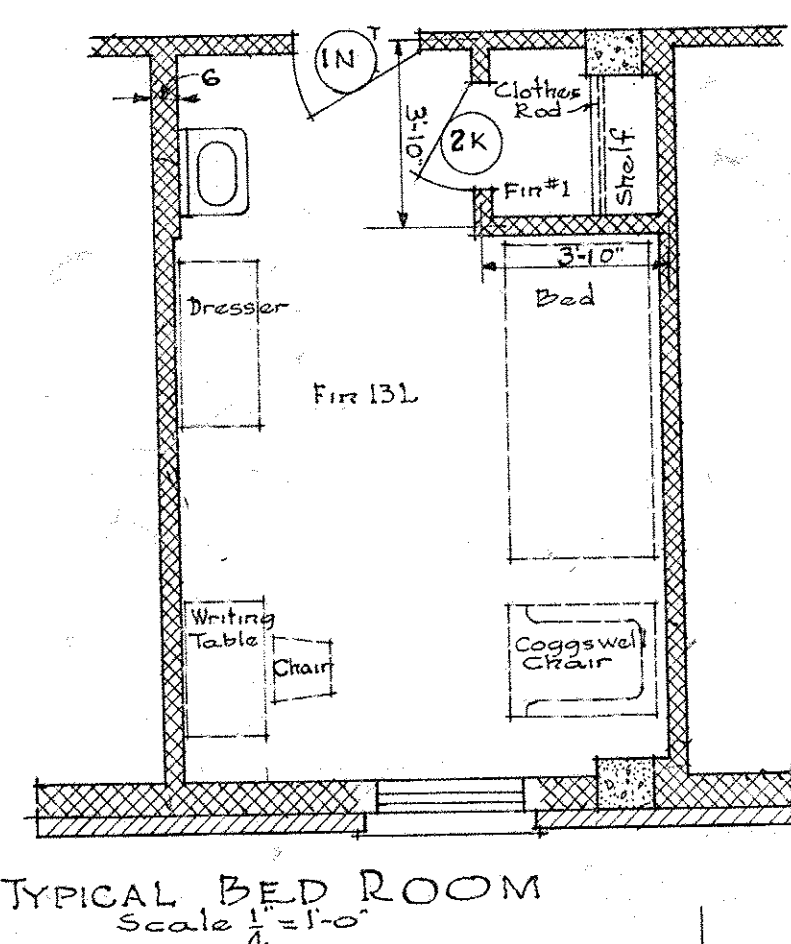
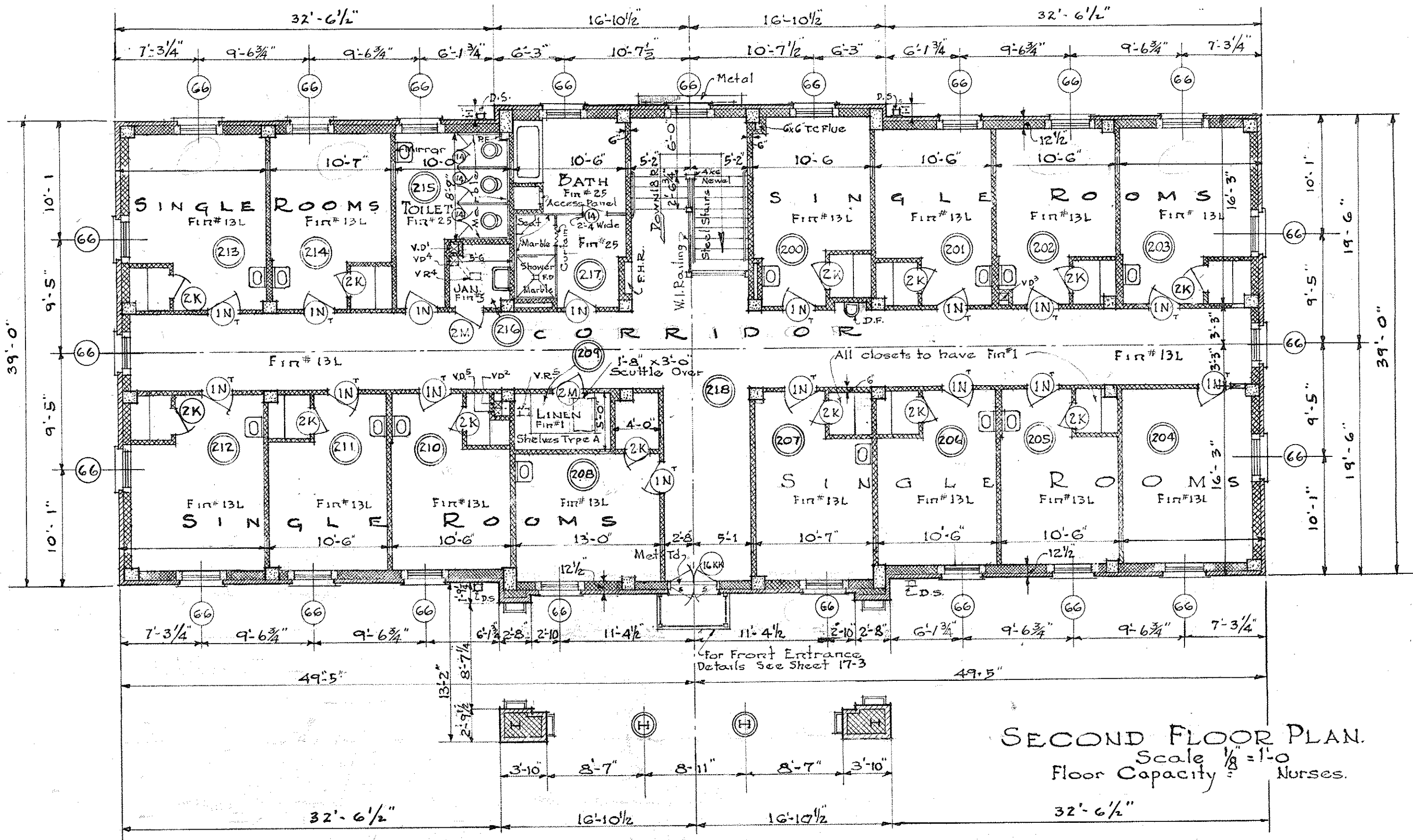
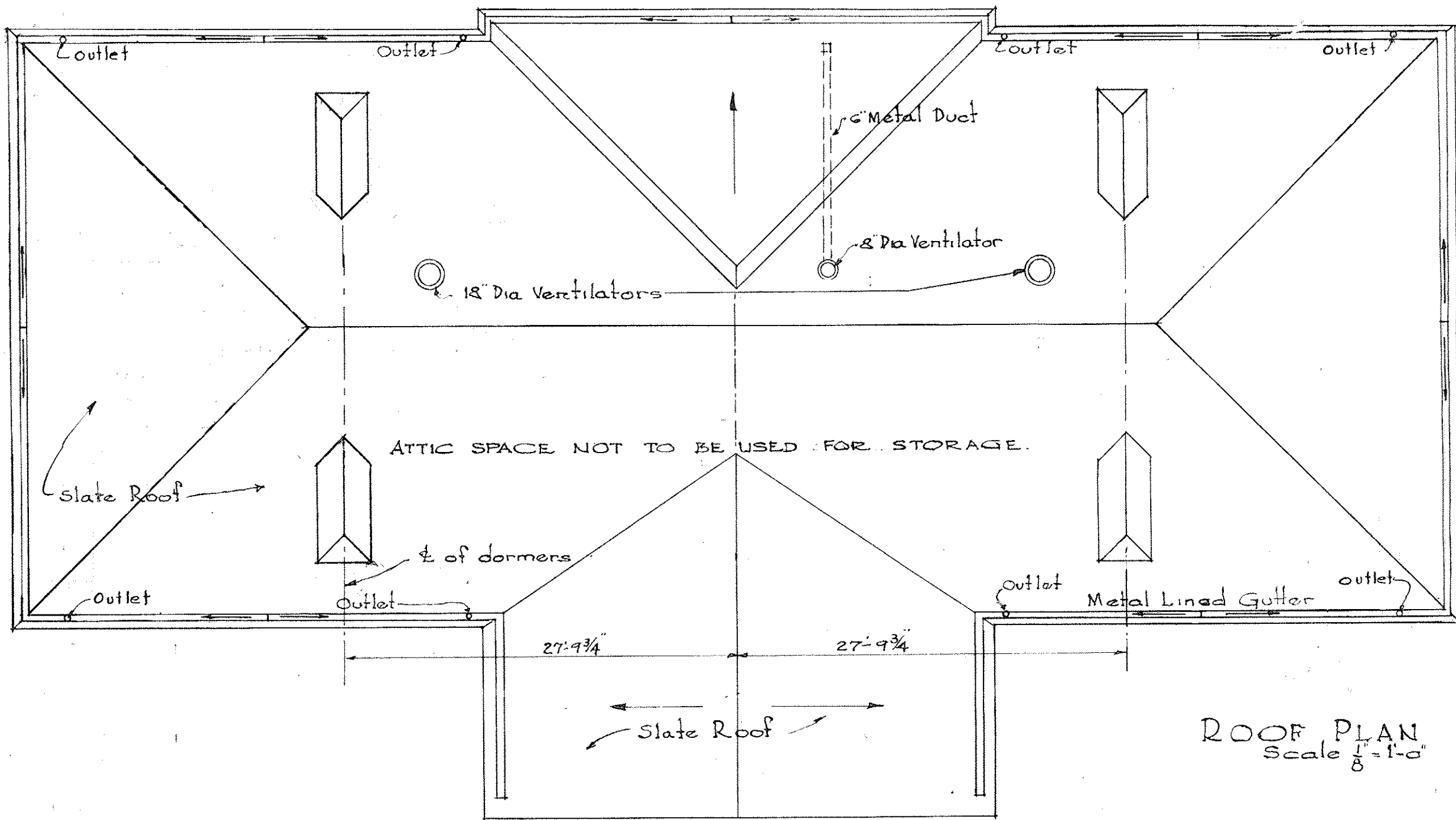
WASHINGTON, D. C.

APPROVED: *Shirley C. Alvord*
ADMINISTRATOR

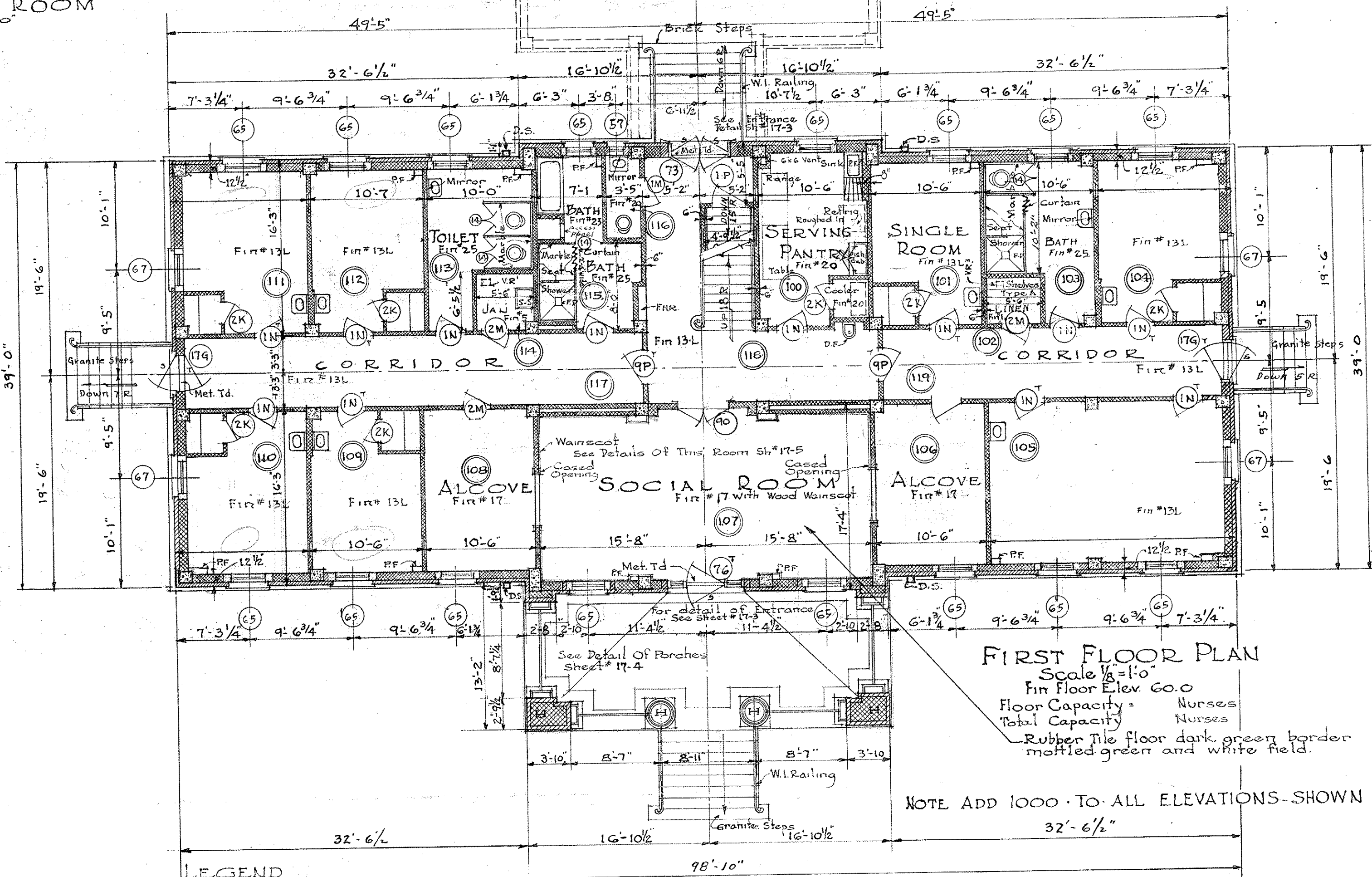
Benjamin B. Davis
ASSISTANT ADMINISTRATOR

John J. Davis
DIRECTOR OF CONSTRUCTION

John J. Davis
CHIEF, TECHNICAL DIVISION



- LEGEND**
- L.1 Davenport
 - L.2 Wing Chair
 - L.3 Arm Chair
 - L.4 Occasional Chair
 - L.5 Windsor Rocker (Arms)
 - L.6 Windsor Chair (Straight - No Arms)
 - L.7 Windsor Chair (Straight - No Arms)
 - L.8 Desk - Table
 - L.9 Table Lamp
 - L.10 Console Table & Mirror
 - L.11 Occasional Table



- LEGEND**
- CONCRETE
 - STONE
 - BRICK
 - HOLLOW BUILDING TILE
 - METAL FLASHING
 - D.F. DRINKING FOUNTAIN
 - D.S. DOWN SPOUT
 - F.H.R. FIRE HOSE RECESS
 - S.S. SLOP SINK
 - V.R. VENT REGISTER
 - V.D. VENT DUCT
 - F.D. FLOOR DRAIN
 - S. SCREEN DOOR
 - M. MARBLE
 - D.S.P. DOWN SPOUT PROTECTOR
 - P.F. PIPE FURRING
 - M.T.D. METAL THRESHOLD

GENERAL NOTES

All partitions shall be 4 building tile except where otherwise noted. Partitions shall line up with faces of columns in all cases. Partitions in corridors shall line up with faces of largest columns. Dimensions for partitions are taken to center line of partitions and to outside face of exterior walls.

Ceilings in all finished rooms shall be suspended to a sufficient depth to cover all pipes except in basement. Furr around all ducts, etc. at ceiling and all vertical pipes in finished rooms including vent ducts.

All interior door and borrowed light frames shall be metal unless otherwise noted. Provide 8x8 metal vent duct for 8x10 vent registers. Run ducts as shown on plans and connect to chimney in attic.

Soffits of all stairs shall be plastered.

For details of showers see sheet #53.

For detail of leader head see sheet #52.

For stair details see sheet #51.

For details of linen closet shelving see sheet #52.

For detail of kitchen cabinet type's see sheet #52.

All Bed Room Closets shall have Finish #1.

AS BUILT

NURSES QUARTERS BLDG. NO. 17
VETERANS ADMINISTRATION FACILITY
ROANOKE, VA.

REVISIONS

DATE

BY

17-1

17-1

17-1

17-1

17-1

RETURN TRACINGS TO PLAN FILES

Drawn: Johnson	REVISIONS	NUMBER
Traced: Johnson	DATE: 17-1-52	
Set: Cif.	BY: J.M. BULL, R.D.B.	
Date: Nov 9, 1953		
Subdivision Chief: <i>John J. Davis</i>		
Pos. N.E.P.V.A. 18		