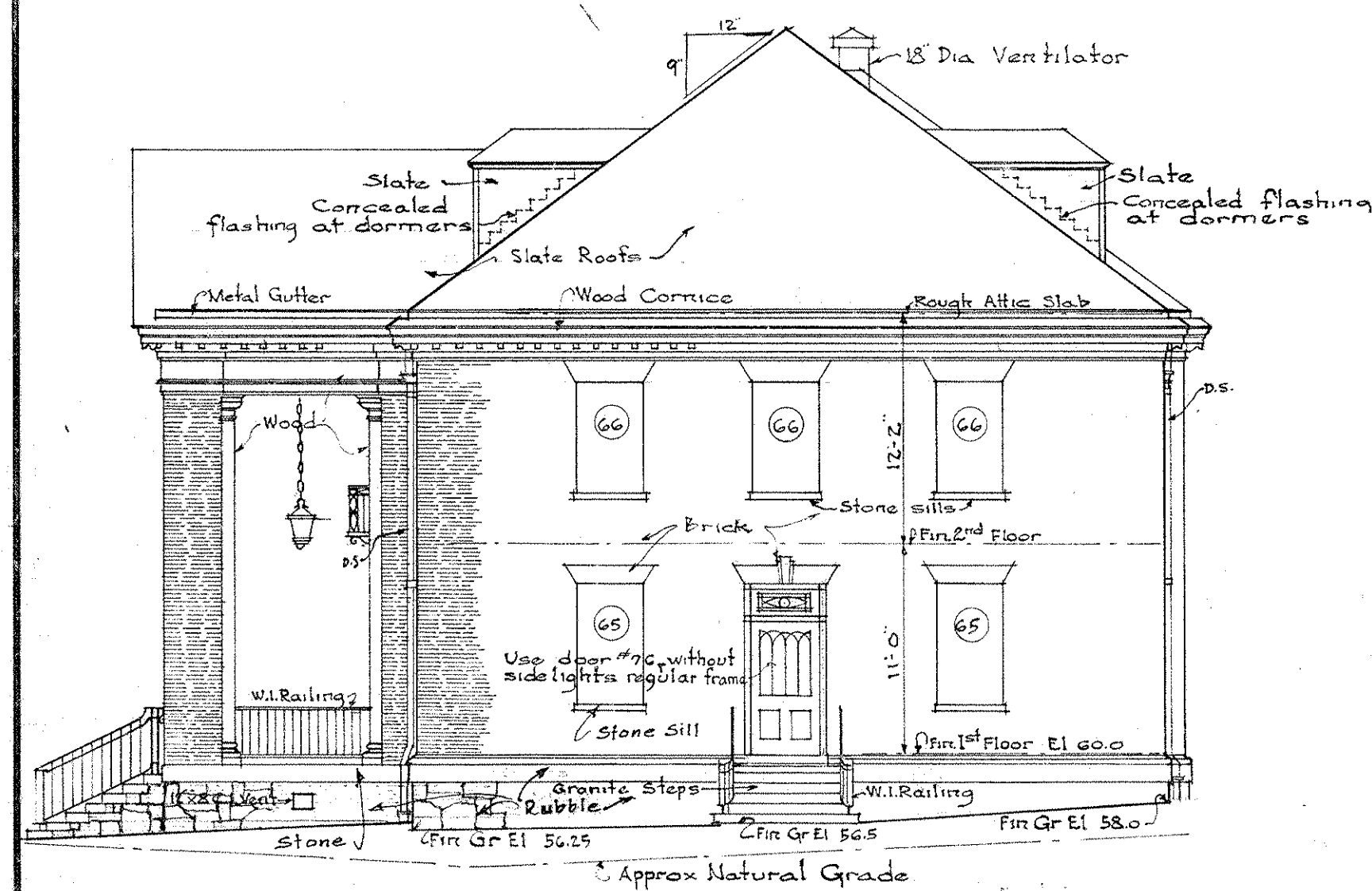
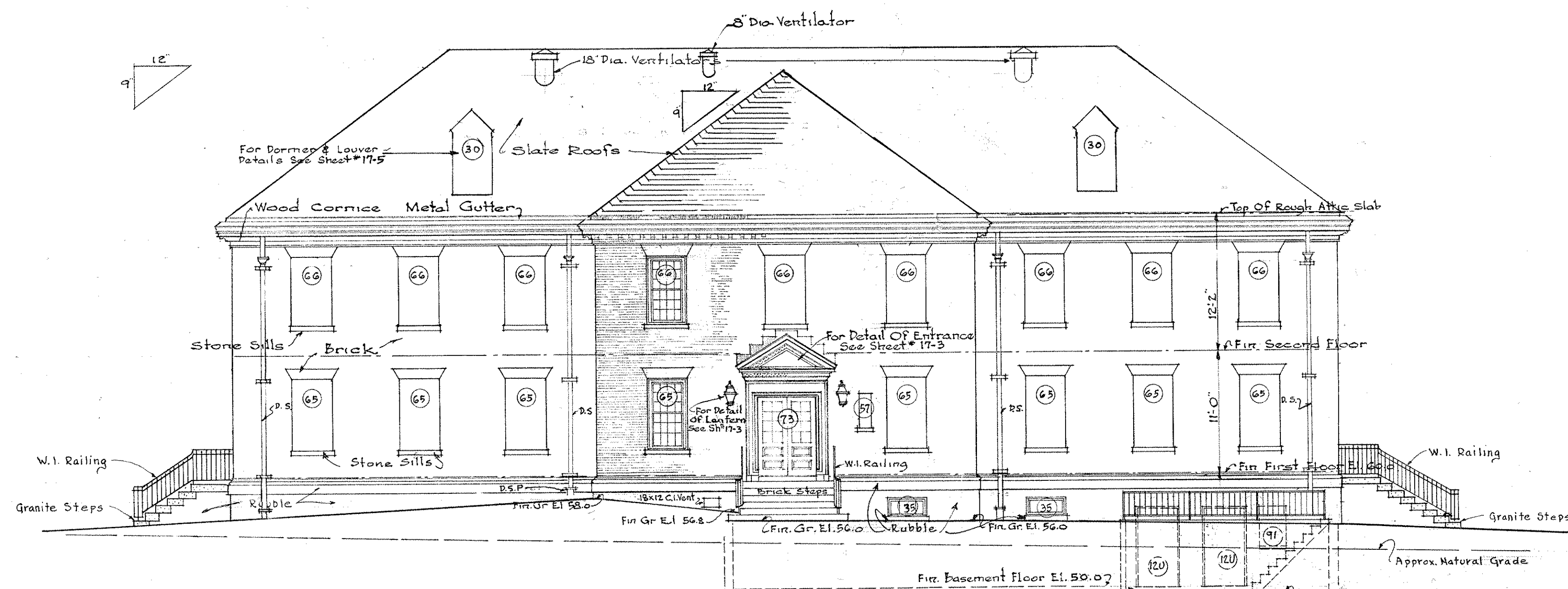


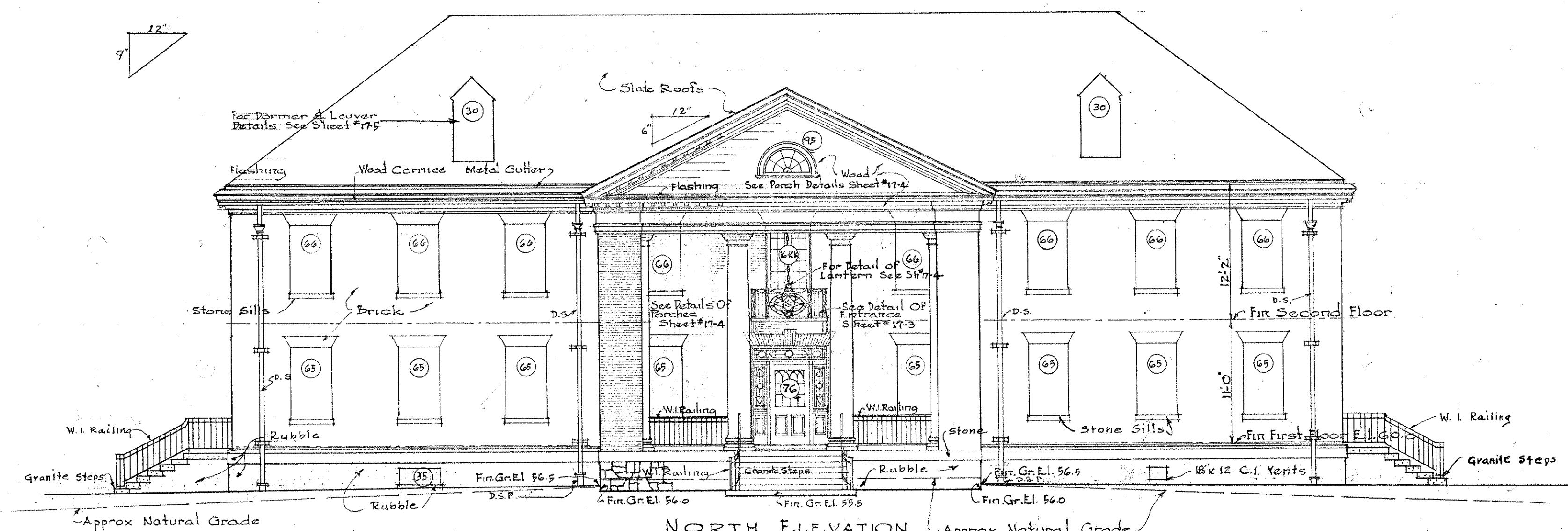
EAST ELEVATION
Scale $\frac{1}{8}'' = 1'-0''$



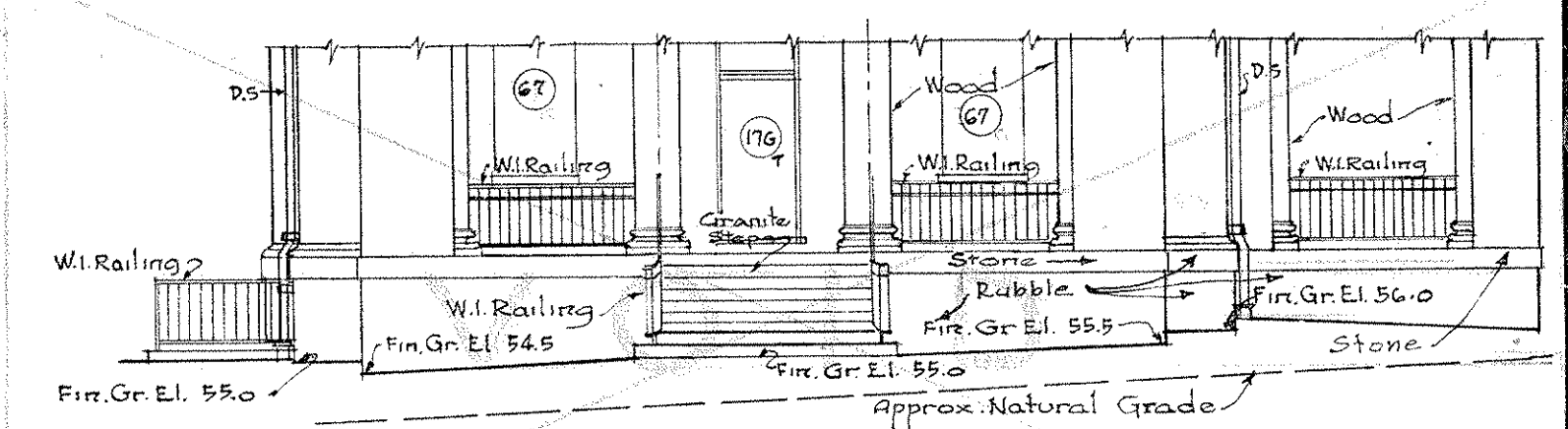
WEST ELEVATION
Scale $\frac{1}{8}'' = 1'-0''$



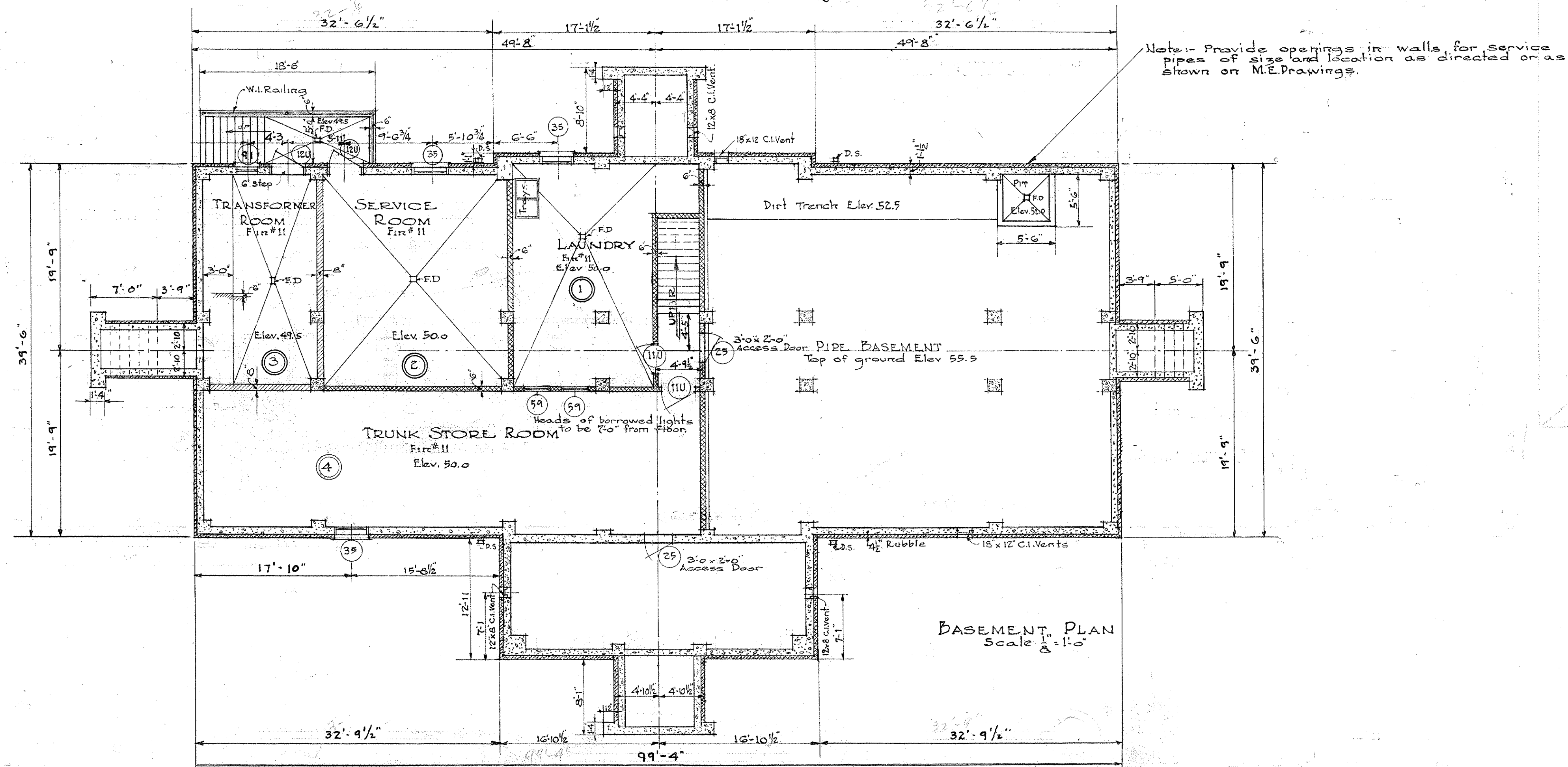
SOUTH ELEVATION
Scale $\frac{1}{8}'' = 1'-0''$



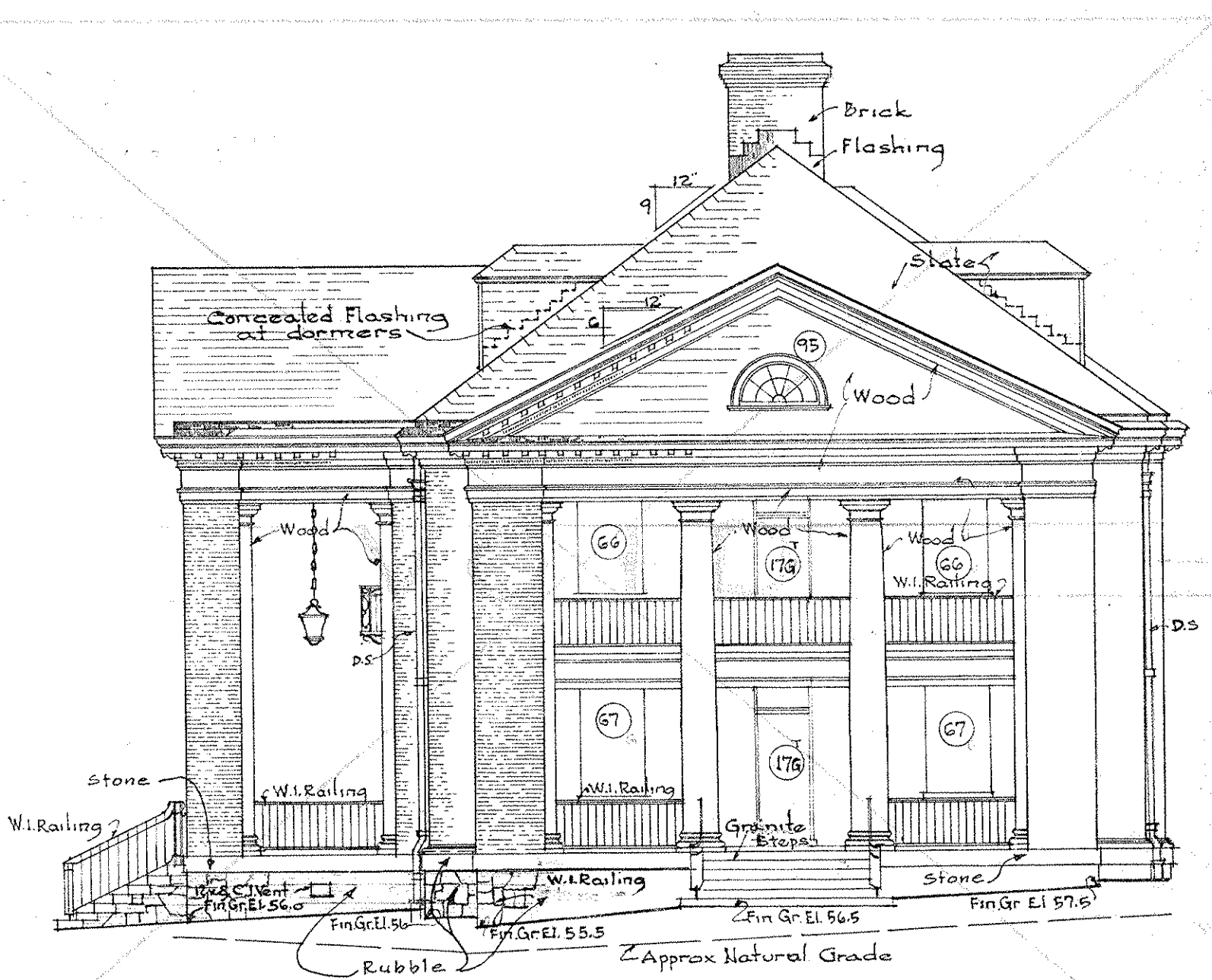
NORTH ELEVATION
Scale $\frac{1}{8}'' = 1'-0''$



LOWER PORTION
EAST ELEVATION.
Scale $\frac{1}{8}'' = 1'-0''$



BASEMENT PLAN
Scale $\frac{1}{8}'' = 1'-0''$



WEST ELEVATION
Scale $\frac{1}{8}'' = 1'-0''$

ADD 1000 TO ALL ELEVATIONS SHOWN.

AS BUILT

VETERANS ADMINISTRATION
WASHINGTON, D. C.

APPROVED: *Frank D. Hines*
ADMINISTRATOR
George B. Gains
ASSISTANT ADMINISTRATOR
J. H. Hines
DIRECTOR OF CONSTRUCTION
J. H. Hines
CHIEF, TECHNICAL DIVISION

NURSES QUARTERS BLDG. NO. 17 VETERANS ADMINISTRATION FACILITY ROANOKE, VA.		
Drawn: Johnson	REVISIONS JAN. 17, 1952	NUMBER 17-2
Traced: Johnson	6/9/56 AS BUILT-R.B.R.	
Sect. Chf. <i>J. H. Hines</i>		
Date: Nov. 9, 1953		
Sub-Division Chief <i>J. H. Hines</i>		
Proj. No. F.V.A. 18		

RETURN TRACINGS TO PLAN FILES

FOLDER NO. 3