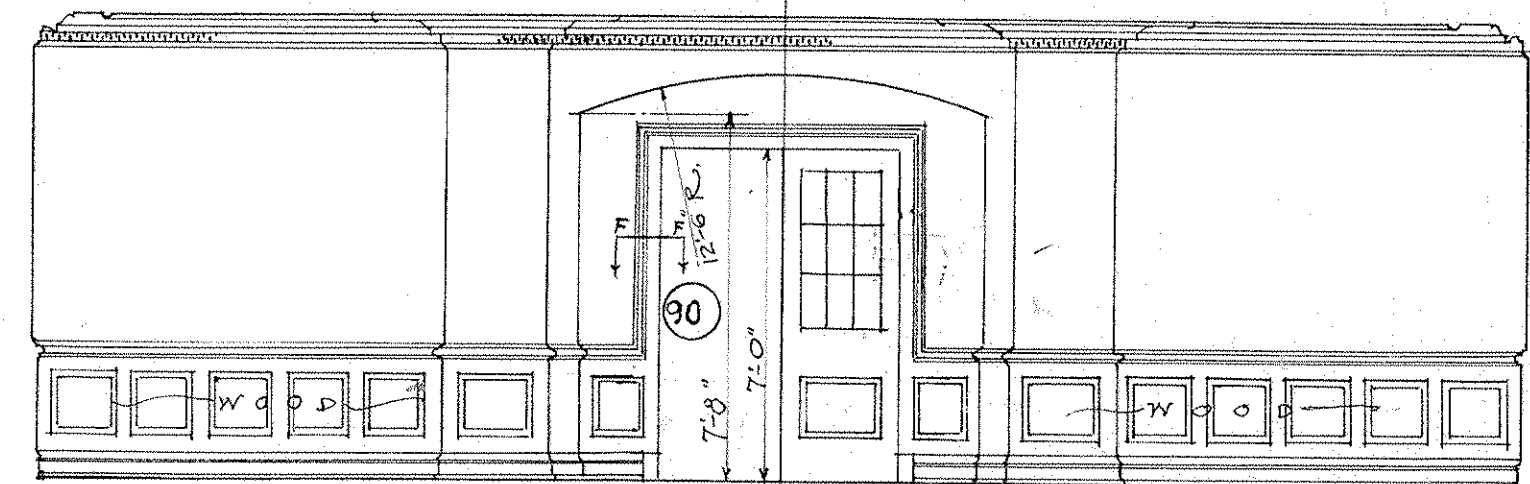
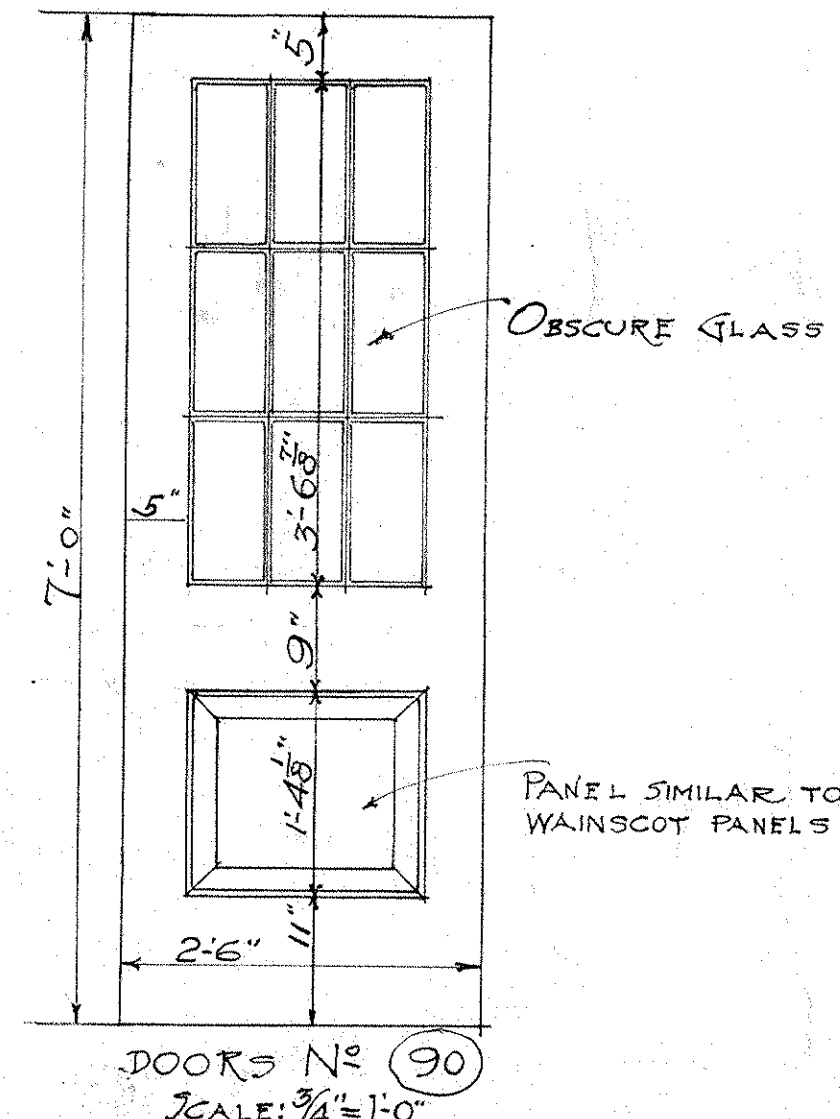


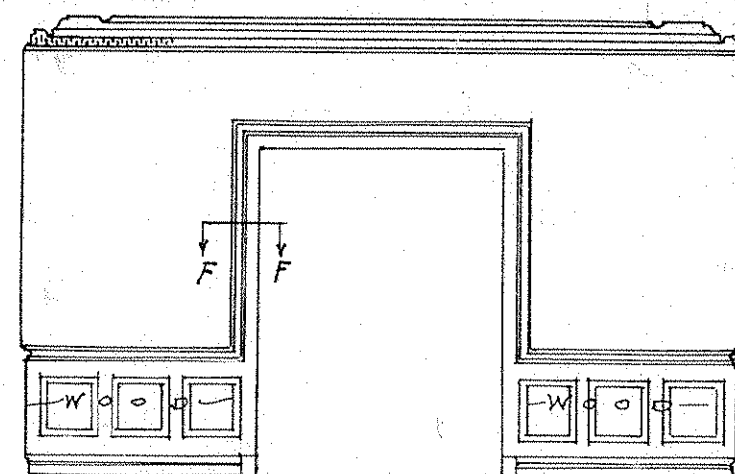
ELEVATION OF NORTH WALL  
Scale 1/4" = 1'-0"



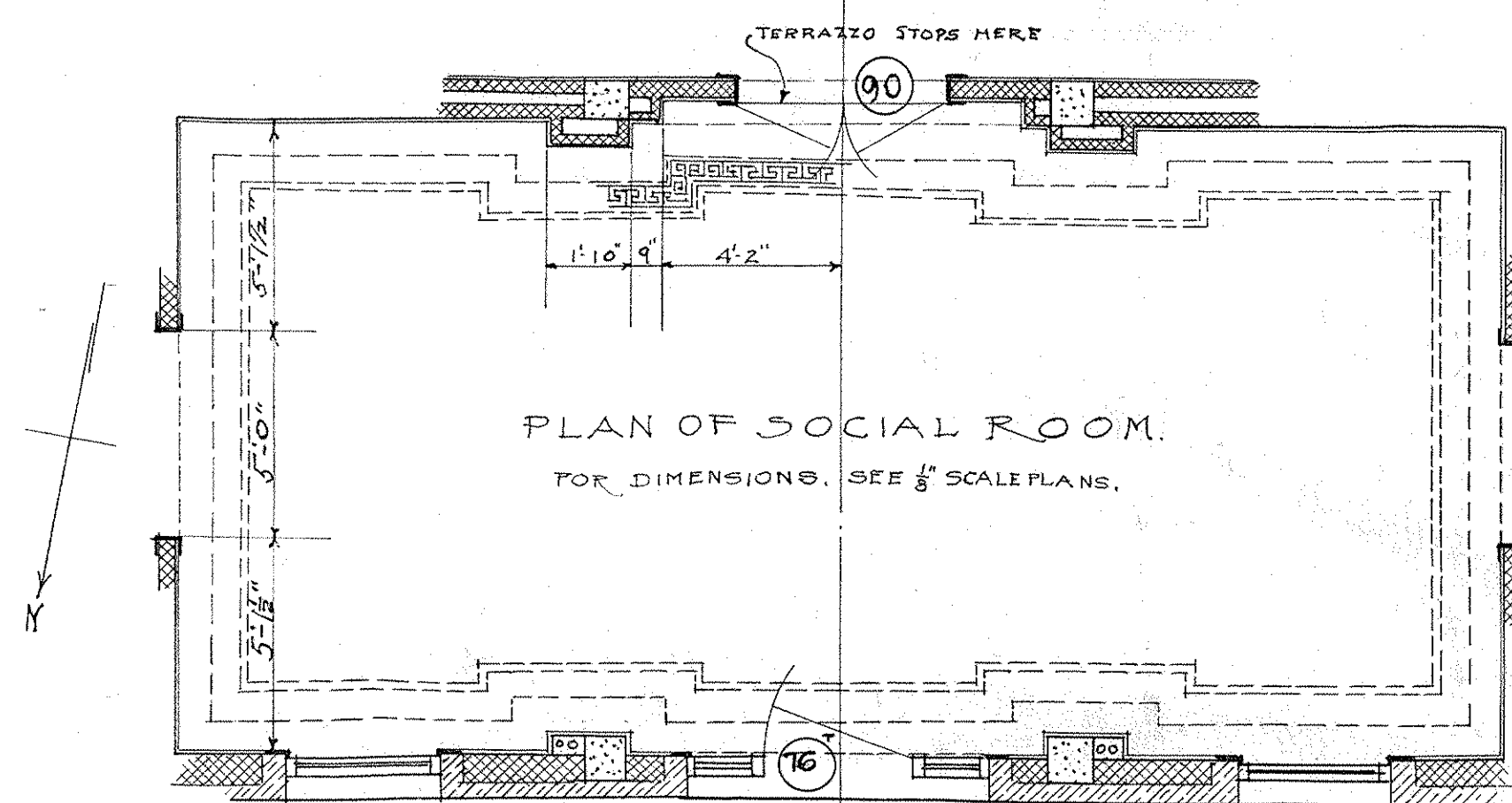
ELEVATION OF SOUTH WALL  
Scale 1/4" = 1'-0"



DOOR No. 90  
Scale 3/4" = 1'-0"

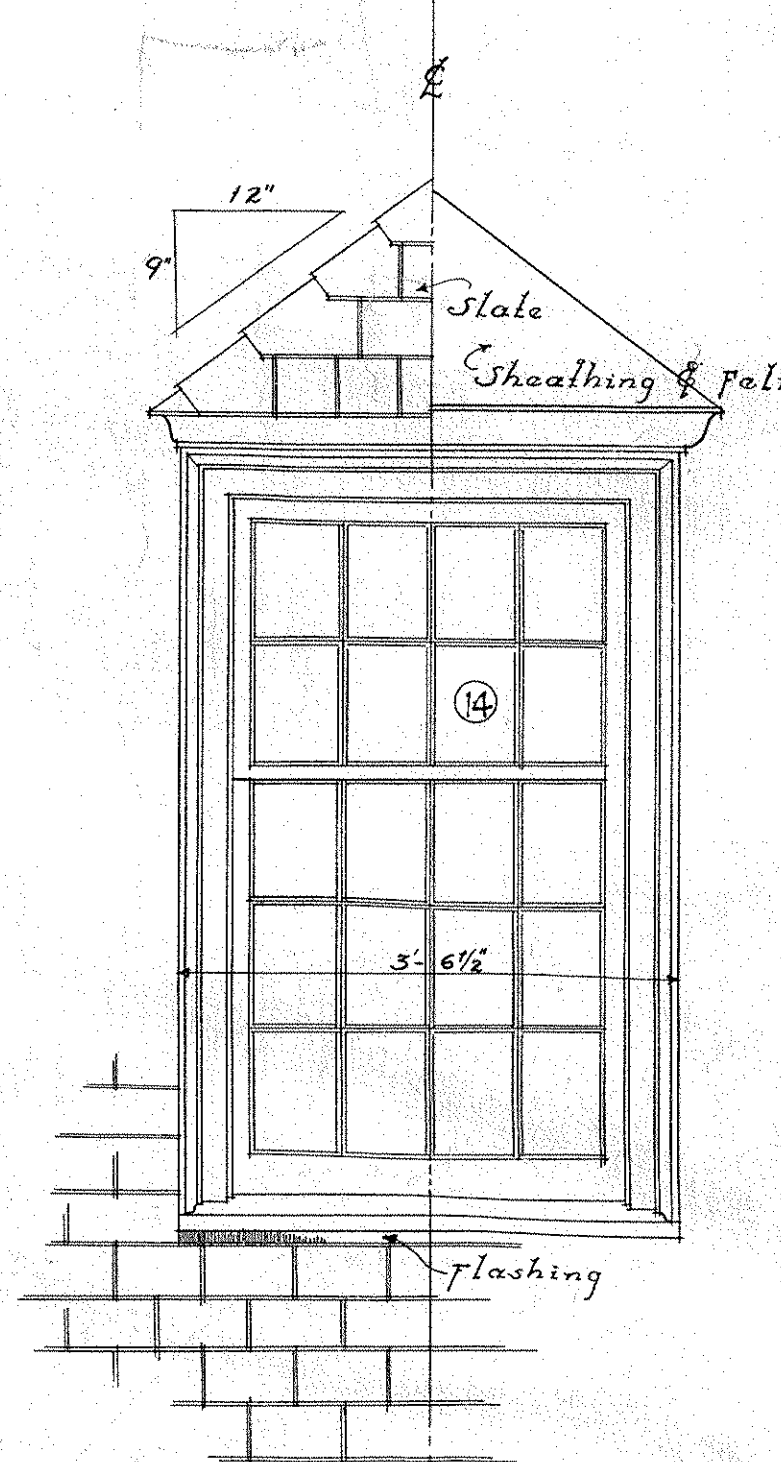


EAST & WEST WALLS  
Scale 1/4" = 1'-0"

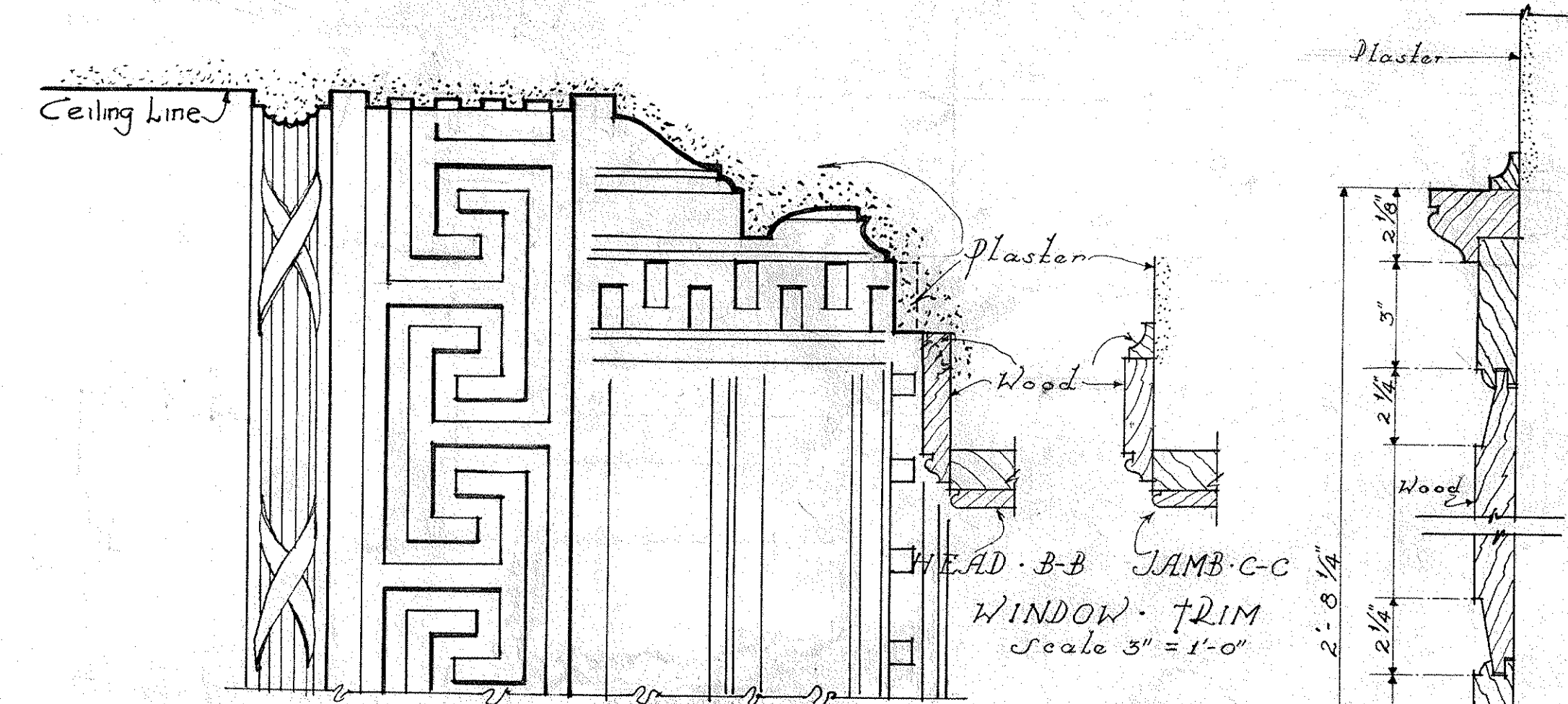


PLAN OF SOCIAL ROOM  
FOR DIMENSIONS, SEE 1/8" SCALE PLANS.

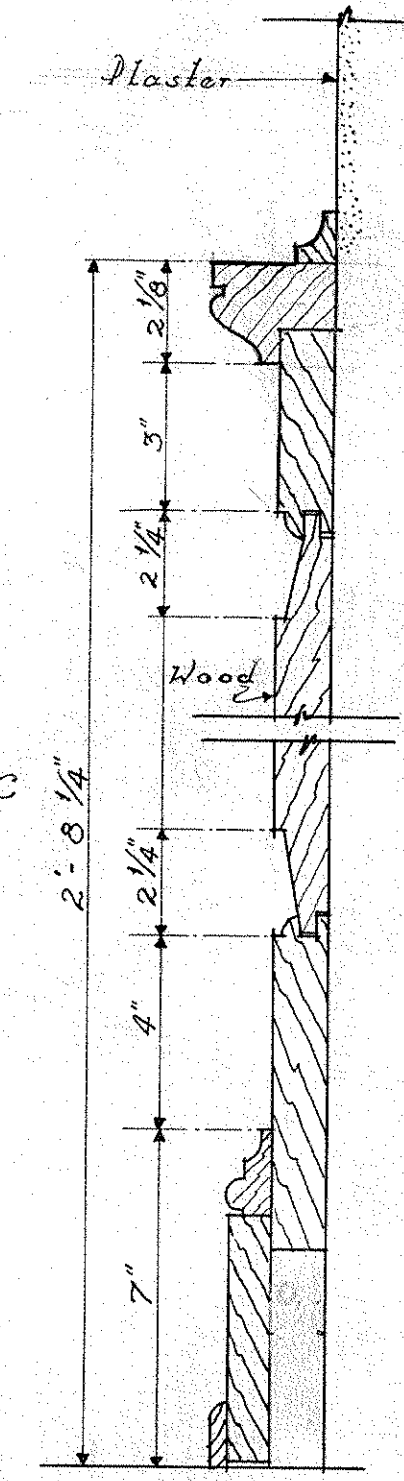
PLAN, Scale: 1/4" = 1'-0"



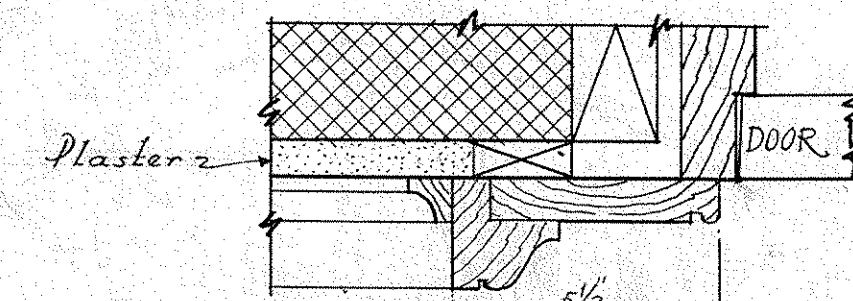
ELEVATION



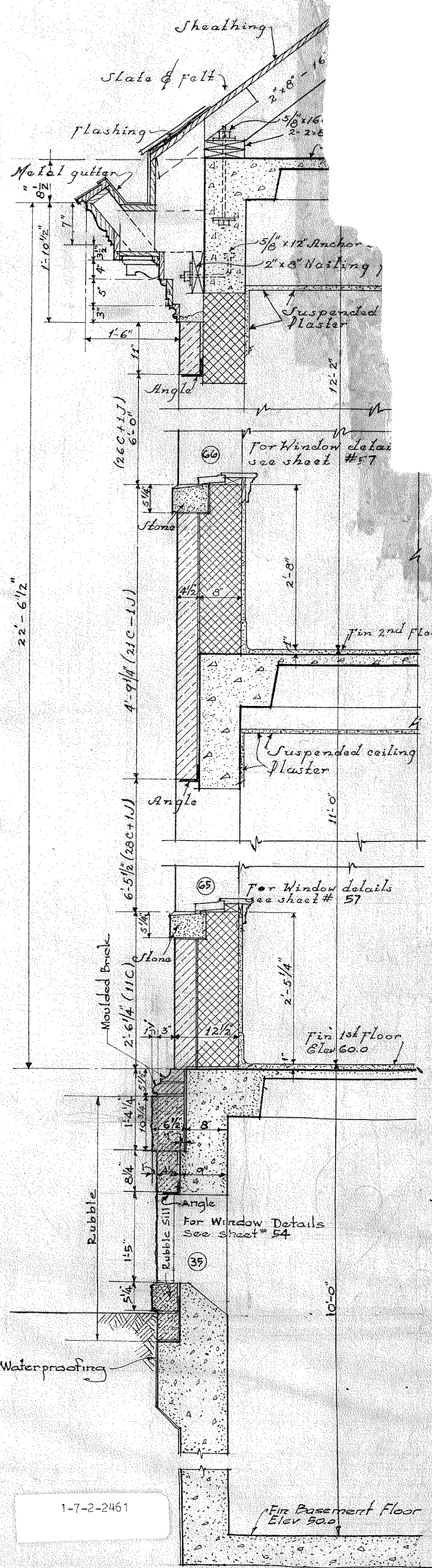
DETAIL, PLASTER CORNICE, SECTION: B-B



SECTION E-E  
Scale 3/4" = 1'-0"



SECTION A-T, F-T  
Scale 3/4" = 1'-0"



WALL SECTION  
Scale 3/4" = 1'-0"

Note: For legend of materials and general notes see sheet 17-1

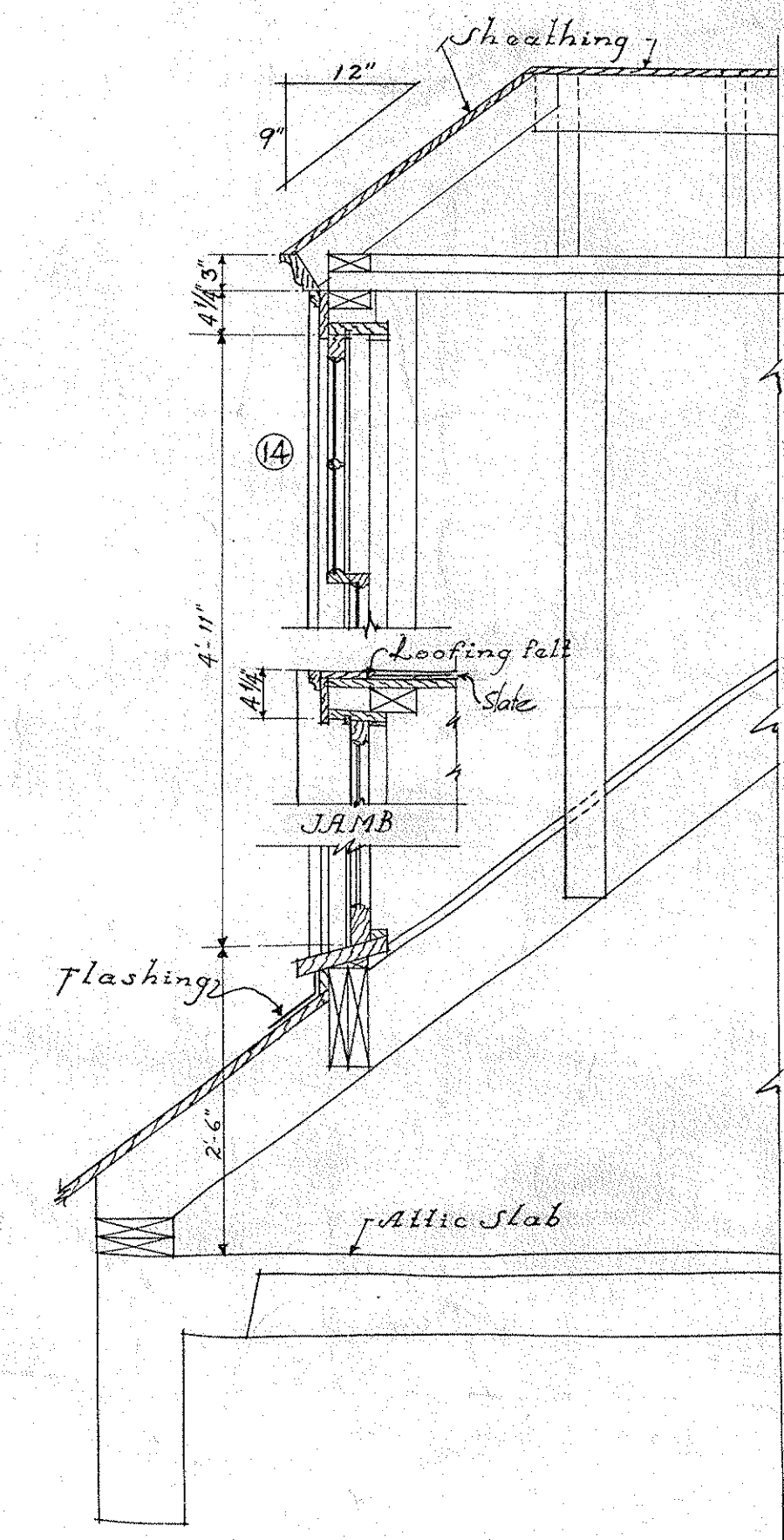
Nurses Quarters Bldg No. 17		
Veterans Administration Facility		
Roanoke, Va.		
Drawn	REVISIONS	NUMBER
Johnson		
Traced		
Sect. Chf.		
Date Nov. 9, 1933		
Sub-Division Chief		
		17-5
		SHEET 5 OF 11
		Proj. No. F.P.V.A. 12

VETERANS ADMINISTRATION  
WASHINGTON, D. C.

APPROVED: *Frank G. Dines*  
ADMINISTRATOR  
*George E. Jones*  
ASSISTANT ADMINISTRATOR  
*W. H. Smith*  
DIRECTOR OF CONSTRUCTION  
*W. S. Talbot*  
CHIEF, TECHNICAL DIVISION

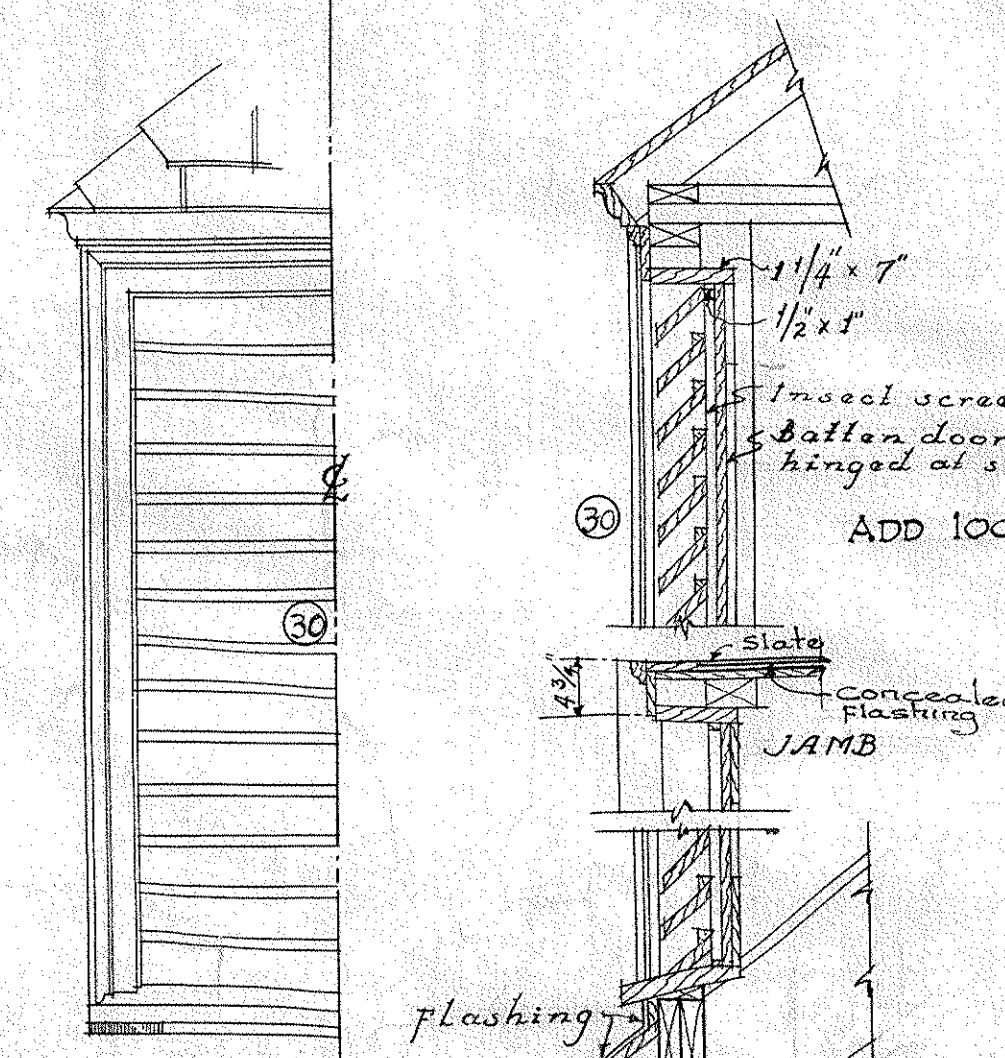
- SOCIAL ROOM DETAILS -

DORMER DETAILS  
Scale 3/4" = 1'-0"



SECTION

PART SIDE ELEVATION



HALF ELEVATION

Note: See dormer # 14 for framing details & mouldings

DETAILS OF WOOD LOUVERS  
Scale 3/4" = 1'-0"