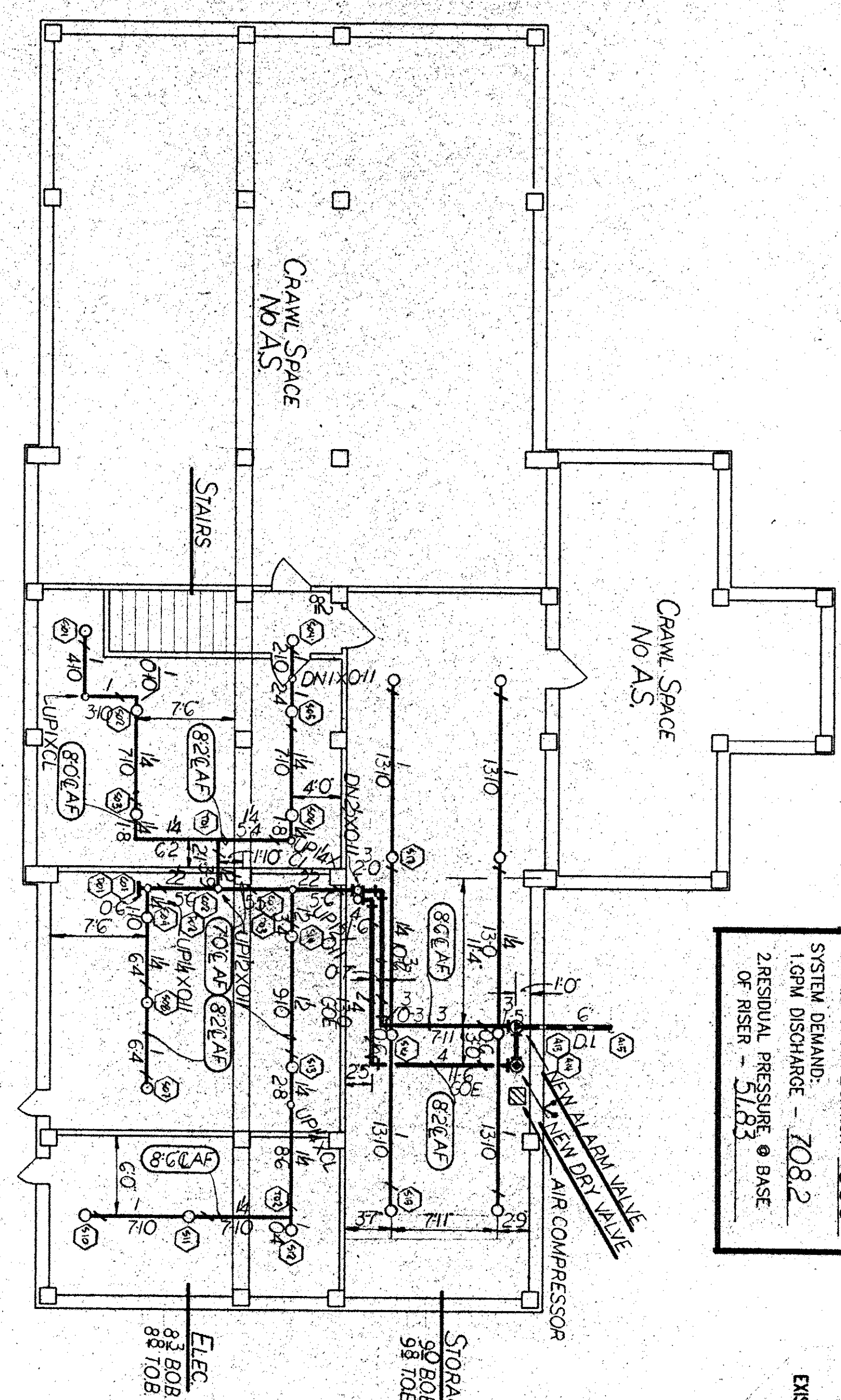
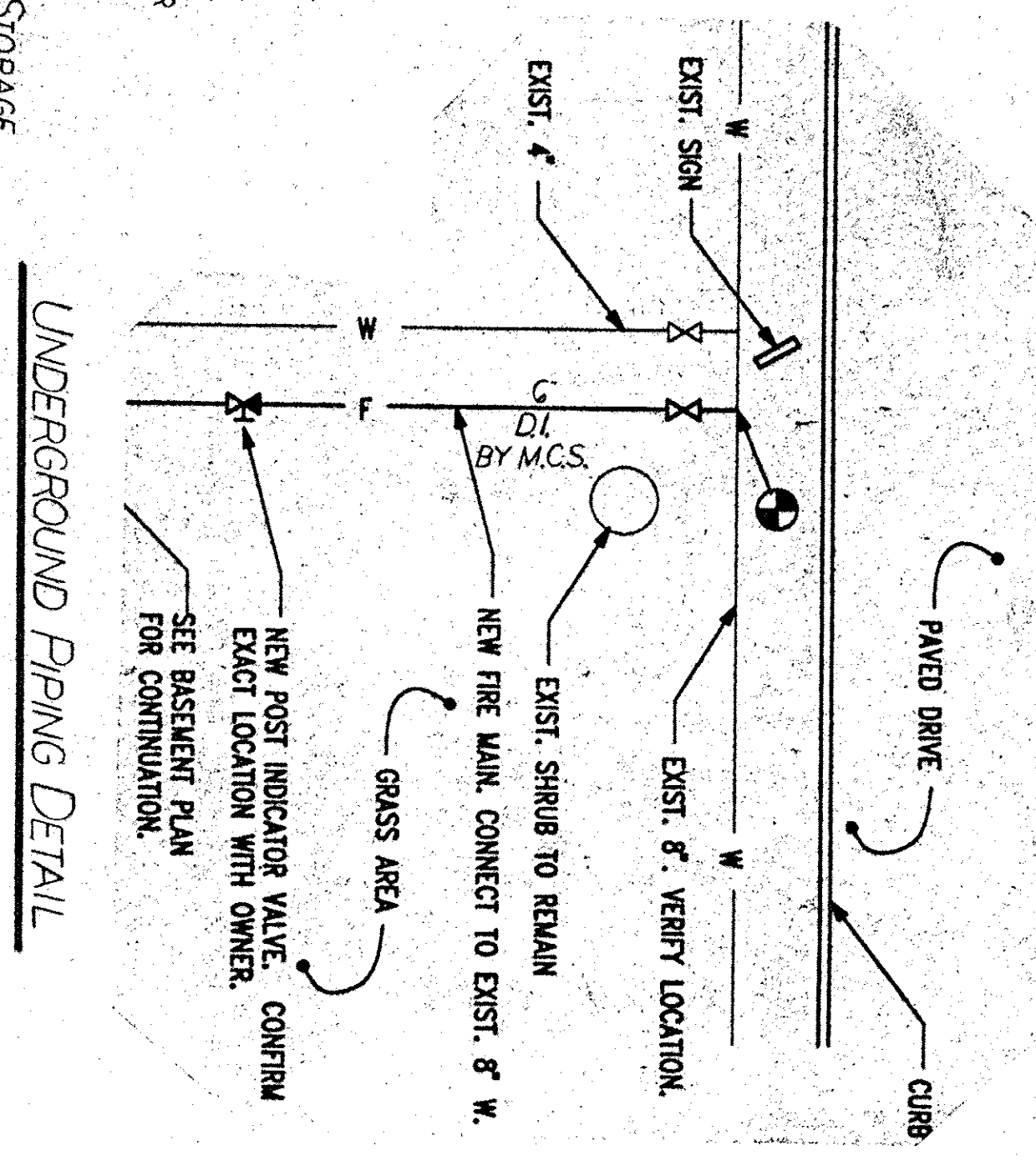


BUILDING 17 FIRST FLOOR PLAN
1/8"=1'-0"

HYDRAULIC INFO.
THIS BUILDING IS PROTECTED BY A
HYDRAULICALLY DESIGNED
AUTOMATIC FIRE SPRINKLER SYSTEM
LOCATION - STORAGE/MECH.
NO. of A.S. - 17
BASIS OF DESIGN - 20
1. DENSITY - 1.500
2. AREA OF APPLICATION - 1500
SYSTEM DEMAND:
1.0PM DISCHARGE - 208.2
2. RESIDUAL PRESSURE @ BASE
OF RISER - 51.83

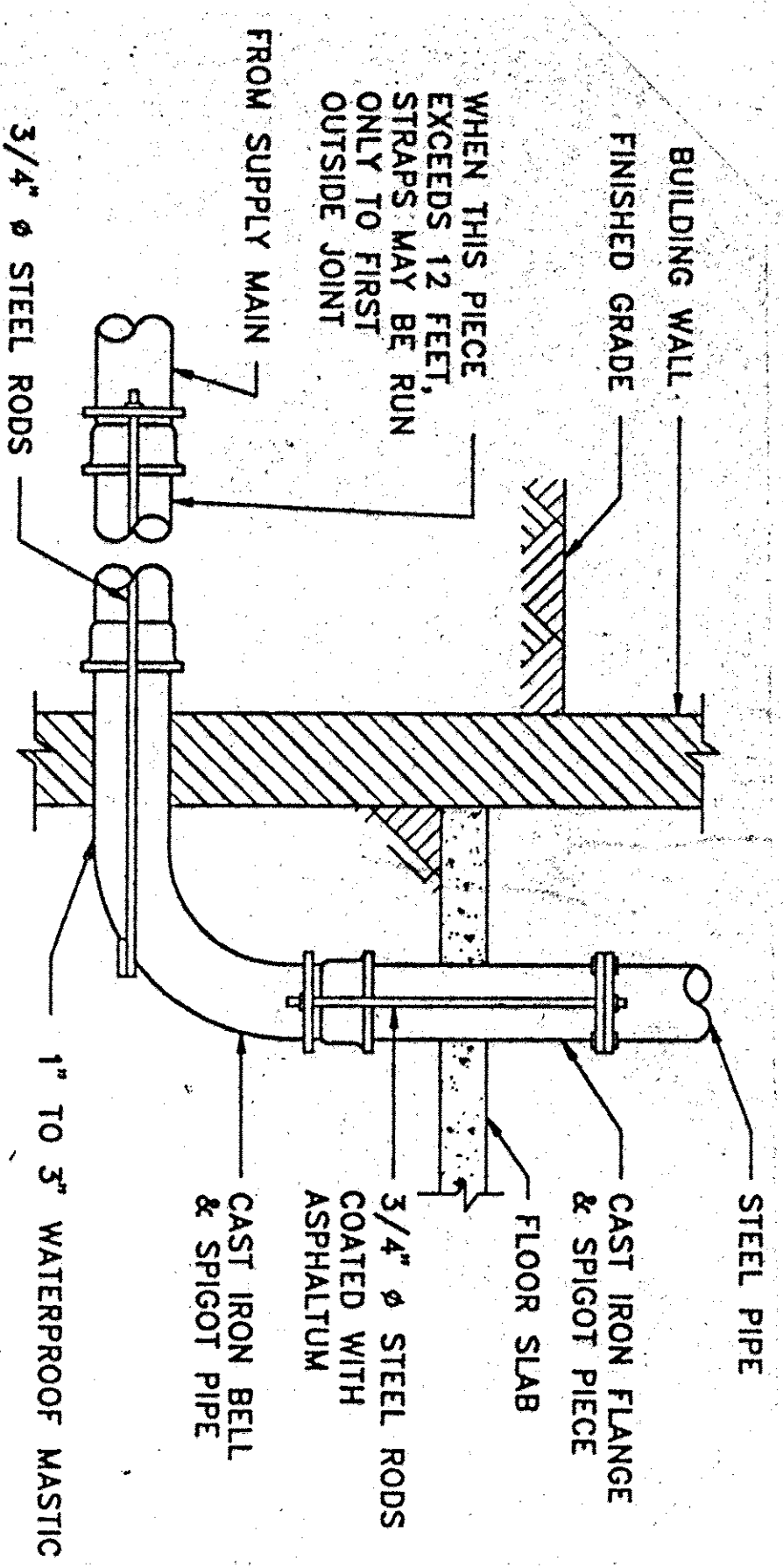


BUILDING 17 BASEMENT PLAN
1/8"=1'-0"

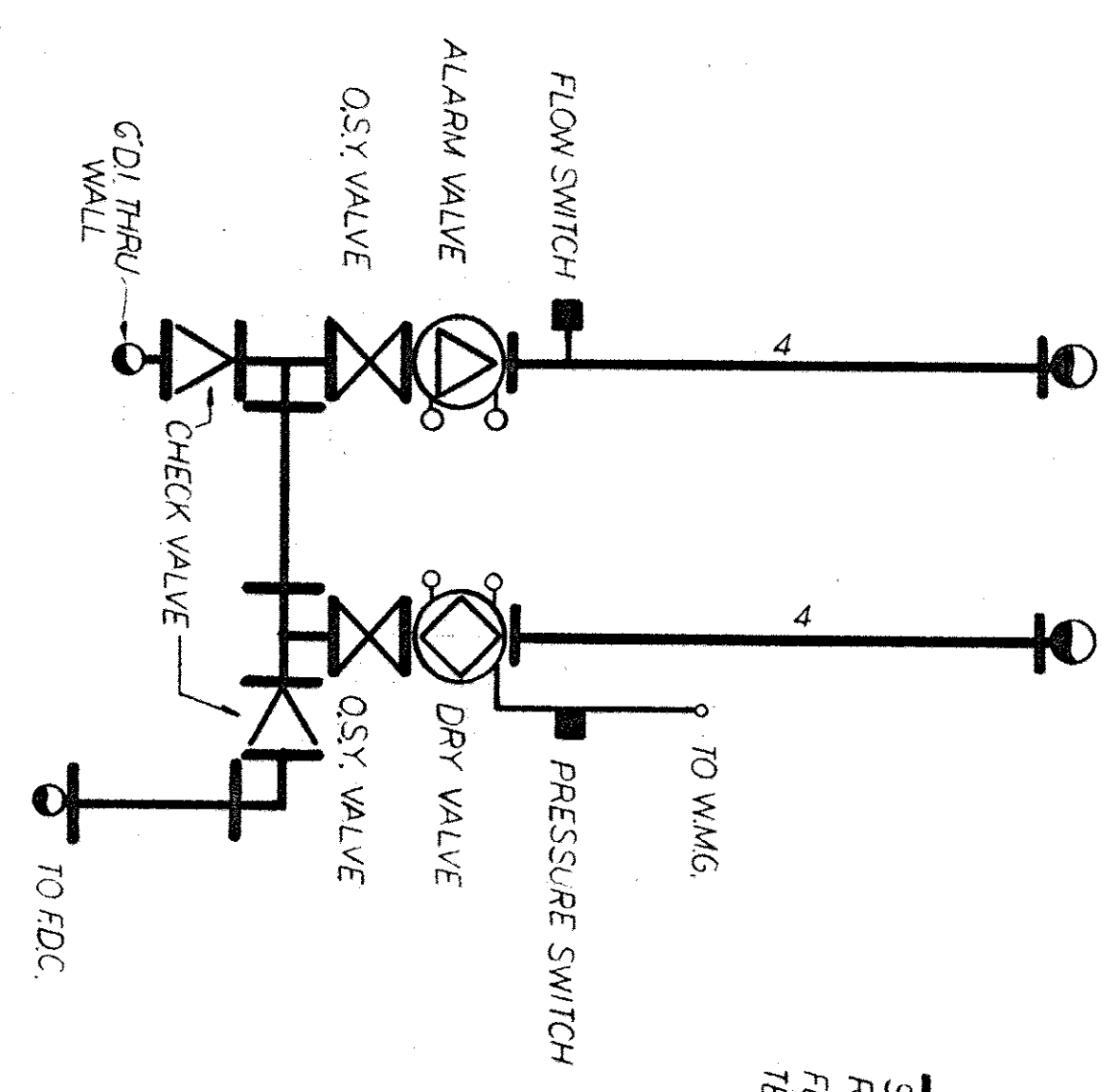


UNDERGROUND PIPING DETAIL

- LEGEND
- BRASS UPRIGHT MOD. G&R
 - RECESSED PENDENT MOD. G&R
 - ▲ HORIZONTAL SIDE-WALL MOD. G&R
 - DRY VALVE MOD. G3
 - ALARM VALVE MOD. H3
 - MOSBY VALVE MOD. C&V
 - CHECK VALVE MOD. C&V KENNEDY
 - PRESSURE SWITCH PSOA
 - FLOW SWITCH VSRF
 - FDC UNIT
 - PIPE HANGER



INCOMING FIRE PROTECTION WATER SERVICE DETAIL



WATER INFO.
STATIC 90
RESIDUAL 63
FLOW 1255
TEST BY MCS AND VAMC 5/7/96 900 AM

DWG. # 2235 AS-BUILT PIPING DWGS.

ASBUILT'S		1000 GRADE STREET, N.E. ROANOKE, VIRGINIA 24012 Phone (703) 345-8818	
INSTALLED BY:		Magic City Sprinkler, Inc.	
FIRE PROTECTION SYSTEMS		BLDG. 17 FLOOR PLAN	
SYMBOL	TYPE	QUANTITY	REVISIONS
○	155° BU	40	1 8-22-96 PW
●	155° RP	10	
▲	155° RP	32	
DRAWN BY: JFC		CONTRACT NO. 3339-95	
APPROVED BY: JFC		SCALE 1"=1'-0"	
CONTRACT WITH:		SHEET NO. 1 of 2	