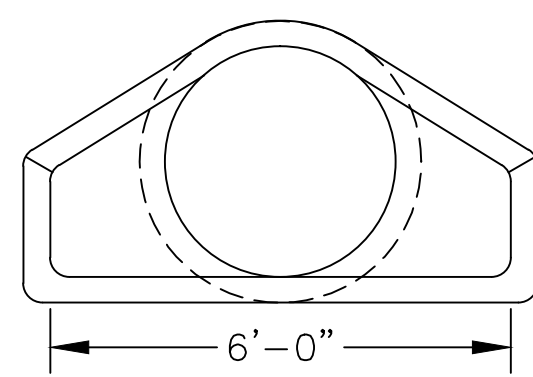


CU-6
CU-502

MANHOLE FRAME AND COVER
NTS

- SHEET KEYNOTES
1. Provide large diameter no base manhole section with doghouse cutouts for 30" corrugated HDPE pipe.
 2. Provide cast in place concrete base a minimum of 12 inches thick below existing HDPE pipe.
 3. Provide a minimum 12" thick aggregate base below existing pipe and cast in place base. Support manhole section on concrete bricks until cast in place base is complete.




36" REINFORCE CONCRETE PIPE
FLARED END SECTION
 NTS

<div>Revisions</div> <div>Date</div>			Approved: Safety Manager		Drawing Title CU-502 STORM DRAINAGE PIPE AND STRUCTURE DETAILS	Project Title INSTALL STORM WATER OVERFLOW			Date 8-24-2012	<div>Veterans Affairs</div>
			Approved: GEMS Coordinator						Project No. 658-12-107	
			Approved: Infection Control Officer	Approved: Chief of Staff	Approved: Chief of Facility Management Svc.	Building Number	Checked	Drawn EEC	DRAWING NO. 2562	
			Approved: Energy Engineer	Approved: Associate Director	Approved: Medical Center Director	Location VAMC SALEM, VA.			Sheet 8 Of 9	