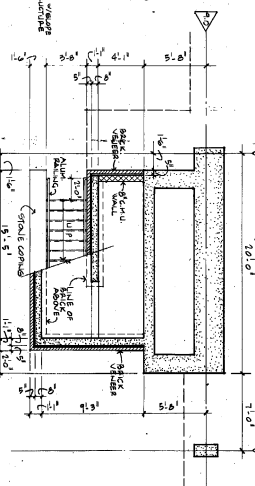
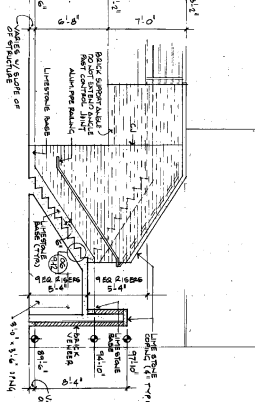
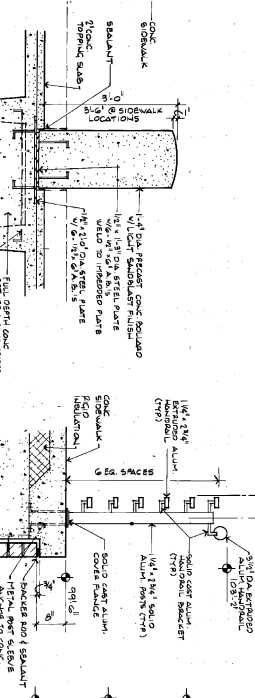


11 TYPICAL ALUM. PIPE RAILING DETAIL
SCALE 1/4"=1'-0"

10 CONCRETE PAVEMENT/CURB DETAIL
SCALE 1/4"=1'-0"

12 TYP. CONCRETE CURB/SIDEWALK DETAIL
SCALE 1/4"=1'-0"

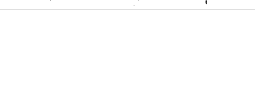


07 PRECAST CONCRETE POLLARD
SCALE 1/4"=1'-0"

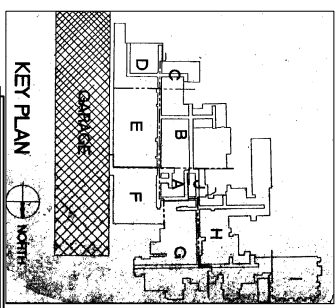
06 ARCH. RECTANGULAR ALUM. RAILING DETAIL
SCALE 1/4"=1'-0"

05 STAIR 16 - SECTION
SCALE 1/4"=1'-0"

EXISTING DETAIL PLAN



04 STAIR 16 - LEVEL B PLAN
SCALE 1/4"=1'-0"



CONSULTANTS	ADDRESS	NORTH REFERENCE	PROJECT ENGINEERS	DRAWN BY	KEY GROUND SHOCK CONSTRUCTION PLAN	WEST TENTH STREET	ON	20 JAN 2002	ENGINEERING AND DESIGN SERVICES
NA	Richard L. Roudsheel, VA Medical Center 1401 W. 10th St. Indianapolis, Indiana 46202			Q. MOORE	KEY GROUND SHOCK CONSTRUCTION				