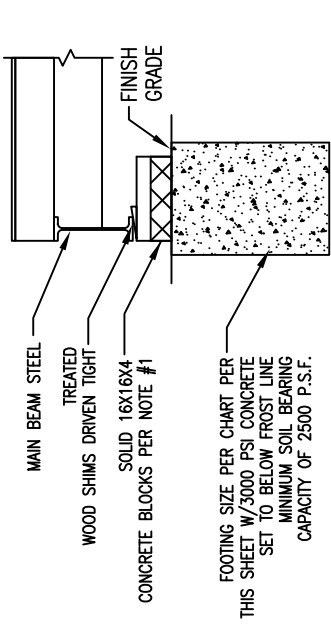
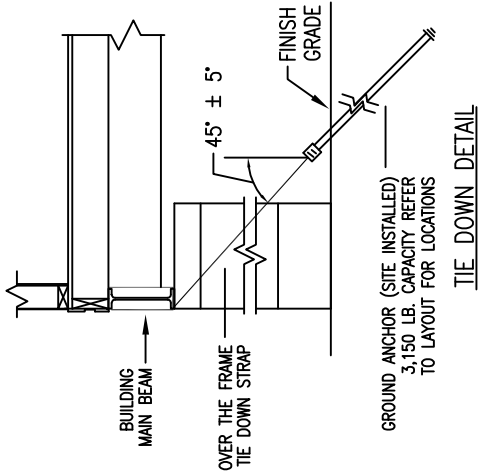


NOTE:  
THIS BLOCKING DESIGN BY MOBILE/MODULAR EXPRESS, IS ONLY A SUGGESTED DESIGN. FOUNDATION DETAILS, FOUNDATION SIZES & TIE DOWN LOCATIONS SHALL BE SPECIFIED ACCORDING TO LOCAL JURISDICTION. FINAL DESIGN IS SUGGESTED TO BE APPROVED BY A PROFESSIONAL ENGINEER FAMILAR WITH ALL OF THE SITE CONDITIONS.

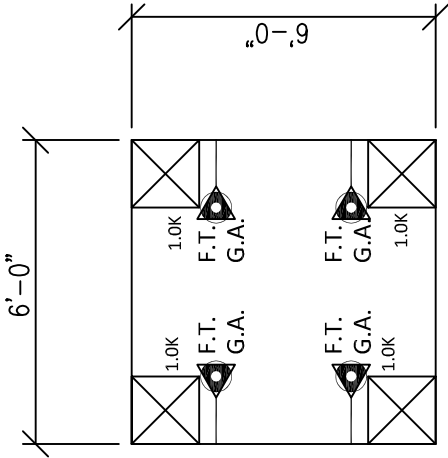
MINIMUM PIER DIMENSIONS (IN)	ROUND PIER MAXIMUM LOADS (KIPS)					
	ALLOWABLE SOIL BEARING CAPACITY					
	2000PSF	2500PSF	3000PSF	3500PSF	4000PSF	
18	3.5	4.4	5.3	6.2	7.1	
20	4.4	5.5	6.5	7.6	8.7	
22	5.3	6.6	7.9	9.2	10.6	
24	6.3	7.9	9.4	11.0	12.6	
26	7.4	9.2	11.1	12.9	14.7	
28	8.6	10.7	12.8	15.0	17.1	
30	9.8	12.3	14.7	17.2	19.6	
32	11.1	14.0	16.8	19.5	22.3	
34	12.6	15.8	18.9	22.1	25.2	
36	14.1	17.7	21.2	24.7	28.3	
38	15.7	19.7	23.6	27.5	31.4	
40	17.5	21.8	26.2	30.5	34.9	
42	19.2	24.0	28.8	33.6	38.4	
44	21.1	26.3	31.6	36.9	42.2	
46	23.0	28.8	34.6	40.3	46.1	
48	25.1	31.4	37.6	43.9	50.2	



MAIN BEAM PIER LOCATIONS  
FOUNDATION DETAIL



TIE DOWN DETAIL



BLOCKING PLAN

PROVIDE EQUAL TO OR BETTER: 6X6 GUARD SHACK AS INDICATED ON THESE DRAWINGS ARE FOR QUICK REFERENCE ONLY AND SHALL BE USED TO GET BASIS OF DESIGN. VENDORS WITH NEED TO PROVIDE THEIR OWN SUBMITTAL OF ACTUAL GUARD SHACK.

FOUNDATION NOTES:

- ALL FOUNDATION CONSTRUCTION, MATERIALS AND INSTALLATION SHALL BE IN ACCORDANCE WITH ALL APPLICABLE STATE AND LOCAL CODES. THE PIER LOCATIONS PROVIDED ON THIS PLAN ARE FOR THE SOLE PURPOSE OF IDENTIFYING THE LOCATION OF THE REQUIRED BLOCKING POINTS FOR THIS BUILDING. FOUNDATION REQUIREMENTS ARE NOT KNOWN DUE TO VARYING SOIL CONDITIONS. FOUNDATION REVIEW AND INSPECTION IS TO BE PERFORMED BY THE LOCAL OFFICIAL HAVING JURISDICTION.
  - MINIMUM CONCRETE FOOTING DEPTH OF BELOW FROST LINE AND PER LOCAL CONDITIONS - 3,000 PSI @ 28 DAYS.
- SINGLE STACK CONCRETE BLOCK FOR PIERS UP TO 32" IN HEIGHT WITH TYPE M OR S MORTAR. DOUBLE STACK CONCRETE BLOCK FOR PIERS BETWEEN 32" & 60" WITH TYPE M OR S MORTAR.
- CORNER PIERS OVER 24" HIGH (THREE BLOCKS) SHALL BE DOUBLE BLOCK CONSTRUCTION WITH TYPE M OR S MORTAR.
- TIE-DOWN STRAPS TO BE 1-1/4" X .035" TYPE-1, FINISH B, GRADE 1 ZINC COATED STEEL STRAPPING CONFORMING WITH ASTM d3953-91. TIE DOWN STRAPS AND CONNECTING HARDWARE SHALL HAVE A MINIMUM WORKING CAPACITY OF 3,150 LBS.
- GROUND ANCHORS SHALL HAVE A 3,150# MINIMUM WORKING CAPACITY AND SHALL BE INSTALLED IN ACCORDANCE WITH THE MANUFACTURER'S SPECIFICATIONS.
- THE MINIMUM NET AREA OF VENTILATION OPENINGS SHALL NOT BE LESS THAN 1SQ. FT IN 150 SQ. FT OF CRAWL-SPACE AREA.
- MINIMUM CRAWL SPACE ACCESS AREA TO BE 18" X 24"

PAC VAN  
6'x6' GUARD SHACK

BLOCKING  
DIAGRAM

ISSUE:

DESIGNED:	3-8-2012	DRAWN BY:	PPM
SERIAL #:	-	SCALE:	1/4"=1'-0"
PRINTED:	3/8/12 2:07PM	DRAWING #:	
APPROVED BY:			

S2