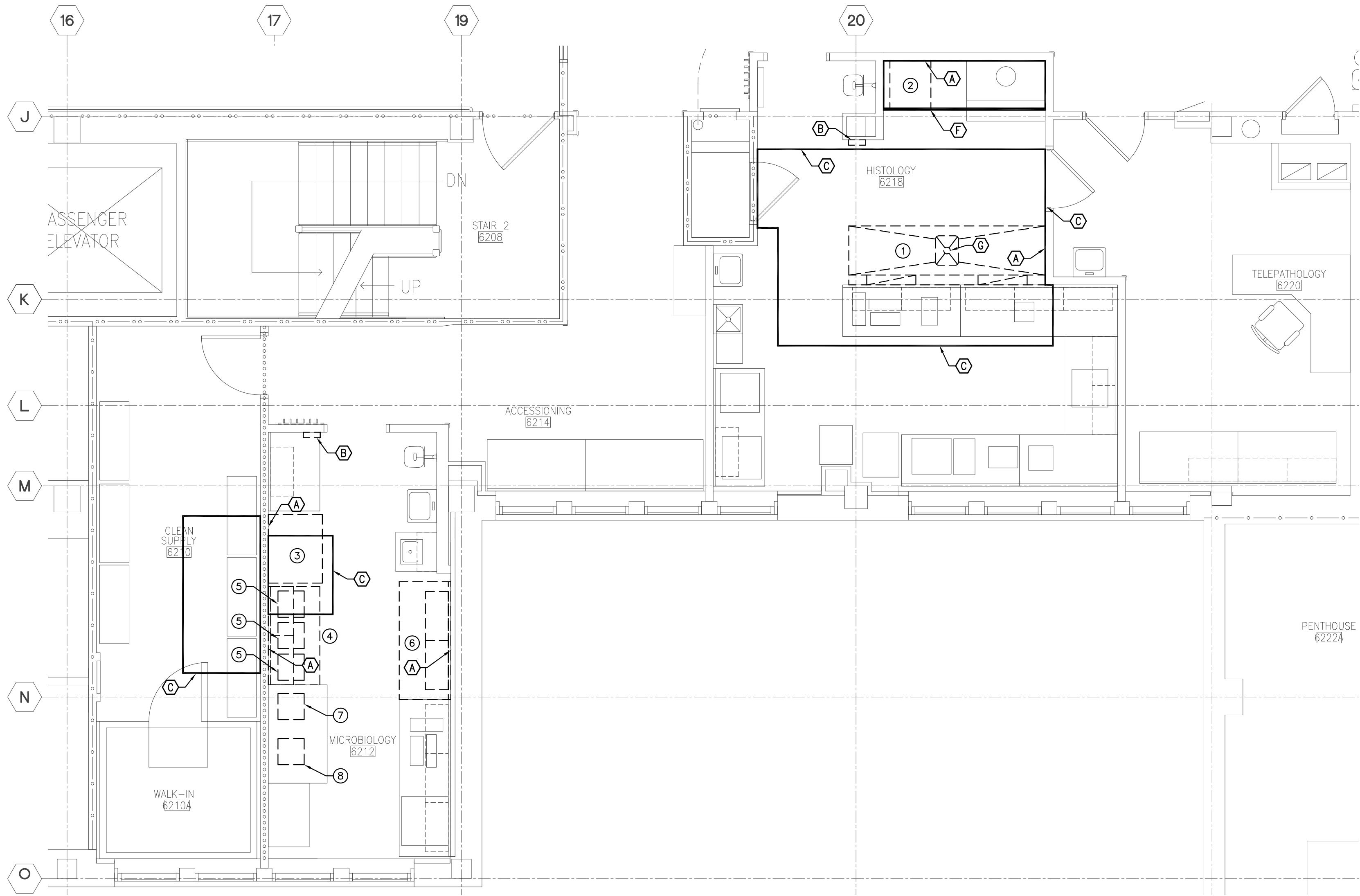
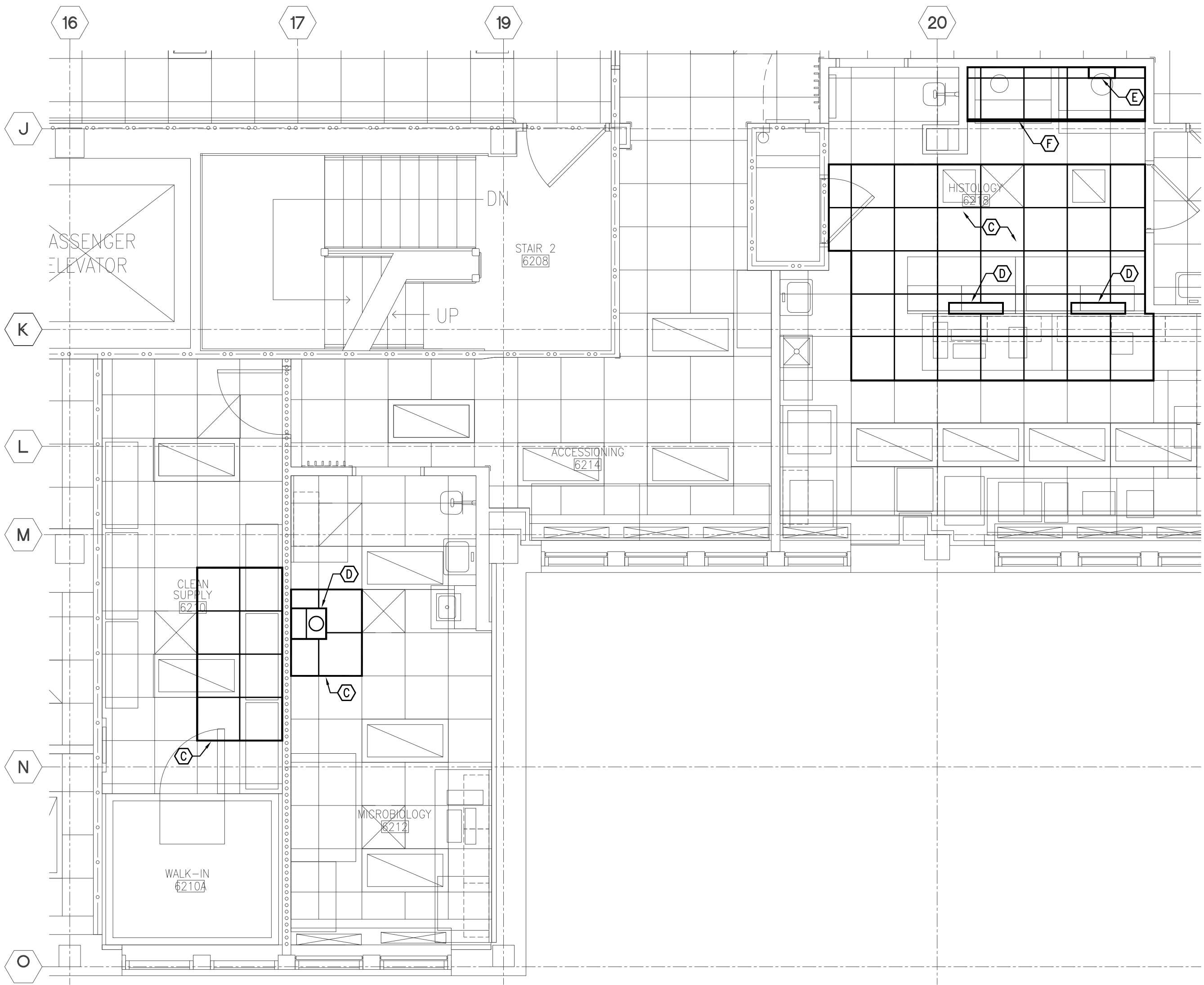


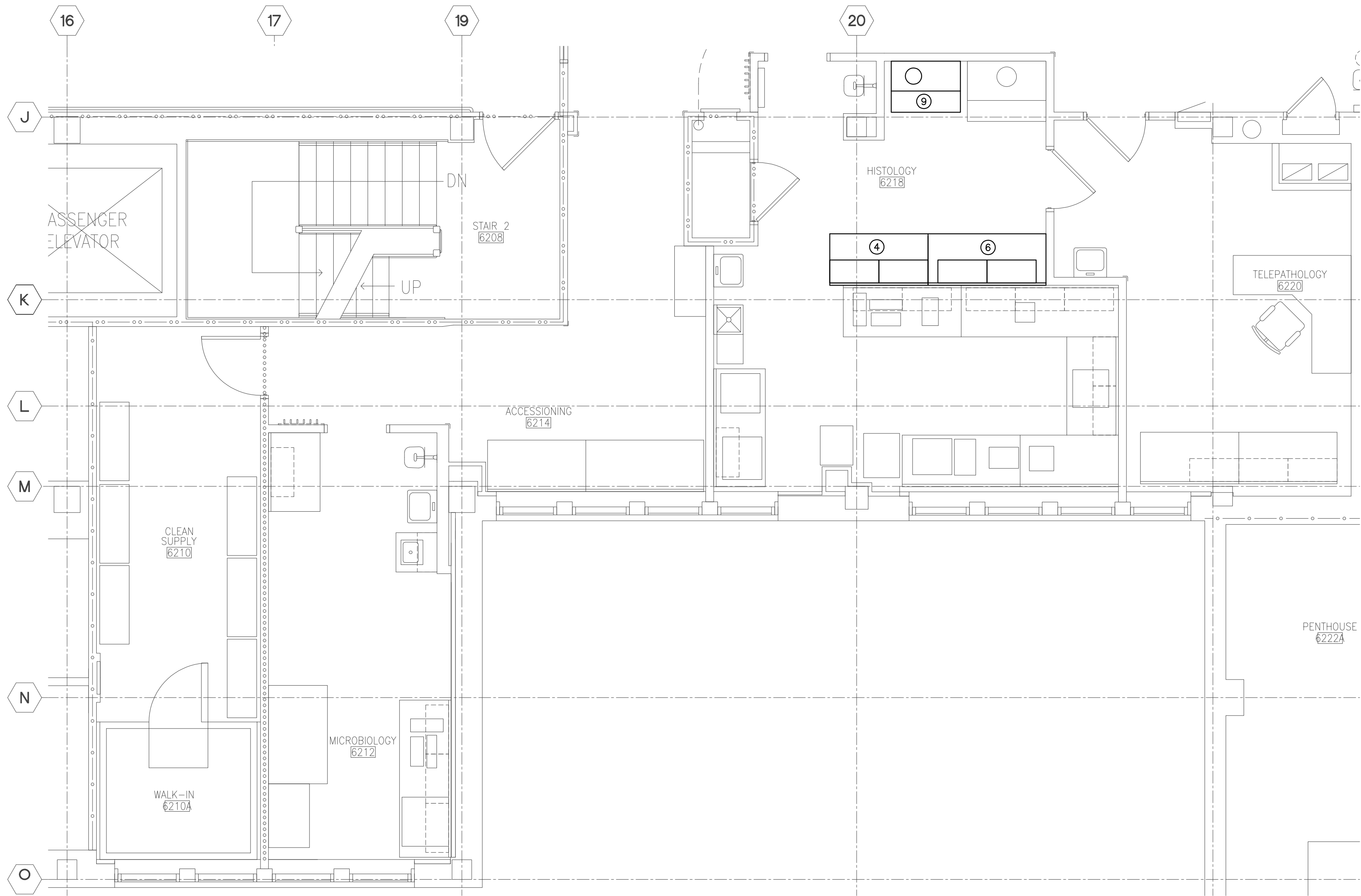
three inches = one foot
one and one half inches = one foot
one inch = one foot
three quarters inch = one foot
one half inch = one foot
three eighths inch = one foot
one quarter inch = one foot
one eighth inch = one foot



1 SIXTH FLOOR PLAN - DEMOLITION
1/4" = 1'-0"



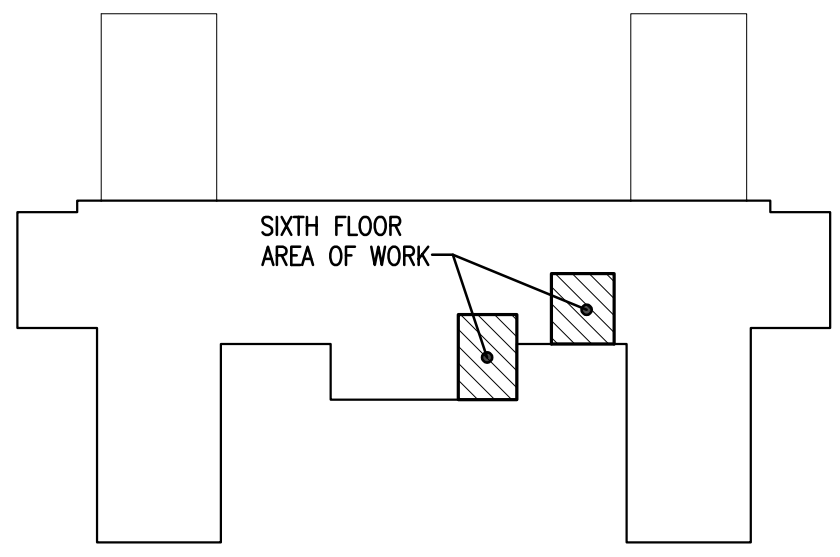
3 SIXTH FLOOR REFLECTIVE CEILING PLAN
1/4" = 1'-0"



2 SIXTH FLOOR PLAN - NEW
1/4" = 1'-0"

EQUIPMENT SCHEDULE		
MARK	EQUIPMENT	NOTES
1	BACKDRAFT GROSSING TABLE	REMOVE IN ITS ENTIRETY AND HAND OVER TO OWNER. COORDINATE WITH EC, MC AND PC.
2	XYLENE RECYCLER ON CART	RELOCATE PER OWNER'S INSTRUCTIONS.
3	BIOLOGICAL SAFETY CABINET	ONCE WORK IN ROOM 6218 IS COMPLETED AND NEW BIOSAFETY CABINET IS INSTALLED AND CERTIFIED, REMOVE EXISTING BIOSAFETY CABINET IN ITS ENTIRETY AND HAND OVER TO OWNER. COORDINATE WITH EC AND MC. EXISTING BIOSAFETY CABINET SHALL REMAIN IN PLACE AND OPERATIONAL AS NOTED ABOVE.
4	LAB BENCH (5'-0")	RELOCATE PER OWNER'S INSTRUCTIONS. COORDINATE WITH EC.
5	INCUBATOR	RELOCATE PER OWNER'S INSTRUCTIONS. COORDINATE WITH EC.
6	LAB BENCH (6'-0")	RELOCATE PER OWNER'S INSTRUCTIONS. COORDINATE WITH EC.
7	MICROSCAN W/ PRINTER BELOW	RELOCATE PER OWNER'S INSTRUCTIONS. COORDINATE WITH EC.
8	CEPHID W/ PRINTER BELOW	RELOCATE PER OWNER'S INSTRUCTIONS. COORDINATE WITH EC.
9	NEW PURIFIED LOGIC+ CLASS II, TYPE A2 BIOSAFETY CABINET	INSTALL PER MANUFACTURER'S INSTRUCTIONS. ITEM #50-231-0100; CABINET, BIOSAFETY; LABCONCO; PURIFIER; LOGIC-PLUS; CLASS II; A2; 3' WIDE; SASH: 10"; ERGONOMIC DESIGN; 2 GFCI DUPLEX RECEPTACLES; COLOR DISPLAY W/ MYLOGIC OS; FOR BIOSAFETY LEVELS 1, 2, 3; INCLUDES BASE STAND; 115 V / 15 AMPS; HAZARDOUS MATERIAL. COORDINATE WITH EC AND MC. CONTRACTOR SHALL BE RESPONSIBLE FOR CERTIFICATION OF NEW BIOSAFETY CABINET.

KEYED NOTES	
A	REPAIR, PATCH AND PAINT EXISTING WALL TO MATCH ADJACENT SURFACES DUE TO REMOVAL OF EXISTING EQUIPMENT.
B	COORDINATE REMOVAL OF CONTROL PANEL WITH ALL OTHER TRADES AND REPAIR, PATCH AND PAINT EXISTING WALL TO MATCH ADJACENT SURFACES.
C	REMOVE AND REPLACE EXISTING CEILING TILE AS REQUIRED FOR ALL WORK WITHIN SCOPE OF PROJECT. COORDINATE WITH ALL OTHER TRADES. INSTALL CEILING GRID TO MATCH EXISTING ELEVATIONS.
D	REPAIR CEILING GRID AND REPLACE CEILING TILES TO FILL VOID FROM REMOVED EQUIPMENT EXHAUST DUCTWORK.
E	PROVIDE CEILING TILE AND SEAL AROUND EXISTING DUCTWORK FROM EXISTING HOOD.
F	RAISE CEILING GRID ABOVE NEW BIOSAFETY CABINET 2". COORDINATE HEIGHT ADJUSTMENT WITH OWNER AND ALL OTHER TRADES. REPAIR, PATCH AND PAINT EXISTING WALL TO MATCH ADJACENT SURFACES DUE TO RAISING CEILING GRID.
G	INFILL EXISTING PENETRATION AND COORDINATE WITH OWNER TO PATCH EXISTING FLOOR TO MATCH ADJACENT SURFACE DUE TO SANITARY PIPE REMOVAL THROUGH FLOOR. COORDINATE WITH PLUMBING CONTRACTOR.



KEY PLAN
NOT TO SCALE

CONSULTANTS:		ARCHITECT/ENGINEERS:		Drawing Title ARCHITECTURAL PLANS		Project Title RENOVATE MICROBIOLOGY DESIGN		Project Number 585-17-113		Office of Construction and Facilities Management Department of Veterans Affairs	
								Building Number 1			
								Drawing Number A101			
								Date JULY 30, 2018		Dwg. 02 of 08	
								Checked TCC			
								Drawn NCF			

100% Construction Documents

Revisions:

07/30/2018

Date

MEP Associates, LLC | 2720 Arbor Court | Eau Claire, WI 54601

Phone: 715.832.5660 | Fax: 715.832.5668 | www.mepassociates.com

MEP PROJECT NO.: 029.18.01