

PLUMBING PIPING LEGEND	
	CIRCUIT SETTER
	BALL VALVE OR SHUT-OFF VALVE
	SPRING CHECK VALVE
	PRESSURE REDUCING VALVE (PRV)
	SOLENOID CONTROL VALVE
	RPZ VALVE OR BACKFLOW PREVENTER
	HAMMER ARRESTOR (PISTON TYPE)
	HAMMER ARRESTOR (BELLOWES TYPE)
	PIPE UNION
	PIPE REDUCER FITTING
	END CAP
	PIPE CONNECTION
	FLOW DIRECTION ARROW
	PIPING ELBOW DOWN
	PIPING ELBOW UP OR PIPING RISER UP & DOWN
	PIPING TEE DOWN
	PIPING TEE UP OR PIPING RISER UP & DOWN
	HOSE BIB OR WALL HYDRANT
	FLOW METER
	PRESSURE REGULATOR
	NEW TO EXISTING PIPE CONNECTION
	NEW TO EXISTING POINT OF CONNECTION SYMBOL
	PIPING LINEWEIGHT: EXISTING
	PIPING LINEWEIGHT: NEW/DEMOLITION

PLUMBING PIPING LINETYPES	
LINETYPE	DESCRIPTION
	DEMOLITION
	GAS
	SANITARY AG
	SANITARY BG
	STORM AG
	STORM BG
	VENT AG
	VENT BG
	COLD WATER AG
	COLD WATER BG
	HOT WATER AG
	HOT WATER BG
	HOT WATER RETURN AG
	HOT WATER RETURN BG

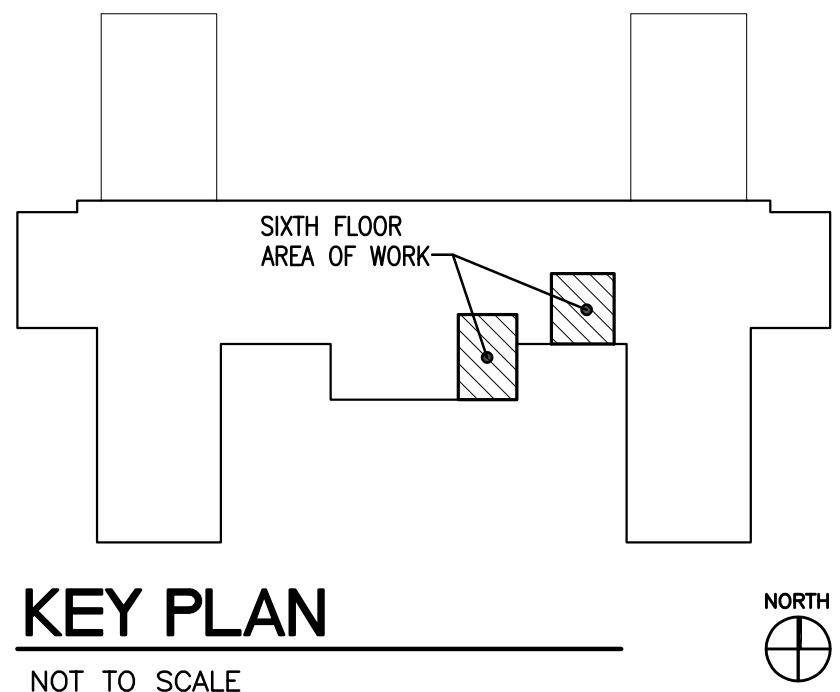
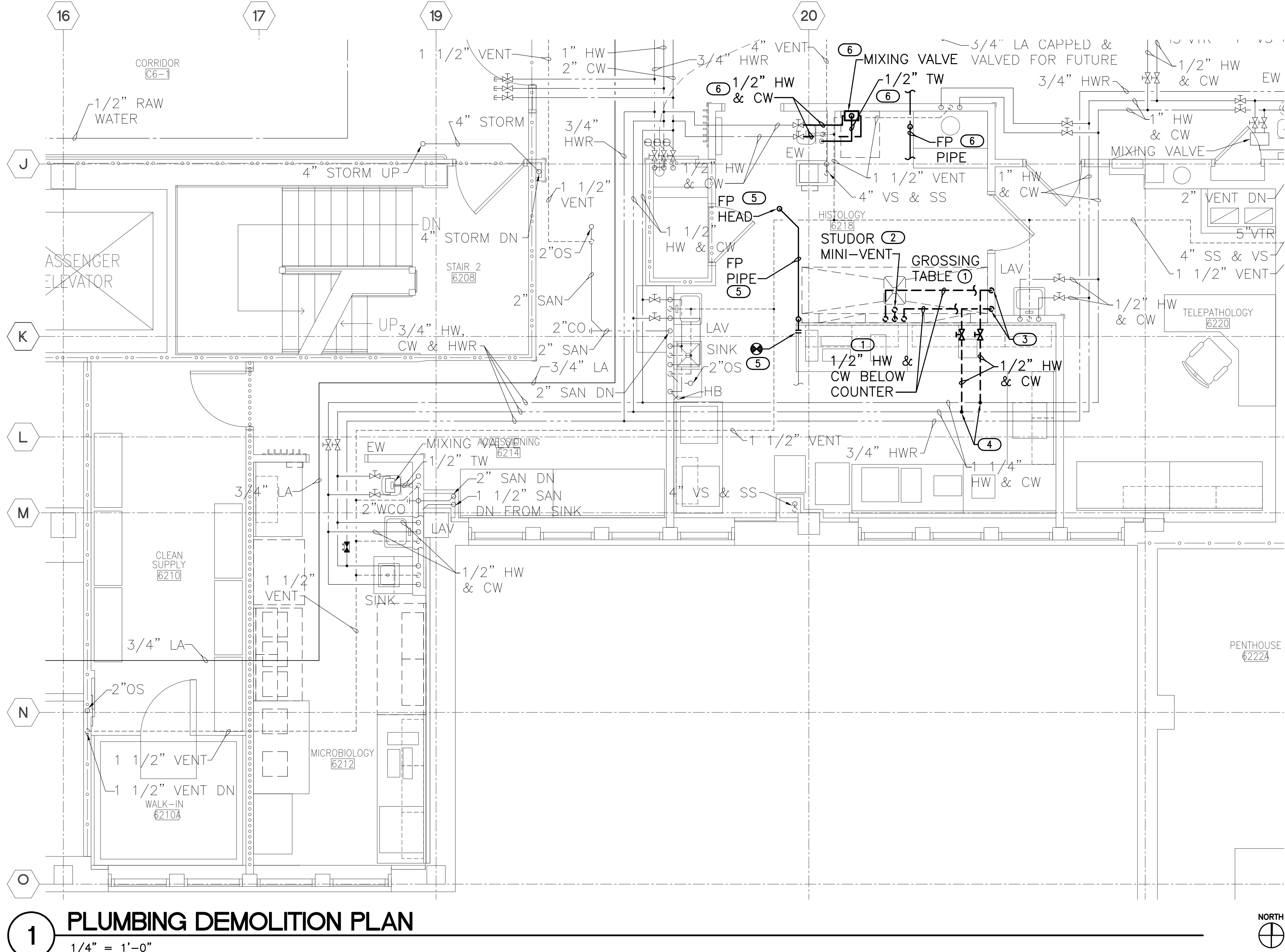
PLUMBING ABBREVIATIONS			
AG	ABOVE GRADE	HWR	HOT WATER RETURN (DOMESTIC)
ADD	ADDENDUM	LA	LABORATORY AIR
ADDL	ADDITIONAL	MC	MECHANICAL CONTRACTOR
ADJ	ADJUSTABLE	MECH	MECHANICAL
AFF	ABOVE FINISH FLOOR	MED	MEDICAL
AFG	ABOVE FINISH GRADE	MIN	MINIMUM
ALT	ALTERNATE	MV	MEDICAL VACUUM
BG	BELOW GRADE	NTS	NOT TO SCALE
CA	COMPRESSED AIR	NPWC	NON POTABLE COLD WATER
CO	CLEANOUT	NPHW	NON POTABLE HOT WATER
COL	COLUMN	O2	OXYGEN
CW	COLD WATER (DOMESTIC)	OS	OPEN SITE DRAIN
DS	DOWNSPOUT / STORM LEADER	PC	PLUMBING CONTRACTOR
DN	DOWN	PLBG	PLUMBING
EC	ELECTRICAL CONTRACTOR	PRES	PRESSURE
EQ	EQUAL	QTY	QUANTITY
F	FURNACE	RPZ	REDUCED PRESSURE ZONE
FCO	FLOOR CLEANOUT		ASSEMBLY-BACKFLOW PREVENTER
FD	FLOOR DRAIN	SAN	SANITARY
FLR	FLOOR	SCH	SCHEDULE
FOR	FUEL OIL RETURN	SPEC	SPECIFICATIONS
FOS	FUEL OIL SUPPLY	SS	SANITARY STACK
FOV	FUEL OIL VENT	TEMP	TEMPERATURE
FS	FLOOR SINK	TW	TEPID WATER (DOMESTIC)
FT	FOOT (FEET)	TYP	TYPICAL
FV	FLUSH VALVE	V	VENT
GA	GENERAL AIR	VS	VENT STACK
GAL	GALLON	VTR	VENT THRU ROOF
GC	GENERAL CONTRACTOR	WA	WASTE ANESTHESIA
GPM	GALLONS PER MINUTE	W/	WITH
HA	HAMMER ARRESTOR	WCO	WALL CLEANOUT
HW	HOT WATER (DOMESTIC)	WC	WATER CLOSET



GENERAL PLUMBING NOTES	
1.	THESE DRAWINGS SHALL NOT BE SCALED. SEE ARCHITECTURAL/CIVIL DRAWINGS FOR DIMENSIONAL INFORMATION. THIS ENGINEER WILL NOT BE LIABLE FOR MISCALCULATED PRODUCT TAKE-OFFS DUE TO SCALING OF DRAWINGS.
2.	CONTRACTOR SHALL COORDINATE ALL WORK WITH OTHER TRADES.
3.	CONTRACTOR SHALL GIVE 2 WEEKS NOTICE IN WRITING TO, AND RECEIVE WRITTEN APPROVAL, FROM THE COR PRIOR TO SHUT DOWN OF ANY SYSTEM OR DISRUPTION OF SERVICE TO ANY AREA. CONTRACTOR SHALL ALSO COORDINATE THE EXACT LOCATION AND TIMING OF SYSTEM(S) SHUTDOWN POINTS WITH THE OWNER REPRESENTATIVE (I.E.: ENGINEERING DEPARTMENT) CONTRACTOR SHALL MAKE EVERY EFFORT POSSIBLE TO MINIMIZE THE DURATION OF ANY DOWNTIME OR DISRUPTION PERIOD. NOTICE MAY BE DONE THROUGH JOB MEETINGS
4.	CONTRACTOR SHALL INSTALL DIELECTRIC UNIONS AT CONNECTIONS OF DISSIMILAR METALS.
5.	CONTRACTOR SHALL REMOVE AND REINSTALL EXISTING ATC CEILING AS REQUIRED FOR DEMOLITION AND NEW WORK. CONTRACTOR TO REPLACE ANY DAMAGED CEILING TILES TO MATCH EXISTING.

PLUMBING RENOVATION NOTES	
1.	WHERE EXISTING PIPING IS DESIGNATED TO BE REMOVED AND CAPPED, ALL PIPING SERVING THE DESIGNATED FIXTURE SHALL BE REMOVED FROM WITHIN WALLS TO THE POINT DESIGNATED ON THE DRAWINGS. PIPING SHALL BE CAPPED BY APPROVED CAPPING METHODS UTILIZING PIPE CAPS INTENDED FOR SUCH USE. ALL CAPS SHALL BE AIRTIGHT AND WATERTIGHT.
2.	WHERE EXISTING SURFACES ARE DISRUPTED DUE TO THE REMOVAL OF EXISTING EQUIPMENT OR PIPING, THIS CONTRACTOR SHALL BE RESPONSIBLE OR THE REPAIR OF DISRUPTED SURFACES TO MATCH EXISTING ADJACENT SURFACES.
3.	EXISTING CONDITIONS AS SHOWN ON THE DRAWINGS ARE TAKEN FROM ORIGINAL AND AS-BUILT DRAWINGS OF THE BUILDING AND IN PART ARE UNVERIFIED. FIELD CONDITIONS SHALL GOVERN. ALL EXISTING CONDITIONS MUST BE VERIFIED PRIOR TO INITIATION OF WORK.
4.	ALL EXISTING PIPING, NOT REMAINING IN SERVICE AFTER NEW CONSTRUCTION, SHALL BE REMOVED.
5.	PLUMBING CONTRACTOR SHALL BE RESPONSIBLE FOR REMOVING ALL EXISTING PLUMBING FIXTURES AND TRIM, PIPING, VALVES, ETC. IN AREAS TO BE DEMOLISHED.
6.	PIPING WHICH IS TO REMAIN IN SERVICE SHALL NOT BE DISTURBED. EXISTING PIPING BROKEN DURING CONSTRUCTION SHALL BE REPLACED WITH NEW PIPING OF THE SAME SIZE AND MATERIAL.
7.	COORDINATE WITH GENERAL CONTRACTOR TO PATCH ALL EXISTING WALLS, FLOORS, CEILINGS, ETC., AS REQUIRED BY NEW WORK.
8.	WHERE DOMESTIC WATER PIPING IS TO BE REMOVED, CONTRACTOR SHALL DEMOLISH BACK TO MAIN AND REMOVE FITTING AT MAIN TO AVOID DEAD-LEGS PER LEGIONELLA REQUIREMENTS.

KEYED NOTES	
①	CONTRACTOR SHALL REMOVE DOMESTIC WATER SUPPLY PIPING TO GROSSING TABLE. REMOVE SHUTOFF VALVES, MIXING VALVE, PIPING, AND ALL ASSOCIATED FITTINGS AND COMPONENTS FROM BELOW GROSSING TABLE DISCONNECT SUPPLY PIPING TO FIXTURE COMPONENTS.
②	CONTRACTOR SHALL DISCONNECT SANITARY WASTE PIPING FROM GROSSING TABLE DISPOSAL AND REMOVE TRAP, TAILPIECE, STUDOR MINI-VENT, AND ASSOCIATED PIPING AND COMPONENTS. CAP 2" SANITARY PIPING BELOW FLOOR IN 5TH FLOOR CEILING SPACE. COORDINATE WITH GC TO INFILL EXISTING PENETRATION AND MATCH ADJACENT SURFACE.
③	CONTRACTOR SHALL REMOVE DOMESTIC WATER PIPING SERVING GROSSING TABLE AND ABANDON WITHIN WALL. COORDINATE WITH OWNER TO PATCH EXISTING WALL TO MATCH ADJACENT SURFACE.
④	CONTRACTOR SHALL REMOVE DOMESTIC WATER PIPING SERVING GROSSING TABLE BACK TO MAINS. REMOVE FITTINGS AT MAIN AND PROVIDE COUPLINGS ON MAINS TO AVOID DEAD-LEGS PER LEGIONELLA REQUIREMENTS.
⑤	RELOCATE EXISTING FIRE PROTECTION BRANCH PIPING AS REQUIRED FOR NEW DUCTWORK INSTALL. COORDINATE WITH ALL OTHER TRADES. COORDINATE REQUIRED FIRE PROTECTION ZONE SHUTDOWN WITH OWNER.
⑥	RELOCATE FIRE PROTECTION BRANCH PIPING, DOMESTIC MIXING VALVE AND ASSOCIATED PIPING AND COMPONENTS TO HIGHER ELEVATION AS REQUIRED FOR CEILING GRID BEING RAISED 2". COORDINATE WITH ALL OTHER TRADES.

PLUMBING SHEET INDEX	
P101	PLUMBING DEMOLITION PLAN



			CONSULTANTS:		ARCHITECT/ENGINEERS:	<div><p>engineers consultants commissioning MEP Associates, LLC 2720 Arbor Court Eau Claire, WI 54701 Phone: 715.832.5640 Fax: 715.832.5646 www.mepassociates.com MEP PROJECT NO.: G0918.01</p></div>	Drawing Title PLUMBING DEMOLITION PLAN		Project Title RENOVATE MICROBIOLOGY DESIGN		Project Number 585-17-113		Office of Construction and Facilities Management	
							Approved: Project Director		Location IRON MOUNTAIN, MICHIGAN		Building Number 1			Drawing Number P101
							Date JULY 30, 2018		Checked TCC		Drawn NCF			
							100% Construction Documents		07/30/2018				Dwg. 03 of 08	
							Revisions:		Date					
<div> Department of Veterans Affairs</div>														