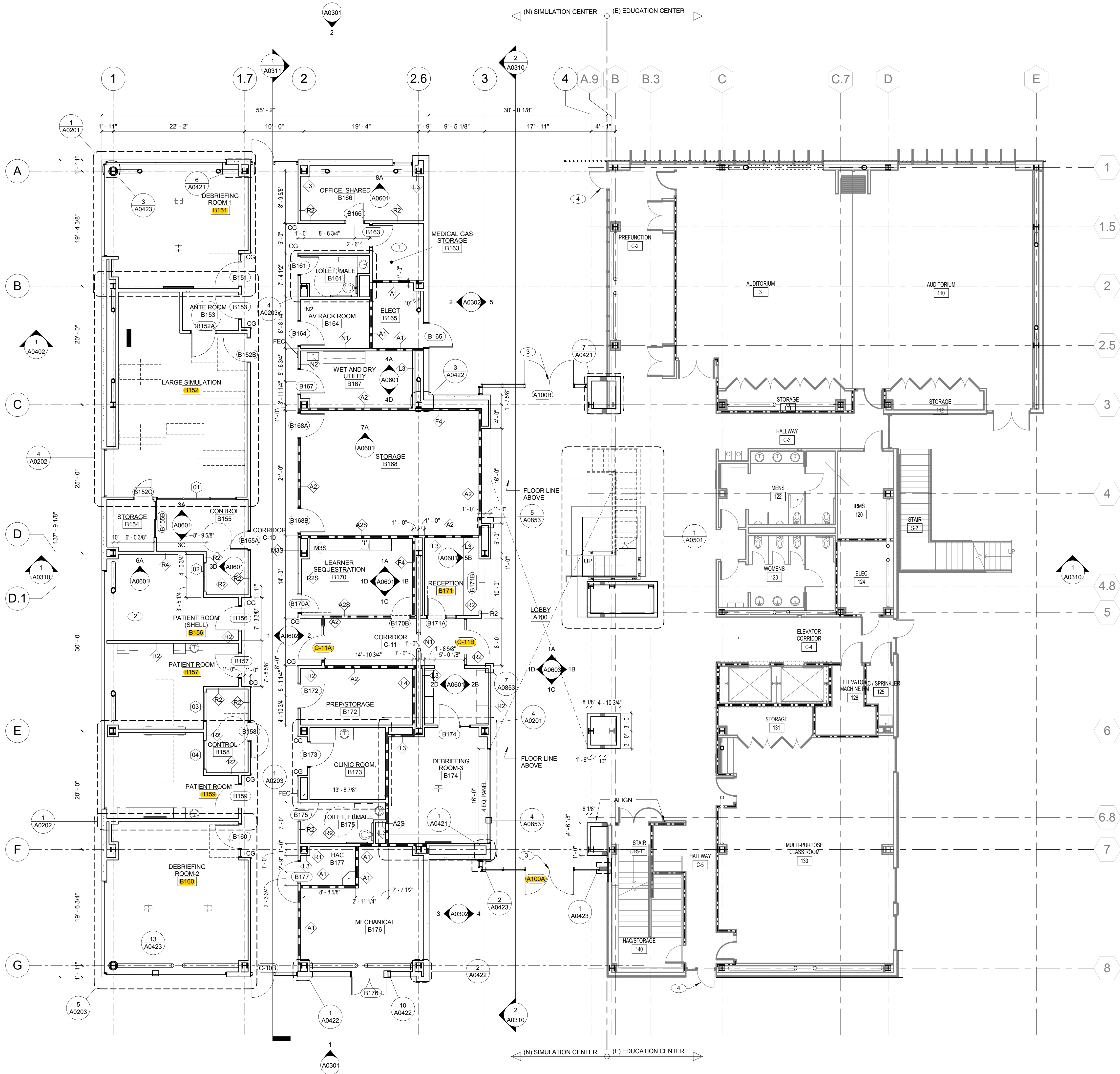


A
three inches = one foot
one and one-half inches = one foot
one inch = one foot
three-quarters inch = one foot
three-eighths inch = one foot
one-quarter inch = one foot
one-eighth inch = one foot
F



1 LEVEL 01 FLOOR PLAN
1/8" = 1'-0"

9	
8	
7	
6	
5	
4	
3	
2	
1	
Revisions	Date

CONSULTANTS:

Seals and Signatures

ARCHITECT/ENGINEERS:
CANNONDESIGN
201 Mission Street, Suite 2400, San Francisco, California 94105 415.243.4170
Baltimore ■ Boston ■ Buffalo ■ Calgary ■ Chicago
Houston ■ Los Angeles ■ Mumbai ■ New York ■ Phoenix
St. Louis ■ San Francisco ■ Shanghai ■ Toronto
Vancouver ■ Victoria ■ Washington DC

Drawing Title
LEVEL 1 FLOOR PLAN
Approved: Project Director
Approver

Project Title VA SIMULATION CENTER		VA Project Number: 640-385
Location Veterans Affairs Palo Alto Health Care System 3801 Miranda Ave, Palo Alto, CA 94304		Building Number: 105
Date JUNE 14, 2013	Checked CW	Drawn WK
Drawing No. A0101		

Veterans Affairs Palo Alto Health Care System

Department of Veterans Affairs

GENERAL NOTES

- ENCLOSE ALL EXPOSED DUCTS, PIPES, CONDUITS, ETC. IN FINISHED SPACE WITH CONSTRUCTION AND FINISH TO MATCH ADJACENT CONSTRUCTION UNO.
- DO NOT DETERMINE DIMENSIONS AND SIZE OF THE GRAPHIC REPRESENTATIONS SHOWN ON THE DRAWINGS BY USING MEASURING DEVICES (DO NOT SCALE). RELY ON THE NUMERIC DIMENSIONS SHOWN ON THE DRAWINGS FOR MEASUREMENT.
- DIMENSIONS ARE TAKEN FROM CENTERLINE OF STRUCTURE, FACE OF CONCRETE OR FINISHED FACE OF PARTITIONS UNO. SEE PARTITION TYPES SHEETS (A1000 SERIES) FOR PARTITION THICKNESS AND MATERIALS.
- DIMENSIONS TO DOOR IS TO THE CENTERLINE OF DOOR, TYPICAL.
- GC SHALL PROVIDE BACKING FOR WALL MOUNTED SHELVING (WVH). REFER TO EQUIPMENT & FURNITURE PLAN FOR WALL MOUNTED SHELVING LOCATION.

KEY NOTES

- SEE PLUMBING DWGS FOR MANIFOLD
- PROVIDE ROOM FINISHES/GAS & ELECT OUTLETS. ONLY CASEWORK IS OMITTED IN PATIENT ROOM # B156
- DOOR BEING USED AS ATRIUM SMOKE CONTROL SYSTEM MAKE-UP AIR. (TIE TO EMERGENCY POWER)
- DOOR BEING USED AS ATRIUM SMOKE CONTROL SYSTEM MAKE-UP AIR. (TIE TO EMERGENCY POWER). REPLACE EXISTING HARDWARE & PROVIDE NEW HARDWARE AS NEEDED.

LEGEND

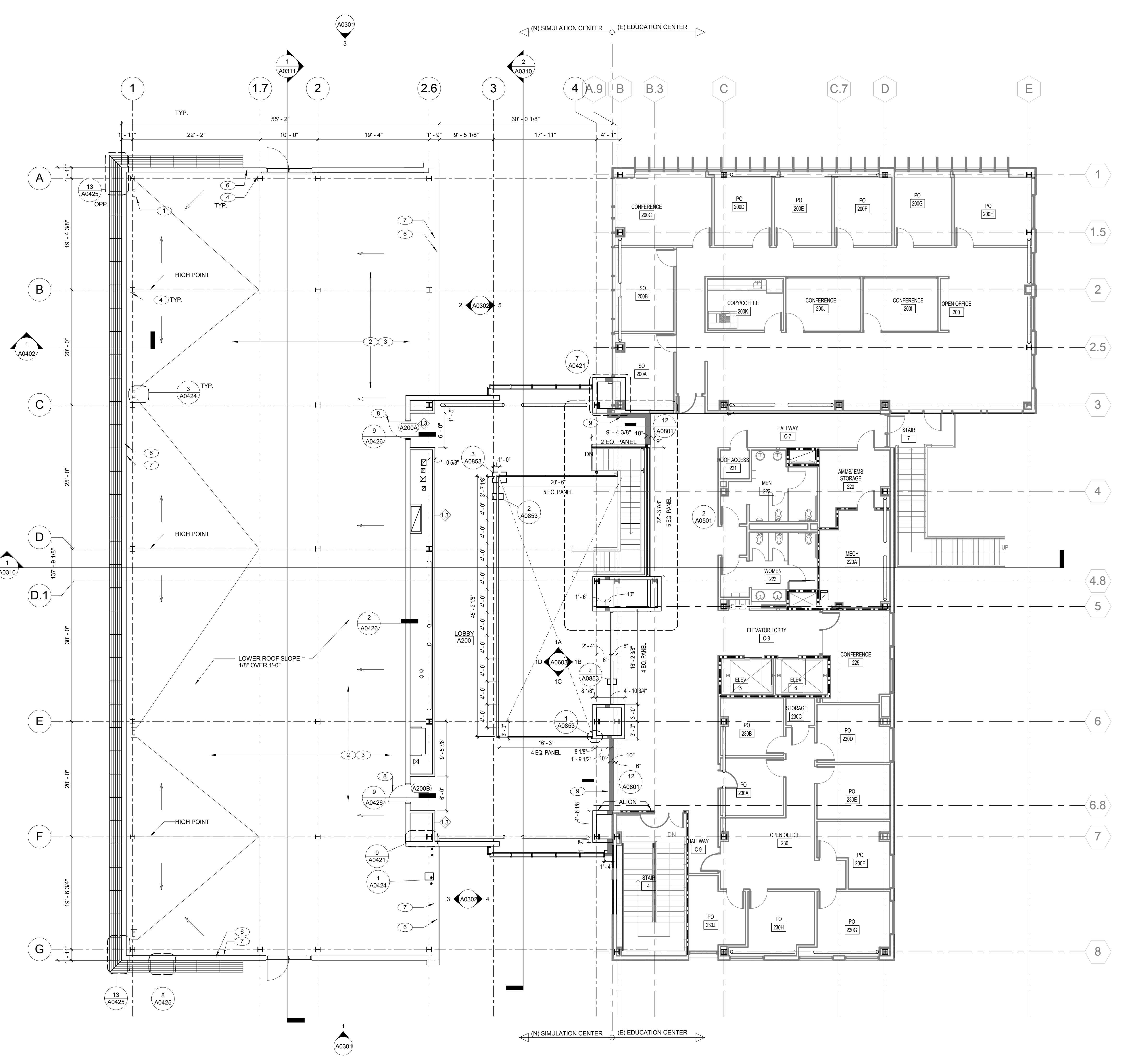
ISSUE FOR BID

PROJECT NORTH

A
B
C
D
E
F

A
B
C
D
E
F

three inches = one foot
one and one-half inches = one foot
one inch = one foot
three-quarters inch = one foot
one-half inch = one foot
three-eighths inch = one foot
one-quarter inch = one foot
one-eighth inch = one foot



1 LEVEL 2 FLOOR PLAN
1/8" = 1'-0"

9		
8		
7		
6		
5		
4		
3		
2		
1		
Revisions		Date

CONSULTANTS:

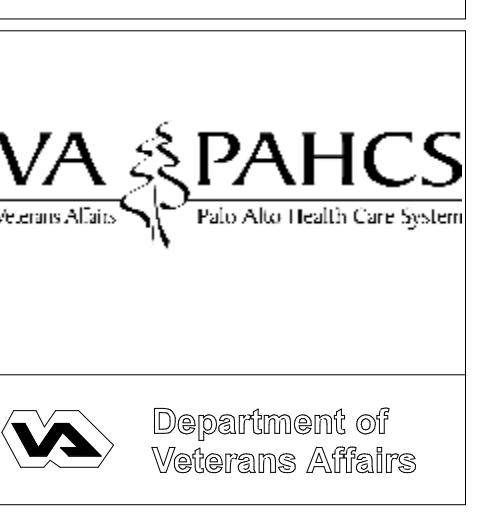
Seals and Signatures

ARCHITECT/ENGINEERS:
CANNONDESIGN
201 Mission Street, Suite 2400, San Francisco, California 94105 415.243.4170
Baltimore ■ Boston ■ Buffalo ■ Calgary ■ Chicago
Houston ■ Los Angeles ■ Mumbai ■ New York ■ Phoenix
St. Louis ■ San Francisco ■ Shanghai ■ Toronto
Vancouver ■ Victoria ■ Washington DC

Drawing Title
LEVEL 2 FLOOR PLAN AND ROOF PLAN
Approved: Project Director
Approver

Project Title
VA SIMULATION CENTER
Location Veterans Affairs Palo Alto Health Care System
3801 Miranda Ave, Palo Alto, CA 94304
Date JUNE 14, 2013
Checked CW
Drawn WK

VA Project Number:
640-385
Building Number:
105
Drawing No.
A0102



- GENERAL NOTES**
1. ENCLOSE ALL EXPOSED DUCTS, PIPES, CONDUITS, ETC. IN FINISHED SPACE WITH CONSTRUCTION AND FINISH TO MATCH ADJACENT CONSTRUCTION UNO.
 2. DO NOT DETERMINE DIMENSIONS AND SIZE OF THE GRAPHIC REPRESENTATIONS SHOWN ON THE DRAWINGS BY USING MEASURING DEVICES (DO NOT "SCALE"). RELY ON THE NUMERIC DIMENSIONS SHOWN ON THE DRAWINGS FOR MEASUREMENT.
 3. DIMENSIONS ARE TAKEN FROM CENTERLINE OF STRUCTURE, FACE OF CONCRETE OR FINISHED FACE OF PARTITIONS UNO. SEE PARTITION TYPES SHEETS (A1000 SERIES) FOR PARTITION THICKNESS AND MATERIALS.
 4. DIMENSIONS TO DOOR IS TO THE CENTERLINE OF DOOR, TYPICAL.
 5. GC SHALL PROVIDE BACKING FOR WALL MOUNTED SHELVING (VFW), REFER TO EQUIPMENT & FURNITURE PLAN FOR WALL MOUNTED SHELVING LOCATION.
- KEY NOTES**
- 1 221400 COMBINED ROOF DRAIN WITH OVERFLOW
 - 2 075419 MINIMUM 6" RIGID INSULATION TAPERED TO DRAIN
 - 3 075419 SINGLE PLY "COOL ROOF"
 - 4 051200 COLUMN SPACE EXTENSIONS FOR PHASE 2 FUTURE EXPANSION, SEE STRUCTURAL DRAWINGS. SEE 16/A0421 FOR ROOFING DETAIL
 - 5 074213 METAL MECHANICAL SCREEN WITH STL. TUBE SUPPORTS
 - 6 076200 PAINTED MTL. COPING CAP
 - 7 076200 TWO PIECE COUNTER-FLASHING CONT. AT PARAPET
 - 8 081113 HOLLOW METAL DOOR AND FRAME PAINTED TO MATCH ADJACENT MATERIAL
 - 9 079513 SEISMIC JOINT COVER
 - 10 EPDM WALK PADS
 - 11 CROSSOVER
 - 12 EXHAUST FAN. SEE MECHANICAL DWGS
 - 13 HATCH INDICATE RE-ROOFING FOR (N) EXHAUST FAN INSTALLATION.

LEGEND

ISSUE FOR BID