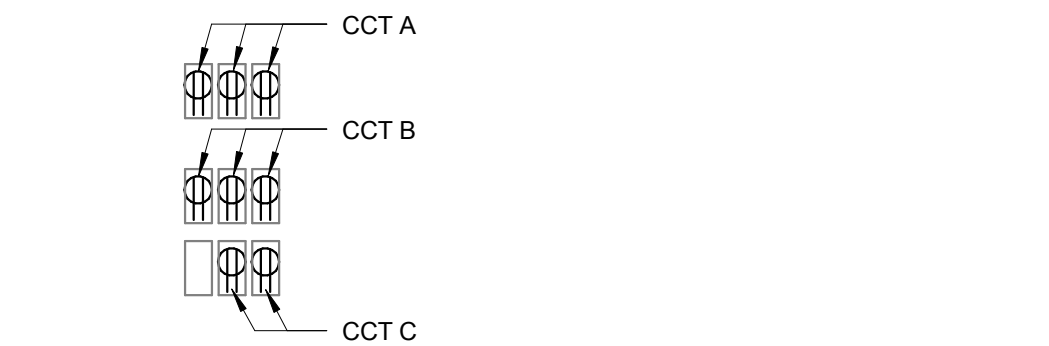
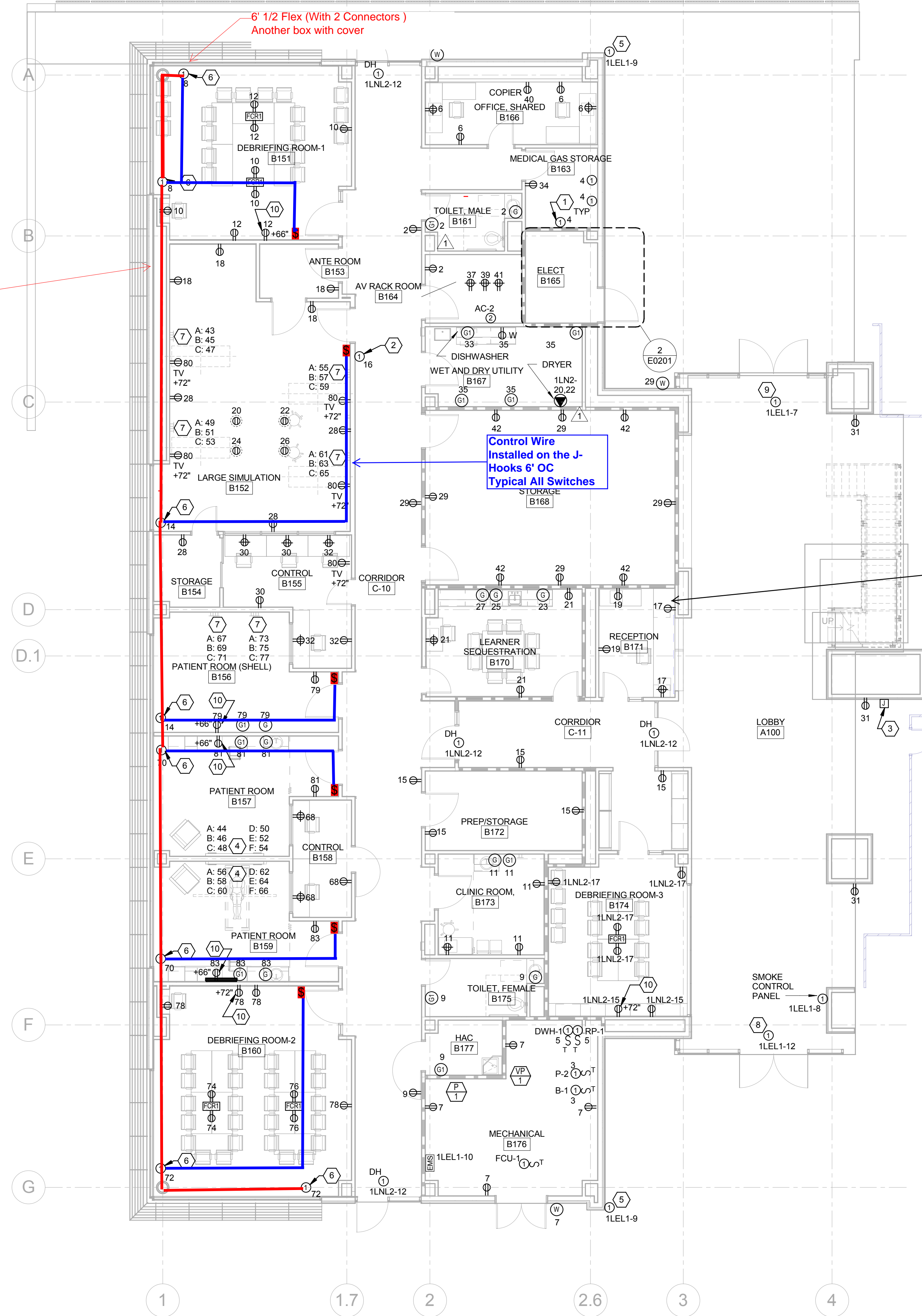
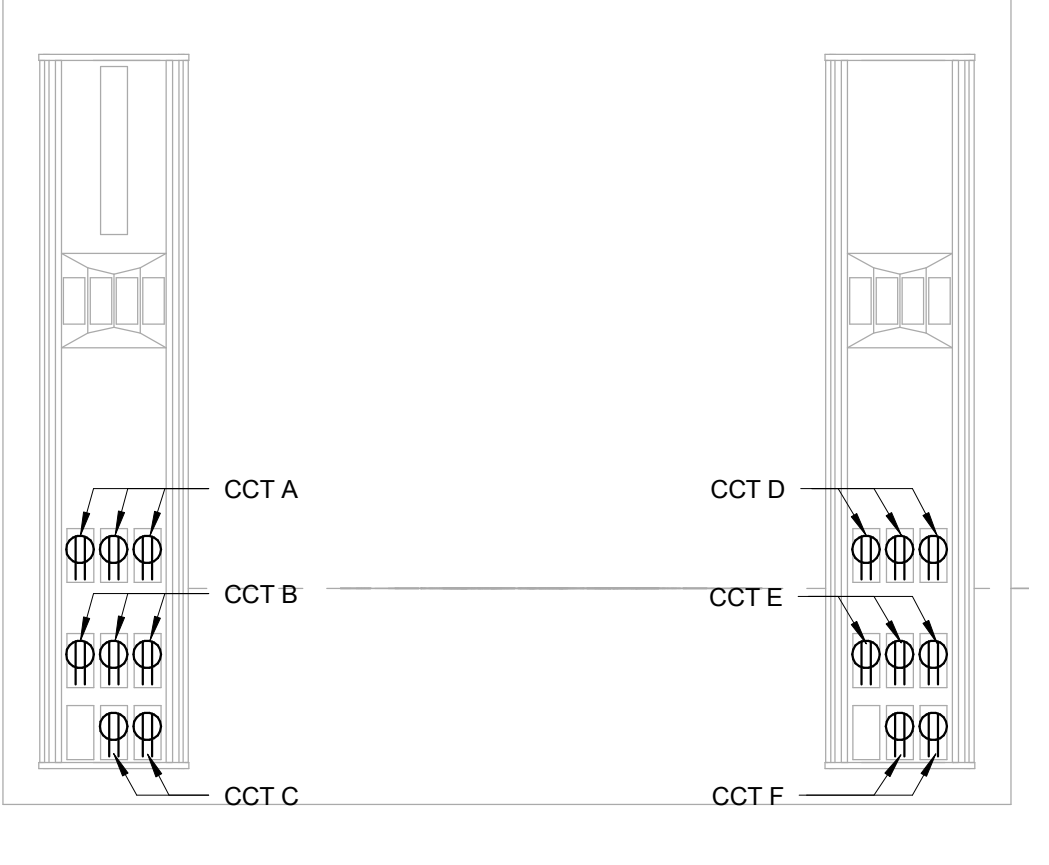


A
B
C
D
E
F

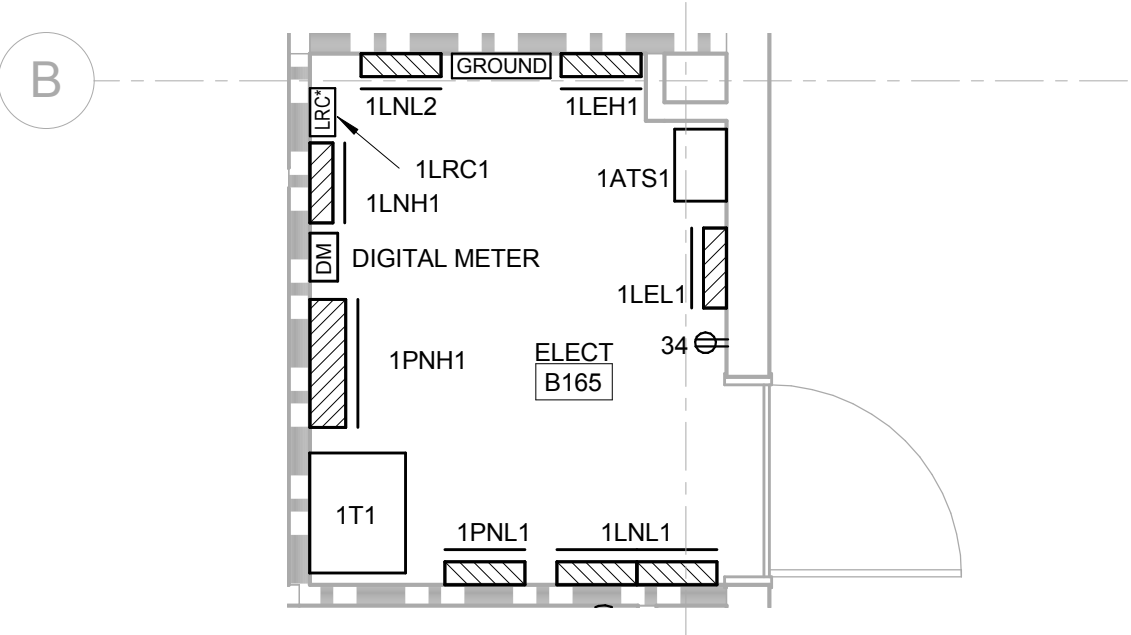
three inches = one foot
one and one-half inches = one foot
one inch = one foot
three-quarters inch = one foot
one-half inch = one foot
three-eighths inch = one foot
one-quarter inch = one foot
one-eighth inch = one foot



4
TYPICAL HEADWALL ELEVATION- WALL MOUNTED DEVICES
NTS



3
TYPICAL HEADWALL ELEVATION- COLUMN MOUNTED DEVICES
NTS



2
ENLARGED ELECTRICAL RM B165
1/4" = 1'-0"

GENERAL NOTES

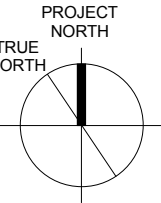
KEY NOTES

1. CONNECTIONS FOR GAS MANIFOLDS. COORDINATE WITH EQUIPMENT MANUFACTURER.
2. CONNECTION FOR GAS ALARM PANEL.
3. PROVIDE J-BOX AND 3/4" TO ACCESSIBLE CEILING SPACE FOR DIRECTORY DISPLAY. CONFIRM EXACT MOUNTING HEIGHT WITH EQUIPMENT SUPPLIER.
4. COLUMN MOUNTED DEVICES. SEE 3/E0201 FOR TYPICAL CIRCUIT DESIGNATIONS. CIRCUIT ASSIGNMENTS ARE SHOWN ON FLOOR PLANS. (EXAMPLE: A-13 IS TOP LEFT (3) RECEPTACLES WIRED TO CIRCUIT 13 ON PANEL 1LN1.1) SEE DETAIL 1/A0801 FOR MORE INFORMATION.
5. CONNECTION TO EXTERIOR CCTV CAMERA. COORDINATE EXACT LOCATION WITH SECURITY VENDOR.
6. CONFIRM EXACT LOCATION OF MECHO-SHADE IN THE FIELD.
7. WALL MOUNTED DEVICES. SEE 4/E0201 FOR TYPICAL CIRCUIT DESIGNATIONS. CIRCUIT ASSIGNMENTS ARE SHOWN ON FLOOR PLANS. (EXAMPLE: A-13 IS TOP (3) RECEPTACLES WIRED TO CIRCUIT 13 ON PANEL 1LN1.1) SEE DETAIL 5/A0801 FOR MORE INFORMATION.
8. LOCATION OF SOUTH DOOR HARDWARE. CONTINUE CIRCUIT TO NEW DOOR HARDWARE ON EXISTING DOOR AS SHOWN BY KEYED NOTE #10 ON SHEET E0101.
9. LOCATION OF NORTH DOOR HARDWARE. CONTINUE CIRCUIT TO NEW DOOR HARDWARE ON EXISTING DOOR AS SHOWN BY KEYED NOTE #11 ON SHEET E0101.
10. COORDINATE EXACT LOCATION WITH TV MOUNTING BRACKET.

BRANCH CIRCUIT NOTES

1. UNLESS NOTED OTHERWISE, WIRE ALL 208/120V DEVICES TO PANELBOARD 1LN1.1 LOCATED IN ELEC RM B165.
2. UNLESS NOTED OTHERWISE, WIRE ALL 480/277V DEVICES TO PANELBOARD 1LNH1 LOCATED IN ELEC RM B165.

LEGEND



ISSUE FOR CONSTRUCTION

<div>9</div> <div>8</div> <div>7</div> <div>6</div> <div>5</div> <div>4</div> <div>3</div> <div>2</div> <div>1</div> <div>ADDENDUM 1</div> <div>Revisions</div>		CONSULTANTS:		Seals and Signatures		ARCHITECT/ENGINEERS:		Drawing Title		Project Title		VA Project Number:	
						CANNON DESIGN		LEVEL 01 POWER PLAN		VA SIMULATION CENTER		640-385	
						201 Mission Street, Suite 2400, San Francisco, California 94105 415.243.4170		Approved: Project Director		Location		Building Number:	
						Baltimore ■ Boston ■ Buffalo ■ Calgary ■ Chicago		Approver		Veterans Affairs Palo Alto Heath Care System		105	
						Houston ■ Los Angeles ■ Mumbai ■ New York ■ Phoenix				3801 Miranda Ave, Palo Alto, CA 94304		Drawing No.	
						St. Louis ■ San Francisco ■ Shanghai ■ Toronto				Date		E0201	
						Vancouver ■ Victoria ■ Washington DC				SEP 26, 2014		Checked	
										R/JG		Drawn	
										JSS		Department of Veterans Affairs	

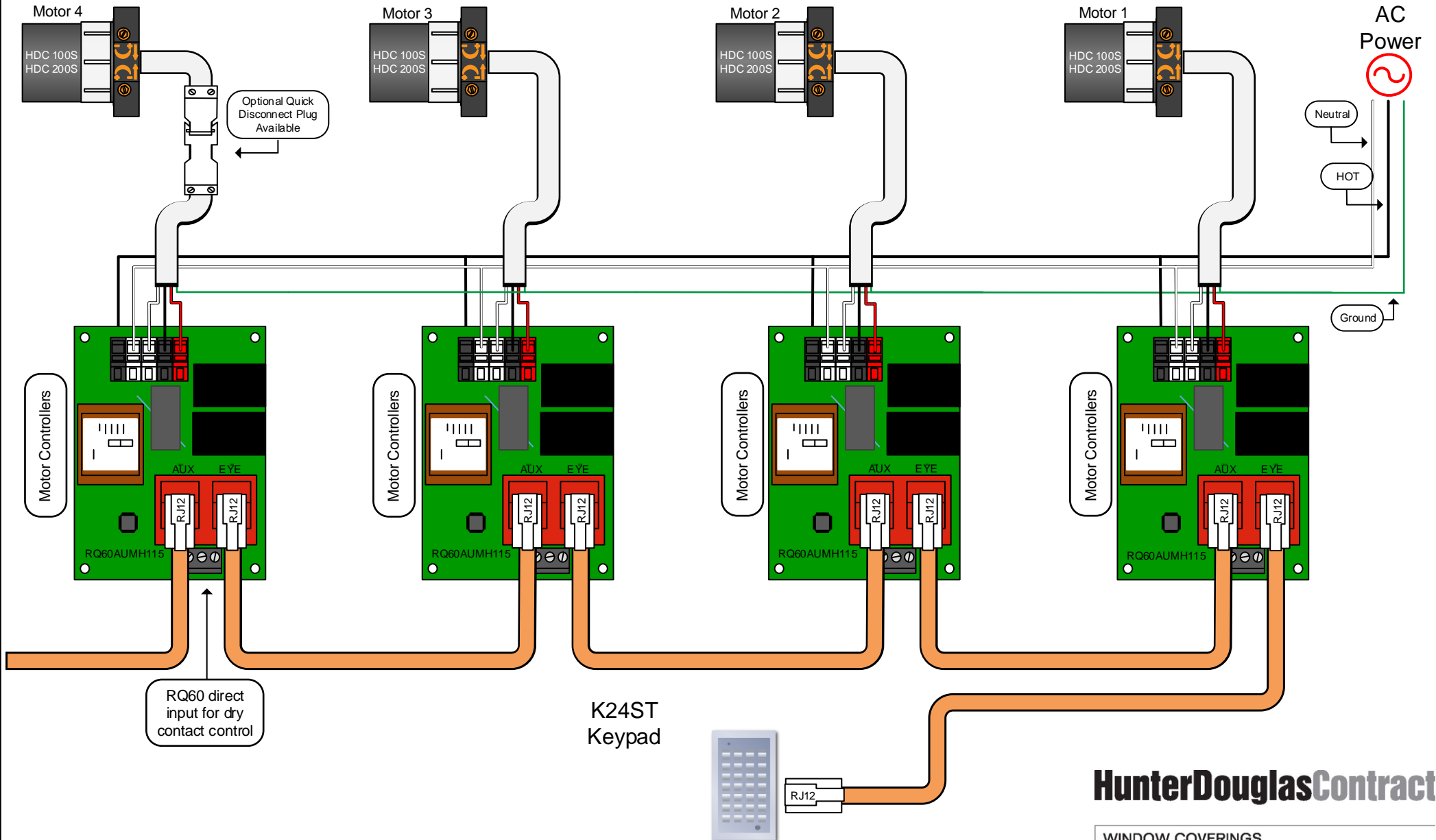
RQ60AUMH115 MOTOR CONTROLLERS IN A CUSTOM PANEL



JC CABLE 6P6C/ RJ12 conductor for RQ/RP Bus – 50ft long or CAT5e (CAT5e will need to be re-pinned)

NEUTRAL
HOT DIRECTIONAL
HOT DIRECTIONAL
GROUND

14/4 ELECTRICAL WIRE 120 VAC



HunterDouglasContract

WINDOW COVERINGS



OVERLAY0070



OVERLAY0071



OVERLAY0072



OVERLAY0073



OVERLAY0074



OVERLAY0012

K1ST, K2ST, K3ST, K4ST, K5ST, K6ST

Keypad (Wall Switch) for operating RPs or RQs on channels 1 through 6. Buttons can be "Selectable" and "Trainable" to any of the RP commands. Includes built-in IR Eye. No programming or ALL functions. Up to twelve buttons with LED feedback. Features screw-less cover plate.

Case color: White.

Keypad and overlay sold together.

For example, the K1ST (one channel) will be sold with OVERLAY0070, the overlay for one channel.



ESI PART #s:

K1ST (includes OVERLAY0070)

K2ST (includes OVERLAY0071)

K3ST (includes OVERLAY0072)

K4ST (includes OVERLAY0073)

K5ST (includes OVERLAY0074)

K6ST (includes OVERLAY0012)

K12ST, K24ST

Keypad (Wall Switch) for operating RPs or RQs on either channels 1 through 12 and ALL, or channels 1 through 24 and ALL. Twenty-eight buttons with "Shift" function (24 channel only) and LED feedback. Buttons can be "Selectable" and "Trainable" to any of the RP commands. Includes built-in IR Eye. Features screw-less cover plate.

Case color: White.

Keypad and overlay sold together.

ESI PART #s:

K12ST (includes OVERLAY0002)

K24ST (includes OVERLAY0001)



OVERLAY0002



OVERLAY0001



K1ST RF 433, K2ST RF 433, K3ST RF 433, K4ST RF 433, K5ST RF 433, K6ST RF 433



Keypad (Wall Switch) for operating RPs or RQs on channels 1 through 6. Up to twelve buttons with LED feedback. Buttons can be "Selectable" and "Trainable" to any of the RP commands. Battery operated for wireless radio installation. No programming or ALL functions. Includes RFTM and screw-less cover plate.
NOTE: transmits only to the RR433.

Case color: White.

Keypad and overlay sold together.

For example, the K1ST RF 433 (one channel) will be sold with OVERLAY0070, the overlay for one channel.

ESI PART #s:

K1ST RF 433 (includes OVERLAY0070)

K2ST RF 433 (includes OVERLAY0071)

K3ST RF 433 (includes OVERLAY0072)

K4ST RF 433 (includes OVERLAY0073)

K5ST RF 433 (includes OVERLAY0074)

K6ST RF 433 (includes OVERLAY0012)



OVERLAY0070



OVERLAY0071



OVERLAY0072



OVERLAY0073



OVERLAY0074



OVERLAY0012

K12ST RF 433, K24ST RF 433



Keypad (Wall Switch) for operating RPs or RQs on either channels 1 through 12 and ALL, or channels 1 through 24 and ALL. Twenty-eight buttons with "Shift" function (24 channel only) and LED feedback. Buttons can be "Selectable" and "Trainable" to any of the RP commands. Battery operated for wireless radio installation. Includes RFTM and screw-less cover plate.
NOTE: transmits only to the RR433.

Case color: White.

Keypad and overlay sold together.

ESI PART #s:

K12ST RF 433 (includes OVERLAY0002)

K24ST RF 433 (includes OVERLAY0001)



OVERLAY0002



OVERLAY0001