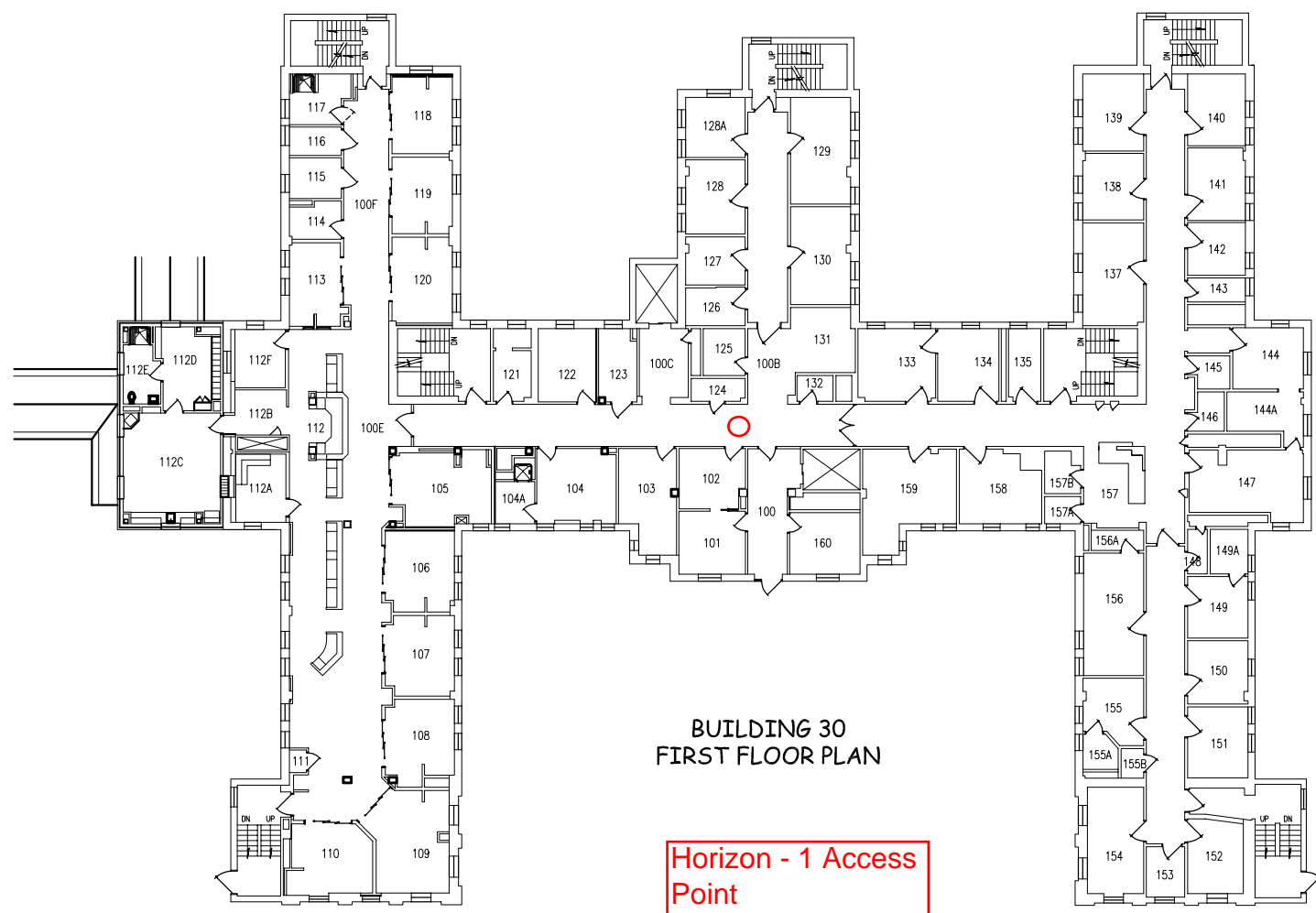
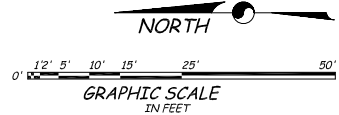


A  
three inches = one foot  
 B  
one and one-half inches = one foot  
 C  
one inch = one foot  
 D  
three quarters inch = one foot  
 E  
one-half inch = one foot  
 F  
three-eighths inch = one foot  
 one-quarter inch = one foot  
 one-eighth inch = one foot



**BUILDING 30  
FIRST FLOOR PLAN**

**Horizon - 1 Access  
Point  
Closet - Rm. 126**



Updated per: <i>MM Project in Special Care Unit</i> Location: <i>CH-200</i> Revision: <i>1-18</i> Date:		Drawing Title <b>First Floor Plan</b>		Project Title Building Number: <b>30</b> Checked: <input type="checkbox"/> Drawn: <input type="checkbox"/>		Date: Project No.: Drawing No.: <b>S-030-1</b> Dep. Of:		
Approved: Director, Medical Center		Location: <i>Chillicothe, Ohio</i>		Approved: Chief, Engineering Service		Approved: <i>Department of Veterans Affairs</i>		