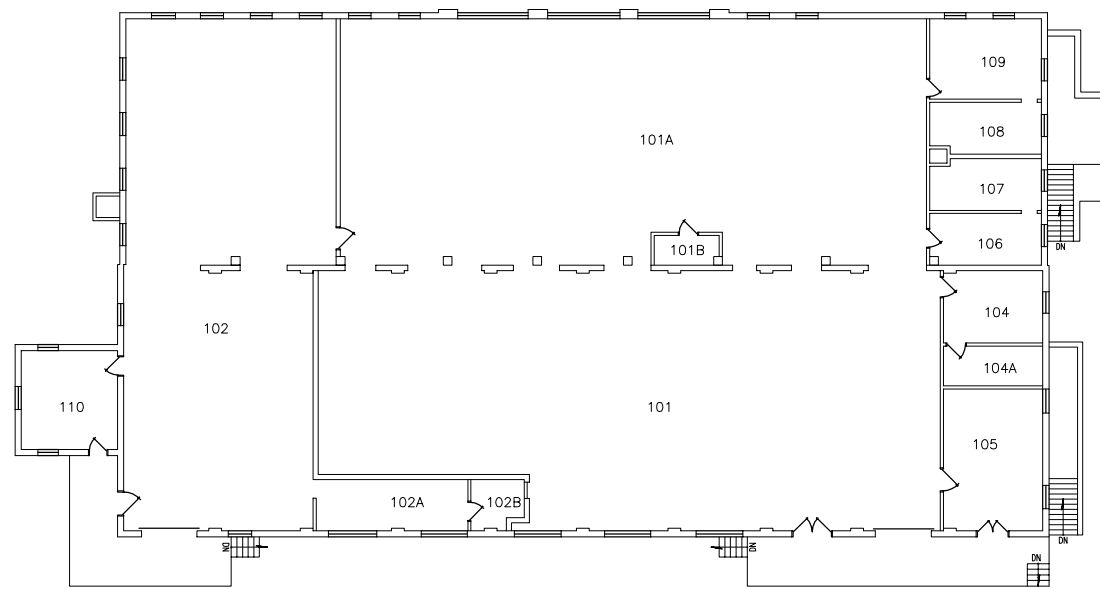
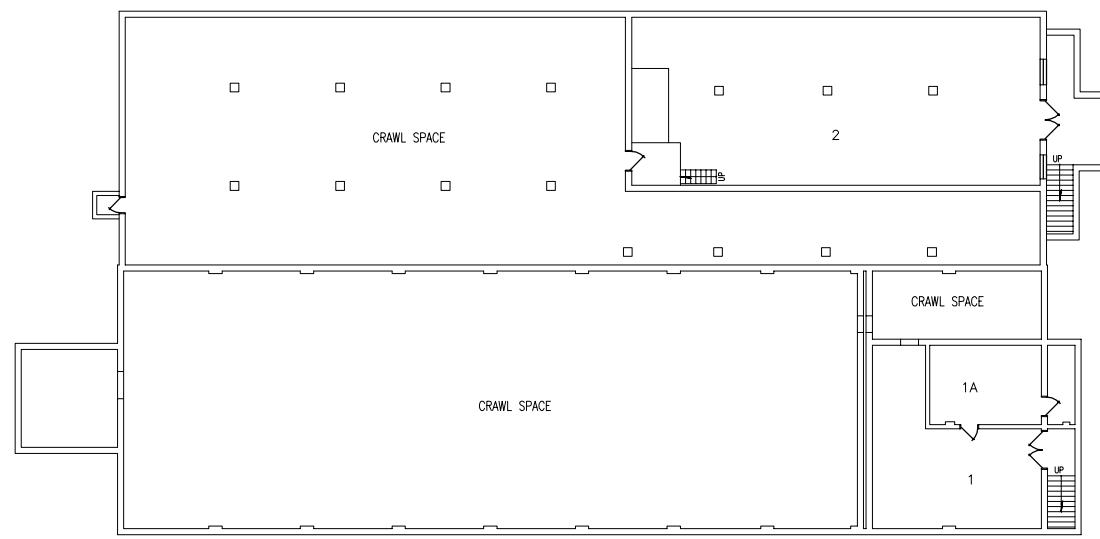


one-eighth inch = one foot
one-quarter inch = one foot
three-eighths inch = one foot
one-half inch = one foot
one inch = one foot
one and one-half inches = one foot
three inches = one foot



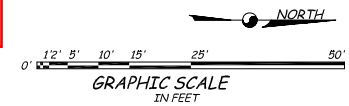
BUILDING 25
FIRST FLOOR PLAN


Horizon - No
Access Points



BUILDING 25
BASEMENT FLOOR PLAN

Horizon - No
Access Points



<div>Updated Revisions</div>		<div>5-05 Date</div>								Drawing Title		Project Title		Date				
										Floor Plans				Project No.				
										Approved: CHM, Engineering Service		Building Number 25		Checked	Drawn		DRAWING NO. S-025-ALL	
										Approved: Director, Medical Center		Location Chillicothe, Ohio		Dep. of				