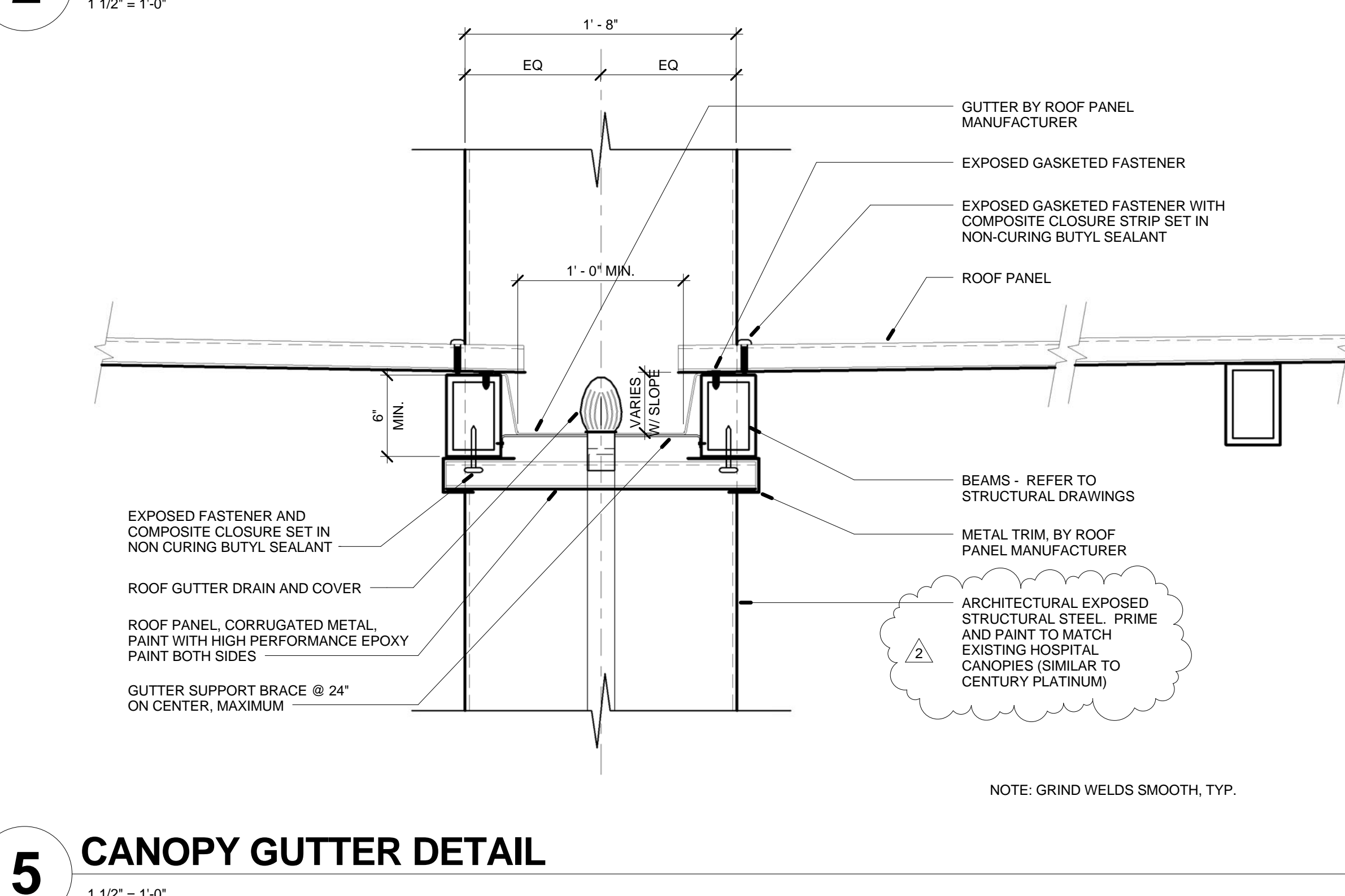
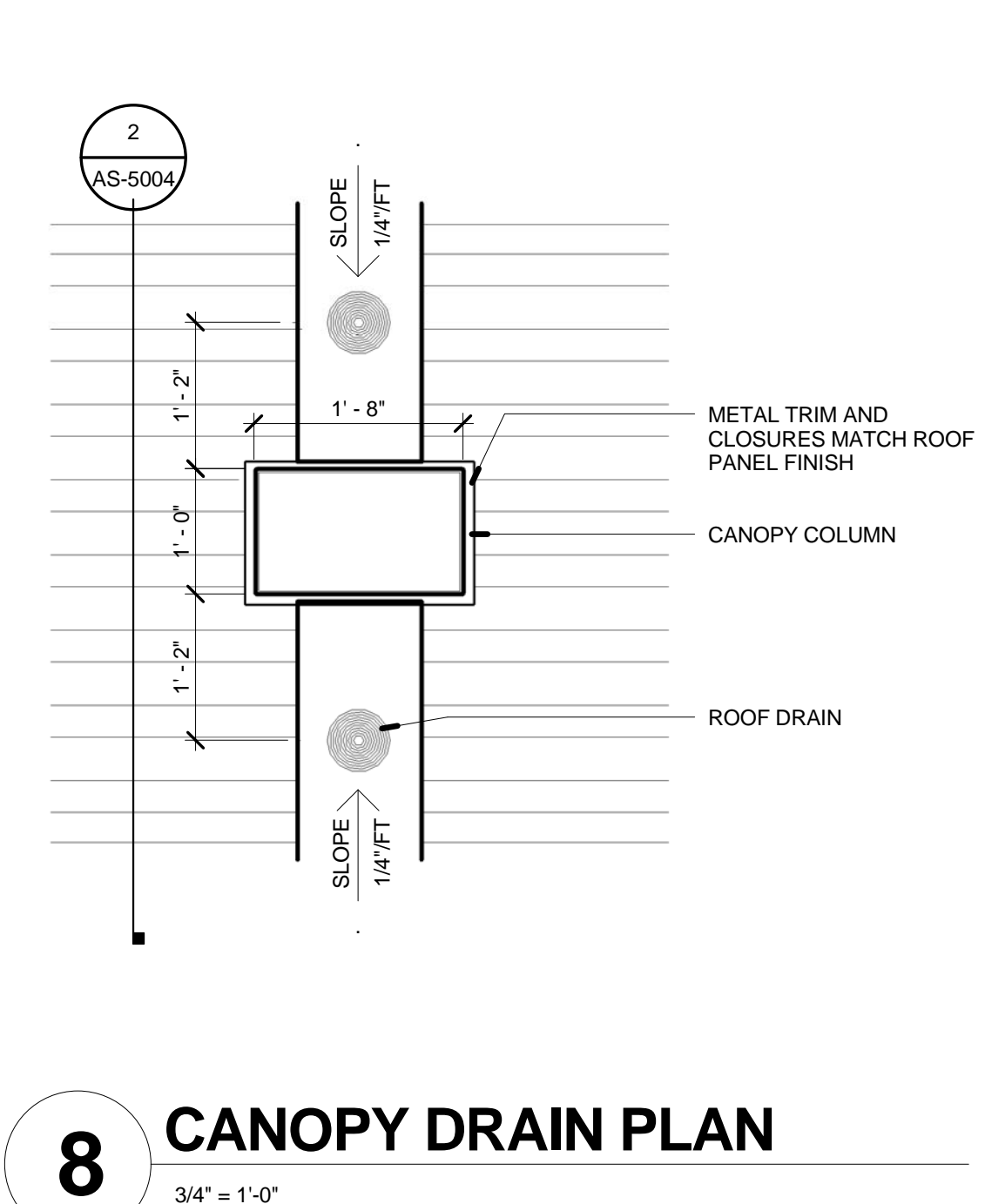


NOTE: GRIND WELDS SMOOTH, TYPE





NOTE: GRIND WELDS SMOOTH, TYPE


$$3/4" = 1'-0"$$

CONSULTANTS:

CIVIL:	SLATER HANIFAN GROUP, 5740 S. ARVILLE ST. #216, LAS VEGAS, NV 89118
LANDSCAPE:	J W ZUNINO LANDSCAPE ARCHITECTURE, 3191 S. JONES BLVD, LAS VEGAS, NV 89146
MEP:	JBA CONSULTING ENGINEERING, 5155 WEST PATRICK LANE, LAS VEGAS, NV 89118
STRUCTURAL:	DEGENKOLB ENGINEERING, 235 MONTGOMERY STREET, SUITE 500, SAN FRANCISCO CA 94104
GEOTECHNICAL:	NINYO AND MOORE, 6700 PARADISE ROAD, SUITE E, LAS VEGAS, NV 89119
FIRE & LIFE SAFETY:	LASALLE ENGINEERING, 1000 YORK ROAD, WILLOW GROVE, PA 19090

Drawing Title Site Details	Project Title VA Medical Center - PHASE V, Administration Bldg. & Education Ctr. Addition			Project Number 593CA2202	Office of Construction and Facilities Management
	Scale As Indicated	Building Number 6			
Approved: Project Director 	Location North Las Vegas, NV			Drawing Number AS-5004	 Department of Veterans Affairs
	Date June 15, 2012	Checked RE	Drawn JZA	96 of 512	