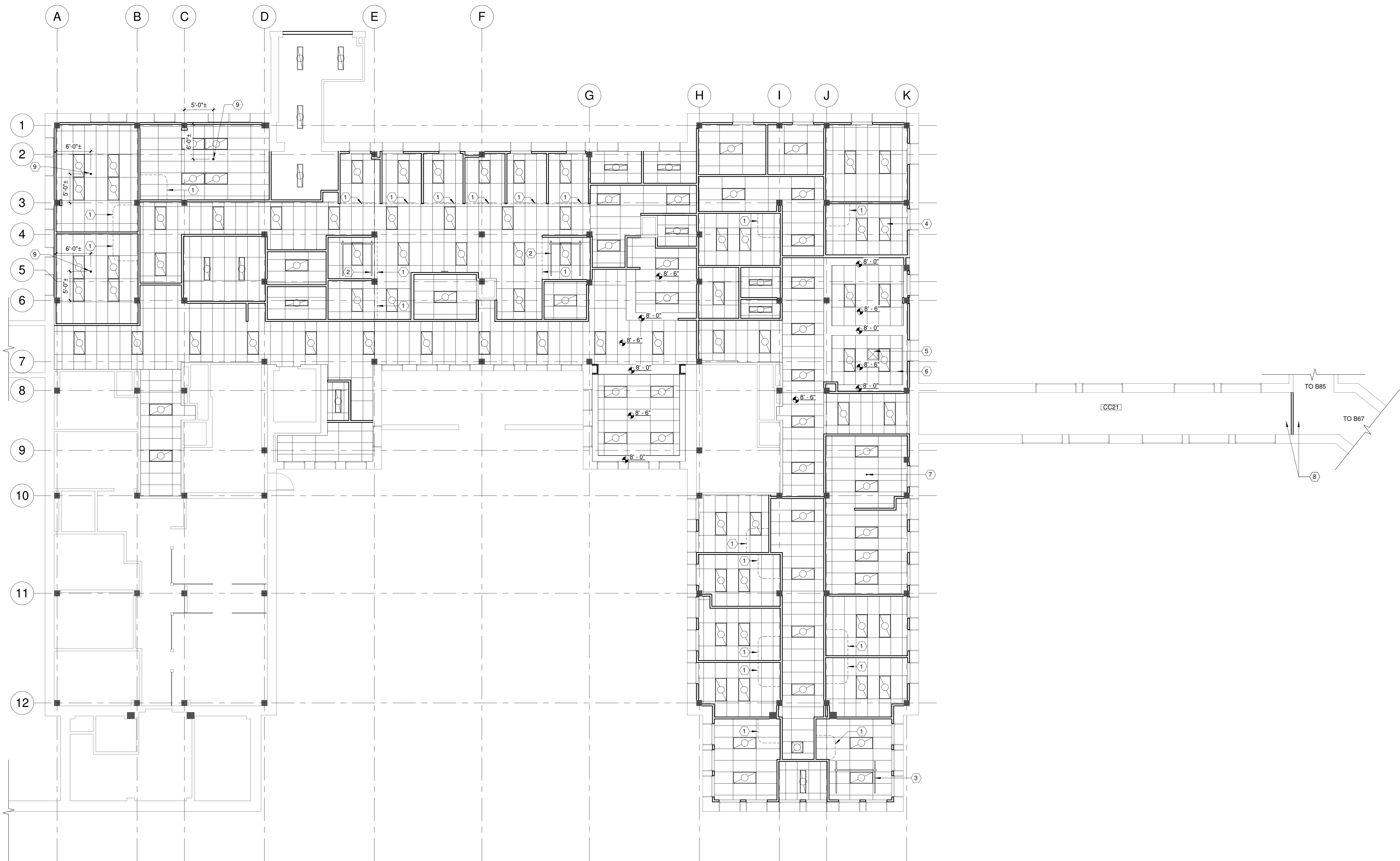


ONE EIGHTH	4		
0			

- 1 CUBICLE CURTAIN AND CEILING-MOUNTED TRACK
- 2 CEILING-MOUNTED PATIENT LIFT (FCOI)
- 3 CEILING-MOUNTED PATIENT LIFT (FCOI)
- 4 LIGHT FIXTURE (TYP)
- 5 HVAC GRILLE (TYP)
- 6 SUSPENDED ACoustICAL CEILING TILE (TYP) - SEE DETAIL 4/42.1
- 7 SPRINKLER HEAD OR OTHER CEILING-MOUNTED DEVICE TO BE LOCATED PER GENERAL SHEET NOTE B
- 8 REMOVE (E) SUSPENDED ACoustICAL CEILING SYSTEM AS REQUIRED TO INSTALL TEMPORARY BARRIER. TEMPORARILY RE-INSTALL (E) CEILING TO FIRE BARRIER ON SOUTH SIDE OF FIRE BARRIER. AFTER TEMPORARY BARRIER IS REMOVED, RE-INSTALL (E) CEILING
- 9 MEDICAL OXYGEN PORT; CEILING LOCATION



NO.	DESCRIPTION	DATE
REVISIONS		DATE



ZGA.

Architects and Planners, Chartered
408 E. Parkcenter Blvd, Suite 205, Boise Idaho 83706

ZGA PROJECT NO. 1657.01

DRAWING TITLE
FIRST FLOOR REFLECTED CEILING PLAN - B27
APPROVED: CHIEF OF FACILITY MANAGEMENT SERVICE
APPROVED: MEDICAL CENTER DIRECTOR

PROJECT TITLE		
RENOVATE B27 FIRST FLOOR FOR AMBULATORY CARE		
BUILDING NUMBER	CHECKED BY	DRAWN BY
27	LA/SCT	MT
LOCATION		
VAMC BOISE, IDAHO		

DATE
DEC 7, 2017

PROJECT NO.
531-16-102

DRAWING NO.
A2.1

DWG 11 OF 67



FINAL CONTRACT DRAWINGS