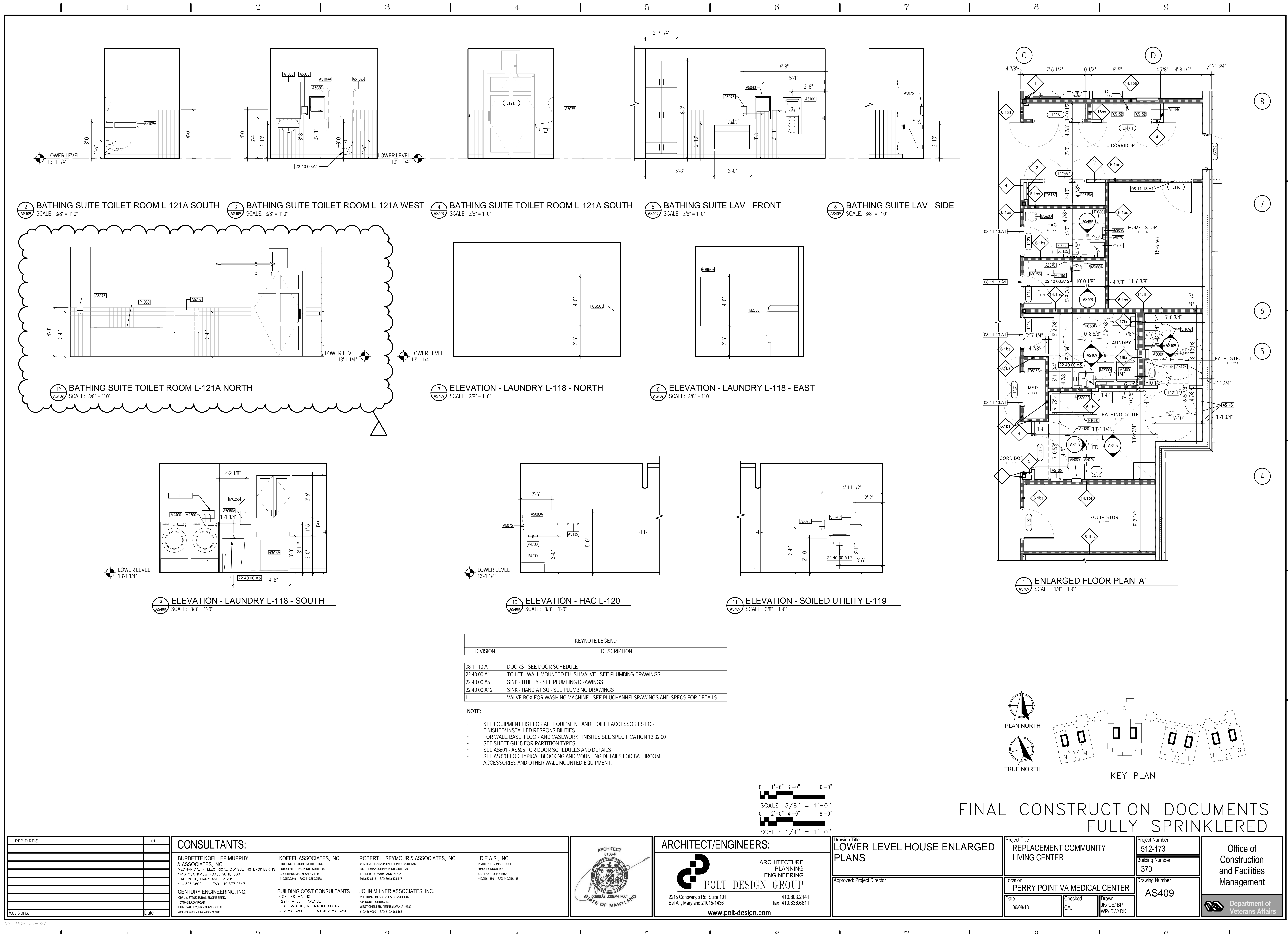


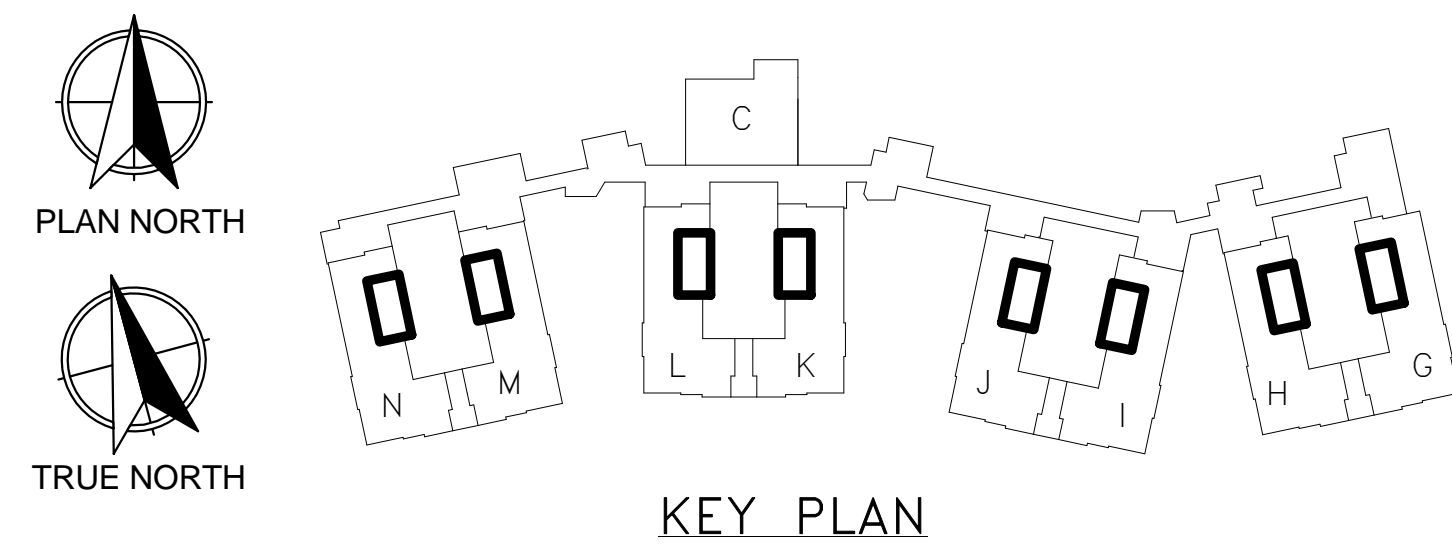
three inches = one foot
one and one half inches = one foot
one inch = one foot
three quarters inch = one foot
one half inch = one foot
three eighths inch = one foot
one quarter inch = one foot
one eighth inch = one foot



KEYNOTE LEGEND	
DIVISION	DESCRIPTION
08 11 13 A1	DOORS - SEE DOOR SCHEDULE
22 40 00 A1	TOILET - WALL MOUNTED FLUSH VALVE - SEE PLUMBING DRAWINGS
22 40 00 A5	SINK - UTILITY - SEE PLUMBING DRAWINGS
22 40 00 A12	SINK - HAND AT SU - SEE PLUMBING DRAWINGS
L	VALVE BOX FOR WASHING MACHINE - SEE PLUMBING DRAWINGS AND SPECS FOR DETAILS

- NOTE:
- SEE EQUIPMENT LIST FOR ALL EQUIPMENT AND TOILET ACCESSORIES FOR FINISHED/ INSTALLED RESPONSIBILITIES.
 - FOR WALL, BASE, FLOOR AND CASEWORK FINISHES SEE SPECIFICATION 12.32.00
 - SEE SHEET G115 FOR PARTITION TYPES
 - SEE AS601 - AS605 FOR DOOR SCHEDULES AND DETAILS
 - SEE AS 501 FOR TYPICAL BLOCKING AND MOUNTING DETAILS FOR BATHROOM ACCESSORIES AND OTHER WALL MOUNTED EQUIPMENT.

0 1'-6" 3'-0" 6'-0"
SCALE: 3/8" = 1'-0"
0 2'-0" 4'-0" 8'-0"
SCALE: 1/4" = 1'-0"



FINAL CONSTRUCTION DOCUMENTS FULLY SPRINKLERED

REBID RFS	01	CONSULTANTS: BURDETTE KOEHLER MURPHY & ASSOCIATES, INC. MECHANICAL / ELECTRICAL CONSULTING ENGINEERING 1416 CLARKVIEW ROAD, SUITE 500 BALTIMORE, MARYLAND 21209 410.323.0600 - FAX 410.377.2543 CENTURY ENGINEERING, INC. CIVIL & STRUCTURAL ENGINEERING 10710 CLARKVIEW ROAD HUNT VALLEY, MARYLAND 21031 443.589.2400 - FAX 443.589.2401	KOFFEL ASSOCIATES, INC. FIRE PROTECTION ENGINEERING 8815 CENTRE PARK DR., SUITE 200 COLUMBIA, MARYLAND 21045 410.750.0246 - FAX 410.750.2588 BUILDING COST CONSULTANTS COST ESTIMATING 12917 - 30TH AVENUE PLATTSBOROUGH, NEBRASKA 68048 402.298.8260 - FAX 402.298.8290	ROBERT L. SEYMOUR & ASSOCIATES, INC. VERTICAL TRANSPORTATION CONSULTANTS 182 THOMAS JOHNSON DR., SUITE 200 FREDERICK, MARYLAND 21702 301.662.8112 - FAX 301.662.8117 JOHN MILNER ASSOCIATES, INC. CULTURAL RESOURCES CONSULTANT 535 NORTH CHURCH ST. WEST CHESTER, PENNSYLVANIA 19380 610.434.9000 - FAX 610.434.8448	I.D.E.A.S., INC. PLUMBING CONSULTANT 8605 CHORRON RD. KIRTLAND, OHIO 44094 440.254.1985 - FAX 440.254.1981	ARCHITECT/ENGINEERS: POLT DESIGN GROUP ARCHITECTURE PLANNING ENGINEERING 2215 Conowingo Rd., Suite 101 Bel Air, Maryland 21015-1436 410.803.2141 fax 410.836.8611 www.polt-design.com	Drawing Title LOWER LEVEL HOUSE ENLARGED PLANS Approved: Project Director	Project Title REPLACEMENT COMMUNITY LIVING CENTER Location PERRY POINT VA MEDICAL CENTER Date 06/08/18 Checked CAJ Drawn JKI/CE/BP WPI/DW/DK	Project Number 512-173 Building Number 370 Drawing Number AS409	Office of Construction and Facilities Management Department of Veterans Affairs