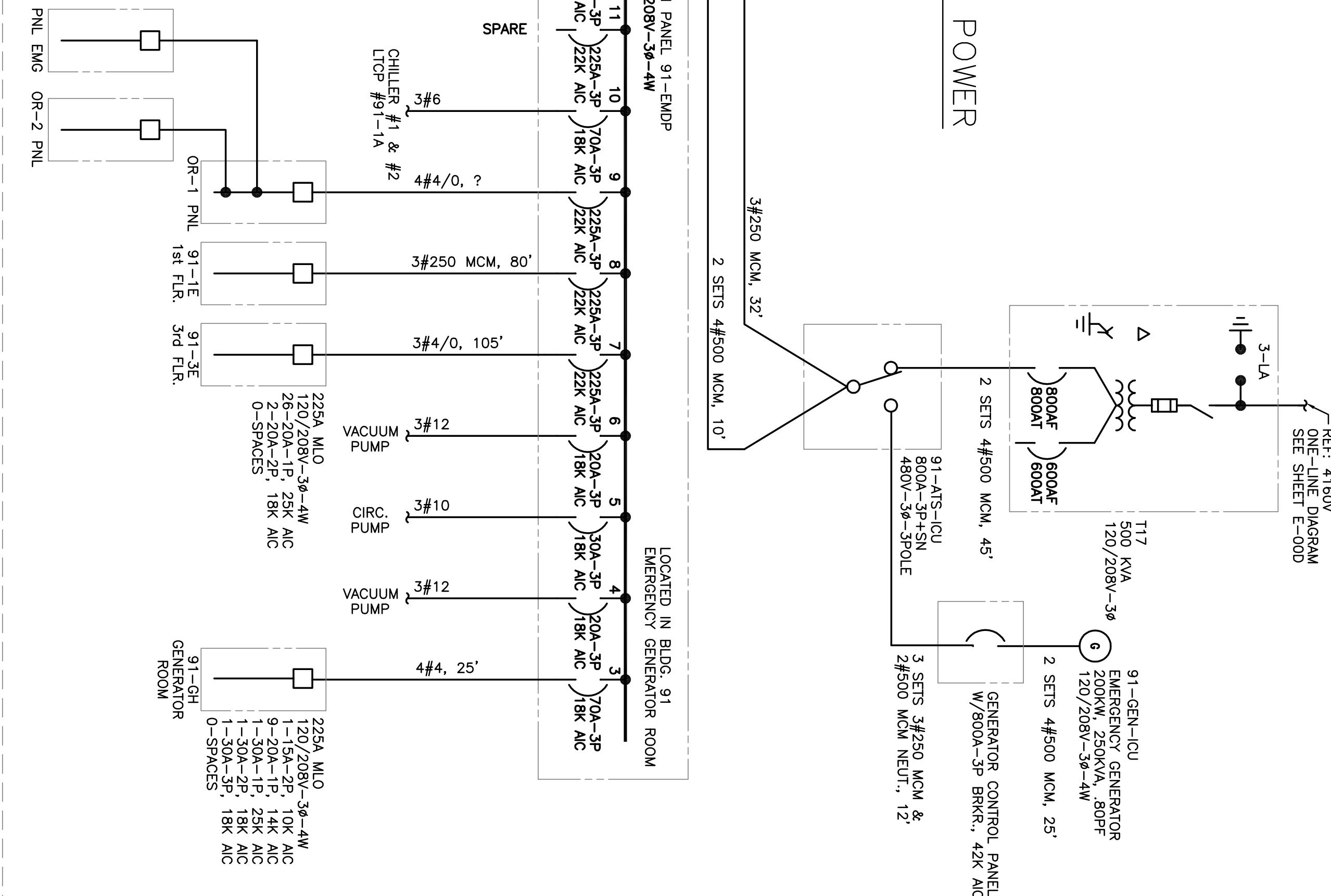


T17-BLDG 91 ICU EMERGENCY POWER




T29-BUILDING 9

Revisions	Date

--	--

Drawing Title T21 BLDG 91 XFMR T17 BLDG 91 ICU XFMR T17 BLDG 91 ICU ELECTRICAL ONE - LINE	Project Title VA LEAVENWORTH ELECTRICAL STUDY
Approved: Division Chief	Building Number 91
Approved: Service Director	Checked PG
	From JG
	Location DDE VAMC LEAVENWORTH, KANSAS

Date	01/30/09
Project No.	4611.0150
DRAWING NO.	E-91
Dwg. 25 of 39	



Office of Facilities

Veterans Administration

GENERAL COMMENTS:

1. FUSE SIZES NOT SHOWN ON THE ONE-LINE DIAGRAM WILL REQUIRE POWER OUTAGES FOR FIELD VERIFICATION, OR REFER TO DWG. E-000 FOR MEDIUM VOLTAGE DETAIL