

three inches = one foot

one and one half inches = one foot

one inch = one foot

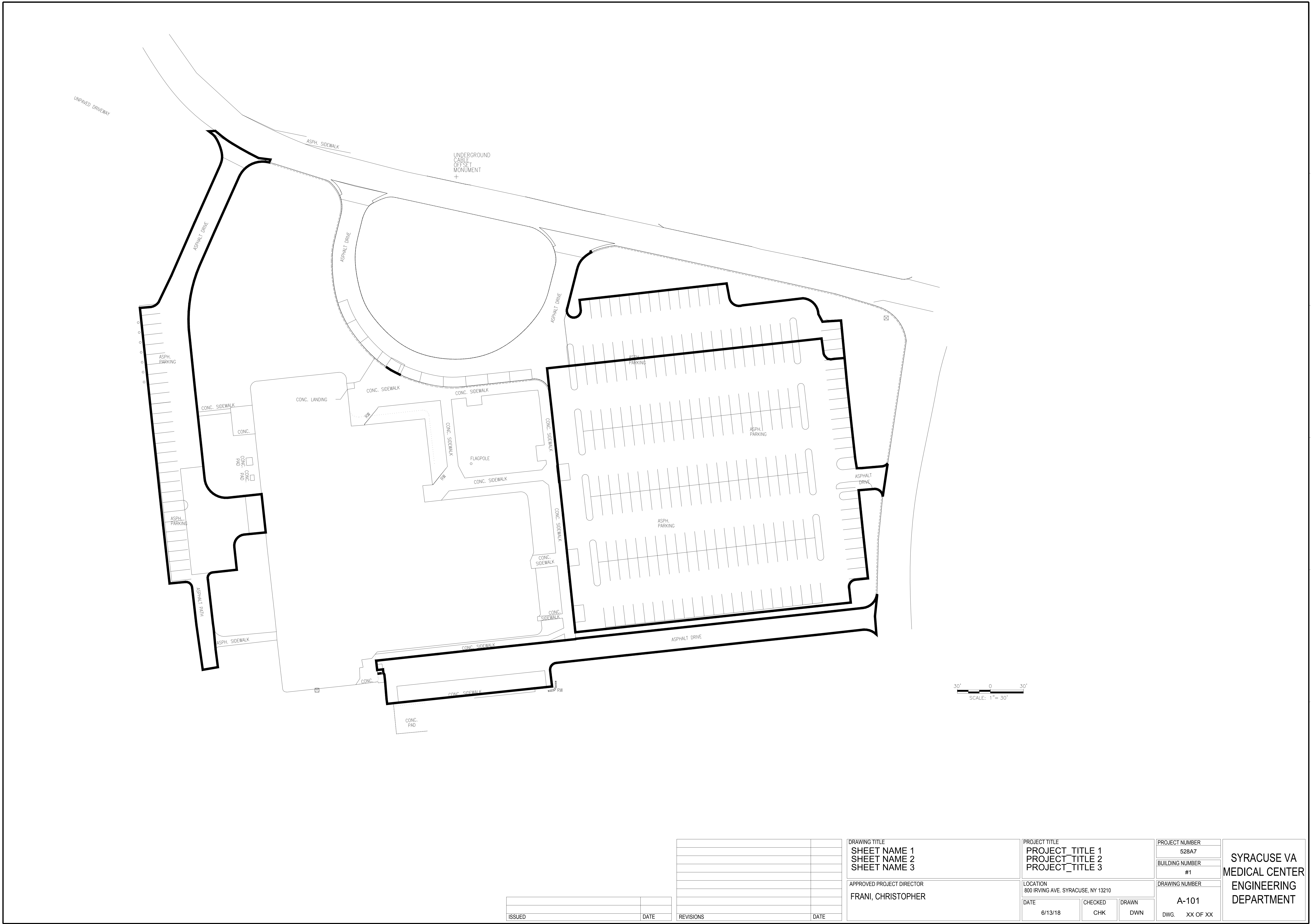
three quarters inch = one foot

one half inch = one foot

three eighths inch = one foot

one quarter inch = one foot

one eighth inch = one foot



ISSUED	DATE

REVISIONS	DATE

DRAWING TITLE
SHEET NAME 1
SHEET NAME 2
SHEET NAME 3
APPROVED PROJECT DIRECTOR
FRANI, CHRISTOPHER

PROJECT TITLE
PROJECT_TITLE 1
PROJECT_TITLE 2
PROJECT_TITLE 3
LOCATION
800 IRVING AVE. SYRACUSE, NY 13210
DATE
6/13/18
CHECKED
CHK
DRAWN
DWN

PROJECT NUMBER
528A7
BUILDING NUMBER
#1
DRAWING NUMBER
A-101
DWG. XX OF XX

SYRACUSE VA  
MEDICAL CENTER  
ENGINEERING  
DEPARTMENT