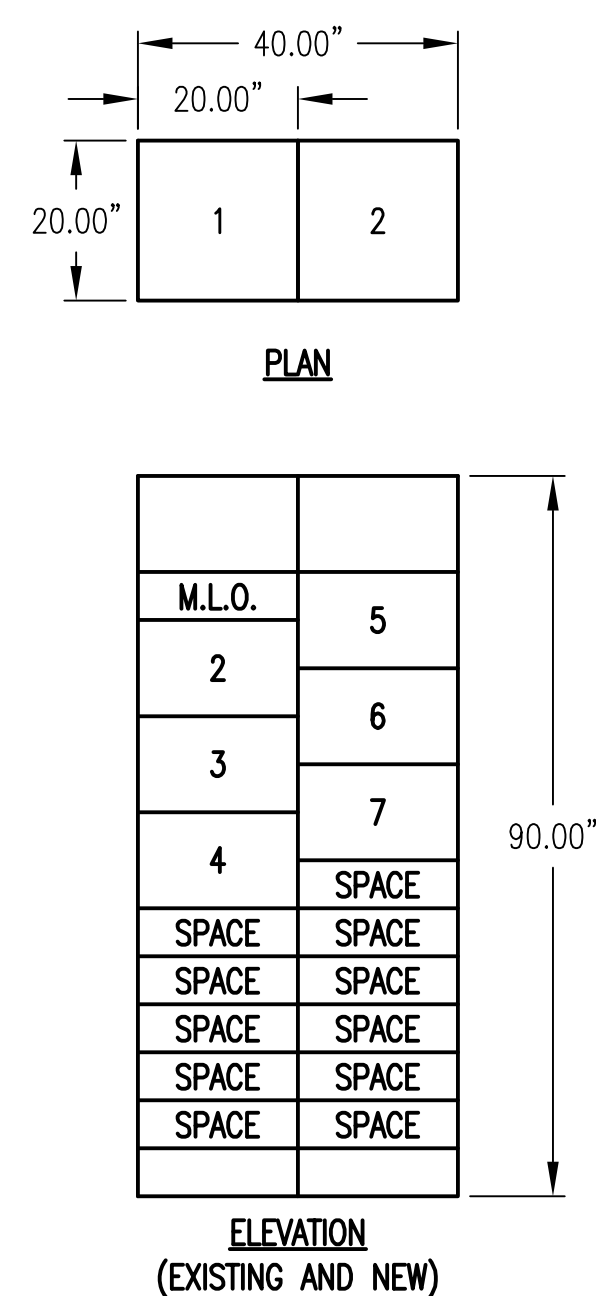
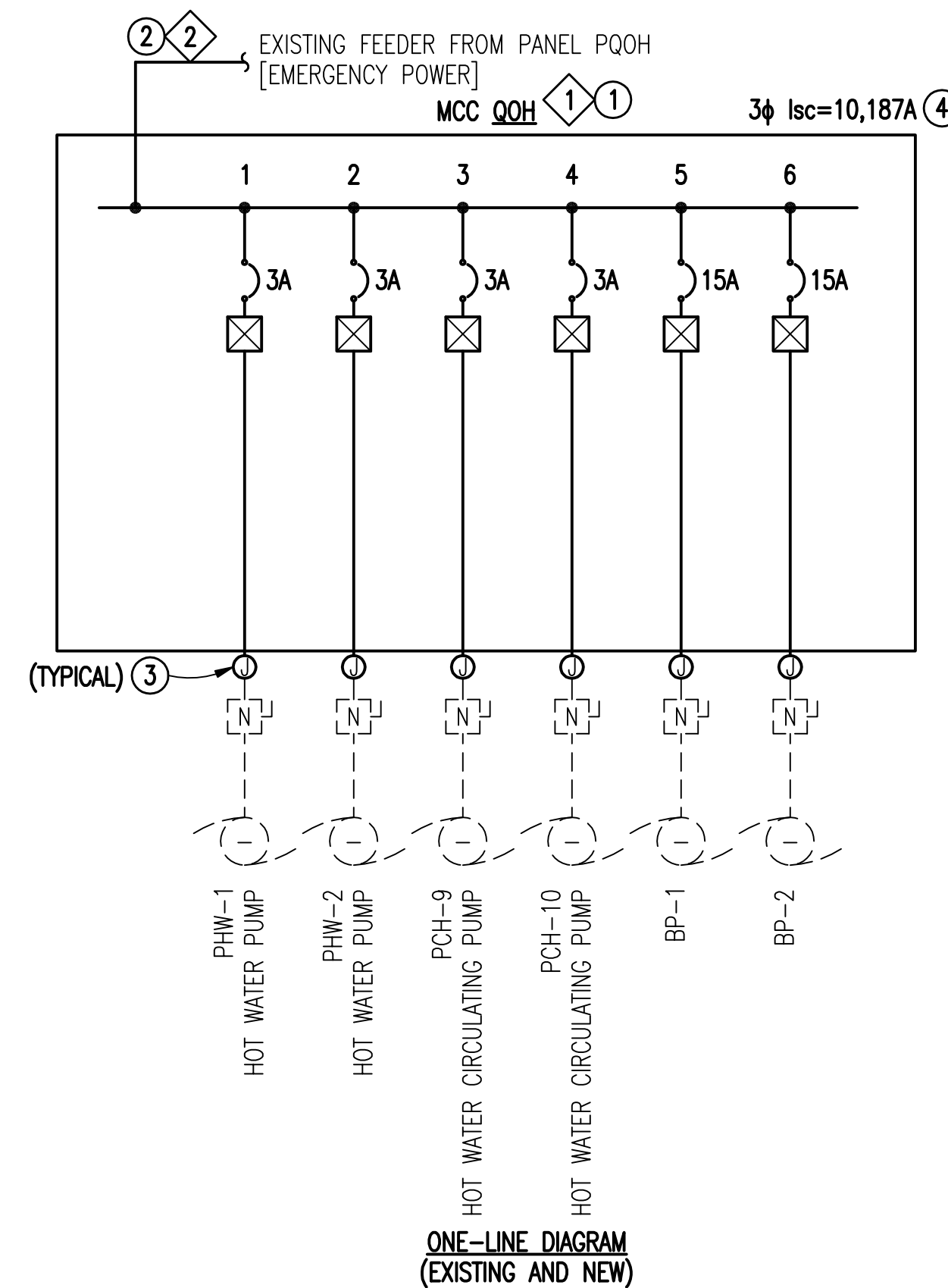


ALTERNATE WORK NOTE
THE WORK SHOWN THIS SHEET IS ALTERNATE #1.



480V, 3W				MOTOR CONTROL CENTER: MCC-QQH							BUS: 400A		
TOP FED										MINIMUM A.I.C.: 42,000			
CIR.	TMB		AMP		STARTER		DESCRIPTION	HP	FLA	KVA	CONDUCTORS/CONDUIT	NOTES	
	AMP	POLE	AMP	POLE	SZ	TYPE							
1	-	-	3	3			MAIN LUGS - FED FROM PD0H	-	-	-	3#6 #10G, 1"		
1	-	-	3	3	1	FVNR	PHW-1 HOT WATER PUMP	1.0	2.1	1.7	3#12 #12G, 3/4"		
3	-	-	3	3	1	FVNR	PHW-2 HOT WATER PUMP	1.0	2.1	1.7	3#12 #12G, 3/4"		
3	-	-	3	3	1	FVNR	PC3-H HOT WATER CIRCULATING PUMP	1.0	2.1	1.7	3#12 #12G, 3/4"		
4	-	-	3	3	1	FVNR	PC3-H HOT WATER CIRCULATING PUMP	1.0	2.1	1.7	3#12 #12G, 3/4"		
5	-	-	15	3	1	FVNR	BP-1	5.0	7.6	6.3	3#12 #12G, 3/4"		
6	-	-	15	3	1	FVNR	BP-2	5.0	7.6	6.3	3#12 #12G, 3/4"		
7	-	-	-	-	-	-	-	-	-	-	-		
8	-	-	-	-	-	-	-	-	-	-	-		
9	-	-	-	-	-	-	-	-	-	-	-		
10	-	-	-	-	-	-	-	-	-	-	-		
TOTALS:								14.0	23.6	19.6			
NOTES:													
FVNR=FULL VOLTAGE NON-REVERSING						FVR=FULL VOLTAGE REVERSING			MCP=MOTOR CIRCUIT PROTECTOR				
FVA=REDUCED VOLTAGE AUTOTRANSFORMER						RVSS=REDUCED VOLTAGE SOLID STATE							
TMB=THERMAL MAGNETIC BREAKER						VFD=VARIABLE FREQUENCY DRIVE							

DEMOLITION NOTES:
(THIS SHEET ONLY)

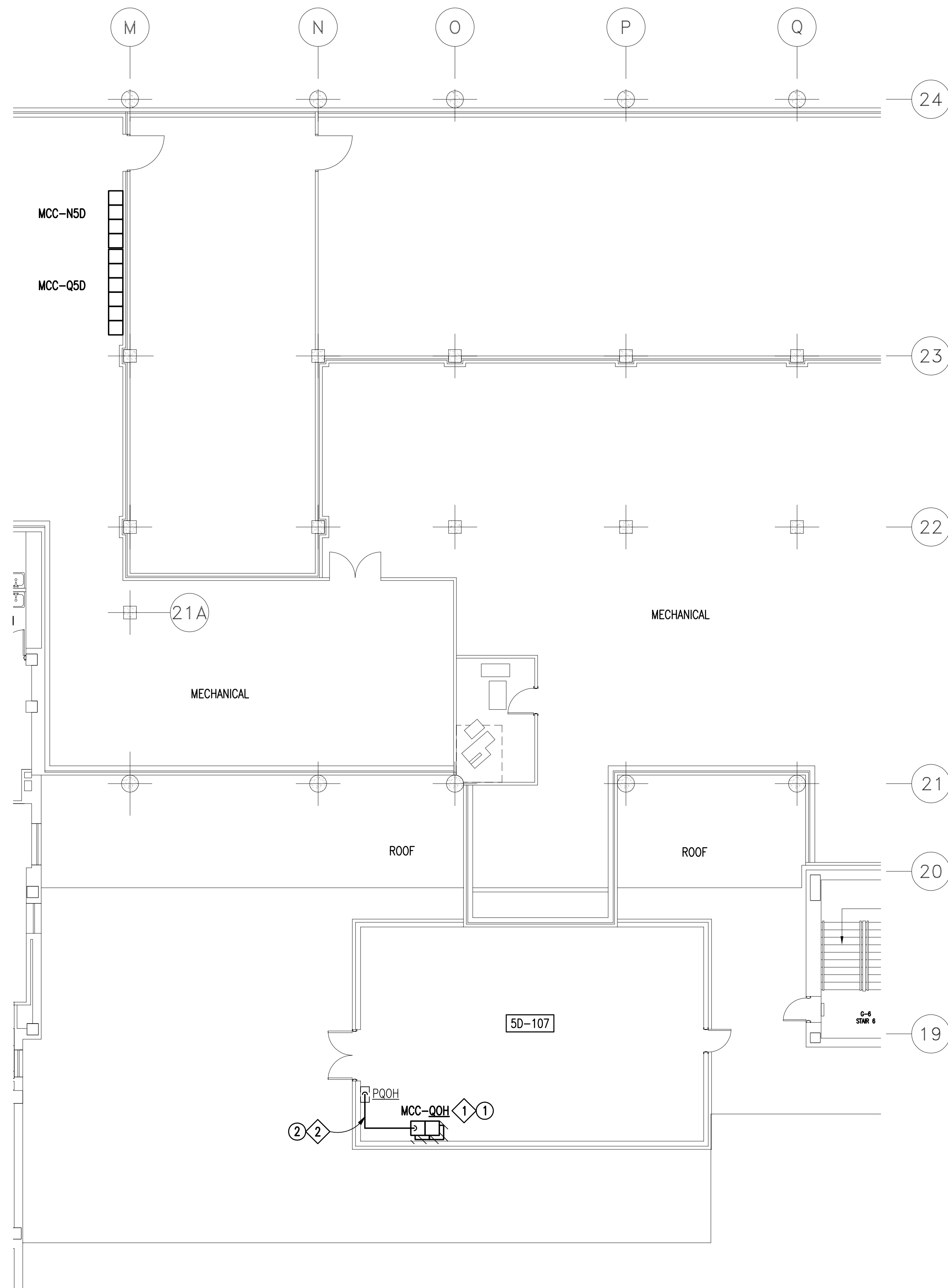
1. DEMOLISH EXISTING MCC-QOH. GE 8000 LINE, 225A, 480 VOLT, 3 PHASE. LOADS SERVED BY MCC-QOH ARE NOT IN SERVICE AND MAY BE LEFT UNCONNECTED WHILE THE MCC IS UNDER REPLACEMENT.
2. DEMOLISH EXISTING FEEDER CONDUCTORS FROM PANEL PQOH.

NEW WORK NOTES:
(THIS SHEET ONLY)

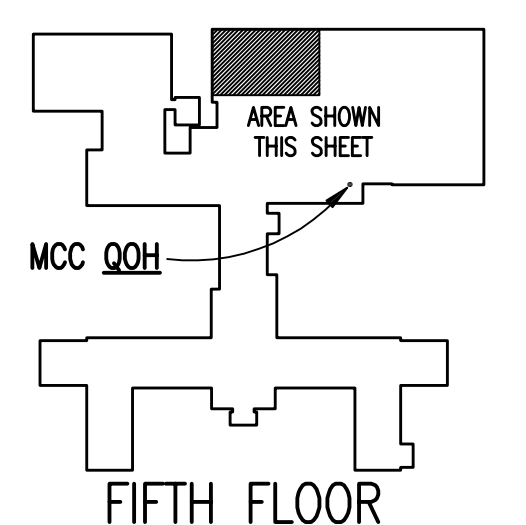
1. INSTALL NEW MCC-OOH.
2. INSTALL NEW FEEDER CONDUCTORS IN EXISTING 1" C. CONNECT TO SAME BREAKER.
3. PROVIDE BOXES, CONDUIT AND CONDUCTORS AS REQUIRED TO INTERCEPT EXISTING CIRCUIT AT MCC LOCATION.
4. PROVIDE AND INSTALL AN ENGRAVED NAMEPLATE ON THE INDICATED EQUIPMENT WITH 3/8" LETTERING AND READING:
 AVAILABLE FAULT CURRENT THIS LOCATION IS ____A.
 DATE: [CURRENT DATE]

MCC DETAILS

SCALE: NONE



MCC-QOH DEMOLITION AND NEW WORK
FLOOR PLAN - 5TH FLOOR
SCALE: 1/8" = 1'-0" 0 4' 8'

[illegible]