

## RO4 REVERSE OSMOSIS WITH DEIONIZER 185 GAL STORAGE TANK AND HIGH FLOW PUMP MODEL 00HCS-2057

## Healthcare Water Treatment Systems Technical Data Sheet

### DESCRIPTION:

Provides low conductivity water for washers, disinfectors, glassware washers, steam boilers and final rinses. Reverse osmosis system, a deionizer polisher, and a storage tank with demand pump package that provides up to 5,600 GPD.

### FEATURES:

- Pre-carbon block filter
- Anti-scalant feed to prevent hard water scale on reverse osmosis
- Deionizer polisher includes a 200,000 ohm-cm monitor with alarm
- Controller with conductivity of feed and product water
- Simple disinfection cycle
- Storage tank with sealed lid and pump package
- Low feed pressure system shutdown / alarm
- High conductivity alarm
- Storage tank empty pump shutdown

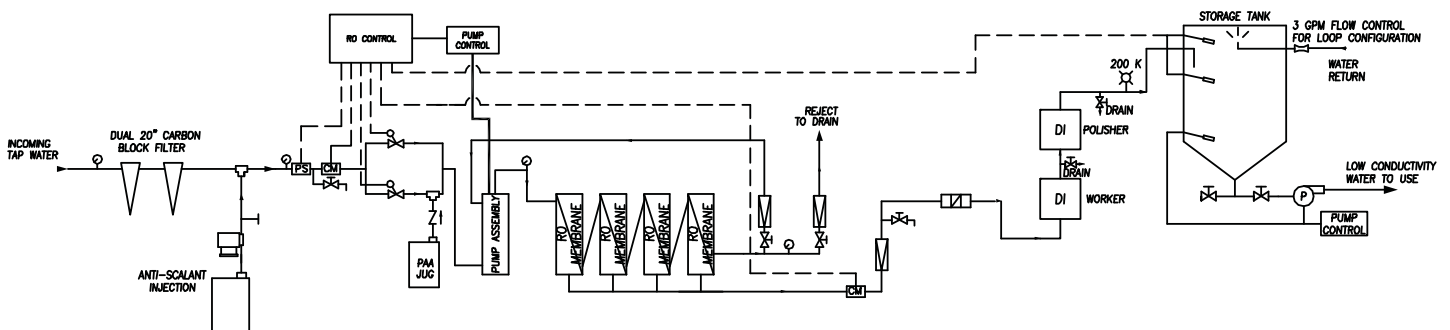
### STANDARDS:

- ETL listed, conforms to UL Std 61010-1
- Certified CAN/CSA C22.2 No. 61010-1
- ISO134585 registered device
- Seismic OPA-2202-07



### PRINCIPLE OF OPERATION for COMPLETE WATER TREATMENT SYSTEM:

Tap water enters the system through the filters, after which the anti-scalant chemical is pumped into the flow to the reverse osmosis pump and membranes. DI product water flows to the 185 gallon storage tank, reject concentrated waste water flows to the drain (product and reject are 50% each). The demand pump runs when flow is needed and pumps the low conductivity water to the use.




STERIS Corporation  
5960 Heisley Road  
Mentor, OH 44060-1834 • USA  
440-354-2600 • 800-548-4873  
www.steris.com



**RO4 REVERSE OSMOSIS WITH DEIONIZER  
185 GAL STORAGE TANK AND HIGH FLOW PUMP  
MODEL 00HCS-2057**

**Healthcare Water Treatment Systems  
Technical Data Sheet**

SPECIFICATIONS	
Drain	One 1-1/2" floor drain or sink
Feed Water Quality	Potable drinking water standards
Feed Water Temperature	Between 41°F - 90°F (Ideal 77°F)
Feed Water Flow Minimum	5 GPM
Feed Water Pressure Min. / Max.	20 PSI / 50 PSI
Projected Rejection	> 96%
Production Rated Capacity*	5,600 GPD / 21,196 LPD
Storage Tank (Gallons)	185
Distribution Pump Output	30 GPM @ 30 PSI
Electrical	One 115V, 15 amps dedicated circuit Two 220V, 15 amps dedicated circuit
Recommended Space In. (W x D)	129 X 72
System Dimensions In. (W x D x H)	105 X 36 X 94
Weight – Shipping / Operating Lbs.	913 / 2,458

\* Product flow rate varies with temperature and inlet pressure. All models are rated at 77°F with feed water of 1500 mg/l NaCl @ 55 PSI feed pressure and pH of 7.5. As a safety factor use 60% of the rated capacity when sizing or add blend valve to temper the feed water.

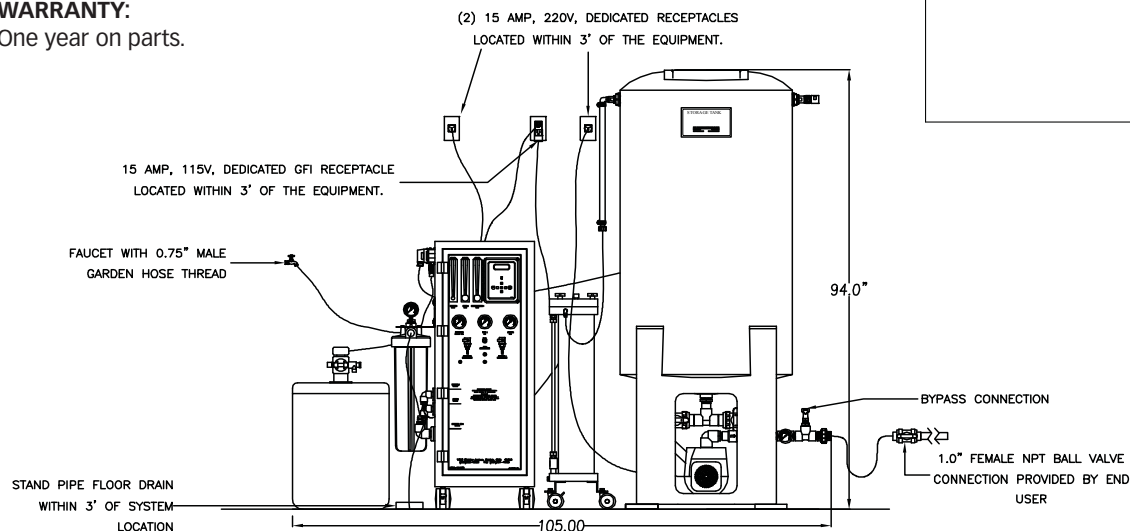
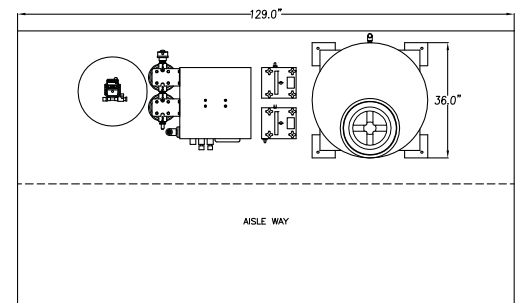
**INSTALLATION:**

The system can be installed with up to 50' of pipe from the use.

ACCESSORIES	
00850300	Remote alarm package
75679117	1 megohm monitor with alarm for deionizer
00HC-5001	Blend valve assembly

**WARRANTY:**

One year on parts.



STERIS Corporation  
5960 Heisley Road  
Mentor, OH 44060-1834 • USA  
440-354-2600 • 800-548-4873  
www.steris.com