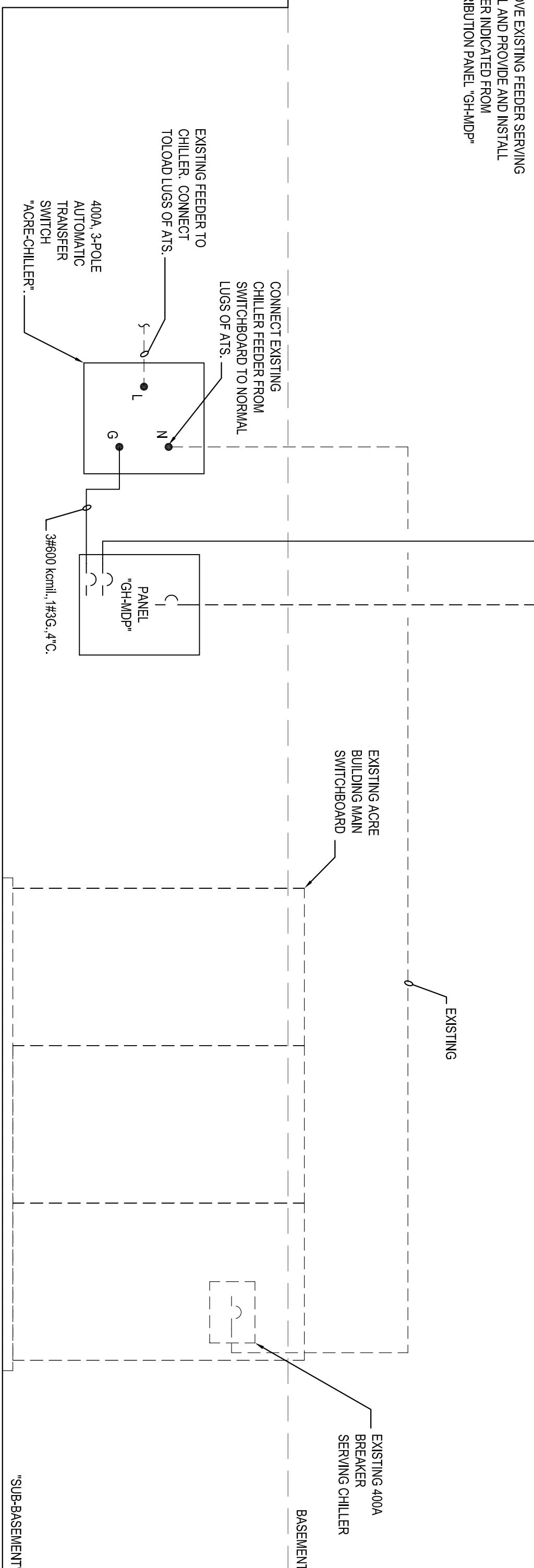
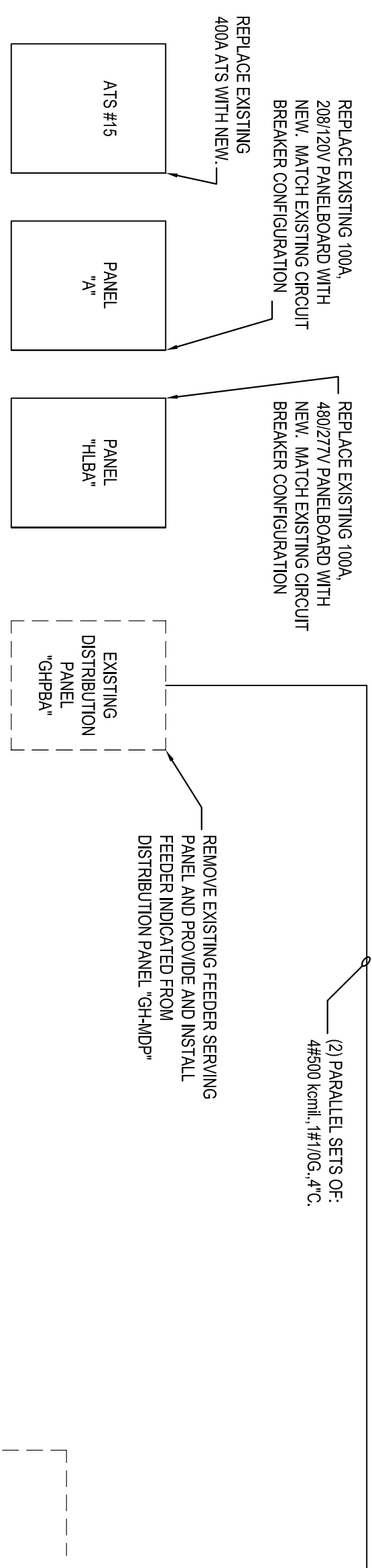
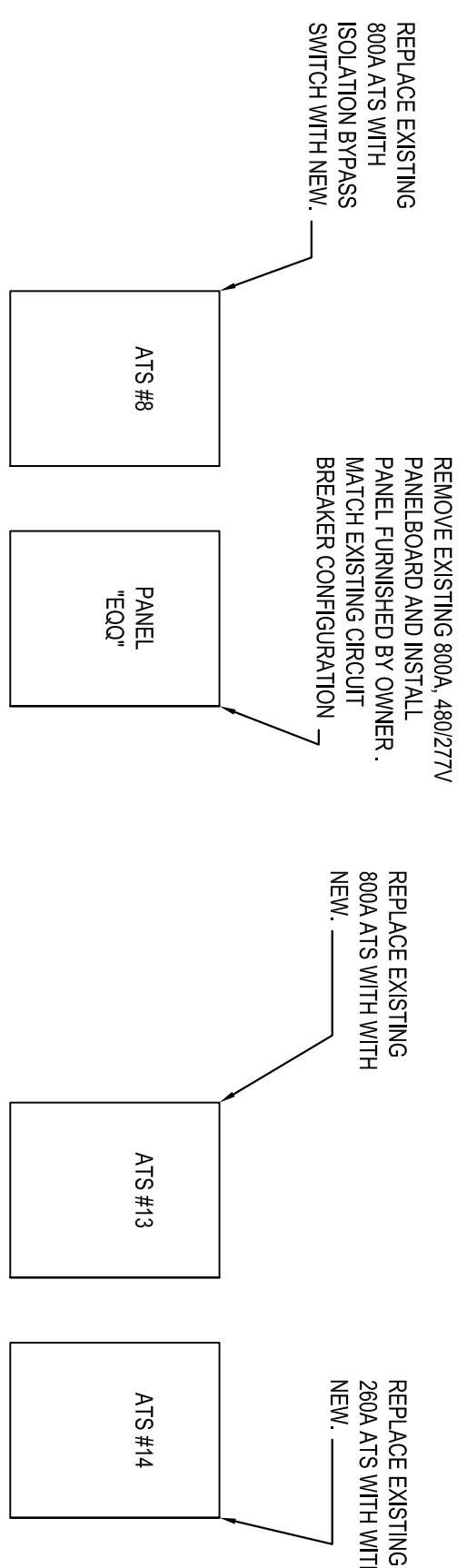


This Drawing as an instrument of service is and shall remain the property of the Engineer and shall not be reproduced, published or used in any way without written permission of said Engineer.

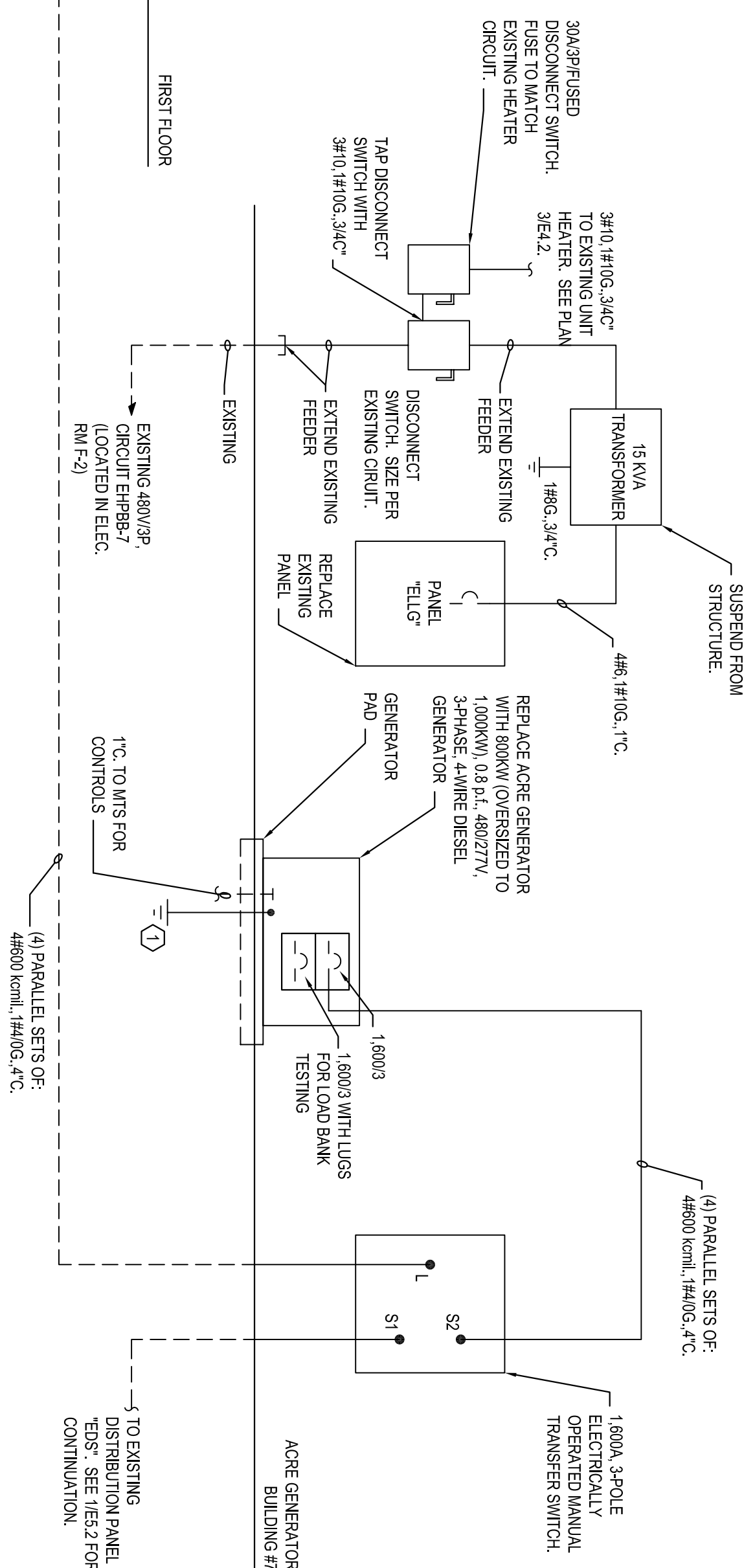
NOTE		NO.	DESCRIPTION	WV	REV.	PN	BY	DATE	NO.	NOTE
1		D	TANK PUMP #1 CONTR	2001	A	2001		1/5	2	
3		D	TANK PUMP #2	2001	B	2001		BATTERY CHARGER	4	
5		D	EXTERIOR LVS	2001	C	2001		BATTERY TENDER	6	
7		D	INTERIOR LVS	2001	C	2001		GENERATOR DAMPER	8	
9		D	SPACE	2001	B	2001		GENERATOR MONITOR	10	
11		D	SPACE	2001	C	2001		VEHICLE ROOT MONITOR	12	
13		D	SPACE	2001	A	2001		VEHICLE ROOT MONITOR	14	
15		D	SPACE	2001	B	2001		SPACE	16	
17		D	SPACE	2001	C	2001		SPACE	18	



1	PARTIAL RISER DIAGRAM ACRE BUILDING
E5.1	SCALE: NOT TO SCALE



2 PARTIAL RISER DIAGRAM ACRE BUILDING
E5.1 SCALE: NOT TO SCALE



GENERAL NOTES

1. WHERE EXISTING EQUIPMENT IS TO BE REPLACED, EQUIPMENT AND DEVICES SHALL FULLY RATED TO MEET OR EXCEED EXISTING EQUIPMENT SHORT CIRCUIT RATINGS.
2. WHERE NEW EQUIPMENT IS PROVIDED OR WHERE FEEDERS HAVE BEEN MODIFIED EQUIPMENT, SEE SPECIFICATIONS FOR SHORT CIRCUIT AND COORDINATION STUDY REQUIREMENTS.

KEY NOTES

- ① PROVIDE A MINIMUM OF ONE (1) COPPERWELED GROUND ROD, 3/4" X 10'-0" DRIVEN 24" BELOW GRADE. IF THE RESISTANCE TO GROUND EXCEEDS 25 OHMS, ADDITIONAL RODS SHALL BE DRIVEN AND BONDED TOGETHER UNTIL A READING OF 25 OHMS OR LESS TO GROUND IS OBTAINED. EXTEND A #10 GROUND IN 3/4"C. TO GENERATOR AND BOND TO GENERATOR GENERATOR HOUSING AND FRAME PER NEC 250.

VA TVHS
Nashville
Campus -
Replace ACRE
Generator,
Utility
Infrastructure

G&P PROJECT NO.	09031
DATE	6/10/09
DRAWN BY:	H. BELYEU
CHECKED BY:	G. GRAY

DRAWING TIME

RISE R DIAGRAM ACRE BUILDING

DRAWING NUMBER

E.5.1