**Highland Tank®**

CATWALK CONSTRUCTION DETAILS

CUSTOMER:

PROJECT:

QUOTE NO:

SCALE: 1"=1'-0"

DATE: 5-27-10

DWG. BY: MTS

DWG. NO: CTWKCONST top

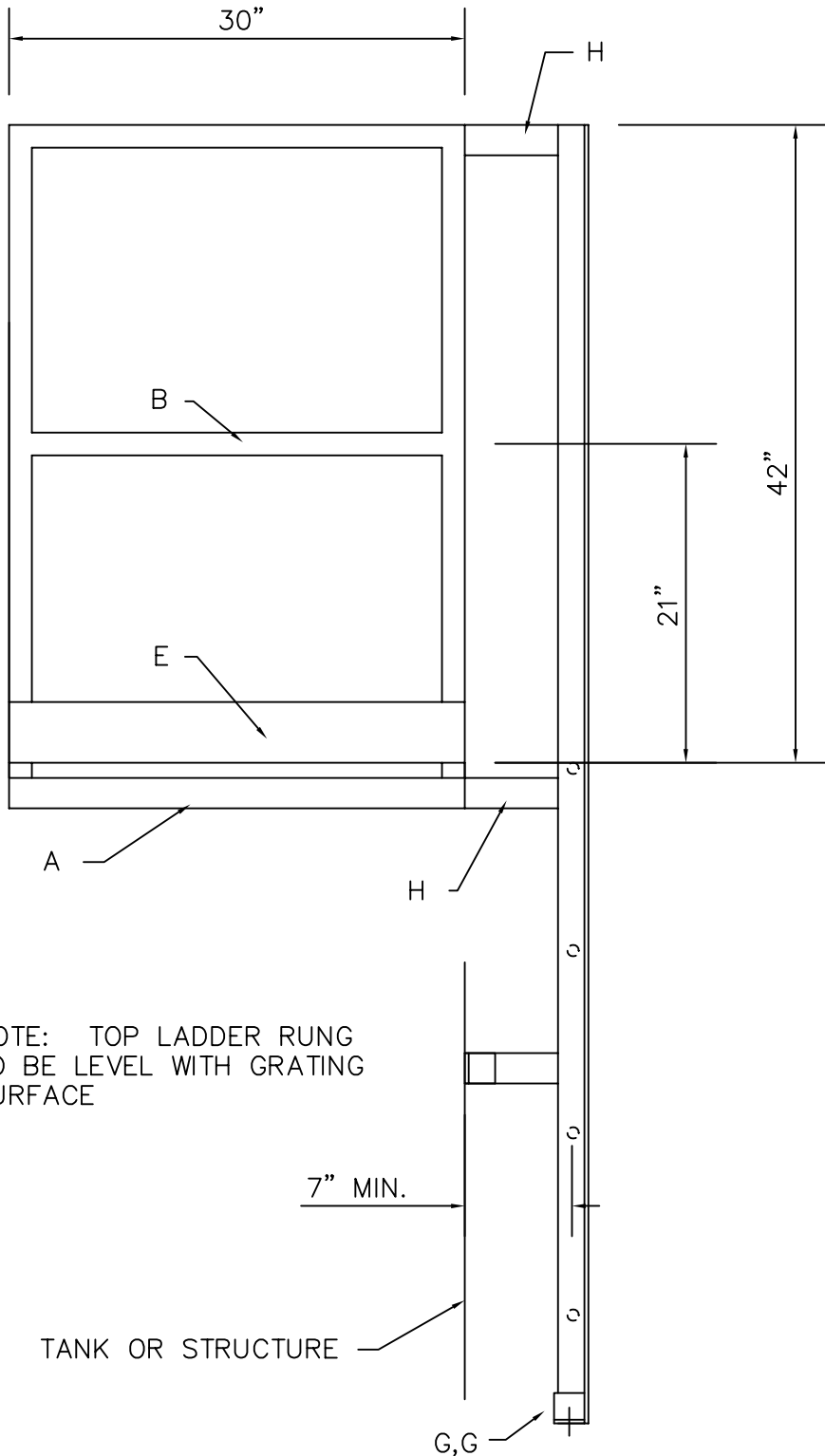
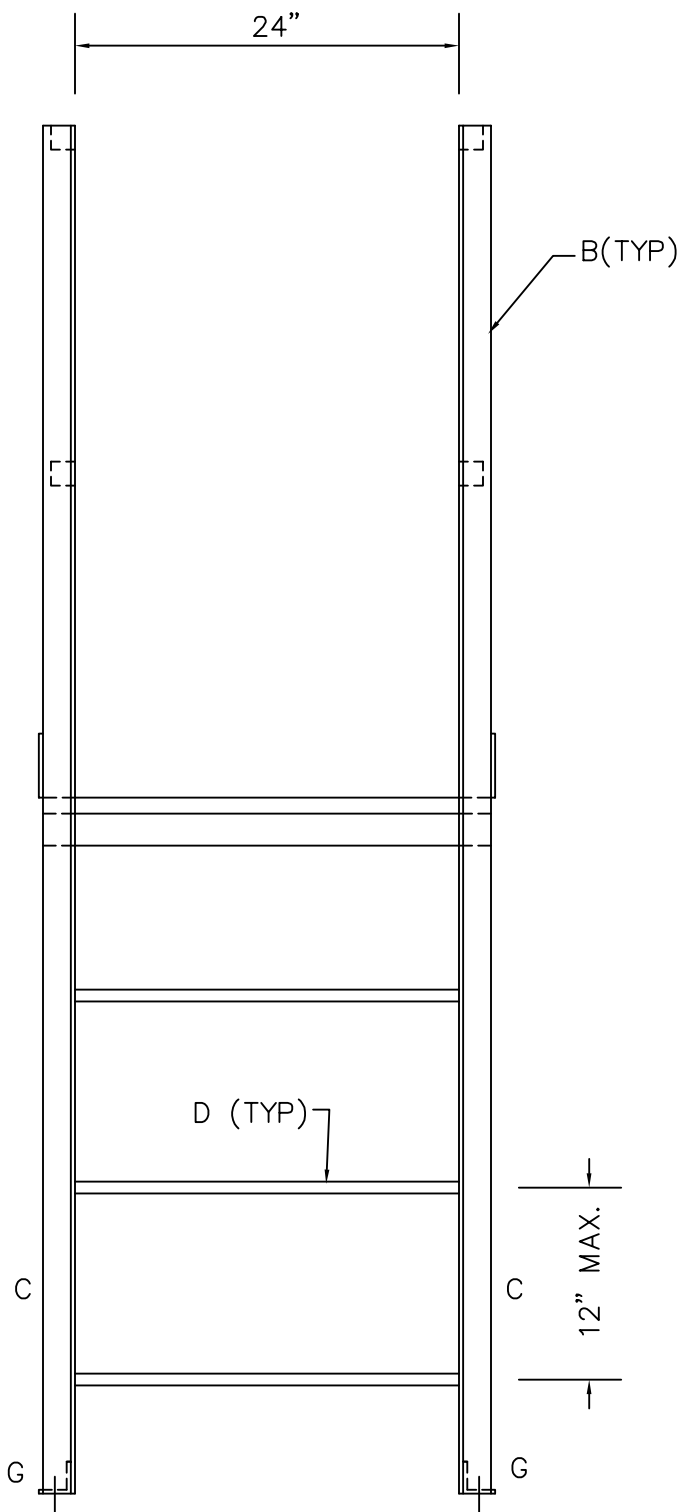
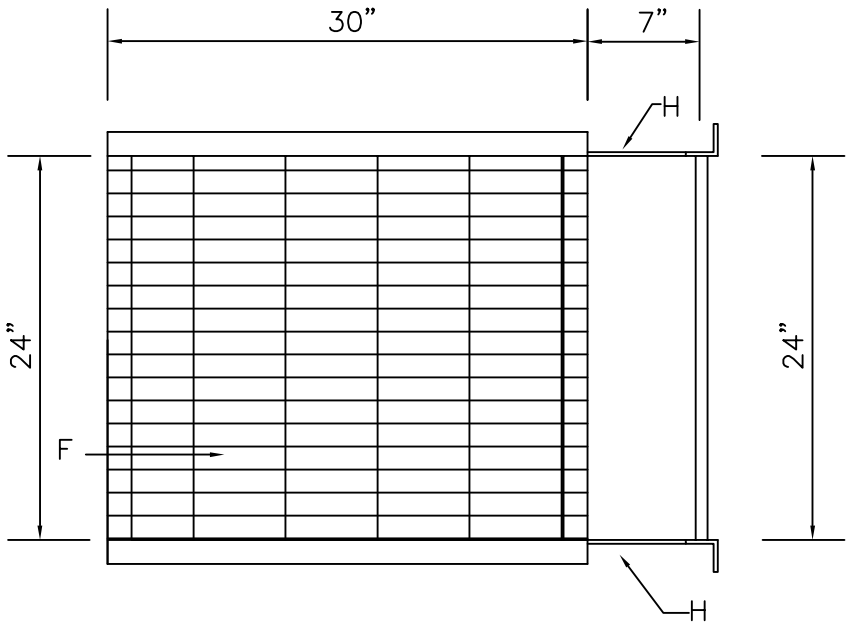
CHK'D BY:

SPECIFICATIONS

MATERIAL – MILD CARBON STEEL
(ALUMINUM AVAILABLE BY REQUEST)

CONSTRUCTION – WELDED

EXT. FINISH – SHOP PRIMER
(SAFETY YELLOW PAINT AVAILABLE
BY REQUEST)
(HOT-DIPPED GALVANIZING AVAILABLE
BY REQUEST)



LEGEND	
A	L2 X 2 X 1/4" ANGLE FRAME
B	1-1/2" SQUARE TUBING HANDRAIL
C	L2 X 2 X 1/4" LADDER SIDE BARS
D	3/4"Ø ROUND BAR LADDER RUNGS
E	FB4 X 1/4" TOEPLATE
F	1" THICK FIBERGLASS GRATING
G	L2 X 2 X 3/8" LAG CLIPS WITH 9/16" HOLE
H	FB2 X 1/4"
J	

NOTE: ALL RIGHTS RESERVED. THIS DRAWING MUST NOT BE REPRODUCED IN ANY FORM WITHOUT THE WRITTEN PERMISSION OF HIGHLAND TANK®. HIGHLAND TANK® SHALL BE RESPONSIBLE ONLY FOR ITEMS INDICATED ON THIS FABRICATION DRAWING UNLESS OTHERWISE NOTED. CUSTOMER IS RESPONSIBLE FOR VERIFYING CORRECTNESS OF SIZE AND LOCATION OF FITTINGS, ACCESSORIES, AND COATINGS SHOWN ON THIS DRAWING.

TOUCH UP OF FINISHED PAINT IS REQUIRED BY INSTALLATION CONTRACTOR. TOUCH UP PAINT SHIPPED WITH TANK.

Highland Tank

UNLESS NOTED, TOLERANCES ARE +/- 1"

LADDER & 24" WIDE PLATFORM

CUSTOMER:

PROJECT:

QUOTE NO:

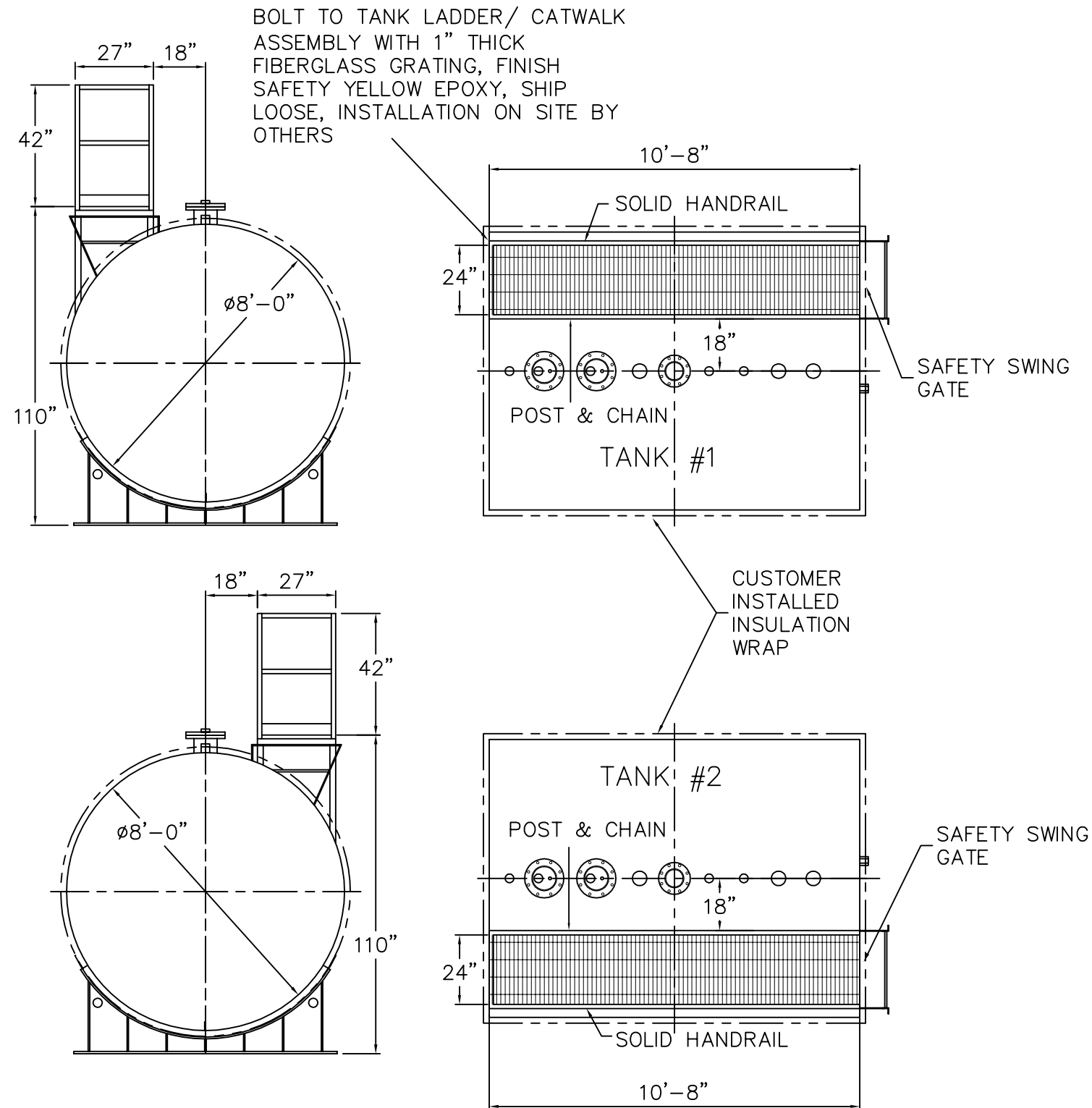
CHK'D BY:

SCALE: 1" = 12"

DATE: XX/XX/XX

DWG. BY: XXX

DWG. NO.: LADDER&PF



△					
		<h1>Highland Tank</h1>			
UNLESS NOTED, TOLERANCES ARE +/- 1"					
4,000 GAL 96"ø SW AG HORIZONTAL LADDER/CATWALK DETAILS					
CUSTOMER:					
PROJECT:					
QUOTE NO:					CHK'D BY:
SCALE: 1/4"=1'-0"	DATE: 7/25/18	DWG. BY: 002	DWG. NO.: 107541-3		