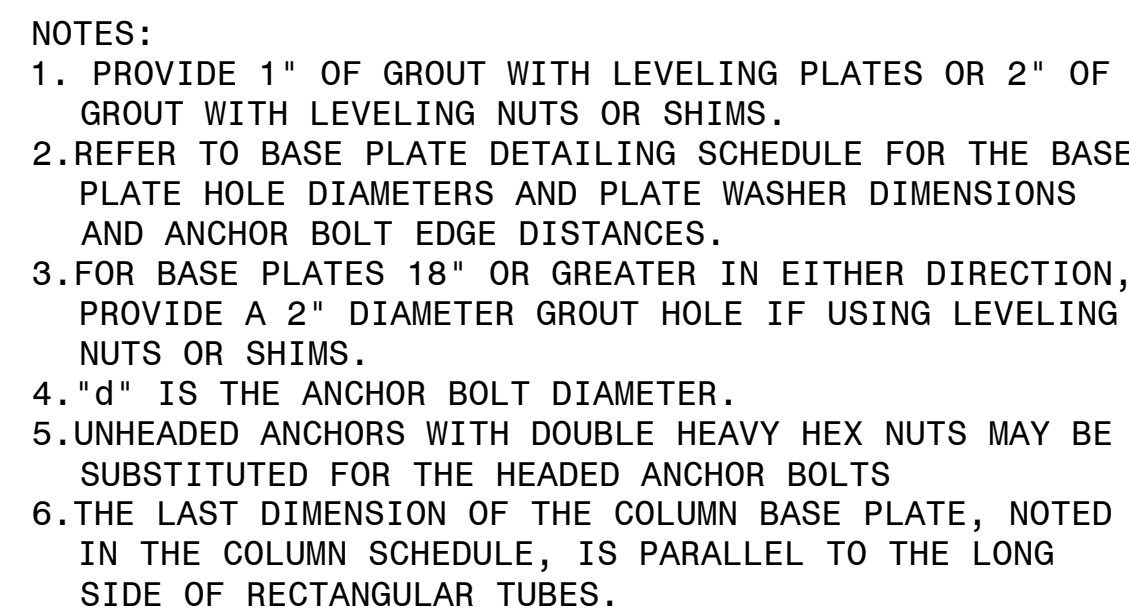
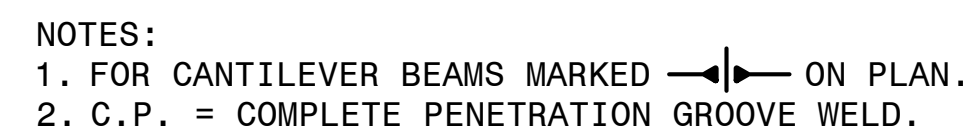


## A BASE DATA



**B** TYPICAL  
HSS COLUMN



(K) CANTILEVER BEAM AT GIRDER



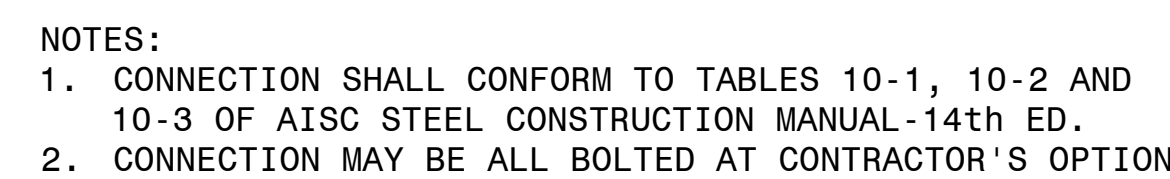
## FLOOR SLAB CONSTRUCTION



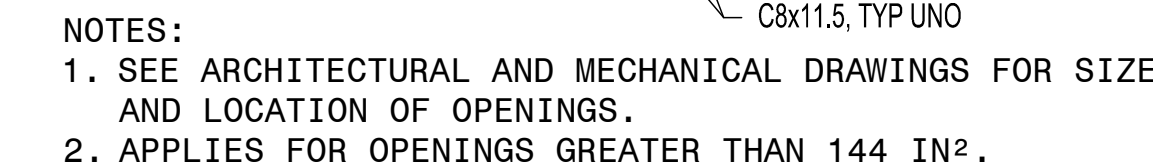
BEAM / COLUMN CONNECTION



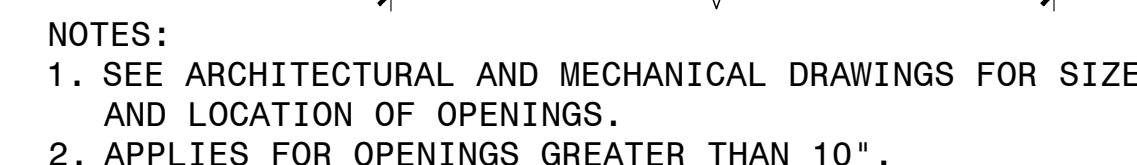
Ⓓ PLATE BEAM CONNECTION



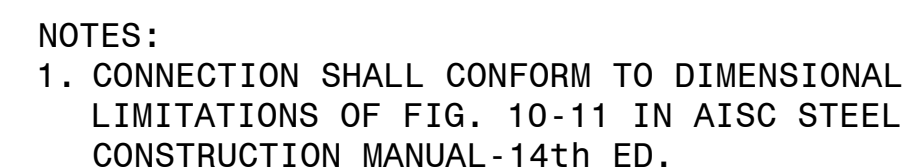
## BEAM CONNECTION



(11) SLAB WITH METAL DECK



(1) TYPICAL ROOF OPENING  
(STEEL BEAMS / PRE-FAB CURB)



## BEAM TO BEAM CONNECTION



(N) POST ON STEEL BEAM



(M) HSS COLUMN OR POST ON STEEL BEAM



(R) EXTERIOR CFMF STUD WALL  
(JOIST PARALLEL TO WALL)



## REINFORCING AT SLAB OPENINGS



### 0 TYPICAL RIDGE & HIP BEAM DETAIL (WITH TOP PLATES)




**(P) TYPICAL VALLEY BEAM DETAIL**  
(WITH TOP PLATES)

NOTES:  
1. SEE COLUMN SCHEDULE FOR ANCHOR BOLT DIAMETER.  
2. PLATE WASHERS SHALL HAVE STANDARD HOLES.

**ARCHITECT/ENGINEERS:**

---




ARCHITECTURE  
PLANNING  
ENGINEERING

**POLT DESIGN GROUP**

2215 Conowingo Rd., Suite 101 410.803.2141  
Bel Air, Maryland 21015-1436 fax 410.836.6611

[www.polt-design.com](http://www.polt-design.com)

Drawing Title <div style="background-color: black; width: 100%; height: 100px;"></div>	Project Title REPLACEMENT COMMUNITY LIVING CENTER			Project Number 512-173	Office of Construction and Facilities Management
				Building Number 370	
	Approved Project Director			Drawing Number S401	
			Location PERRY POINT VA MEDICAL CENTER		
			Date 06/08/2018	Checked CEI	Drawn CEI
			 Department of Veterans Affairs		

FINAL CONSTRUCTION DOCUMENTS  
FULLY SPRINKLERED

Office of  
Construction  
and Facilities  
Management

 Department of  
Veterans Affairs