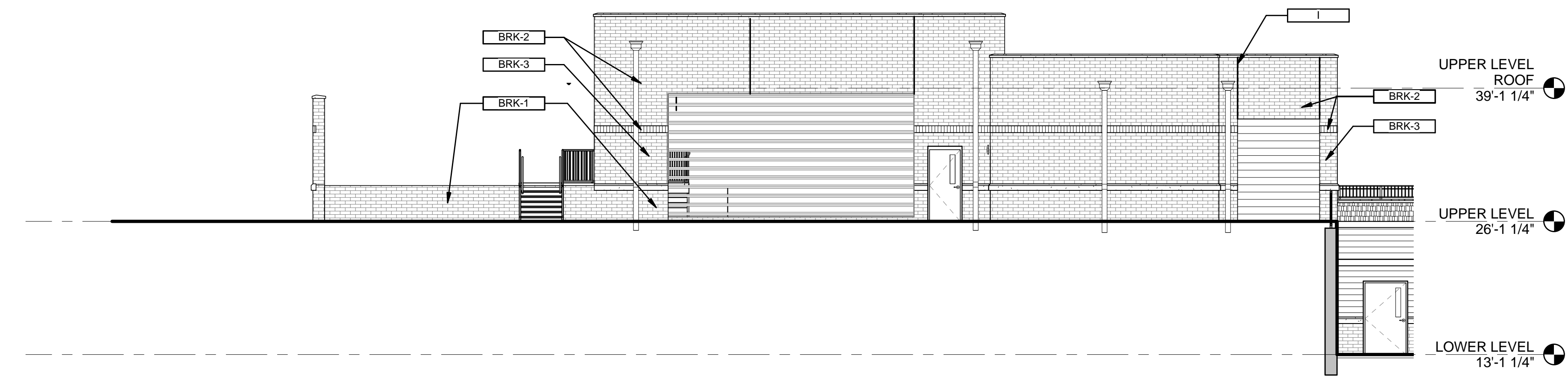
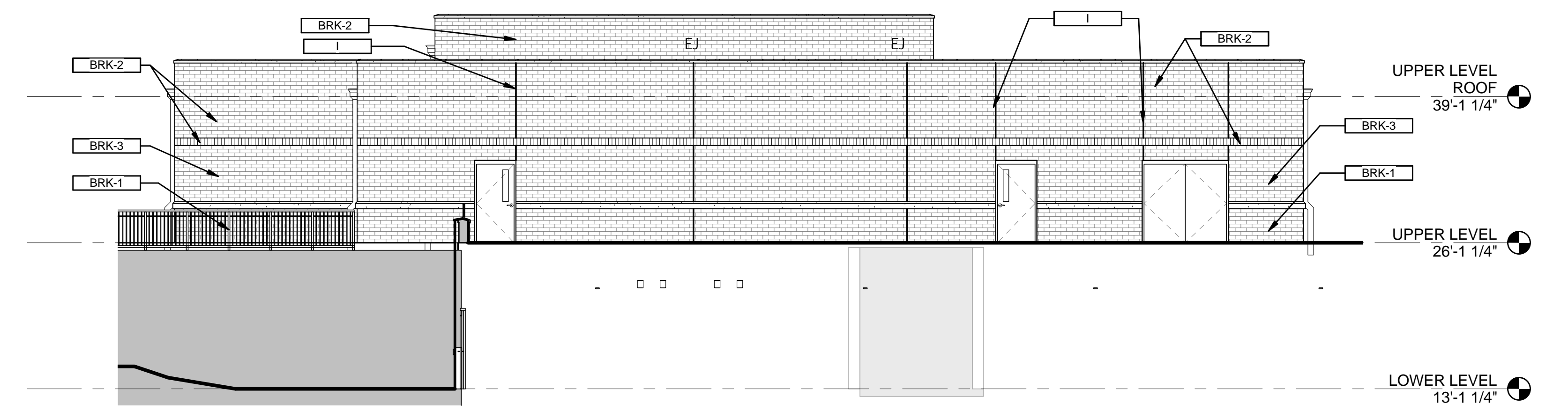


three eighths inch = one foot
 one half inch = one foot
 one inch = one foot
 three quarters inch = one foot
 one half inch = one foot
 one quarter inch = one foot
 three eighths inch = one foot
 one half inch = one foot
 one eighth inch = one foot

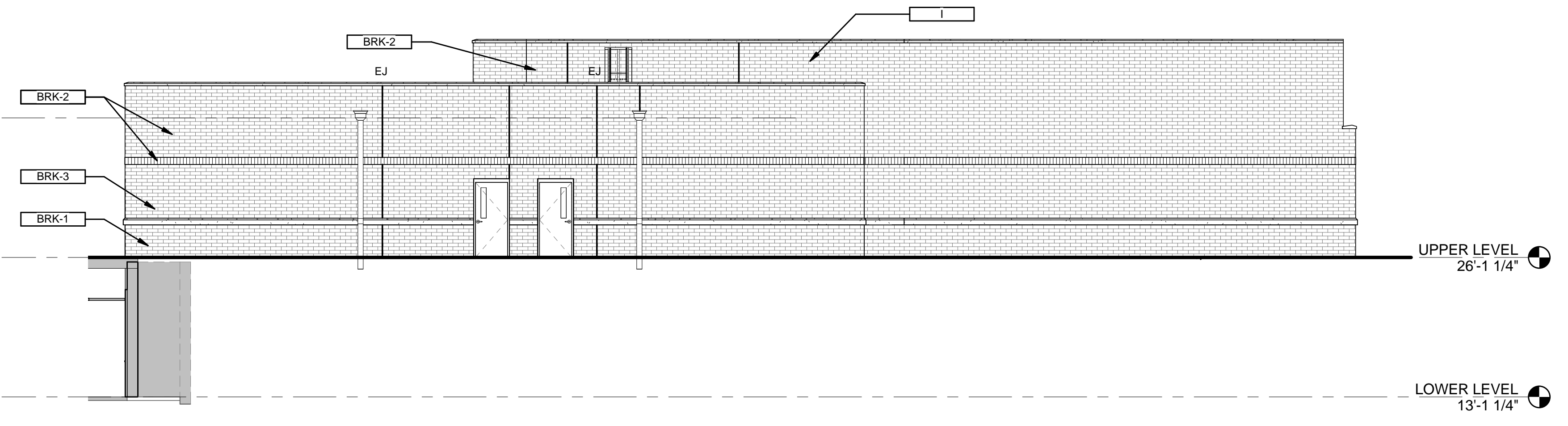
A
 B
 C
 D
 E
 F



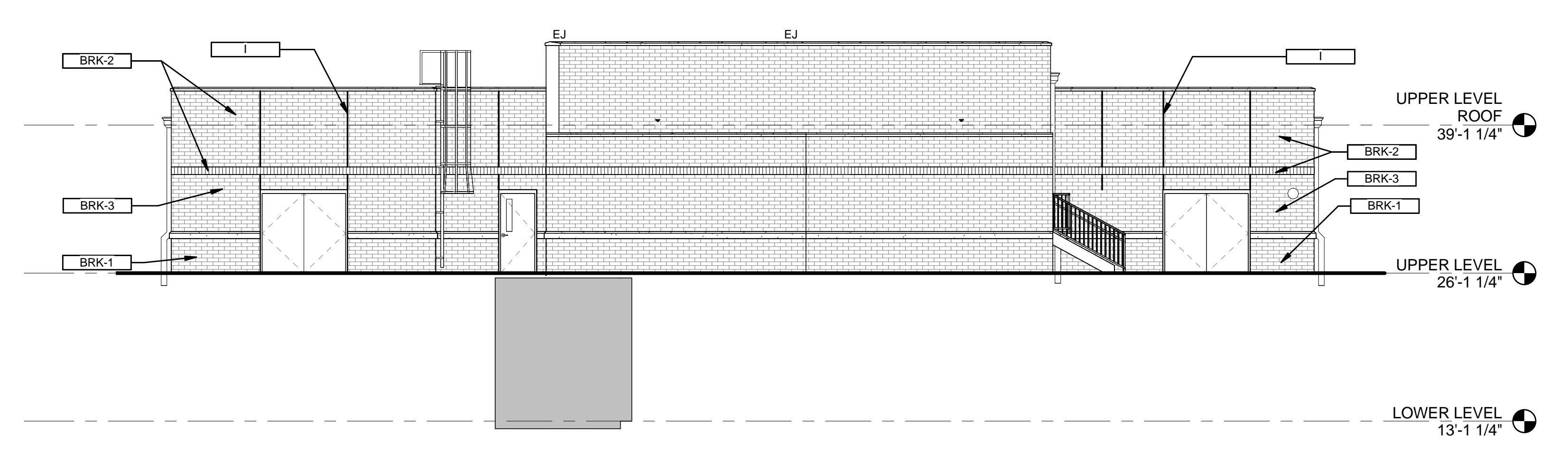
**EXTERIOR FINISHES - MECHANICAL
BUILDING - WEST**
AS215 1/8" = 1'-0"



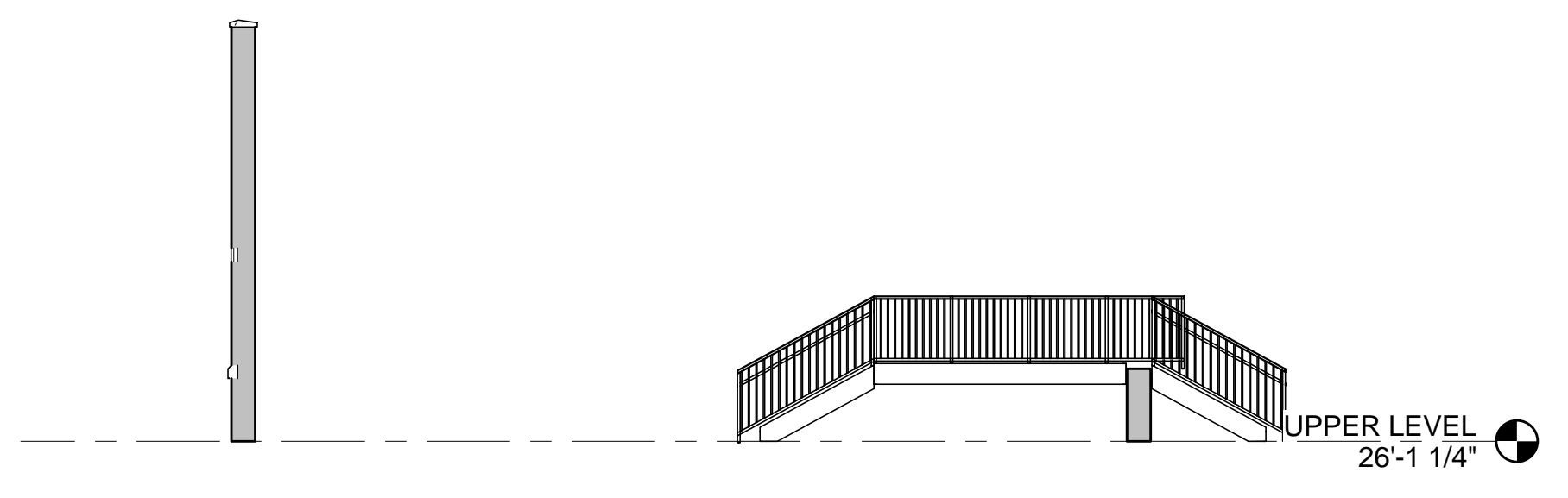
**EXTERIOR FINISHES - MECHANICAL
BUILDING - SOUTH**
AS215 1/8" = 1'-0"



**EXTERIOR FINISHES - MECHANICAL
BUILDING - PARTIAL EAST**
AS215 1/8" = 1'-0"



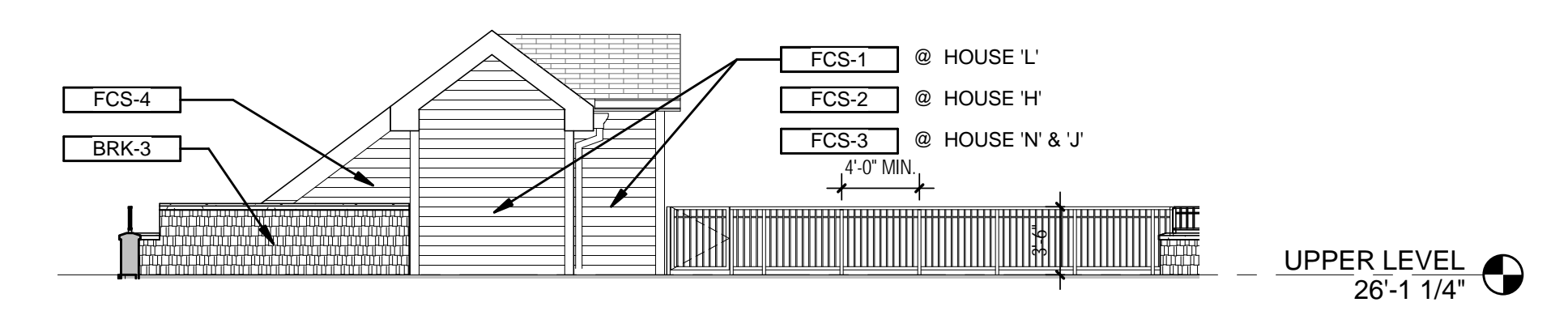
**EXTERIOR FINISHES - MECHANICAL
BUILDING - NORTH**
AS215 1/8" = 1'-0"



**EXTERIOR FINISHES - MECHANICAL
BUILDING - NORTH - FUEL CONTAINMENT**
AS215 1/8" = 1'-0"

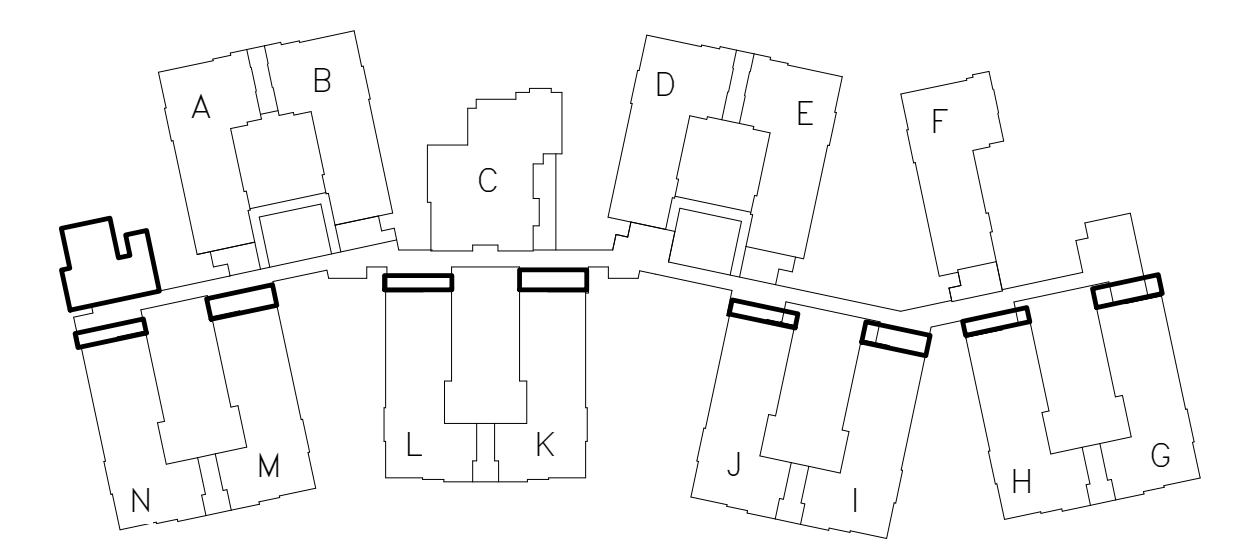


**EXTERIOR FINISHES - TYP. LOWER LEVEL
STAIRS AT G, I, K & M AT PROMENADE
- NORTH ELEVATION**
AS215 1/8" = 1'-0"



**EXTERIOR FINISHES - TYP. LOWER LEVEL
HOUSES H, J, L & N AT PROMENADE -
NORTH ELEVATION**
AS215 1/8" = 1'-0"

| EXTERIOR FINISHES | |
|-------------------|--|
| FINISH | DESCRIPTION |
| BRK-1 | REDLAND BRICK - BAYSHORE w/ FLAMINGO BRIXMENT - RW-5 |
| BRK-2 | REDLAND BRICK - BAYSHORE w/ FLAMINGO BRIXMENT - SOFT WHITE |
| BRK-3 | REDLAND BRICK - RUSTIQUE w/ FLAMINGO BRIXMENT - SOFT WHITE |
| FCS-1 | FIBER CEMENT LAP SIDING - PAINT COLOR - BLUE |
| FCS-2 | FIBER CEMENT LAP SIDING - PAINT COLOR - GREEN |
| FCS-3 | FIBER CEMENT LAP SIDING - PAINT COLOR - BEIGE |
| FCS-4 | FIBER CEMENT SHINGLE SIDING - PAINT COLOR - BEIGE |
| SILL | ROCKCAST |
| TRM | SUBSTRATE VARIES - PAINT TO MATCH - PREFINISHED MTL. |



KEY PLAN

**FINAL CONSTRUCTION DOCUMENTS
FULLY SPRINKLERED**

| | | | | | | | | |
|--|---|--|--|--|---|--|---|---|
| CONSULTANTS: BURDETTE KOEHLER MURPHY & ASSOCIATES, INC. MECHANICAL / ELECTRICAL CONSULTING ENGINEERING 1416 CLARKVIEW ROAD, SUITE 500 BALTIMORE, MARYLAND 21209 410.323.0600 - FAX 410.377.2543 CENTURY ENGINEERING, INC. CIVIL & STRUCTURAL ENGINEERING 1070 GLEBEY ROAD HUNT VALLEY, MARYLAND 21031 443.589.2400 - FAX 443.589.2401 | KOFFEL ASSOCIATES, INC. FIBER PROTECTION ENGINEERING 8815 CENTRE PARK DR., SUITE 200 COLUMBIA, MARYLAND 21045 410.750.0204 - FAX 410.750.2988 | ROBERT L. SEYMOUR & ASSOCIATES, INC. VERTICAL TRANSPORTATION CONSULTANTS 182 THOMAS JOHNSON DR., SUITE 200 FREDERICK, MARYLAND 21702 301.662.8112 - FAX 301.662.8117 | I.D.E.A.S., INC. PLANTREE CONSULTANT 8655 CHOROKAN RD. KYTLAND, OHIO 44704 440.254.1980 - FAX 440.254.1981 | ARCHITECT/ENGINEERS: ARCHITECTURE PLANNING ENGINEERING POLT DESIGN GROUP 2215 Conowingo Rd., Suite 101 Bel Air, Maryland 21015-1436 410.803.2141 fax 410.836.6611 www.polt-design.com | Drawing Title EXTERIOR FINISHES - MECHANICAL BUILDING Approved: Project Director | Project Title REPLACEMENT COMMUNITY LIVING CENTER Location PERRY POINT VA MEDICAL CENTER Date 06/08/18 Checked CAJ Drawn JKI/CE/BJP/ W/P/DW/DK | Project Number 512-173 Building Number 370 Drawing Number AS215 | Office of Construction and Facilities Management |
| | 1 BID RFIs REVISION 10-5-18 Revisions: Date | | | | | | | |