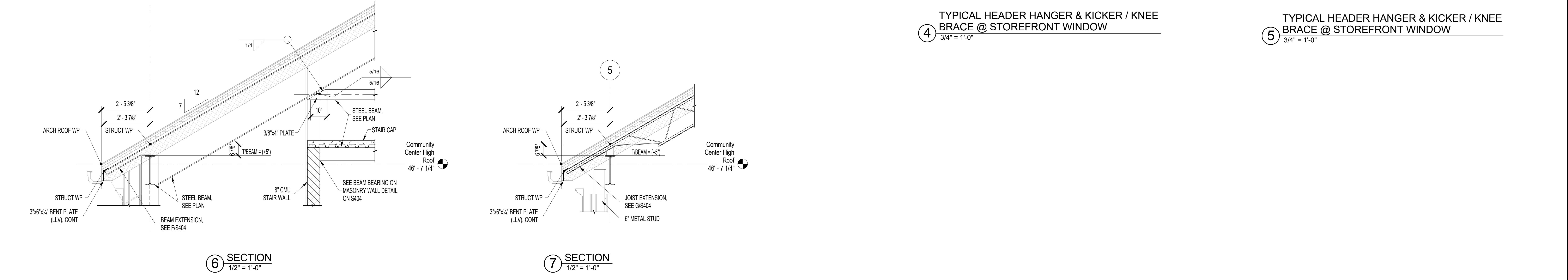
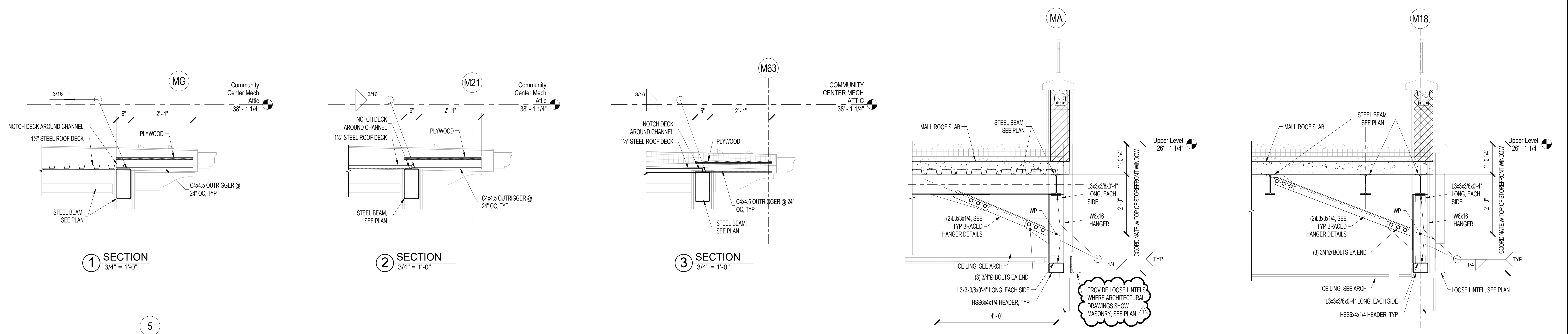


three inches = one foot
 one and one half inches = one foot
 one inch = one foot
 one quarter inch = one foot
 one half inch = one foot
 three eighths inch = one foot
 one eighth inch = one foot
 one quarter inch = one foot
 one eighth inch = one foot



FINAL CONSTRUCTION DOCUMENTS
 FULLY SPRINKLERED

CONSULTANTS: BURDETTE KOEHLER MURPHY & ASSOCIATES, INC. MECHANICAL / ELECTRICAL CONSULTING ENGINEERING 1416 CLARKVIEW ROAD, SUITE 500 BALTIMORE, MARYLAND 21209 410.223.0600 - FAX 410.377.2543 CENTURY ENGINEERING, INC. CIVIL & STRUCTURAL ENGINEERING 10716 GILROY ROAD HUNT VALLEY, MARYLAND 21031 443.589.2400 - FAX 443.589.2401		KOFFEL ASSOCIATES, INC. FIRE PROTECTION ENGINEERING 8815 CENTRE PARK DR., SUITE 200 COLUMBIA, MARYLAND 21045 410.750.2246 - FAX 410.750.2588 BUILDING COST CONSULTANTS COST ESTIMATING 13917 - 307A AVENUE PLATTSMOUTH, NEBRASKA 68048 402.298.8280 - FAX 402.298.8280		ROBERT L. SEYMOUR ASSOCIATES AUTOMATIC TRANSPORT ENGINEERING 182 THOMAS JOHNSON DR., SUITE 200 FREDERICK, MARYLAND 21702 301.662.8112 - FAX 301.662.8117 JOHN MILNER ASSOCIATES, INC. CULTURAL RESOURCES CONSULTANT 535 NORTH CHURCH ST. WEST CHESTER, PENNSYLVANIA 19380 610.436.9000 - FAX 610.436.8468		I.D.E.A.S., INC. PLANTREE CONSULTANT 5055 CHORDON RD. KIRTLAND, OHIO 44094 440.256.1800 - FAX 440.256.1801					
ARCHITECT/ENGINEERS: ARCHITECTURE PLANNING ENGINEERING POLT DESIGN GROUP 2215 Conowingo Rd, Suite 101 Bel Air, Maryland 21015-1436 410.803.2141 fax 410.836.6611 www.polt-design.com				Drawing Title MALL / COMMUNITY CENTER SECTIONS Approved: Project Director		Project Title REPLACEMENT COMMUNITY LIVING CENTER Location PERRY POINT VA MEDICAL CENTER Date 06/08/18 Checked CEI Drawn CEI		Project Number 512-173 Building Number 370 Drawing Number S314		Office of Construction and Facilities Management Department of Veterans Affairs	