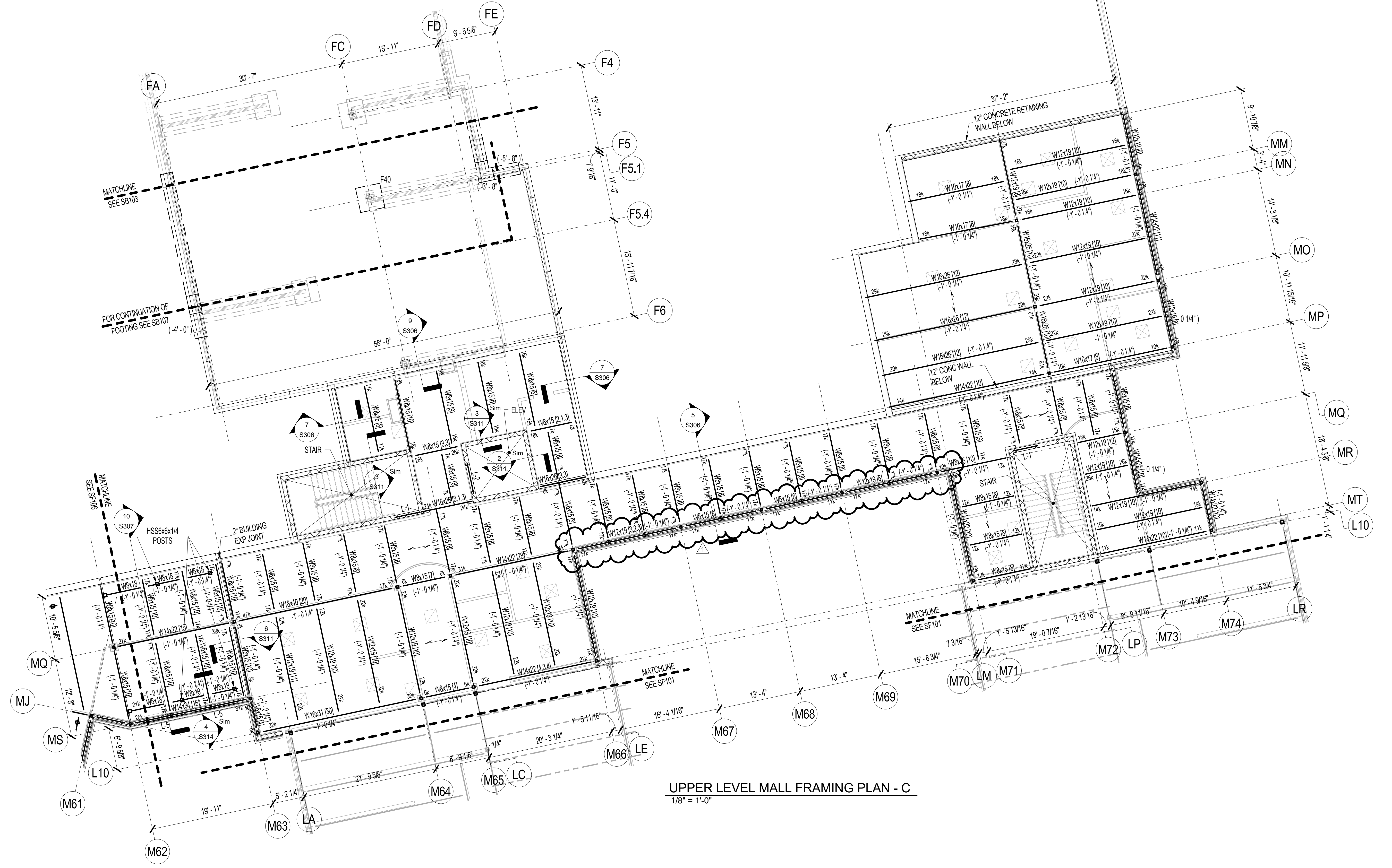


three inches = one foot
 one and one half inches = one foot
 three quarters inch = one foot
 one half inch = one foot
 three eighths inch = one foot
 one quarter inch = one foot
 one eighth inch = one foot

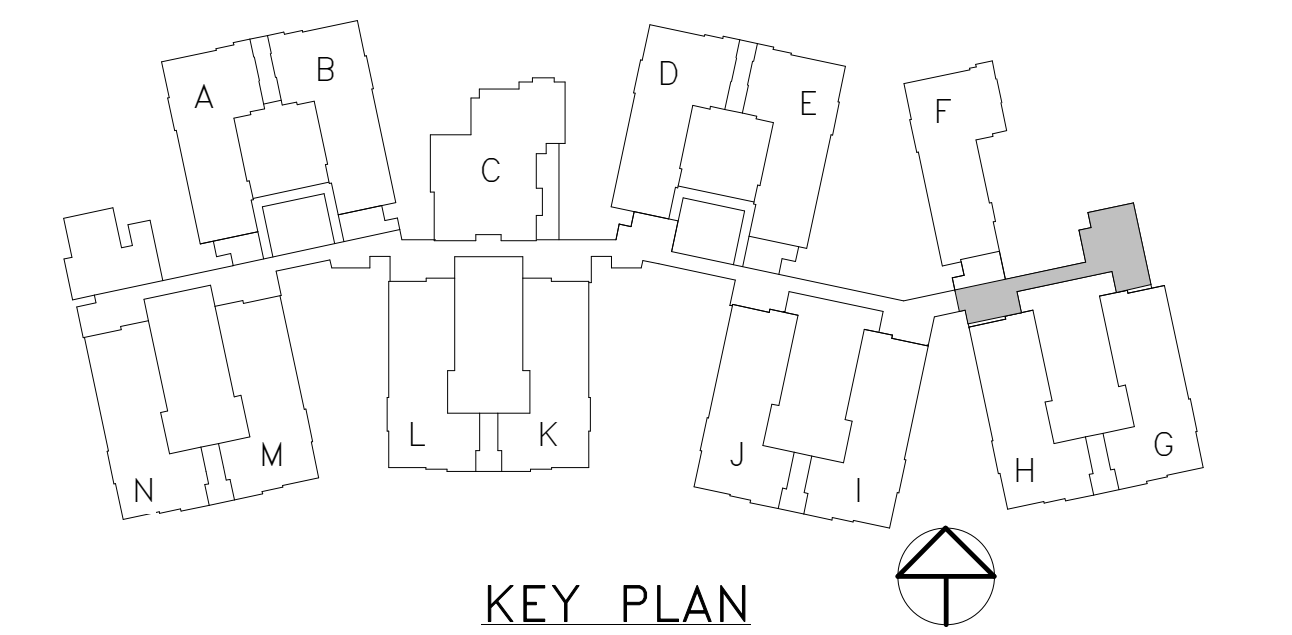
- NOTES:**
- TOP OF FINISHED FLOOR ELEVATION EQUALS 26'-1 1/4", UNO. TOP OF SLAB AT PEOMENADE IS (-0'-7").
 - UPPER LEVEL FRAMED FLOOR CONSTRUCTION IS 3 1/2" LIGHT WEIGHT CONCRETE SLAB REINFORCED WITH 6x6-W2.9xW2.9 WWR OVER 2" DEEP, 20 GAGE GALVANIZED COMPOSITE STEEL DECK. (5 1/2" TOTAL THICKNESS)
 - TOP OF STEEL ELEVATION EQUALS (-5 1/2") UNLESS NOTED THUS: (-X") FROM FINISHED FLOOR.
 - FOR SIZE AND LOCATIONS OF SLAB OPENINGS, CURBS, DEPRESSIONS, SLOPES, FLOOR DRAINS, ETC. NOT SHOWN ON THIS DRAWING, SEE ARCHITECTURAL, MECHANICAL, ELECTRICAL & PLUMBING DRAWINGS. SEE TYPICAL FLOOR OPENING DETAIL FOR ADDITIONAL FRAMING AND / OR REINFORCING AT OPENINGS.
 - SHOWN THUS ON PLAN:
 - A. (-0'-0") INDICATES TOP OF FOOTING ELEVATION.
 - B. <-0'-0"> INDICATES TOP OF CONCRETE WALL / GRADE BEAM ELEVATION.
 - C. [-0'-0"] INDICATES TOP OF PIER ELEVATION.
 - D. [00"] INDICATES NUMBER OF 3/4" x 4" LONG HEADED SHEAR STUD CONNECTORS.
 - E. "P" INDICATES A HSS5x5x1/4 POST ABOVE, UNO.
 - F. "-----" INDICATES DIRECTION OF STEEL DECK SPAN.
 - G. "LF" INDICATES LATERAL FRAME.
 - TOP OF EXTERIOR FOOTINGS SHALL BE (-2'-0"), UNO. TOP OF INTERIOR FOOTINGS SHALL BE (-8"), UNO. TOP OF PIERS SHALL BE (-8"), UNO.
 - FOR TYPICAL DETAILS SEE SHEETS S401 THROUGH S405, FOR COLUMN & PIER SCHEDULES SEE SHEET S705.
 - REACTIONS SHOWNH INCLUDE BALST DESIGN LOADS (5/24/2016).

FOOTING SCHEDULE (3KSF)

MARK	LENGTH	WIDTH	THICKNESS	REINFORCEMENT (BOT UNO)	REMARKS
F30	3'-0"	3'-0"	12"	4#5 EW BOT	
F40	4'-0"	4'-0"	12"	4#5 EW BOT	
F46	4'-6"	4'-6"	12"	4#5 EW BOT	
F50	5'-0"	5'-0"	12"	7#4 EW BOT	
F60	6'-0"	6'-0"	14"	7#5 EW BOT	
F66	6'-6"	6'-6"	16"	8#5 EW BOT	
F70T	7'-0"	7'-0"	17"	6#6 EW-B & 6#4 EW-T	
F80	8'-0"	8'-0"	19"	6#7 EW BOT	
F108/99	10'-8"	10'-9"	24"	11#7 EW BOT	
F149/100	14'-9"	10'-0"	34"	13#9 EW BOT	



UPPER LEVEL MALL FRAMING PLAN - C
 1/8" = 1'-0"



FINAL CONSTRUCTION DOCUMENTS
 FULLY SPRINKLERED

CONSULTANTS: BURDETTE KOEHLER MURPHY & ASSOCIATES, INC. MECHANICAL/ELECTRICAL CONSULTING ENGINEERING 1416 CLARKVIEW ROAD, SUITE 500 BALTIMORE, MARYLAND 21220 410.323.0600 - FAX 410.377.2543 CENTURY ENGINEERING, INC. CIVIL & STRUCTURAL ENGINEERING 15718 GILROY ROAD HUNT VALLEY, MARYLAND 21031 443.589.2400 - FAX 443.589.2401		KOFFEL ASSOCIATES, INC. FIRE PROTECTION ENGINEERING 8815 CENTRE PARK DR., SUITE 200 COLUMBIA, MARYLAND 21045 410.760.2246 - FAX 410.760.2068 BUILDING COST CONSULTANTS COST ESTIMATING 12917 - 307A AVENUE PLATTSMOUTH, NEBRASKA 68048 402.298.8290 - FAX 402.298.8290		ROBERT L. SEYMOUR ASSOCIATES AUTOMATIC TRANSPORT CONSULTANT 182 THOMAS JOHNSON DR., SUITE 200 FREDERICK, MARYLAND 21702 301.662.8112 - FAX 301.662.8117 JOHN MILNER ASSOCIATES, INC. CULTURAL RESOURCES CONSULTANT 633 NORTH CHURCH ST. WEST CHESTER, PENNSYLVANIA 19380 610.436.9000 - FAX 610.436.8468		I.D.E.A.S., INC. PLANTREE CONSULTANT 8085 CHORDON RD. KIRTLAND, OHIO 44094 440.266.1880 - FAX 440.266.1881		ARCHITECT/ENGINEERS: ARCHITECTURE PLANNING ENGINEERING POLT DESIGN GROUP 2215 Conowingo Rd., Suite 101 Bel Air, Maryland 21015-1436 www.polt-design.com 410.803.2141 fax 410.836.6611		Drawing Title UPPER LEVEL MALL FRAMING PLAN - C Approved: Project Director		Project Title REPLACEMENT COMMUNITY LIVING CENTER Location PERRY POINT VA MEDICAL CENTER Date 06/08/18 Checked CEI Drawn CEI		Project Number 512-173 Building Number 370 Drawing Number SF107		Office of Construction and Facilities Management Department of Veterans Affairs	
---	--	---	--	---	--	--	--	--	--	---	--	---	--	---	--	--	--