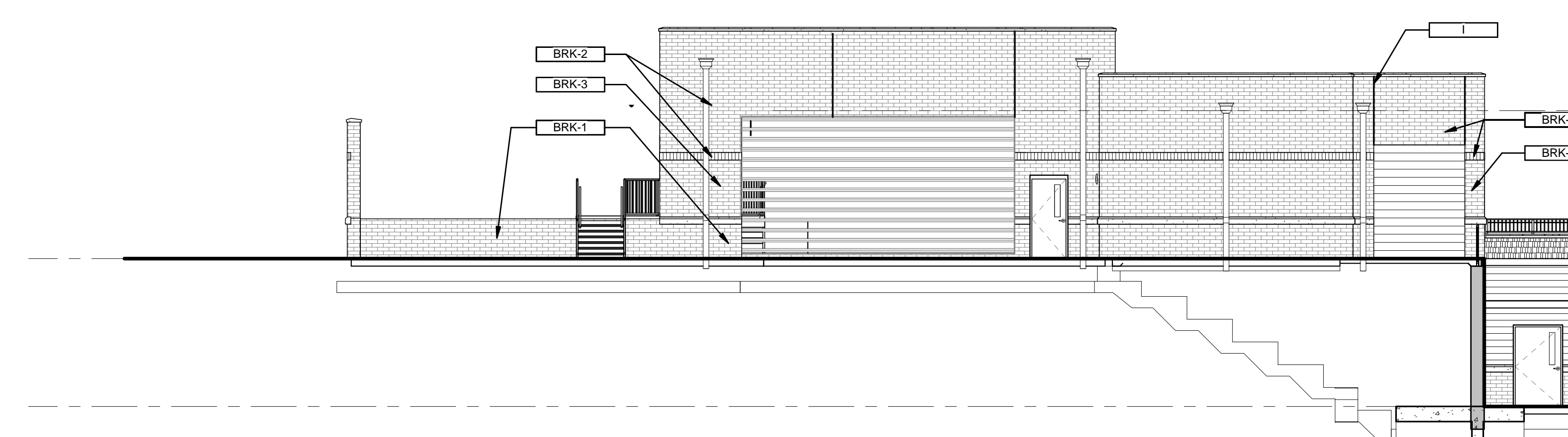
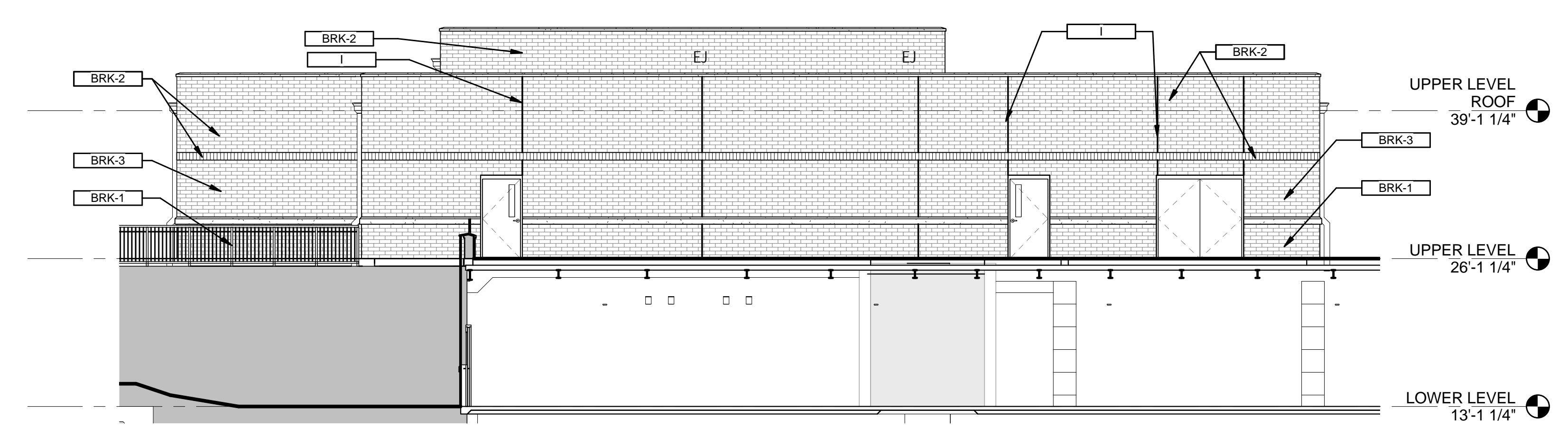


three inches = one foot
 one and one half inches = one foot
 one inch = one foot
 three quarters inch = one foot
 one half inch = one foot
 three eighths inch = one foot
 one eighth inch = one foot

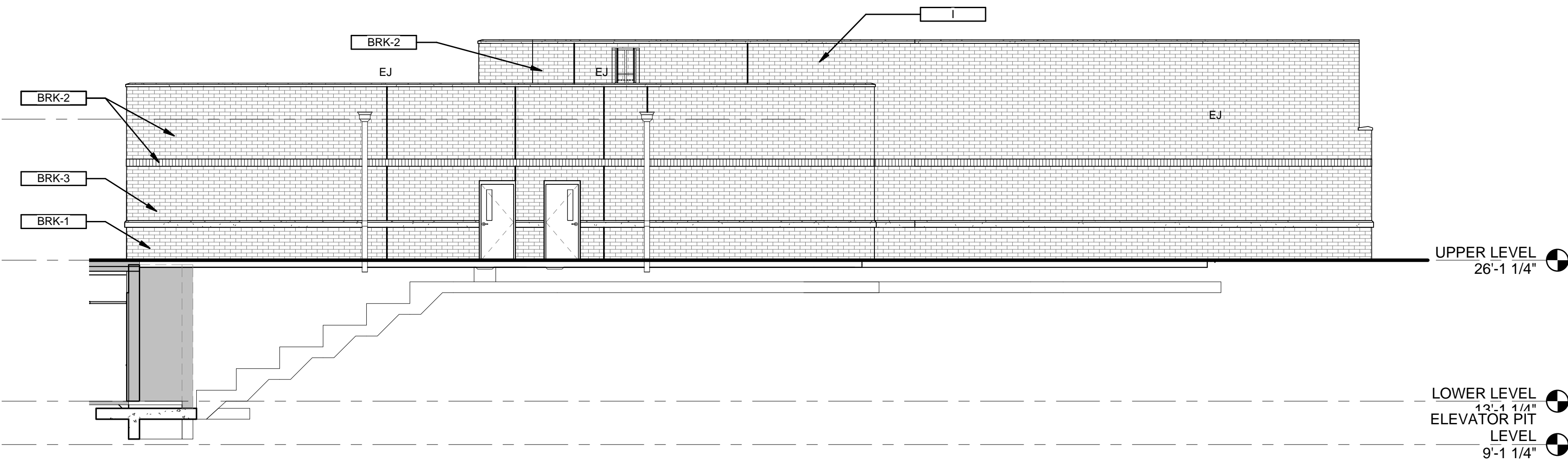
A
 B
 C
 D
 E
 F



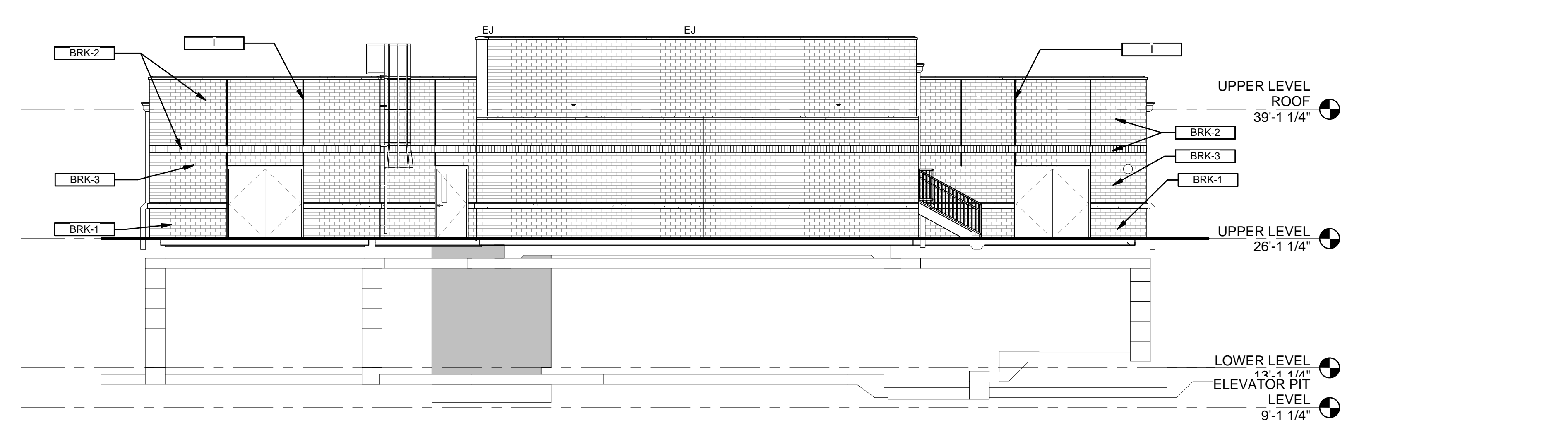
1
 AS215
 EXTERIOR FINISHES - MECHANICAL
 BUILDING - WEST
 1/8" = 1'-0"



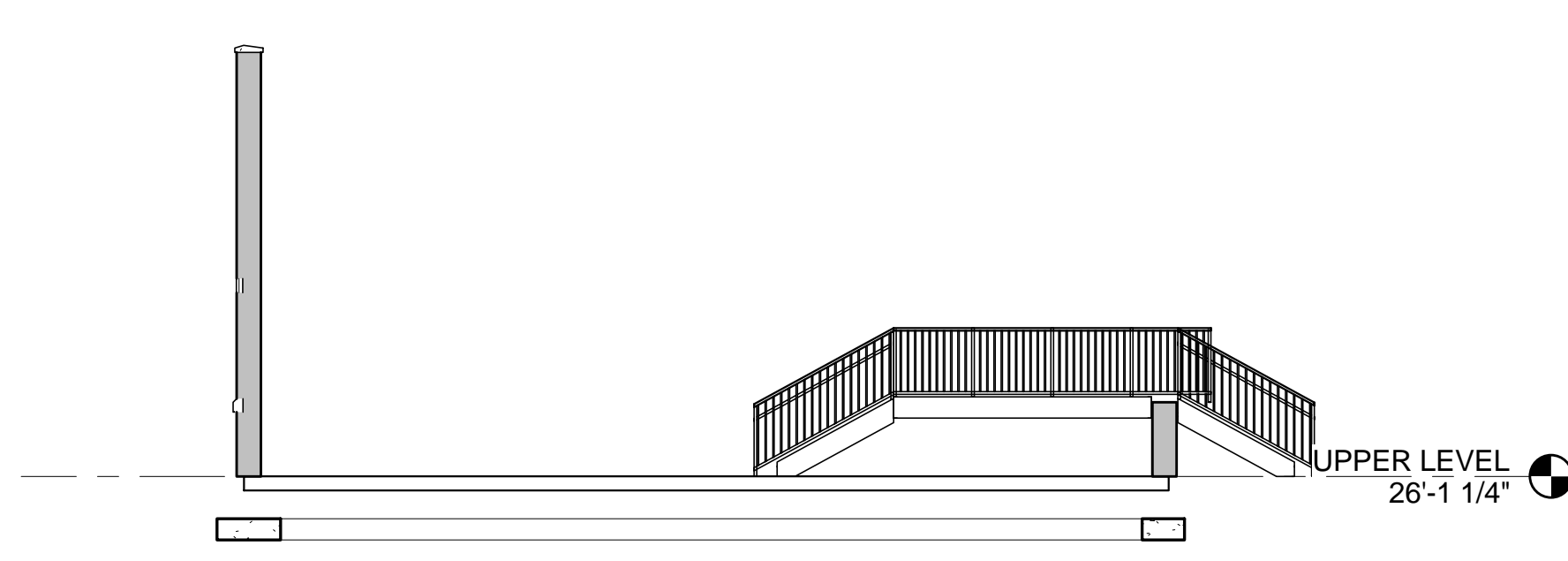
2
 AS215
 EXTERIOR FINISHES - MECHANICAL
 BUILDING - SOUTH
 1/8" = 1'-0"



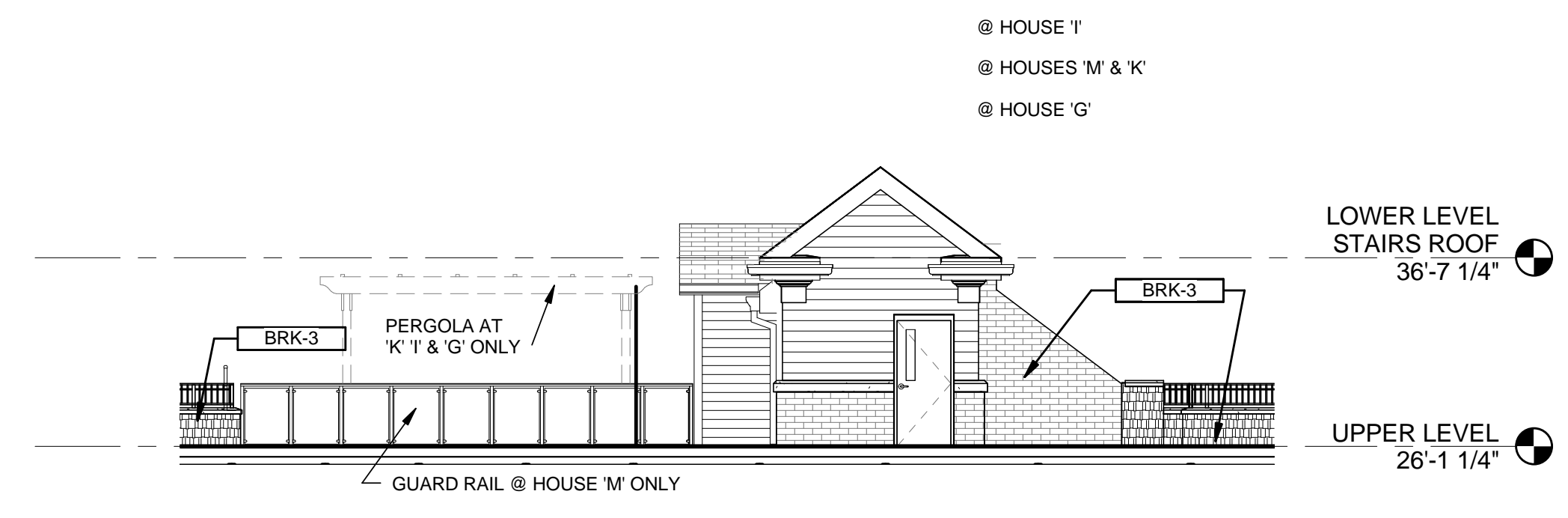
3
 AS215
 EXTERIOR FINISHES - MECHANICAL
 BUILDING - PARTIAL EAST
 1/8" = 1'-0"



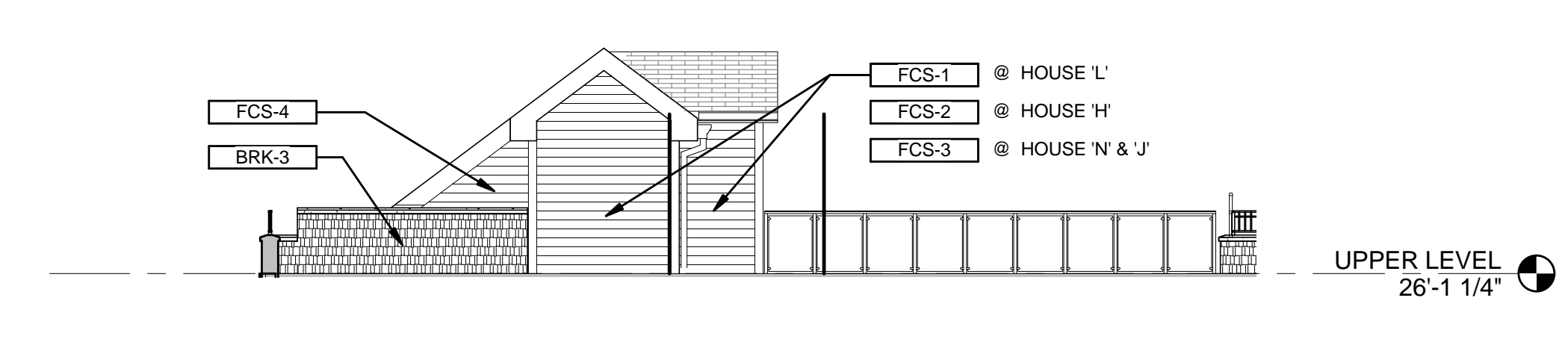
4
 AS215
 EXTERIOR FINISHES - MECHANICAL
 BUILDING - NORTH
 1/8" = 1'-0"



5
 AS215
 EXTERIOR FINISHES - MECHANICAL
 BUILDING - NORTH - FUEL CONTAINMENT
 1/8" = 1'-0"

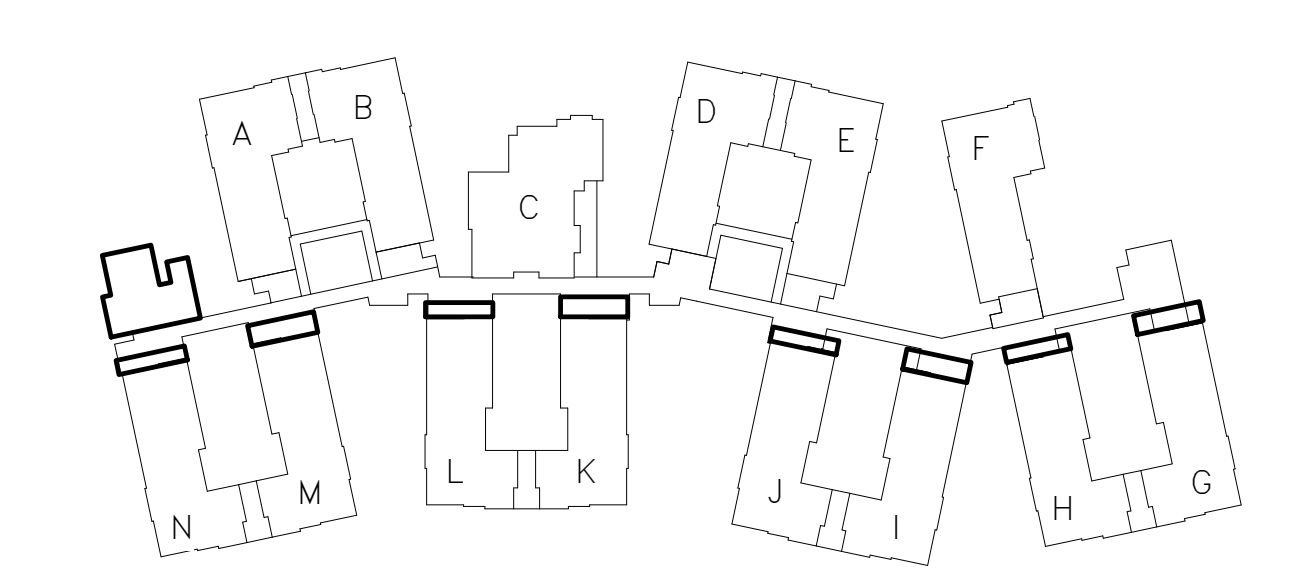


6
 AS215
 EXTERIOR FINISHES - TYP. LOWER LEVEL
 STAIRS AT G, I, K & M AT PROMENADE
 - NORTH ELEVATION
 1/8" = 1'-0"



7
 AS215
 EXTERIOR FINISHES - TYP. LOWER LEVEL
 HOUSES H, J, L & N AT PROMENADE -
 NORTH ELEVATION
 1/8" = 1'-0"

EXTERIOR FINISHES	
FINISH	DESCRIPTION
BRK-1	REDLAND BRICK - BAYSHORE w/ FLAMINGO BRIXMENT - RW-5
BRK-2	REDLAND BRICK - BAYSHORE w/ FLAMINGO BRIXMENT - SOFT WHITE
BRK-3	REDLAND BRICK - RUSTIQUE w/ FLAMINGO BRIXMENT - SOFT WHITE
FCS-1	FIBER CEMENT LAP SIDING - PAINT COLOR - BLUE
FCS-2	FIBER CEMENT LAP SIDING - PAINT COLOR - GREEN
FCS-3	FIBER CEMENT LAP SIDING - PAINT COLOR - BEIGE
FCS-4	FIBER CEMENT SHINGLE SIDING - PAINT COLOR - BEIGE
SILL	ROCKCAST
TRM	SUBSTRATE VARIES - PAINT TO MATCH - PREFINISHED MTL.



KEY PLAN

FINAL CONSTRUCTION DOCUMENTS
 FULLY SPRINKLERED

CONSULTANTS: BURDETTE KOEHLER MURPHY & ASSOCIATES, INC. MECHANICAL / ELECTRICAL CONSULTING ENGINEERING 1416 CLARKVIEW ROAD, SUITE 500 BALTIMORE, MARYLAND 21209 410.323.0600 - FAX 410.377.2543 CENTURY ENGINEERING, INC. CIVIL & STRUCTURAL ENGINEERING 10710 GLENN ROAD HUNT VALLEY, MARYLAND 21031 443.589.2400 - FAX 443.589.2401				KOFFEL ASSOCIATES, INC. FIRE PROTECTION ENGINEERING 8815 CENTRE PARK DR., SUITE 200 COLUMBIA, MARYLAND 21045 410.762.0204 - FAX 410.762.0288		ROBERT L. SEYMOUR & ASSOCIATES, INC. VERTICAL TRANSPORTATION CONSULTANTS 182 THOMAS JOHNSON DR., SUITE 200 FREDERICK, MARYLAND 21702 301.662.8112 - FAX 301.662.8117		I.D.E.A.S., INC. PLANTREE CONSULTANT 8655 CHOROKAN RD. KIRTLAND, OHIO 44294 440.254.1990 - FAX 440.254.1981					
BUILDING COST CONSULTANTS COST ESTIMATING 12917 - 30TH AVENUE PLATTSMOUTH, NEBRASKA 68048 402.298.8260 - FAX 402.298.8290		JOHN MILNER ASSOCIATES, INC. CIVIL & STRUCTURAL ENGINEERING CONSULTANT 533 NORTH CHURCH STREET WEST CHESTER, PENNSYLVANIA 19380 610.424.9000 - FAX 610.424.8448		ARCHITECT/ENGINEERS: ARCHITECTURE PLANNING ENGINEERING POLT DESIGN GROUP 2215 Conowingo Rd., Suite 101 Bel Air, Maryland 21015-1436 410.803.2141 fax 410.836.6611 www.polt-design.com		Drawing Title EXTERIOR FINISHES - MECHANICAL BUILDING Approved: Project Director		Project Title REPLACEMENT COMMUNITY LIVING CENTER Location PERRY POINT VA MEDICAL CENTER Date 06/08/18 Checked CAJ Drawn JKI/CE/BJP/WP/DW/DK		Project Number 512-173 Building Number 370 Drawing Number AS215		Office of Construction and Facilities Management Department of Veterans Affairs	