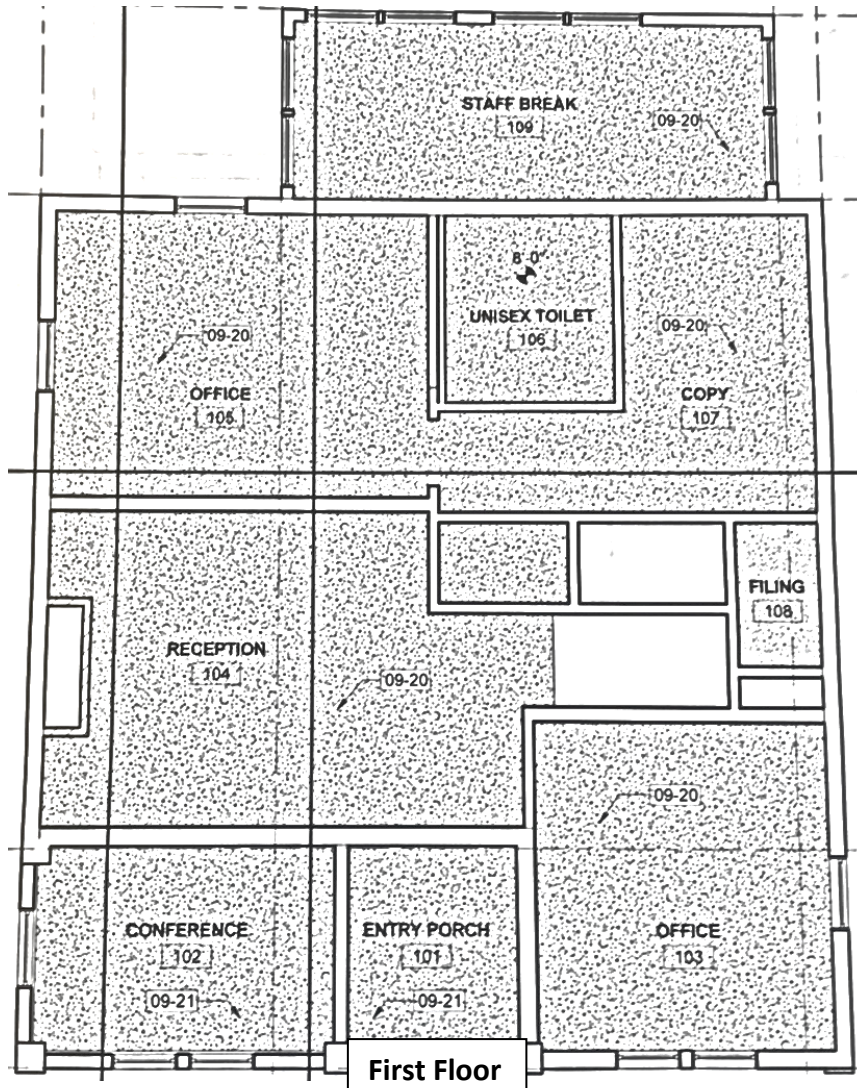
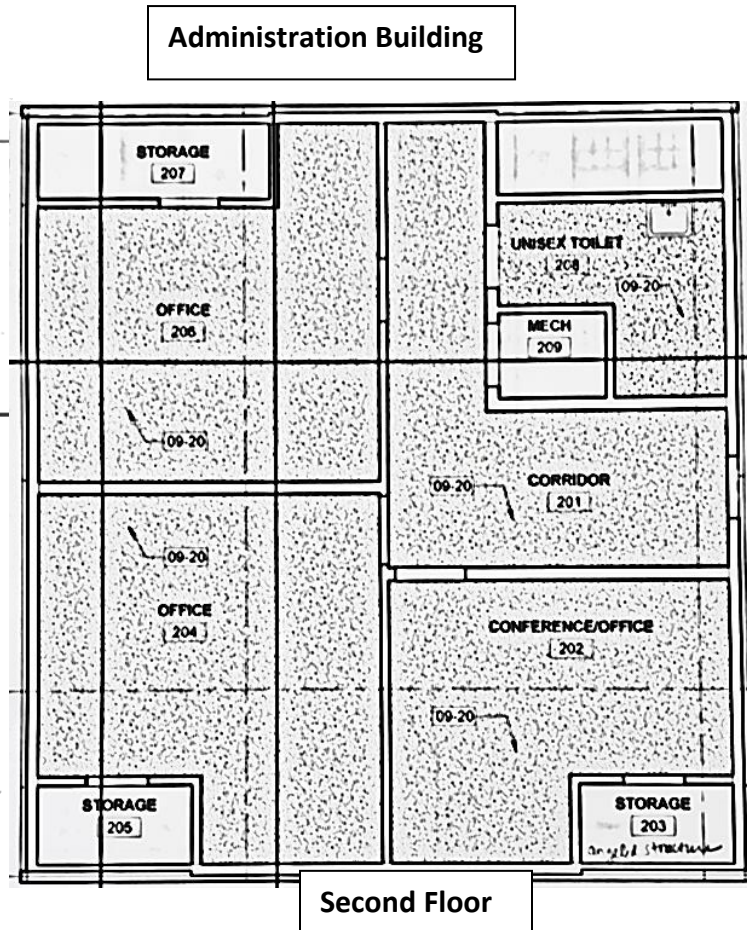


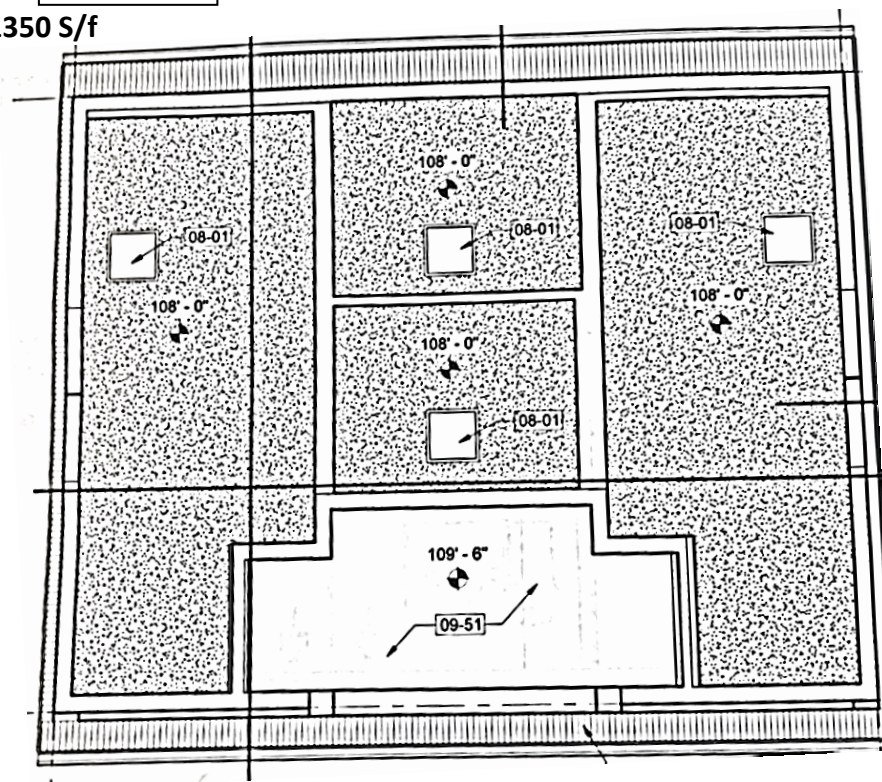
## Appendix A: Floor Plan for Administration Building and Restroom Building



1st floor approx. 1350 S/f



2nd floor approx. 1150 s/f



Inside square feet of the men's and women's restrooms are 221 sq. ft. The Family restroom is 97 sq. ft

## Appendix B: BATHROOM INSPECTION SHEET

BATHROOM INSPECTION SHEET																				
OS-1.1A CEMETRY PUBLIC RESTROOM ARE INSPECTED DAILY AND DETERMINED TO BE CLEAN AND SUPPLIED IN ACORDANCE WITH THE RESTROOM CHECKLIST																				
RESTROOMS ARE TO BE INSPECTED DAILY ON THE DAYS THEY ARE OPEN TO THE PUBLIC.																				
MONTH/YEAR:	Week 1					Week 2					Week 3					Week 4				
	M	T	W	T	F	M	T	W	T	F	M	T	W	T	F	M	T	W	T	F
<b>CLEAN DAILY</b>																				
MIRRORS																				
SINKS																				
TOILETS																				
FLOORS																				
TRASH EMPTIED																				
<b>CHECK DAILY (REPLENISH AS NECESSARY)</b>																				
TOWELS/TOILET PAPER																				
SOAP, AIR FRESHNER																				
<b>CLEAN MONTHLY (3<sup>rd</sup> Wednesday of each month)</b>																				
HEAT/AIR VENTS																				
WALLS/ DOORS																				
STALL PARTITIONS																				
AIR FRESHENER DISPENSER																				
<b>COR / SUPERVISOR INSPECTION</b>	YES/ NO					YES/NO					YES/NO					YES/ NO				
WORK COMPLETED																				
WORK INSPECTED BY																				
Comments:																				