

three inches = one foot

one and one half inches = one foot

one inch = one foot

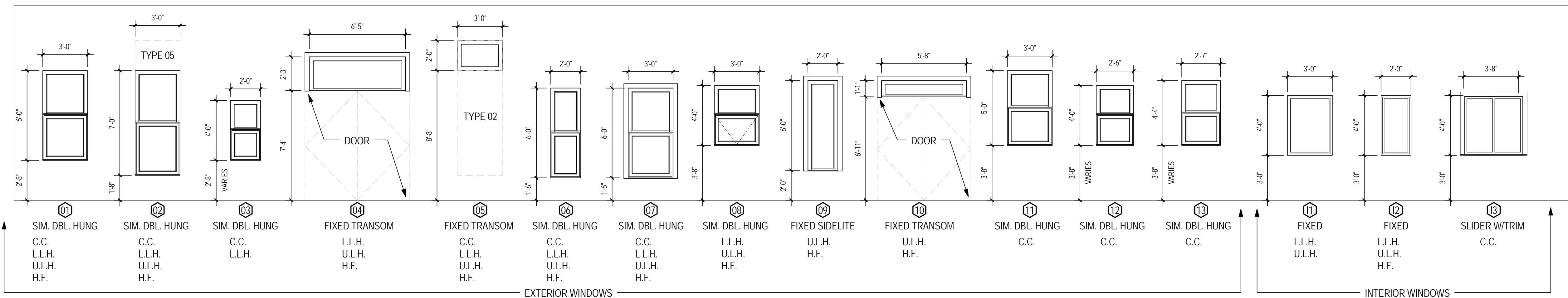
three quarters inch = one foot

one half inch = one foot

three eighths inch = one foot

one quarter inch = one foot

one eighth inch = one foot



1 WINDOW TYPES  
1/4" = 1'-0"

2 LOUVER TYPES  
1/4" = 1'-0"

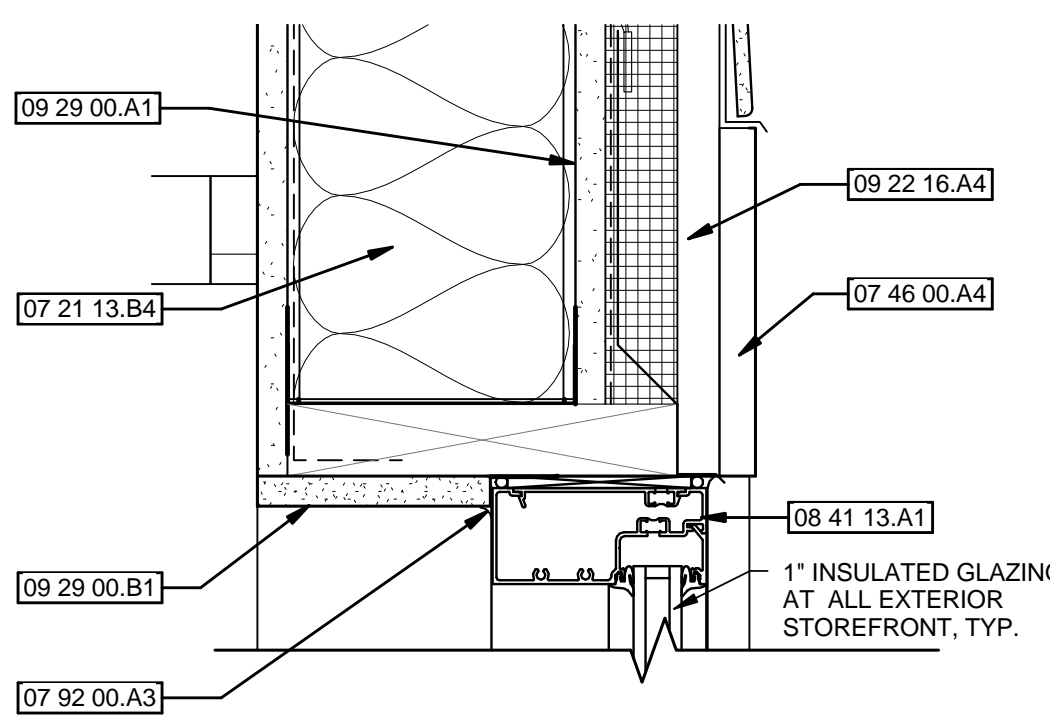
6 TYPICAL LOUVER HEAD  
1 1/2" = 1'-0"

WINDOW SCHEDULE							
No.	DESCRIPTION	HEIGHT	WIDTH	SILL HEIGHT	FRAME FINISH	FRAME MATERIAL	GLAZING
01	SIMULATED DOUBLE HUNG	6'-0"	3'-0"	2'-8"	LT BRNZ	ALUM	LAM
02	SIMULATED DOUBLE HUNG	7'-0"	3'-0"	1'-8"	LT BRNZ	ALUM	LAM
03	SIMULATED DOUBLE HUNG	4'-0"	3'-0"	2'-0"	LT BRNZ	ALUM	LAM
04	TRANSOM	2'-3"	6'-8"	7'-4"	MATCH	ALUM	LAM
05	TRANSOM	2'-0"	3'-0"	8'-8"	LT BRNZ	ALUM	LAM
06	SIMULATED DOUBLE HUNG	6'-0"	2'-0"	1'-6"	LT BRNZ	ALUM	LAM
07	SIMULATED DOUBLE HUNG	6'-0"	3'-0"	1'-6"	LT BRNZ	ALUM	LAM
08	DOUBLE HUNG	4'-0"	3'-0"	3'-8"	LT BRNZ	ALUM	LAM
09	SIDE LITE	6'-0"	2'-0"	2'-0"	MATCH	ALUM	LAM
10	TRANSOM	1'-1"	5'-8"	6'-11"	MATCH	ALUM	LAM
11	SIMULATED DOUBLE HUNG	5'-0"	3'-0"	3'-8"	LT BRNZ	ALUM	LAM
12	SIMULATED DOUBLE HUNG	4'-0"	2'-6"	LT BRNZ	ALUM	LAM	
13	SIMULATED DOUBLE HUNG	4'-4"	2'-7"	LT BRNZ	ALUM	LAM	
15		5'-0"	2'-6"	3'-8"	LT BRNZ	ALUM	LAM
11	FIXED INTERIOR CASEMENT	4'-0"	3'-0"	3'-0"	MATCH	WD	TMPRD
12	FIXED INTERIOR CASEMENT	4'-0"	2'-0"	3'-0"	MATCH	WD	TMPRD
13	SLIDING PASS THRU	4'-0"	4'-0"		MATCH	WD	TMPRD

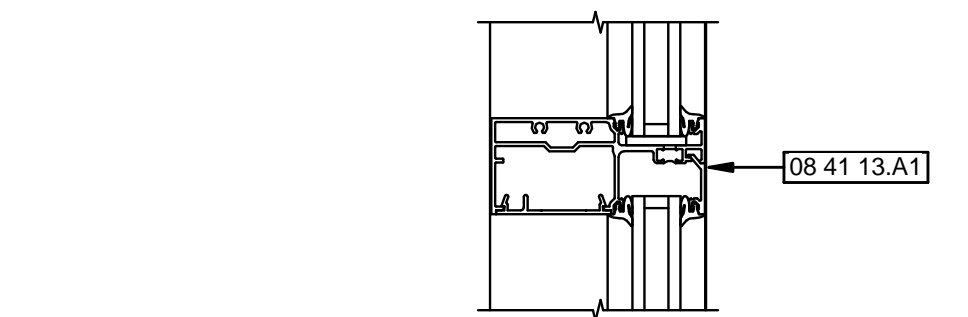
KEYNOTE LEGEND	
DIVISION	DESCRIPTION
04 20 00.A1	UTILITY BRICK - 3/8" JOINT - RUNNING BOND PATTERN - SEE EXTERIOR FINISHES SHEET FOR BRICK COLOR SCHEMES
04 20 00.A3	UTILITY BRICK - SOLDIER COURSE - 3/8" JOINT - SEE EXTERIOR FINISHES SHEET FOR BRICK COLOR SCHEMES
04 72 00.A1	PRECAST CONCRETE SILL - PROFILE 1 - AT BRICK OVER BRICK WALLS
04 72 00.A3	CAST STONE WATER TABLE
05 12 00.A1	LINTELS - SEE STRUCTURAL DRAWINGS
05 40 00.B6	6" - 16 GAUGE METAL STUDS
06 10 00.C2	(2) 8" STRUCTURAL METAL STUD HEADER
06 10 00.B5	2 X TREATED WOOD BLOCKING - TYP.
06 10 00.B7	1 X TREATED WOOD BLOCKING - TYP.
06 10 00.C5	FLAME RESISTANT WOOD BLOCKING
06 10 00.C2	SHIM AS NEEDED
06 10 00.C5	2X FLAME RESISTANT WOOD BUCK
07 21 13.A1	1 1/2" RIGID INSULATION - THERMAL
07 21 13.B4	6" BATT INSULATION - R19
07 21 13.C1	VAPOR BARRIER
07 21 13.C2	COMMERCIAL GRADE EXTERIOR AIR AND WATER BARRIER
07 46 00.A1	EXTERIOR FIBER CEMENT SIDING BOARD 7" EXPOSURE - SEE EXTERIOR FINISHES SHEET FOR COLOR SCHEMES
07 46 00.A2	PRE FINISHED EXTERIOR FIBER CEMENT TRIM
07 46 00.A4	5/4" X PREFINISHED FIBER CEMENT TRIM
07 46 00.A8	1X PREFINISHED FIBER CEMENT TRIM
07 60 00.A1	SILL FLASHING WITH DRIP EDGE EMBEDDED IN SEALANT - SEAL PENETRATIONS
07 60 00.A10	DRIP EDGE
07 60 00.A11	FLASHING
07 60 00.A12	FULL HEAD WEEP VENT SET ON FLASHING
07 60 00.A14	FLASHING TERMINATION BAR, TOP EDGE SEALED
07 92 00.A2	ELASTOMERIC SEALANT - PAINTABLE
07 92 00.A3	SEALANT - COLORED TO MATCH STOREFRONT & WINDOW FRAMES
07 92 00.A4	CAULK - PAINTABLE
07 92 00.A5	MANUFACTURER'S APPROVED SEALANT W/ BACKER ROD
08 41 13.A1	2" X 4 1/2" THERMALLY BROKEN ALUMINUM STOREFRONT SYSTEM - FRONT GLAZED
08 41 13.A2	2 1/2" X 7 1/2" ALUMINUM CURTAINWALL SYSTEM
08 80 00.A2	LOW E TEMPERED GLASS
08 80 00.B1	LAMINATED GLASS PANELS
08 90 00.A1	LOUVERS - SEE SHEET AS608 AND MECHANICAL DRAWINGS
09 22 16.A4	7/8" HAT CHANNEL
09 29 00.A1	5/8" EXTERIOR GYPSUM SHEATHING
09 29 00.B1	5/8" GYPSUM WALLBOARD
12 36 00.A4	WINDOW SILL - SOLID SURFACE
C	1" AIR SPACE
CS-8	WATER TABLE 1 (SEE 1/ AS610)
P	BUILDING WRAP OVER EXTERIOR SHEATHING - TYP.

STOREFRONT SCHEDULE					
MARK	COUNT	AFF	HEIGHT	WIDTH	COMMENTS
ISF-1	1		3'-6"	5'-6"	4'-2 1/2"
ISF-2	1		3'-6"	5'-6"	10'-7 3/8"
ISF-3	1		3'-6"	5'-6"	17'-7 1/2"
ISF-4	1		3'-6"	5'-6"	5'-0 3/4"
SF-01	6	0"	8'-8"	6'-0"	
SF-02	1	0"	8'-8"	6'-4"	
SF-03	1	0"	8'-8"	4'-0"	
SF-04	1	3'-8"	5'-0"	6'-2 1/8"	
SF-05	7	8"	8'-0"	6'-0"	
SF-06	2	0"	8'-8"	6'-4"	
SF-07	1	0"	8'-8"	19'-0"	
SF-08	2	0"	8'-8"	4'-4"	
SF-09	2	8"	8'-0"	6'-0"	
SF-10	1	8"	8'-0"	7'-0"	
SF-11	1	0"	8'-8"	4'-4"	
SF-12	1	0"	9'-0"	6'-6 7/8"	
SF-12A	1	0"	7'-2"	4'-9 1/2"	
SF-13	1	0"	9'-0"	6'-5"	
SF-13A	1	0"	9'-0"	6'-4 3/4"	
SF-14	1	0"	9'-0"	11'-0 1/4"	
SF-14A	1	0"	9'-0"	10'-9"	
SF-15	1	0"	9'-0"	8'-7 1/4"	
SF-16	1	0"	9'-0"	7'-2 3/4"	
SF-17	1	0"	9'-0"	14'-9 1/4"	
SF-18	1	0"	8'-8"	8'-4"	
SF-19	1	0"	8'-8"	4'-4"	
SF-20	1	8"	8'-0"	6'-2"	
SF-21	7	0"	8'-8"	3'-8"	
SF-22	19	0"	8'-8"	10'-8"	
SF-23	7	0"	8'-8"	3'-8"	
SF-24	10	0"	8'-8"	7'-4"	
SF-25	1	0"	8'-8"	6'-4"	
SF-26	6	8"	8'-0"	6'-0"	
SF-27	6	3'-8"	5'-0"	6'-0"	
SF-28	2	2'-4"	7'-0"	7'-4"	
SF-29	1	2'-4"	7'-0"	3'-9"	
SF-30	1	2'-4"	7'-0"	10'-8"	
SF-31	8	8"	3'-4"	6'-0"	
SF-32	1	0"	4'-0"	19'-0"	
SF-33	2	5"	4'-3"	6'-0"	
SF-34	1	5"	4'-3"	7'-0"	
SF-35	8	1'-4"	2'-8"	6'-0"	
SF-36	1	0"	9'-0"	45'-10 3/8"	
SF-37	1	0"	9'-0"	45'-10 3/8"	

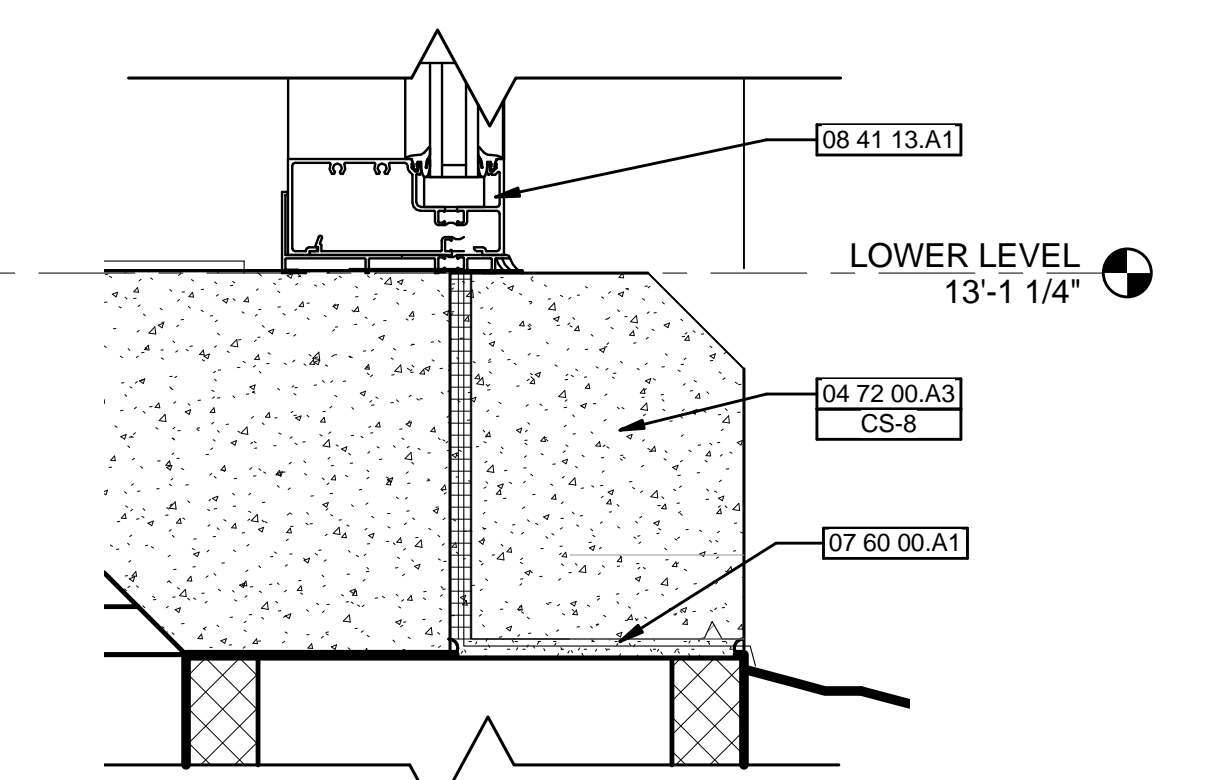
SEE SHEET AS606 FOR SF-36 AND SF-37 ELEVATIONS.  
SEE SHEET AS607 FOR ALL REMAINING STOREFRONT ELEVATIONS.



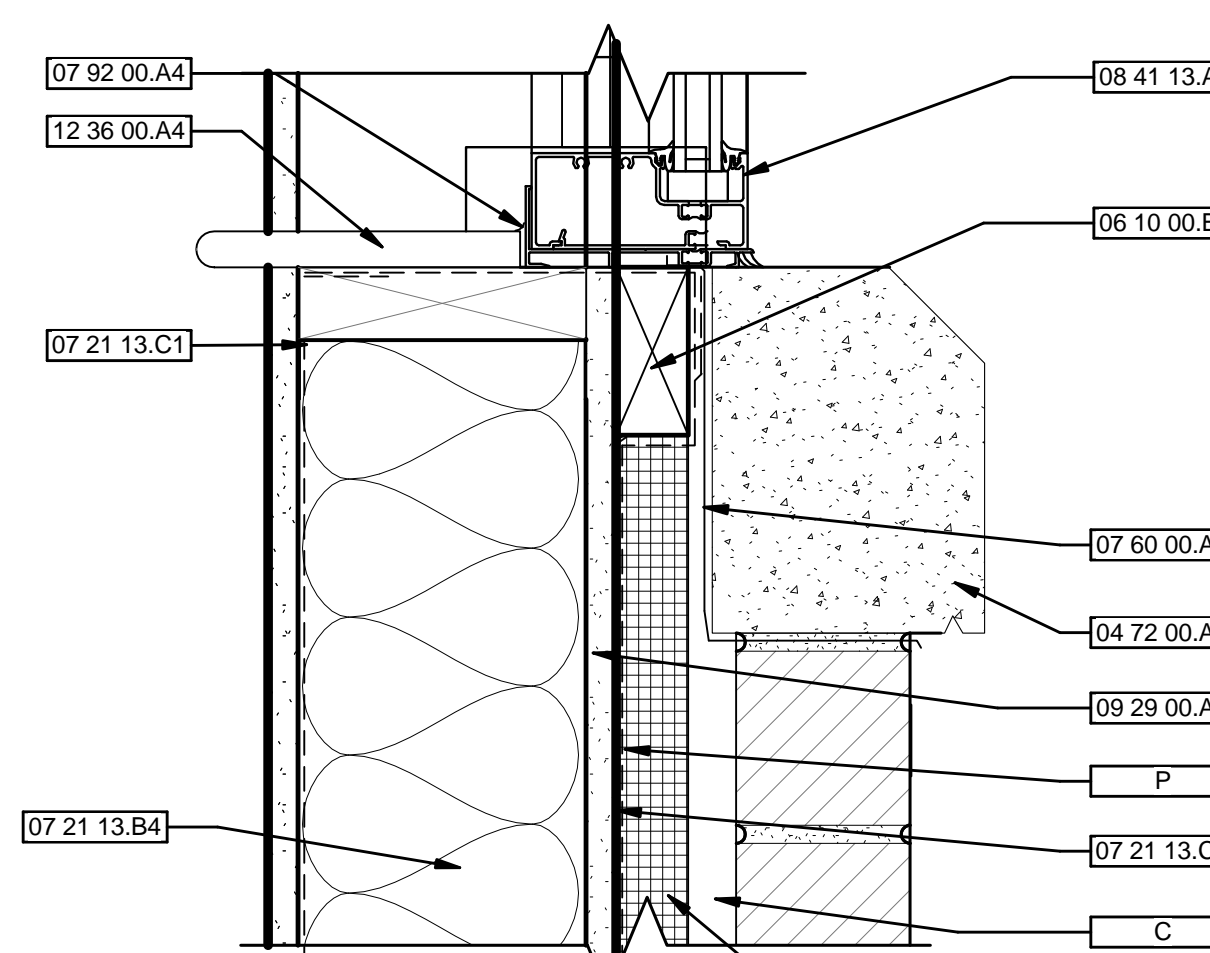
3 4 1/2" STOREFRONT HEAD - DETAIL  
3" = 1'-0"



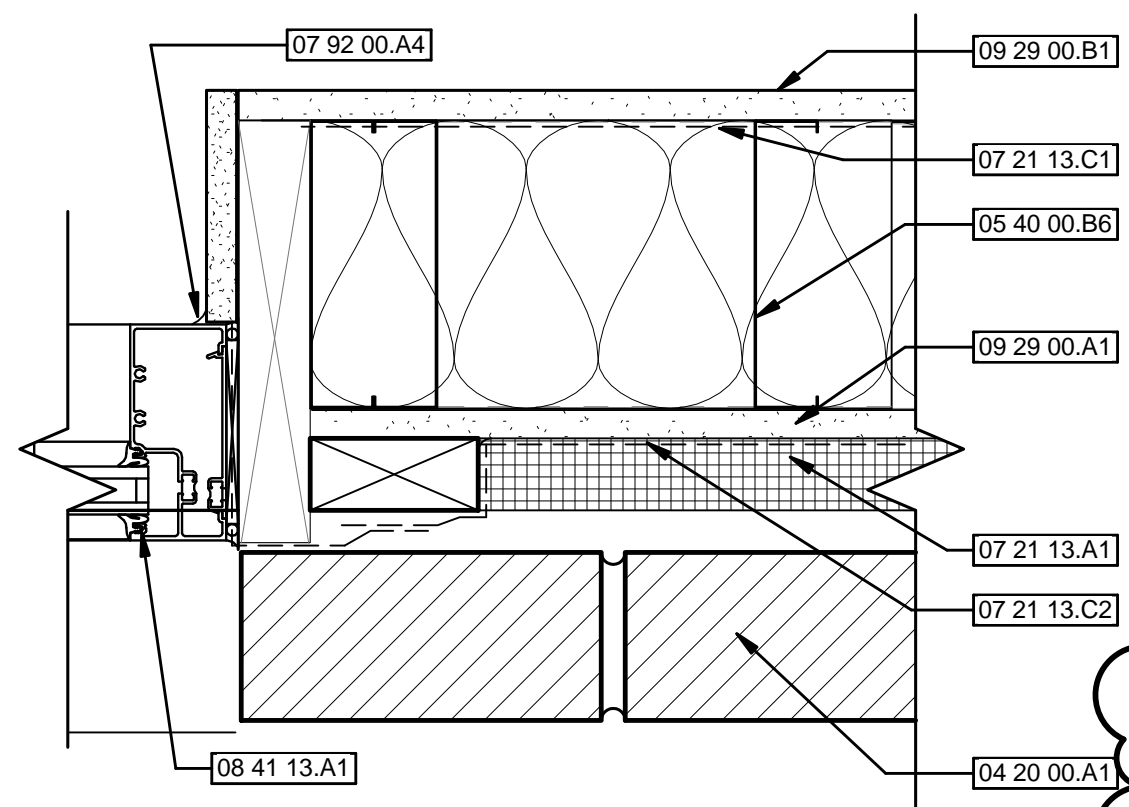
4 TYPICAL 4 1/2" STOREFRONT HORIZONTAL MULLION  
3" = 1'-0"



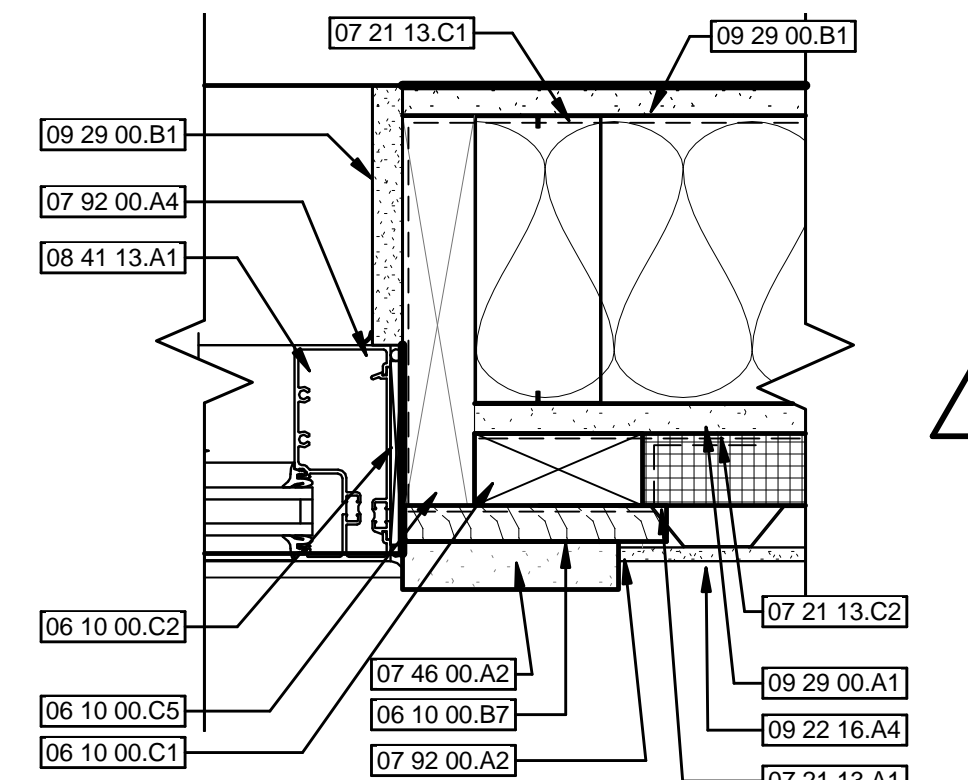
5 STOREFRONT SILL DETAIL - A  
3" = 1'-0"



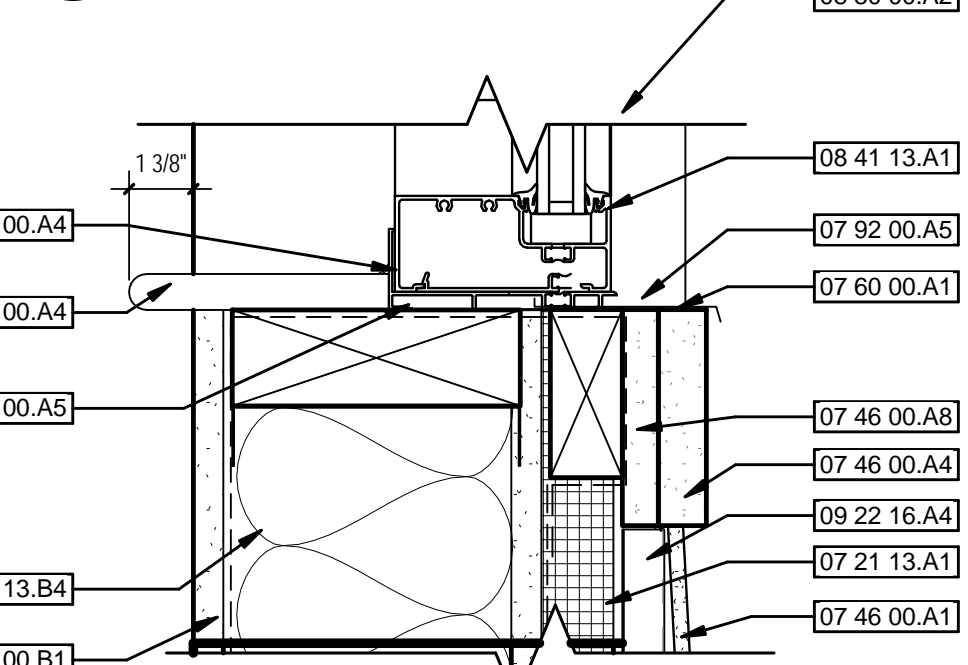
12 STOREFRONT SILL DETAIL - C  
3" = 1'-0"



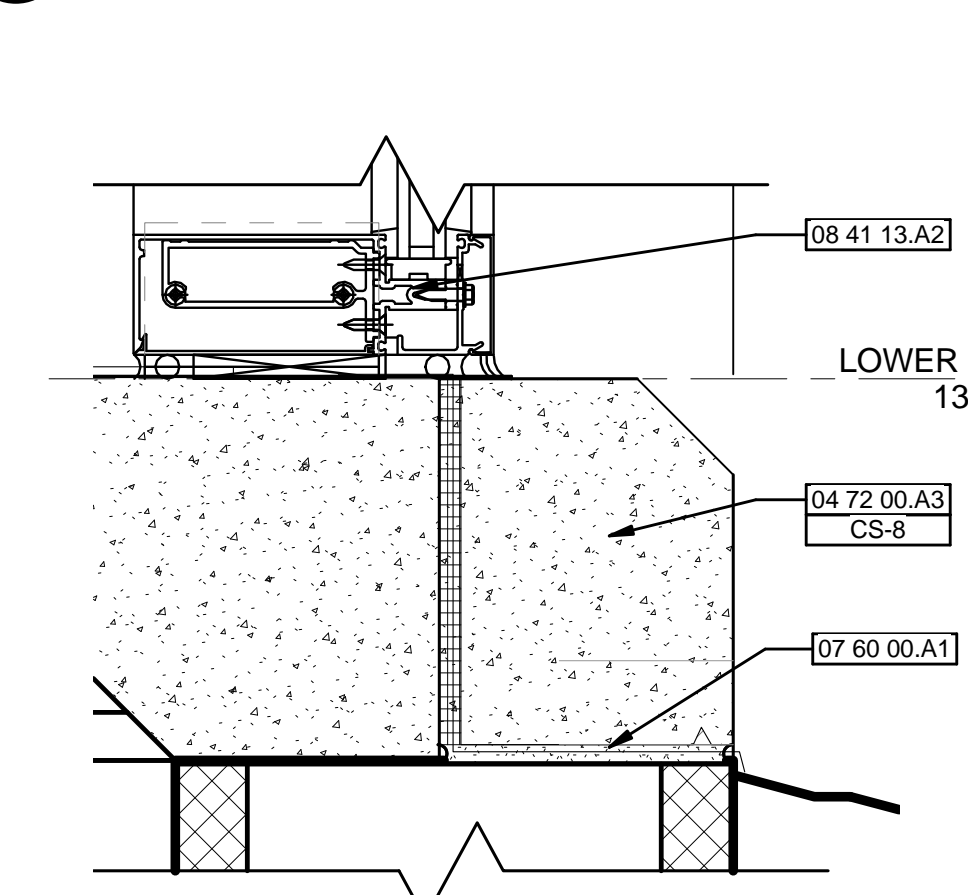
8 STOREFRONT JAM DETAIL - A  
3" = 1'-0"



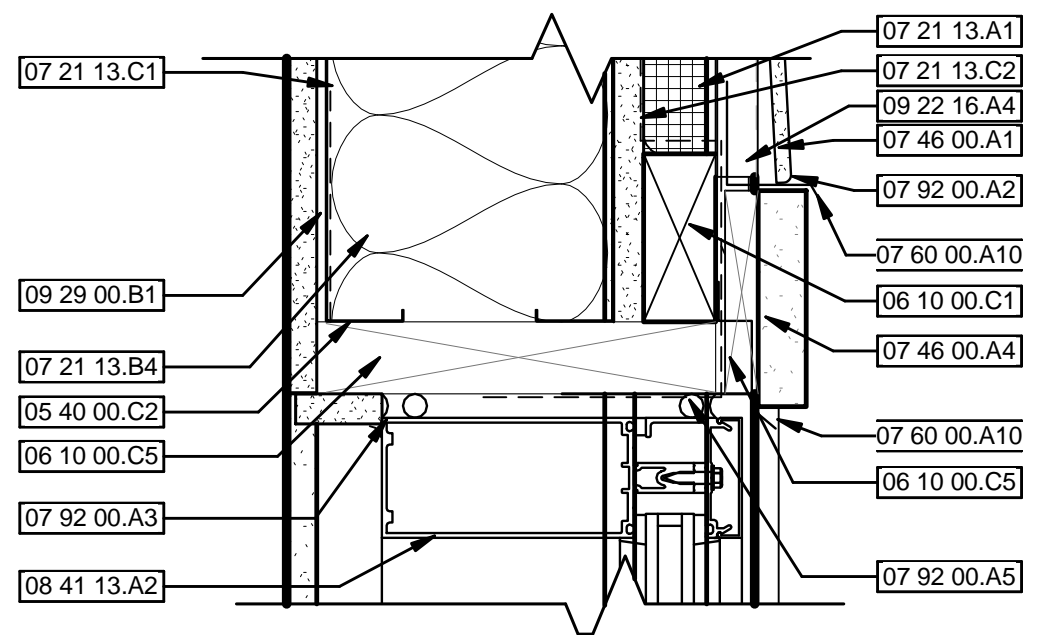
9 STOREFRONT JAM DETAIL - B  
3" = 1'-0"



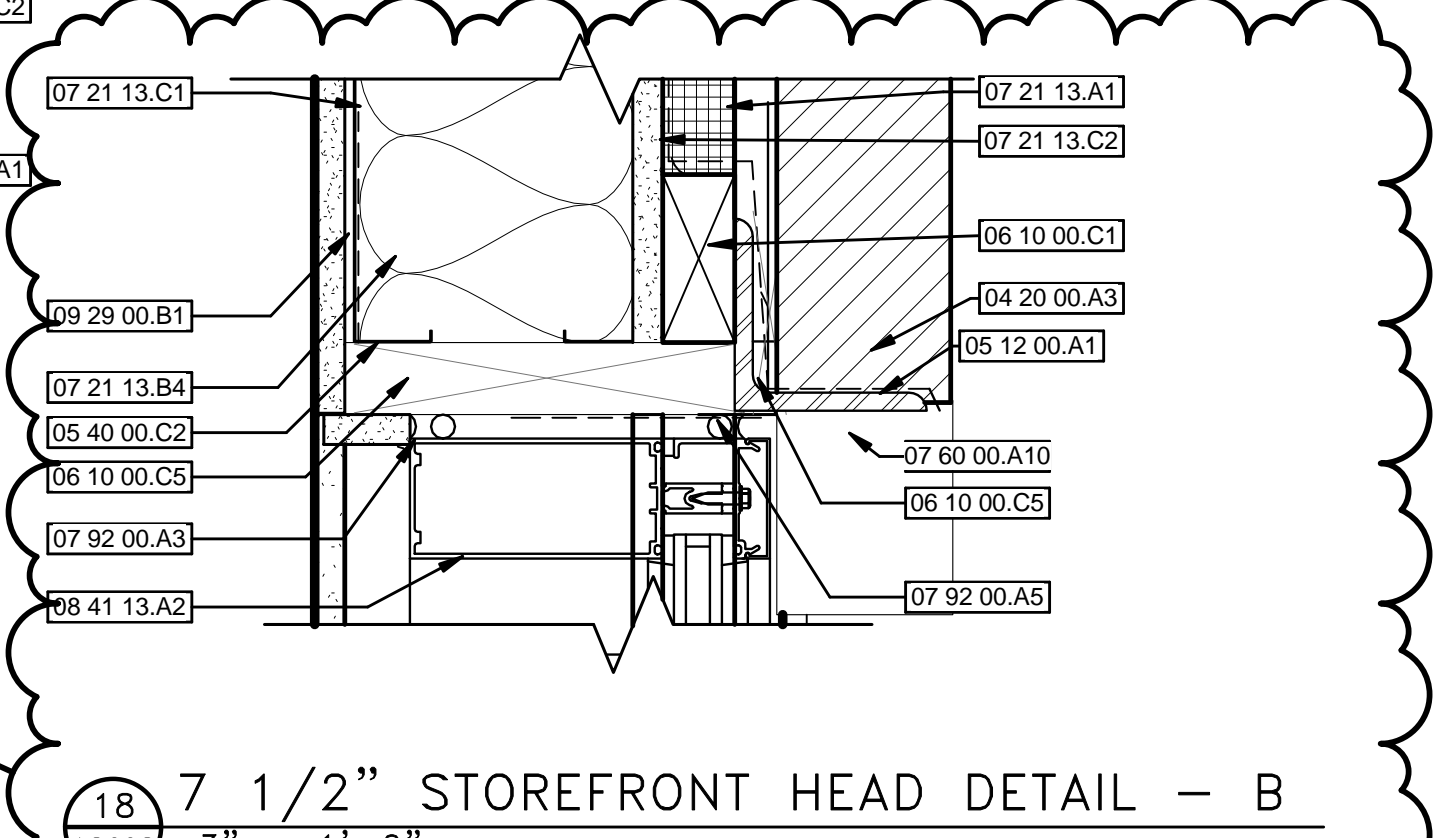
11 STOREFRONT SILL DETAIL - B  
3" = 1'-0"



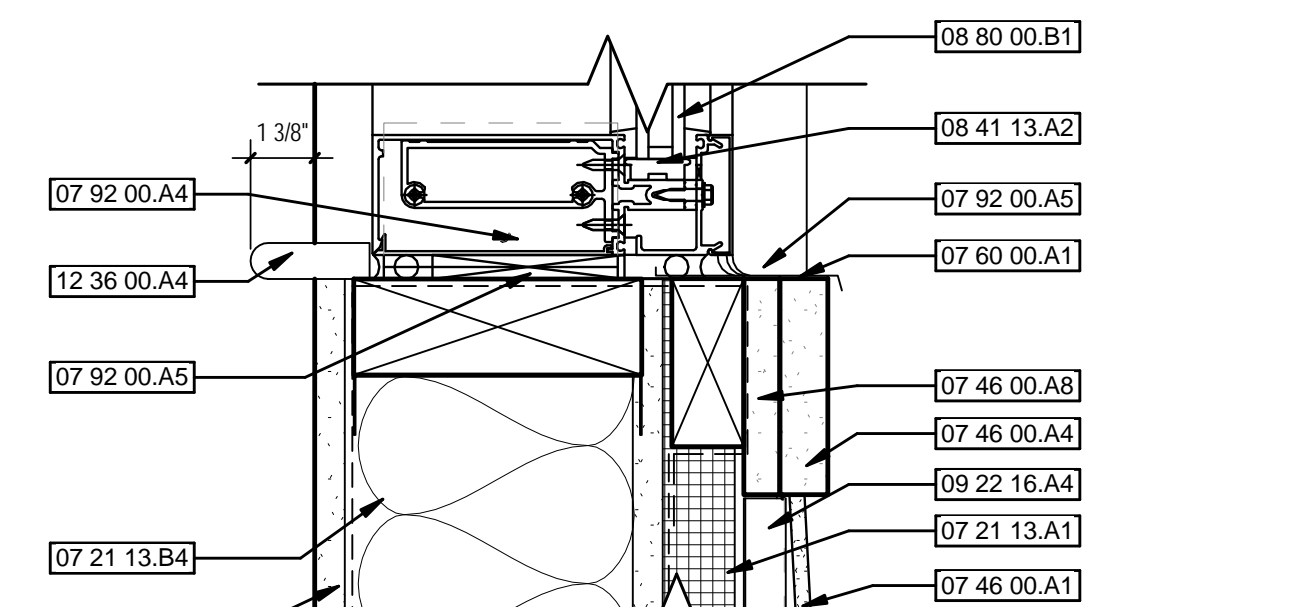
15 7 1/2" STOREFRONT SILL DETAIL - A  
3" = 1'-0"



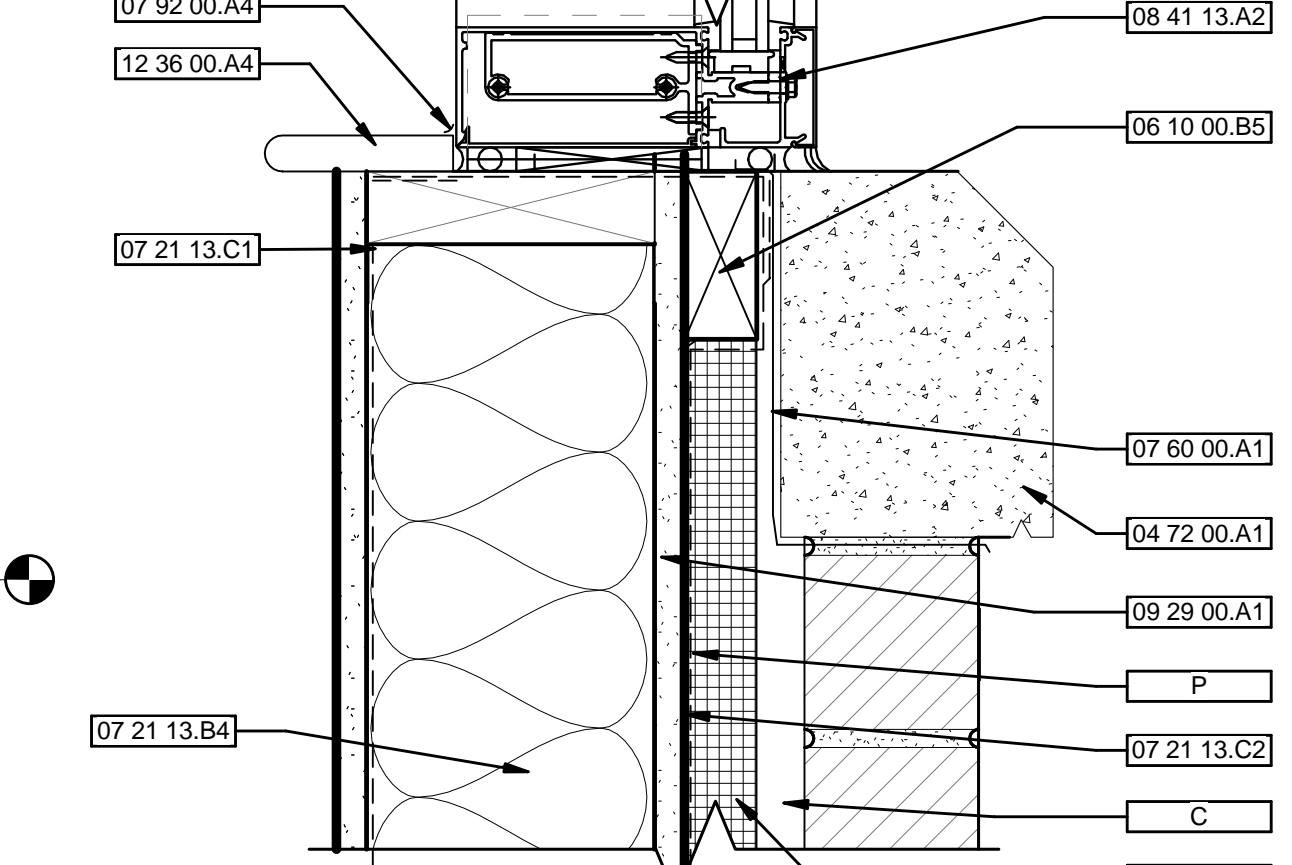
10 7 1/2" STOREFRONT HEAD DETAIL - A  
3" = 1'-0"



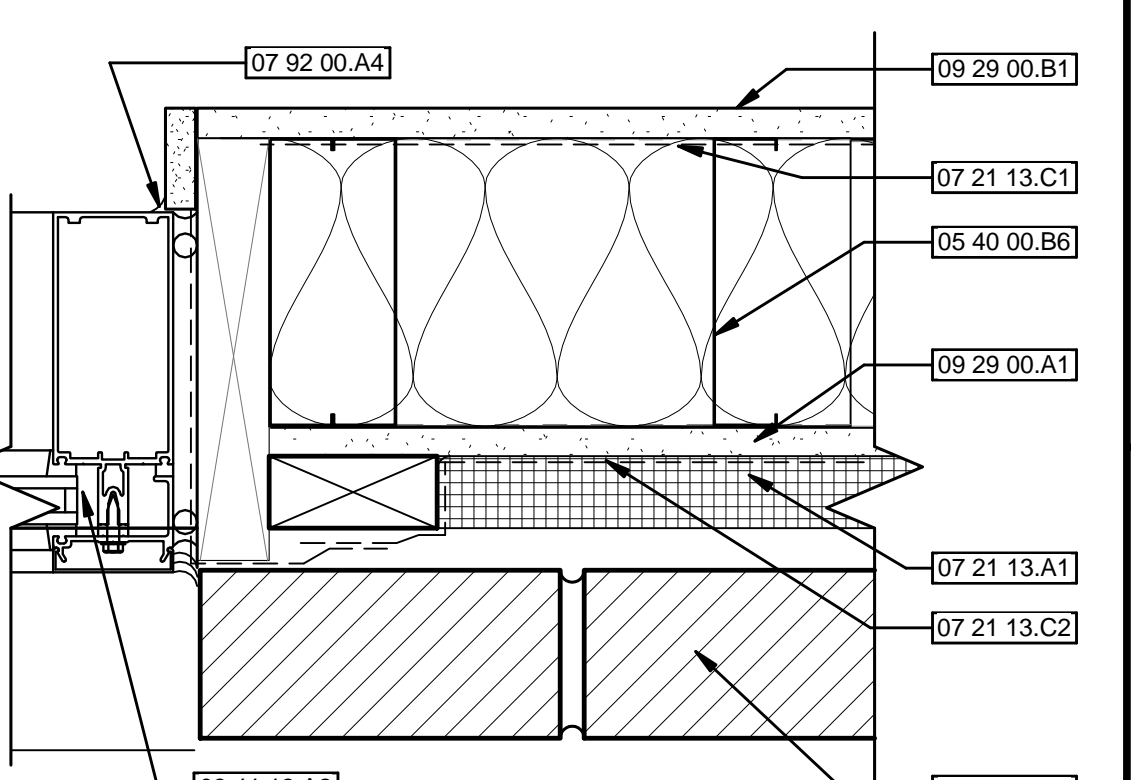
18 7 1/2" STOREFRONT HEAD DETAIL - B  
3" = 1'-0"



16 7 1/2" STOREFRONT SILL DETAIL - B  
3" = 1'-0"



17 7 1/2" STOREFRONT SILL DETAIL - C  
3" = 1'-0"



14 7 1/2" STOREFRONT JAM DETAIL - A  
3" = 1'-0"

0 2'-0" 4'-0" 8'-0"  
SCALE: 1/4" = 1'-0"

FINAL CONSTRUCTION DOCUMENTS  
FULLY SPRINKLERED

<b>CONSULTANTS:</b>		<b>ARCHITECT/ENGINEERS:</b>		<b>WINDOW &amp; LOUVER TYPES &amp; DETAILS</b>		<b>REPLACEMENT COMMUNITY LIVING CENTER</b>		<b>Office of Construction and Facilities Management</b>	
BURDETTE KOEHLER MURPHY & ASSOCIATES, INC. MECHANICAL / ELECTRICAL CONSULTING ENGINEERING 1416 CLARKVIEW ROAD, SUITE 500 BALTIC, MARYLAND 21209 410.323.0600 - FAX 410.377.2543		KOFFEL ASSOCIATES, INC. FIRE PROTECTION ENGINEERING 8815 CENTRE PARK DR., SUITE 200 COLUMBIA, MARYLAND 21045 410.750.0246 - FAX 410.750.2588		POLY DESIGN GROUP ARCHITECTURE PLANNING ENGINEERING 2215 Conowingo Rd, Suite 101 Bel Air, Maryland 21015-1436 www.poly-design.com		Project Title REPLACEMENT COMMUNITY LIVING CENTER		Project Number 512-173 Building Number 370	
CENTURY ENGINEERING, INC. CIVIL & STRUCTURAL ENGINEERING 1070 GLENN ROAD HARTFORD, CONNECTICUT 06105 860.288.2400 - FAX 860.288.2401		BUILDING COST CONSULTANTS COST ESTIMATING 12917 - 30TH AVENUE PLATTSBOROUGH, NEW JERSEY 08648 402.298.8260 - FAX 402.298.8290		JOHN MILNER ASSOCIATES, INC. CULTURAL RESOURCES CONSULTANT 325 NORTH CHURCH STREET WEST CHESTER, PENNSYLVANIA 19380 610.434.9000 - FAX 610.434.9408		Location PERRY POINT VA MEDICAL CENTER		Drawing Number AS608	
1 BID RF IS REVISION		10-04-18		Approved: Project Director		Date 06/08/18		Checked CAJ	
Revisions:		Date		Drawn JKI/CE/BJP/WPI/DW/DK		Department of Veterans Affairs			