

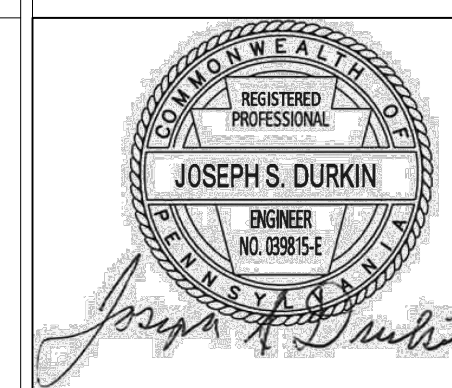
3 WASTEWATER TREATMENT PLANT
CW-103 SCALE: 1"=10'

- KEYED NOTES:

- 1 REMOVE 8' FENCE, POSTS, POST FOUNDATIONS, AND GATES.
- 2 THE CONTRACTOR SHALL REMOVE ALL TREES AND BRUSH AND TRIM BACK ALL TREE BRANCHES LOCATED WITHIN FIVE (5) FEET OF THE PERIMETER SECURITY FENCE. ALL DISTURBED AREAS SHALL BE RESTORED.
- 3 AFTER CONSTRUCTION OF NEW UV SYSTEM REMOVE EXISTING UV SYSTEM, INCLUDING ABANDONED CHANNEL, Baffles, CONTROL, PANELS, ELECTRICAL POWER, SIGNAL CONNECTIONS WIRES AND CONDUIT, SEAL OPENINGS, CONCRETE TRENCH AND TRENCH GRATES TO REMAIN. REMOVE ALL OBSTRUCTIONS AND GROUT CHANNEL AS NEEDED TO PROVIDE SMOOTH FLOW CHANNEL.
- 4 THE CONTRACTOR SHALL LOCATE ALL UNDERGROUND UTILITIES PRIOR TO BEGINNING ANY EXCAVATION WORK. ANY DIGGING WHICH MUST BE DONE WITHIN THREE (3) FEET OF A UTILITY SHOWN ON THE DRAWINGS OR MARKED IN THE FIELD SHALL BE DUG BY HAND.
- 5 CONTRACTOR TO REMOVE ALL ABANDONED PIPING IN AREA OF NEW WORK. PLUG WITH CONCRETE ANY ABANDONED PIPING TO REMAIN. PROTECT EX. PIPING TO REMAIN. TEMPORARILY PERMANENTLY RELOCATE EXISTING PIPING TO ACCOMMODATE NEW WORK.
- 6 PROVIDE NEW 16'-0" GATE. SEE DETAIL 2/CW-103 GATE ELEVATION DETAIL.
- 7 PROVIDE NEW 10'-10" GATE. SEE DETAIL 2/CW-103 GATE ELEVATION DETAIL.
- 8 THE CONTRACTOR SHALL INSTALL THE TERMINATING POSTS OF THE NEW FENCE TIGHT TO THE WASTEWATER TREATMENT PLANT BUILDING TO ENSURE ENCLOSED AREA CANNOT BE PENETRATED.

[illegible]

CONSULTANTS:



ARCHITECT/ENGINEERS:



Drawing Title
WASTEWATER TREATMENT PLANT

Approved: Project Director
-
-
VA NUHCS PLANNING AND ENGINEERING

Project Title	MODERNIZE WASTEWATER TREATMENT PLANT
---------------	--

Location		
151 KNOLL CROFT ROAD, LYONS, NJ		
Date	Checked	Dra

CONSTRUCTION
DOCUMENTS

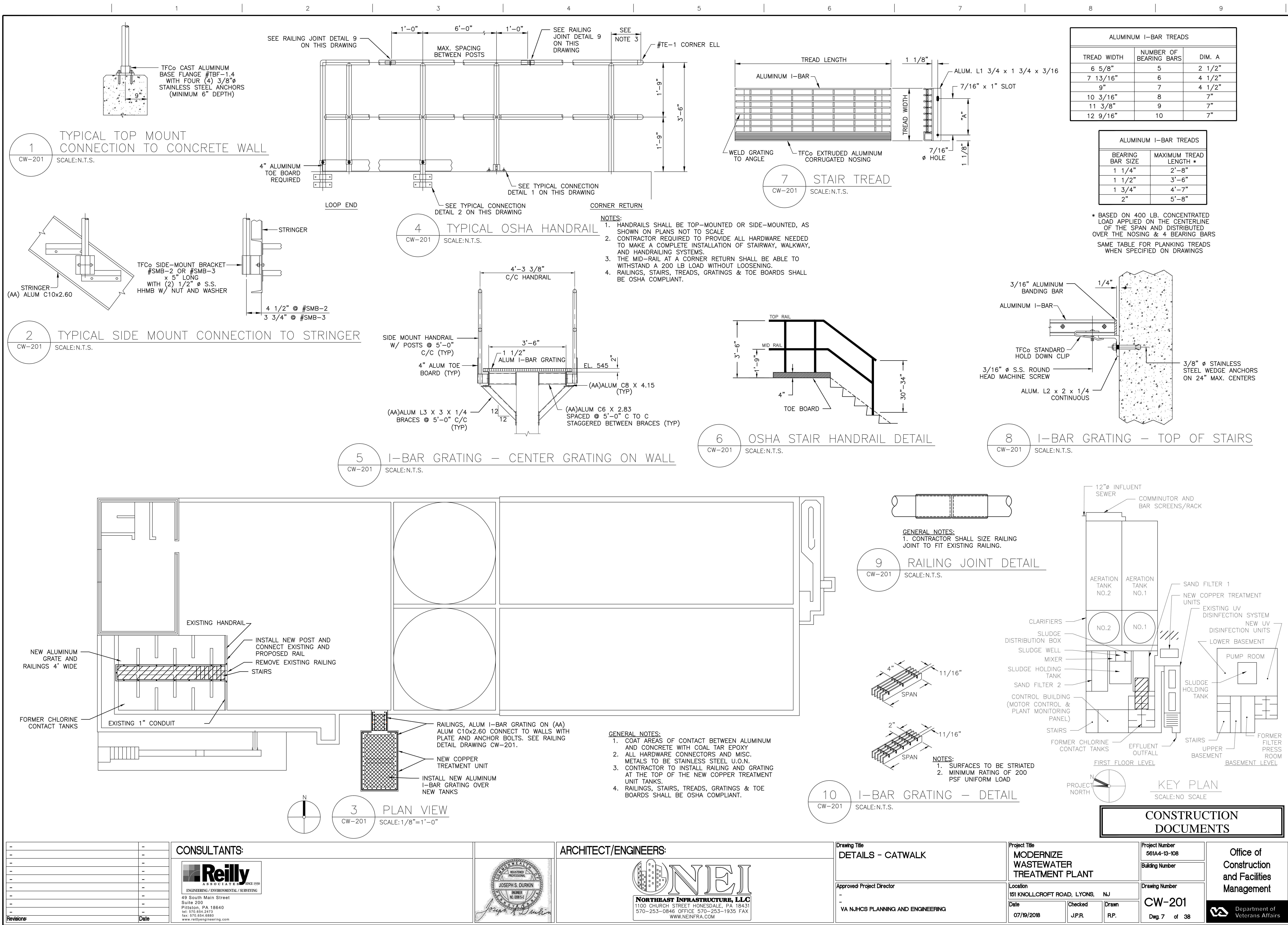
Project Number	561A4-13-108
Building Number	

Drawing Number
CW-103

Office of
Construction
and Facilities
Management



three inches = one foot
one and one half inches = one foot
one inch = one foot
three quarters inch = one foot
one half inch = one foot
three eighths inch = one foot
one quarter inch = one foot
one eighth inch = one foot



Reilly ASSOCIATES INC. ENGINEERING / ENVIRONMENTAL / SURVEYING
49 South Main Street
Suite 200
Pittston, PA 16840
tel: 570.654.2473
fax: 570.654.8860
www.reillyengineering.com

ARCHITECT/ENGINEERS:
ONEI
NORTHEAST INFRASTRUCTURE, LLC
1100 CHURCH STREET HONESDALE, PA 15431
570-253-0846 OFFICE 570-253-1935 FAX
WWW.NEINFRA.COM

Drawing Title
DETAILS - CATWALK

Approved Project Director
VA NUHCS PLANNING AND ENGINEERING

Project Title
MODERNIZE WASTEWATER TREATMENT PLANT

Location
151 KNOLL CROFT ROAD, LYONS, NJ

Date
07/19/2018

Checked
J.P.R.

Drawn
R.P.

Project Number
561A4-13-108

Building Number

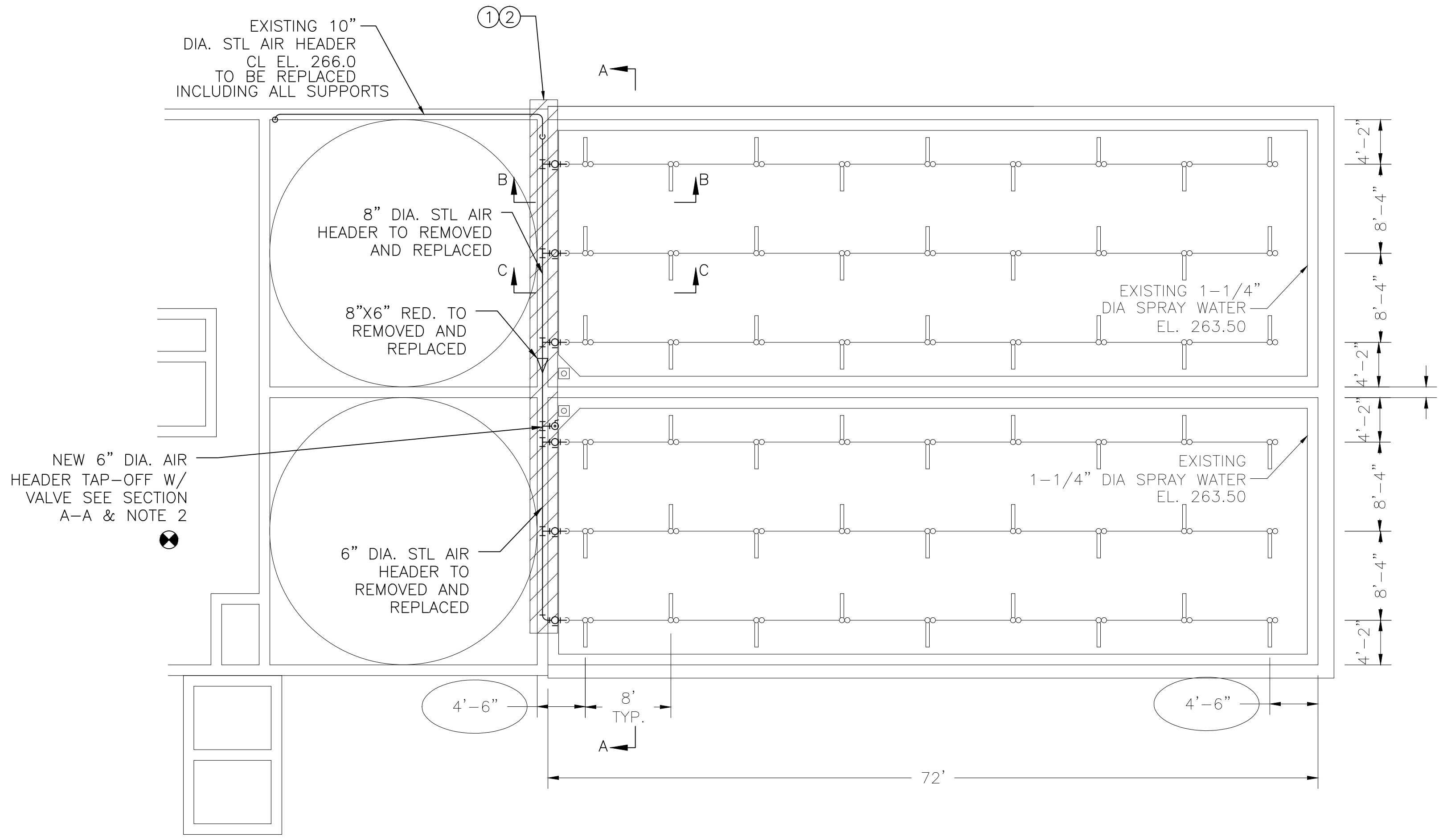
Drawing Number
CW-201

Dwg. 7 of 38

Office of Construction and Facilities Management
Department of Veterans Affairs

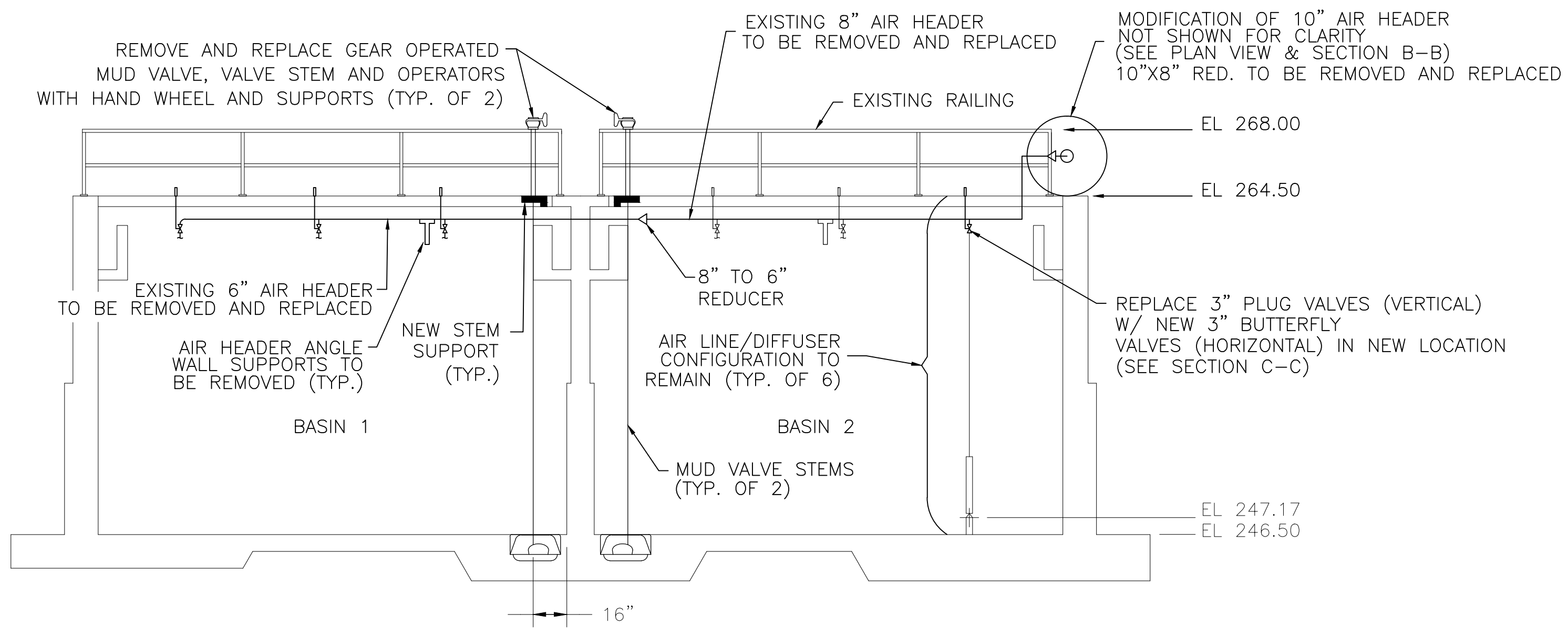
three inches = one foot
one and one half inches = one foot
one inch = one foot
three quarters inch = one foot
one half inch = one foot
three eighths inch = one foot
one quarter inch = one foot
one eighth inch = one foot
one sixteenth inch = one foot

A
B
C
D
E
F



1 AERATION BASINS DEMOLITION AND RENOVATION
CW-202 SCALE: 1/8"=1'-0"

- KEYED NOTES:
- 1 REMOVE EXISTING 6"/8" HEADER PIPE, VALVE AND SUPPORTS.
 - 2 INSTALL NEW 8"/6" AIR HEADER PIPING, 8"/6" REDUCER, 3" BUTTERFLY VALVES, PIPING, AND SUPPORTS.

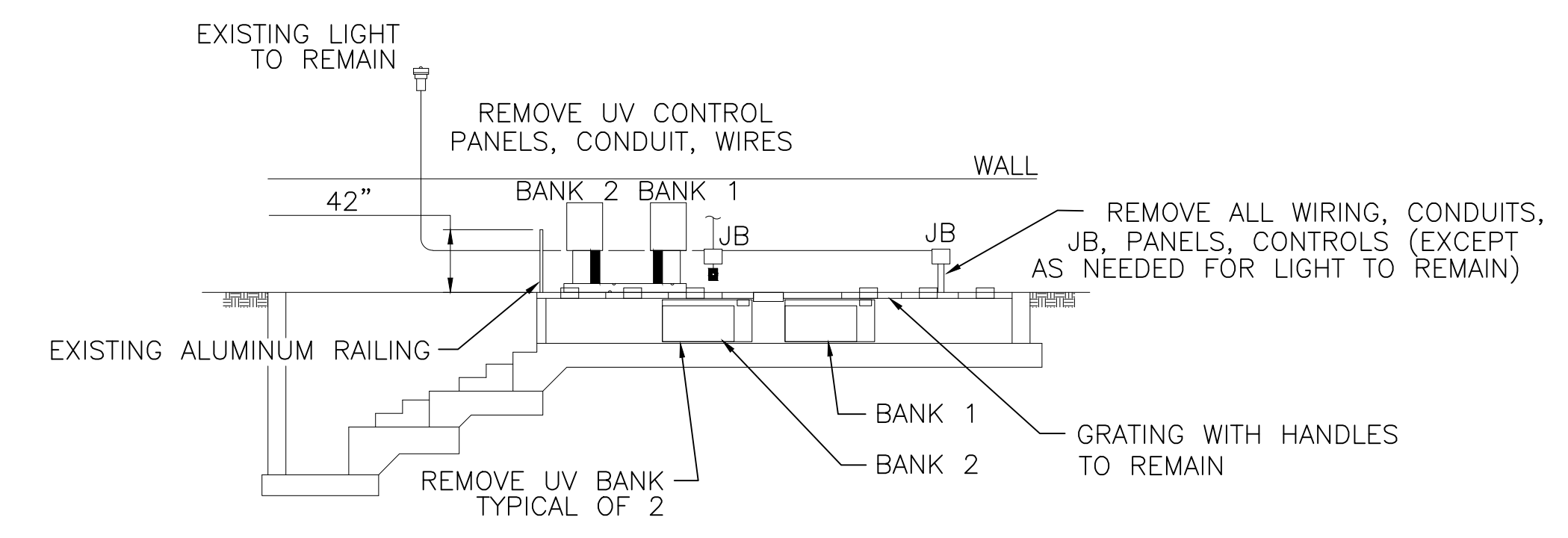


2 SECTION A-A: AERATION BASINS DEMOLITION AND RENOVATION
CW-202 SCALE: N.T.S.

- GENERAL NOTES:
- 1. CONDITIONS BELOW LIQUID LEVEL HAVE NOT BEEN VERIFIED.
 - 2. AN "ON-LINE" AERATION BASIN MAY NOT OPERATE W/OUT A DIFFUSED AIR SUPPLY FOR GREATER THAN 8 HOURS STRAIGHT.

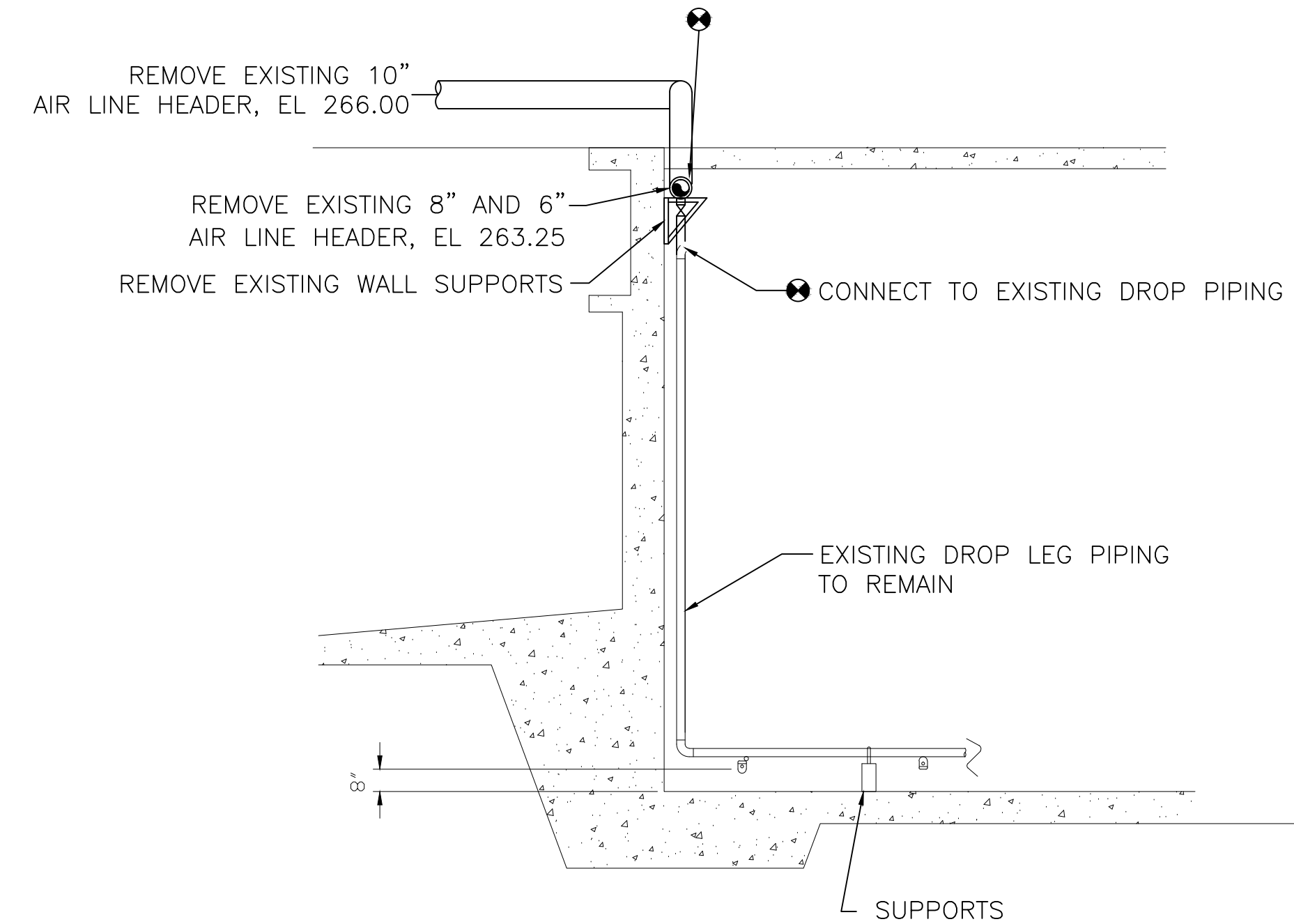
- CONSTRUCTION OPERATIONAL NOTES:
- 1. PROVIDE TAPS, PIPES, VALVES, AND ALL REQUIRED WORK TO PROVIDE TEMPORARY AIR TO ON-LINE BASIN DURING CONSTRUCTION

- NOTES:
- 1. REMOVE EXISTING 8" AND 6" AIR HEADER PIPING, VALVES AND SUPPORTS
 - 2. INSTALL NEW 8" AND 6" AIR HEADER PIPING, 8" AND 6" REDUCER, 3" BUTTERFLY VALVES, PIPING AND STAINLESS STEEL SUPPORTS.
 - 3. REMOVE AND REPLACE GEAR OPERATED MUD VALVE, VALVE STEM AND OPERATORS WITH HAND WHEEL AND SUPPORTS. (TYP. OF 2)

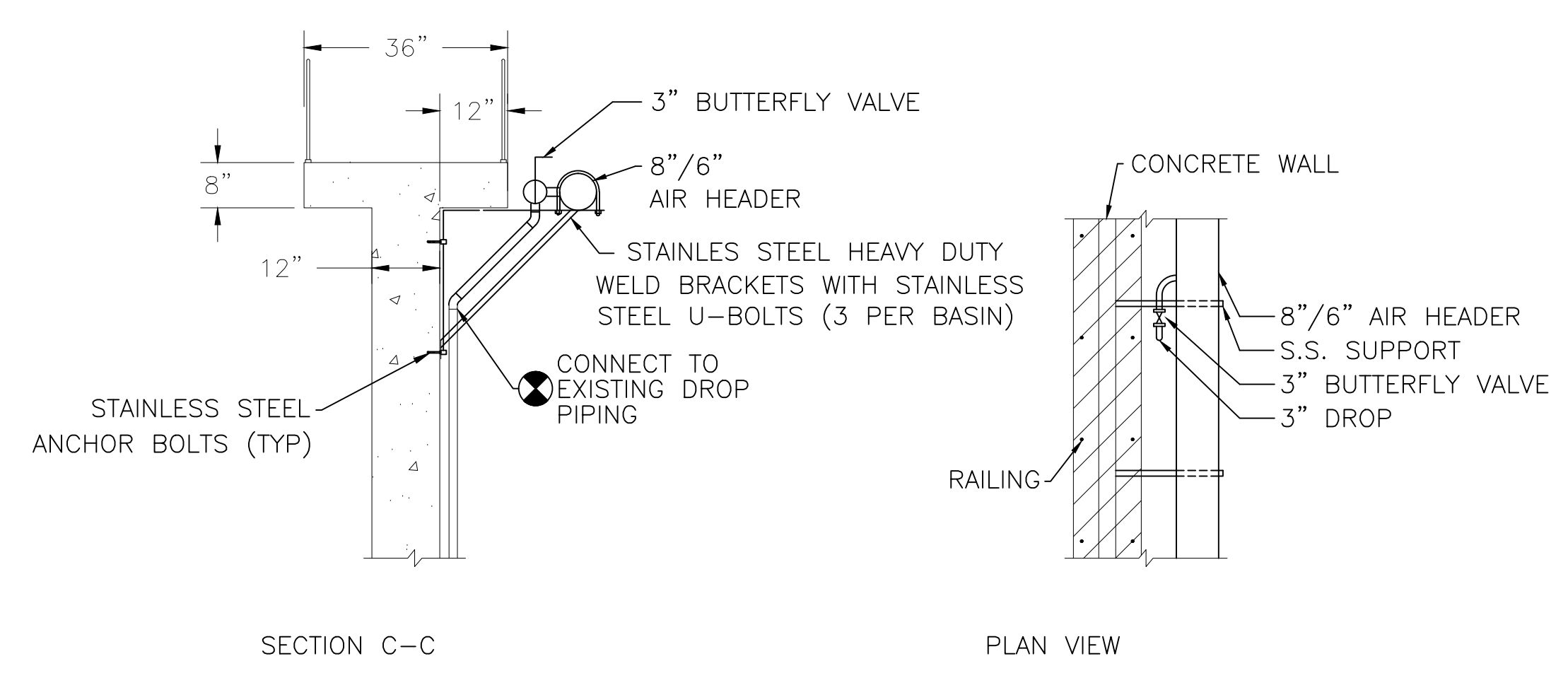


5 EXISTING UV DISINFECTION SYSTEM LAYOUT AND DEMOLITION PLAN
CW-202 SCALE: 1/8"=1'-0"

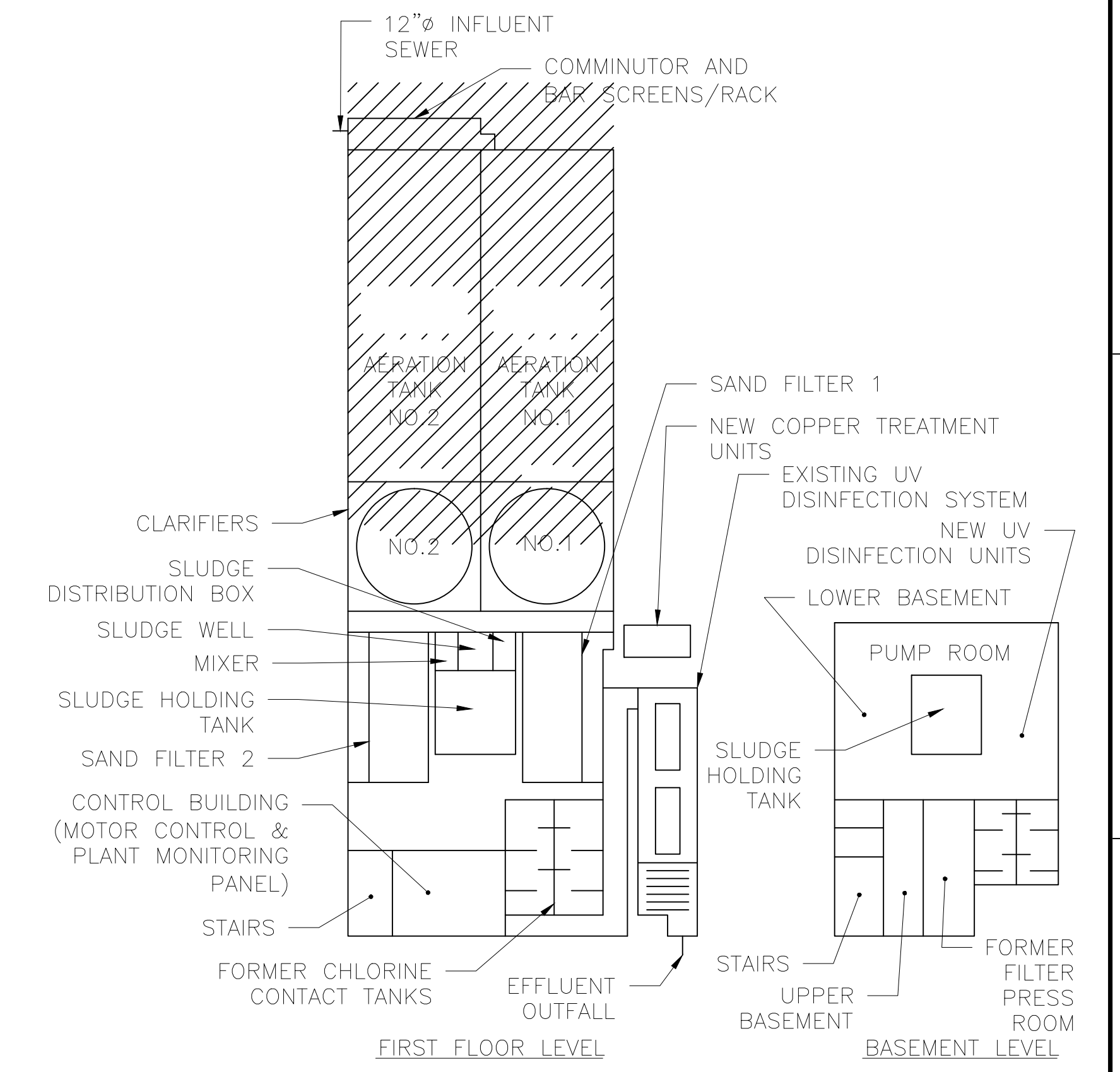
- NOTES:
- 1. SEAL ALL OPENINGS & PENETRATIONS AFTER DEMOLITION.
 - 2. REMOVE ALL OBSTRUCTION IN UV CHANNEL & GROUT AS NEEDED TO PROVIDE SMOOTH FLOW CHANNEL.



3 SECTION B-B: AIR DISTRIBUTION LINE DEMOLITION
CW-202 SCALE: N.T.S.



4 AIR LINE REPLACEMENT
CW-202 SCALE: N.T.S.



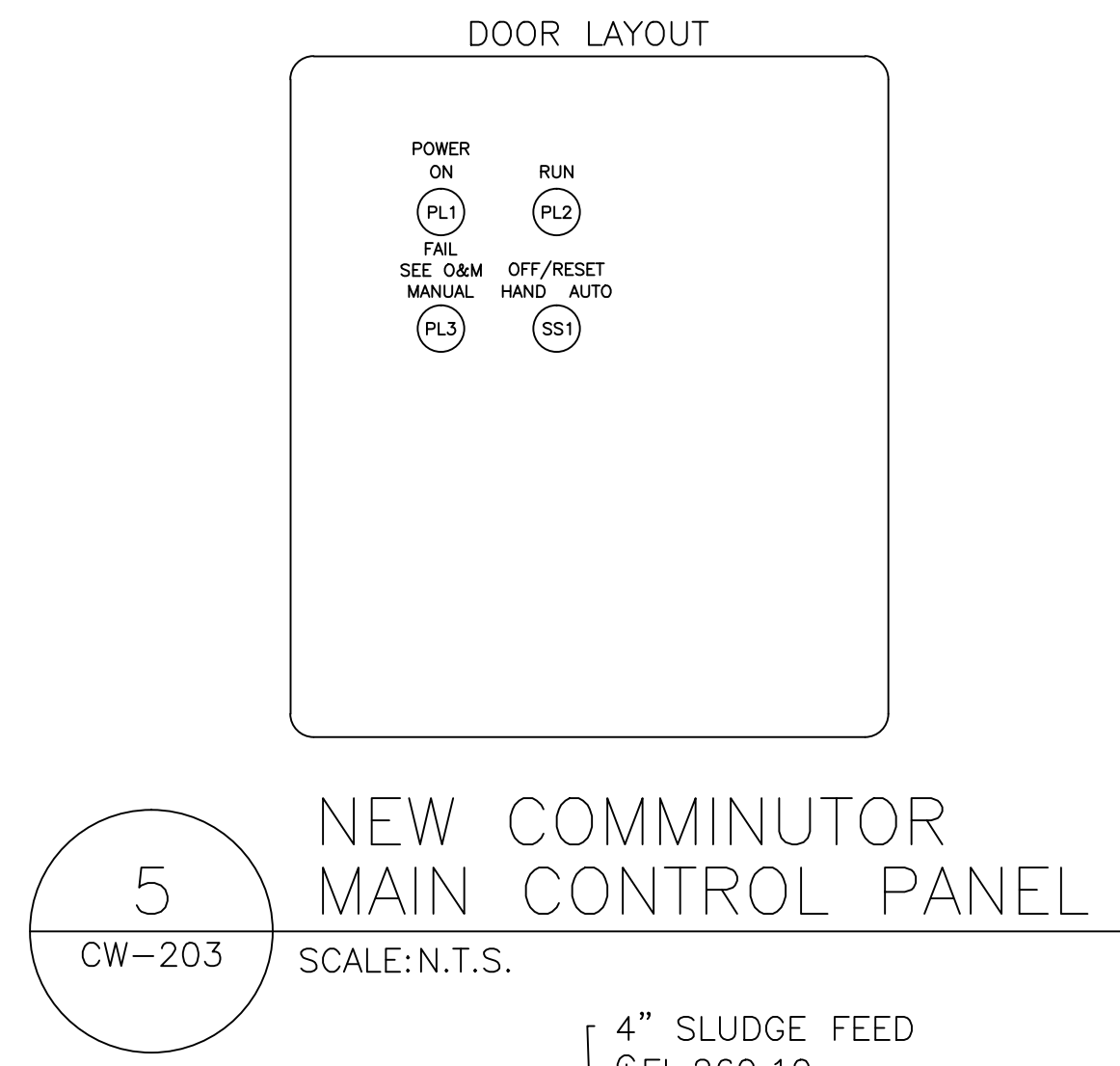
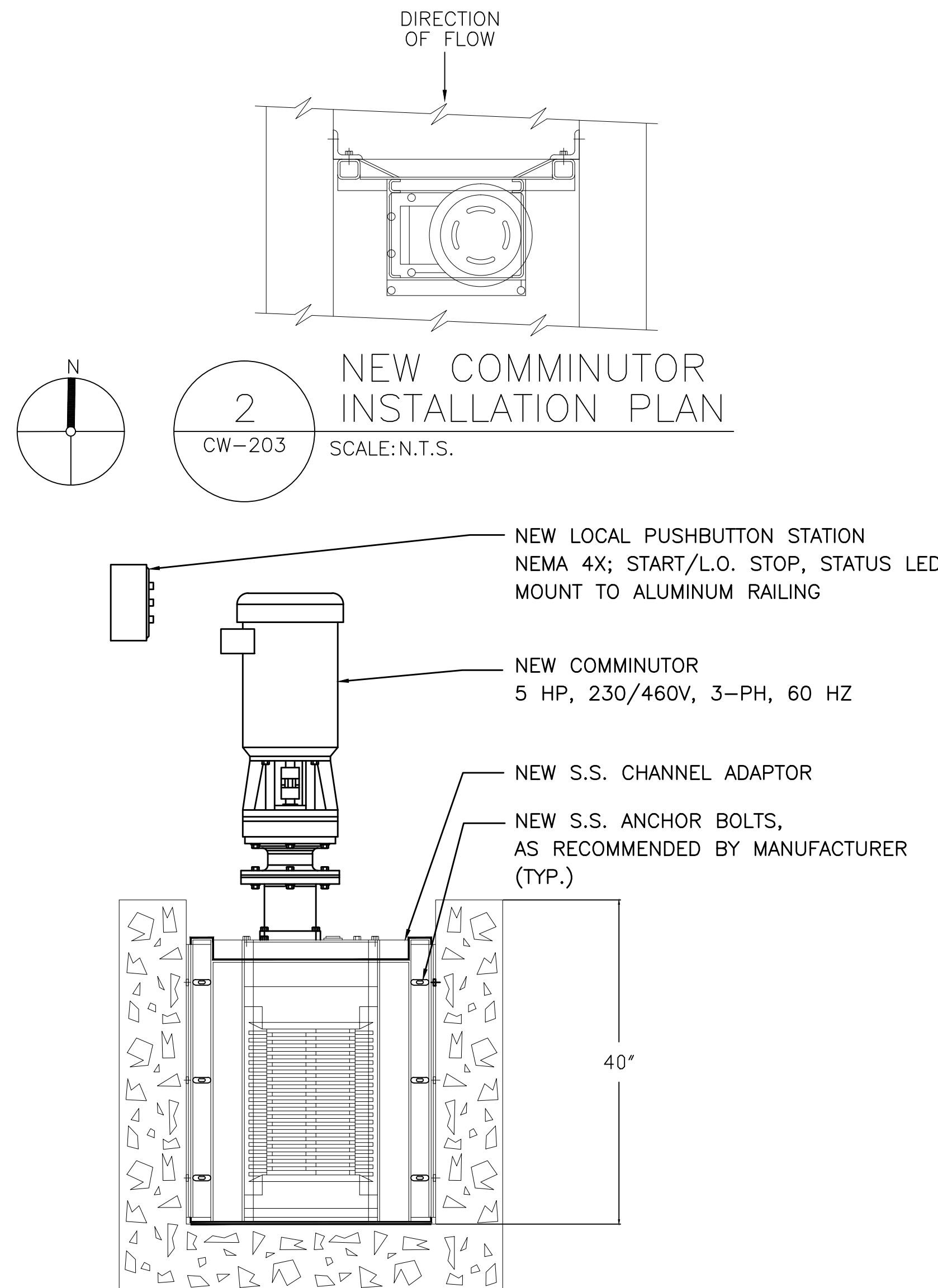
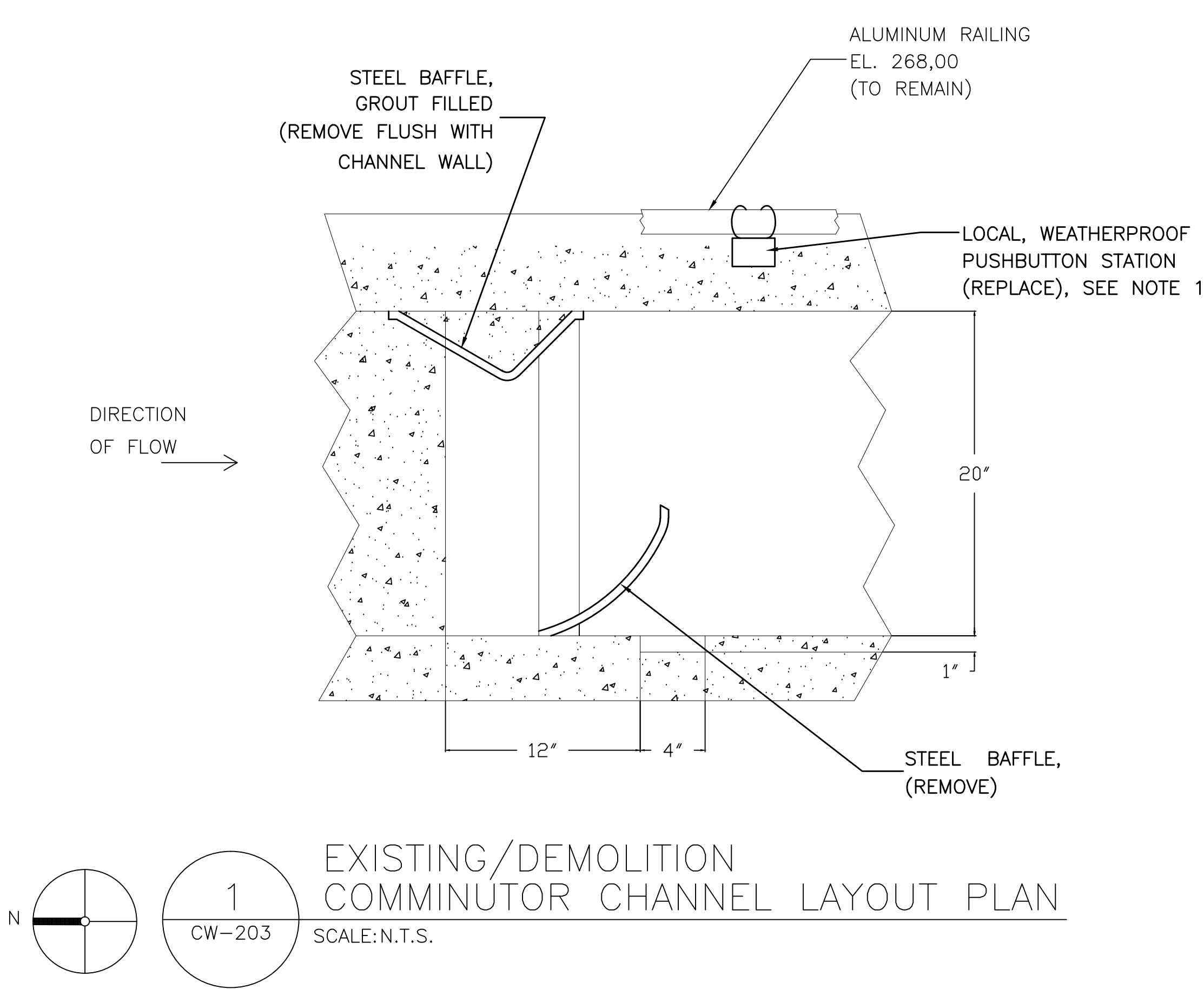
KEY PLAN
SCALE: NO SCALE

NOTE: BASE DRAWING FROM MODERNIZATION OF DOMESTIC WASTEWATER TREATMENT PLANT 2002.

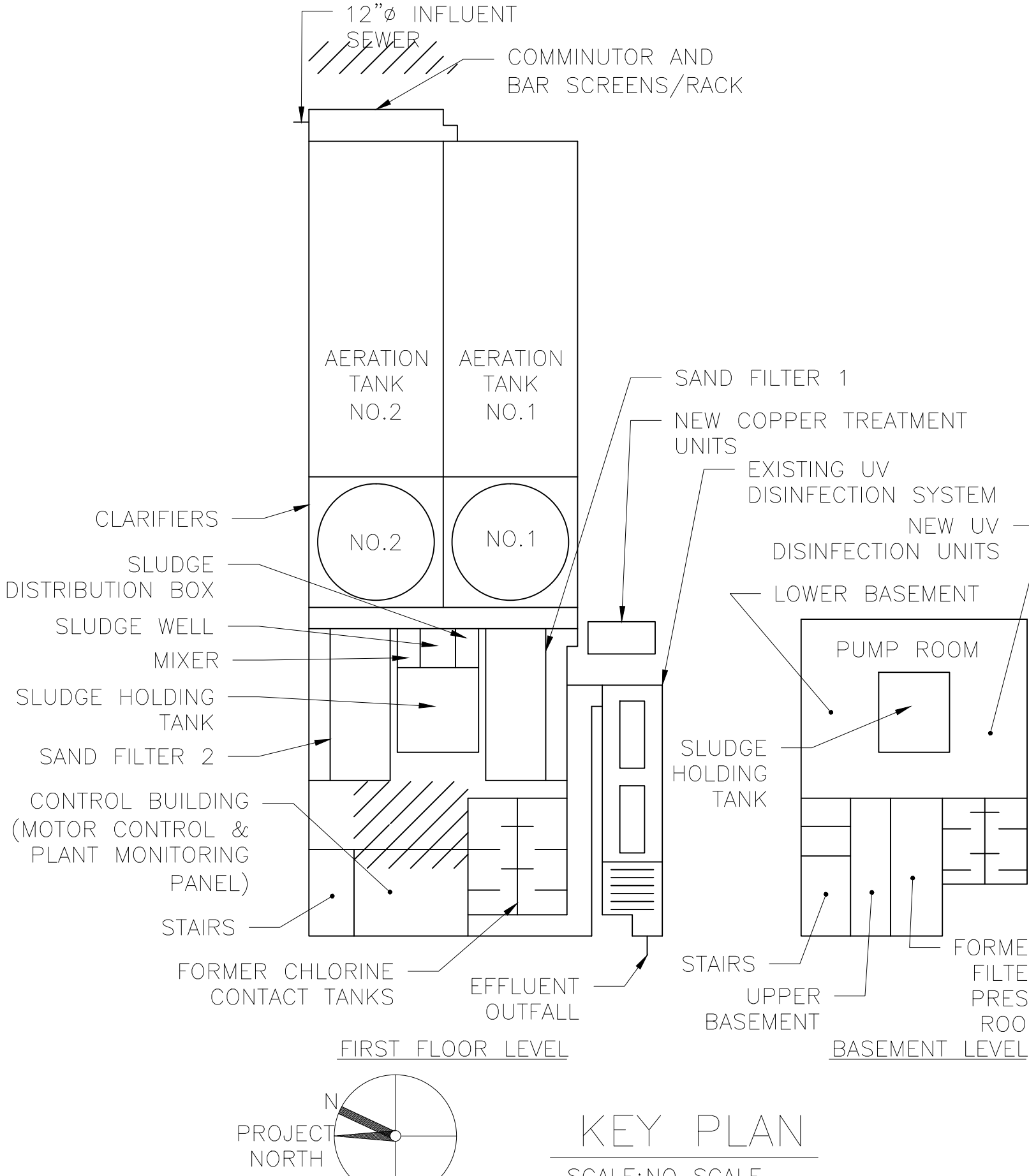
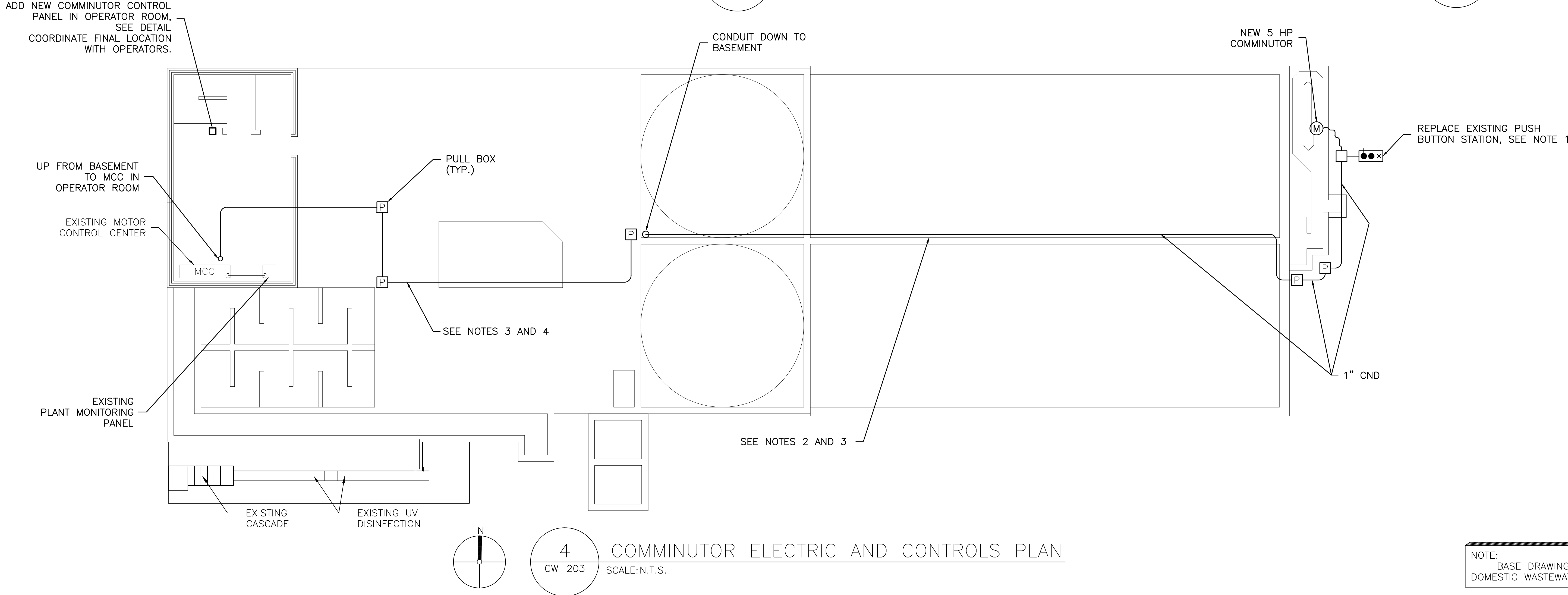
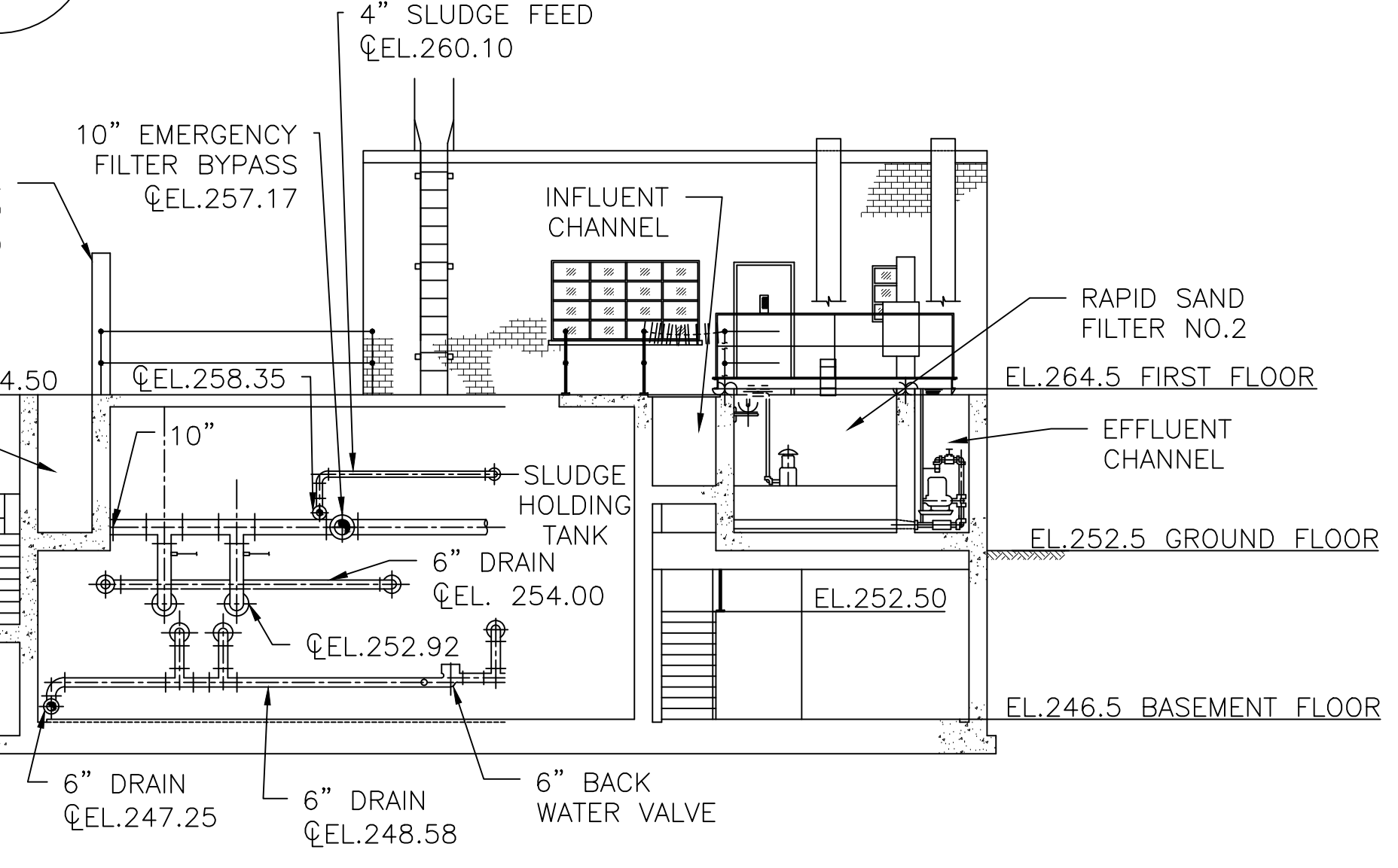
CONSTRUCTION DOCUMENTS

<div>Reilly ASSOCIATES ENGINEERING / ENVIRONMENTAL / SURVEYING 49 South Main Street Suite 200 Pittston, PA 18640 tel: 570.654.2473 fax: 570.654.6880 www.reillyengineering.com</div>	<div>CONSULTANTS:</div>	<div>ARCHITECT/ENGINEERS: ONEI NORTHEAST INFRASTRUCTURE, LLC 1100 CHURCH STREET HONESDALE, PA 18431 570-253-0846 OFFICE 570-253-1935 FAX WWW.NEINFRA.COM</div>	Drawing Title DETAILS - AERATION BASIN		Project Title MODERNIZE WASTEWATER TREATMENT PLANT		Project Number 561A4-13-108		<div>Office of Construction and Facilities Management Department of Veterans Affairs</div>
			Approved Project Director VA NJHCS PLANNING AND ENGINEERING		Location 151 KNOLL CROFT ROAD, LYONS, NJ		Building Number 141		
			Date 07/19/2018		Checked J.P.R.		Draw R.P.		
			Dwg 8 of 38						

three inches = one foot
one and one half inches = one foot
one inch = one foot
one half inch = one foot
three quarters inch = one foot
one half inch = one foot
three eighths inch = one foot
one quarter inch = one foot
one eighth inch = one foot
one eighth inch = one foot

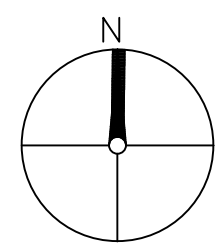
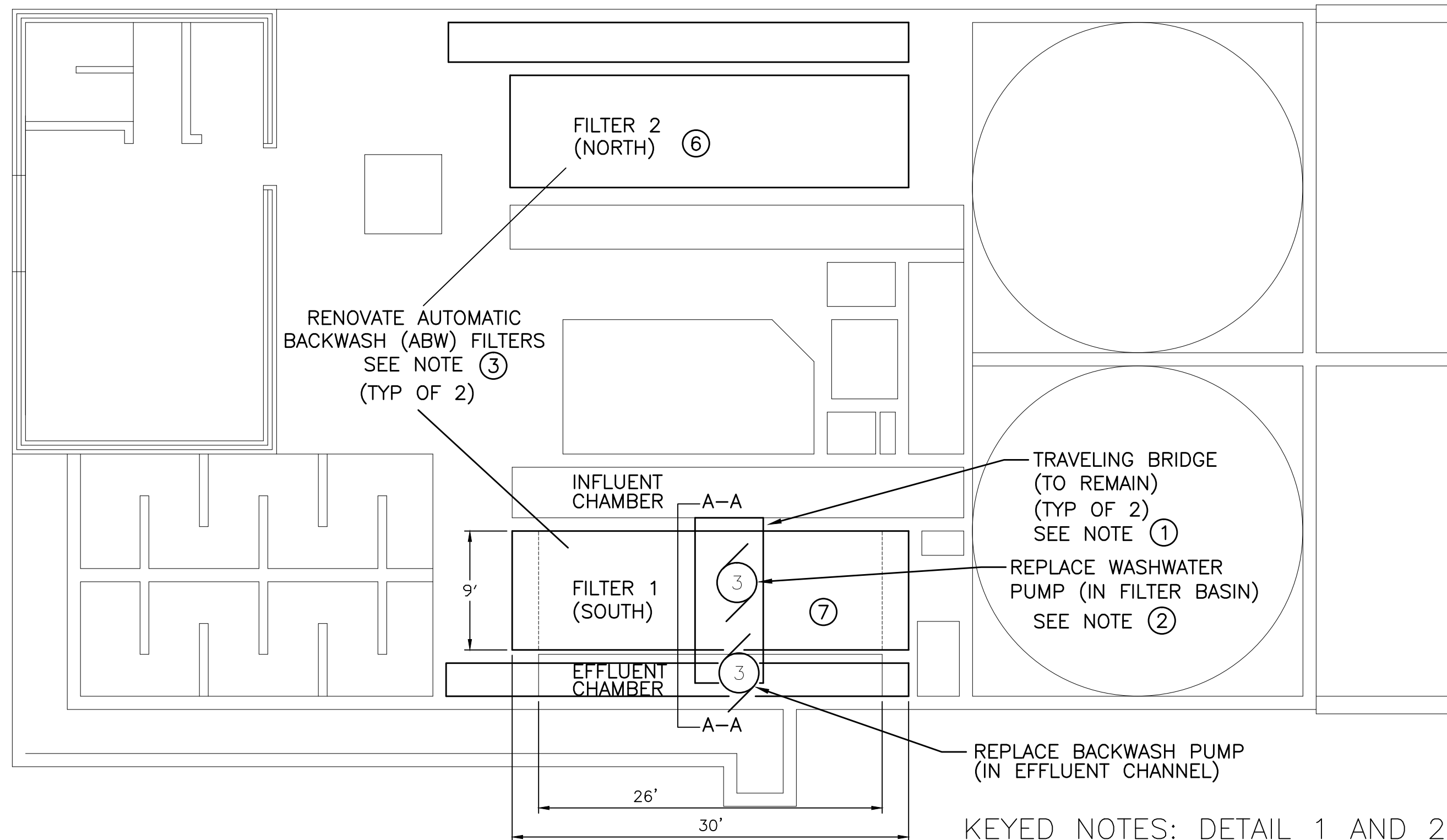


- CONSTRUCTION NOTES:**
1. REPLACE WITH NEW PUSHBUTTON STATION HAVING START, LEVEL LOW (L.O.) STOP WITH STATUS LIGHT; NEMA 4X HOUSING; AND MOUNT TO EXISTING ALUMINUM RAILING (TOP RAIL).
 2. CONDUITS RUN IN CONDUIT-CHASE BETWEEN AERATION AND CLARIFIER BASINS.
 3. REPLACE WITH NEW CONDUIT, JUNCTION BOXES, AND WIRE. SEE ELECTRICAL DRAWINGS.
 4. CONDUIT RUN IN BASEMENT LEVEL.



CONSULTANTS: 49 South Main Street Suite 200 Pittston, PA 18640 tel: 570.654.2473 fax: 570.654.0880 www.reillyengineering.com		ARCHITECT/ENGINEERS: NORTHEAST INFRASTRUCTURE, LLC 1100 CHURCH STREET HONESDALE, PA 18431 570-253-0846 OFFICE 570-253-1935 FAX WWW.NEINFRA.COM		Drawing Title DETAILS - NEW COMMUNUTOR		Project Title MODERNIZE WASTEWATER TREATMENT PLANT		Project Number 561A4-13-108		Office of Construction and Facilities Management	
Revisions:		Date		Approved Project Director - VA NJHCS PLANNING AND ENGINEERING		Location 151 KNOLL CROFT ROAD, LYONS, NJ		Building Number		Department of Veterans Affairs	
Date		Date		Date 07/19/2018		Date 07/19/2018		Dwg 9 of 38		Dwg 9 of 38	
Checked J.S.D.		Drawn D.J.P.		Drawing Number CW-203		Project Number 561A4-13-108		Building Number		Office of Construction and Facilities Management	
Scale N.T.S.		Scale N.T.S.		Scale 1/8"=1'-0"		Scale NO SCALE		Scale NO SCALE		Scale NO SCALE	

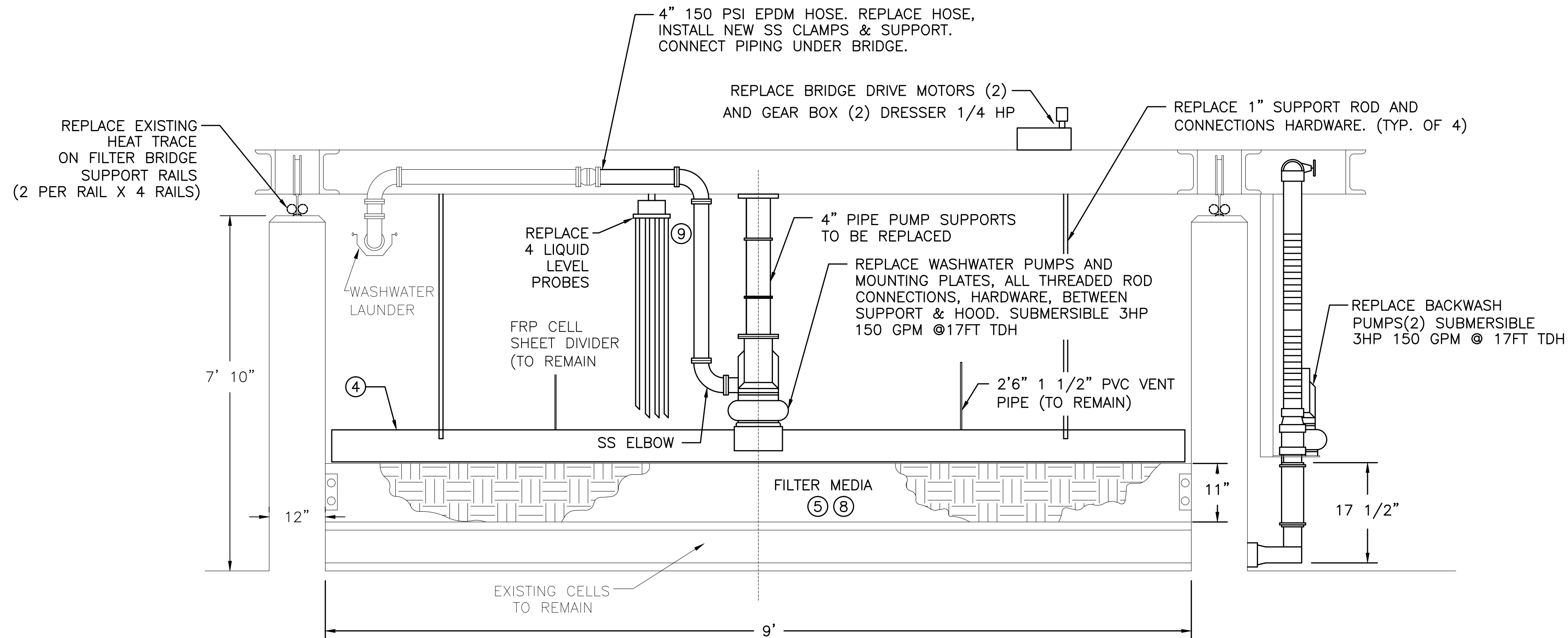
three inches = one foot
one and one half inches = one foot
one inch = one foot
three quarters inch = one foot
one half inch = one foot
one quarter inch = one foot
one eighth inch = one foot



1 FILTER RENOVATION PLAN VIEW
CW-204 SCALE: 1/4"=1'-0"

KEYED NOTES: DETAIL 1 AND 2

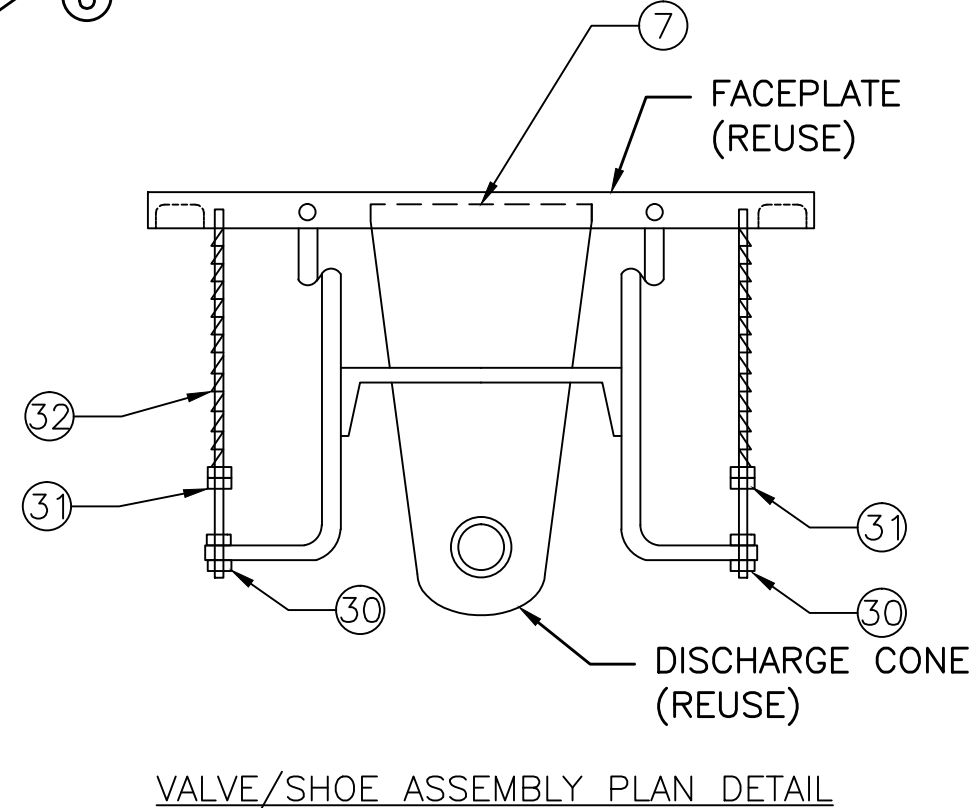
- 1 REPLACE ALL CONTROLS AND ALL ELECTRICAL CONNECTIONS FOR SAND FILTERS BACKWASH AND BRIDGE SYSTEMS. (TYP. OF 2)
- 2 REPLACE ALL SUPPORTS, PIPING, VALVES, AND HARDWARE ON BACKWASH SYSTEMS. ALL NEW MATERIAL SHALL BE STAINLESS STEEL. (TYP. OF 2)
- 3 REPLACE ALL SUPPORTS, PIPING, VALVES, AND HARDWARE ON WASH WATER PUMPS AND SYSTEMS. ALL NEW MATERIAL SHALL BE STAINLESS STEEL. (TYP. OF 2)
- 4 FIBERGLASS HOOD TO BE CLEANED PATCHED/REPAIRED AS NEEDED AND RECONNECTED. (TYP. OF 2)
- 5 REMOVE SAND MEDIA AND DISPOSE. (TYP. OF 2)
- 6 NORTH SAND FILTER - CLEAN FILTER CELLS, PATCH AND REPAIR CELLS AS NEED REMOVE DETERIORATED CAULK, INSTALL NEW CAULK AROUND CELLS.
- 7 SOUTH SAND FILTER - CLEAN FILTER, REMOVE DETERIORATED CAULK, INSTALL NEW CAULK.
- 8 INSTALL NEW SAND MEDIA: EFFECTIVE SIZE = 0.55 TO 0.65MM MAXIMUM UNIFORMITY COEFFICIENT = 1.50 (TYP. OF 2)
- 9 REPLACE 4 ADJUSTABLE LIQUID LEVEL PROBES AND MOUNTINGS. "NO WATER", "LOW WATER", "HIGH WATER", HIGH WATER OVER FLOW" (TYP. 2). ADJUST HEIGHT FOR PROPER OPERATION.



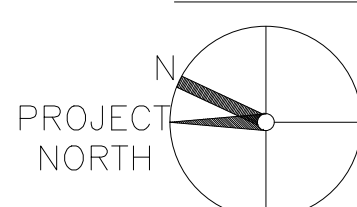
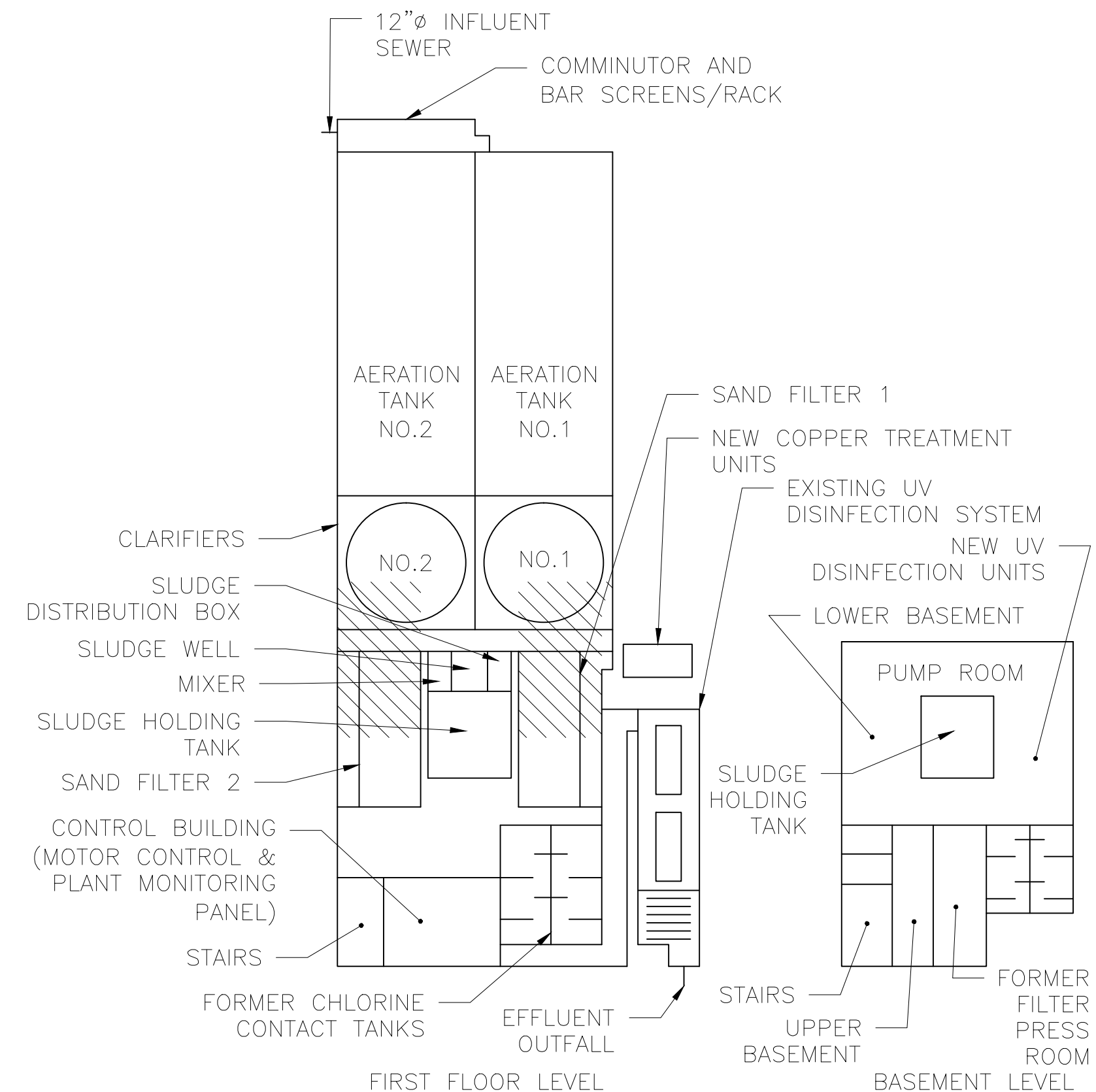
2 FILTER RENOVATION SECTION A-A (TYP. OF 2)
CW-204 SCALE: NOT TO SCALE

KEYED NOTES: DETAIL 3 ONLY

- 1 WASHER AND COTTER PIN
- 2 SPACER WASHERS
- 3 HINGE PIN
- 4 CROSS ARM
- 5 TENSION ADJUSTMENT SUPPORT
- 6 SUPPORT ARM (C8x13.75)
- 7 VALVE/SHOE ASSEMBLY (SEE NOTE 2)
- 8 THROTTLING 3" GATE VALVE (REUSE)
- 9 PUMP CONTROL PEDESTAL
- 10 NOT USED
- 11 NOT USED
- 12 HINGE PIN LOCATION
- 13 NOT USED
- 14 NOT USED
- 15 NOT USED
- 16 TENSION ADJUSTMENT SUPPORT ANGLES (REUSE)
- 17 THREADED ROD (REUSE)
- 18 RETAINING NUT (REUSE)
- 19 RETAINING NUT (REUSE)
- 20 ADJUSTMENT NUT (REUSE)
- 21 WASHER (REUSES)
- 22 SPRING (REUSE)
- 23 2-1/2" FLEXIBLE HOSE
- 24 3" FLEXIBLE HOSE
- 25 VALVE SUPPORT CHAIN
- 26 NOT USED
- 27 BACKWASH PUMP AND MOUNTING BASE
- 28 COUPLING FLANGE, 4"
- 29 PIPING ASSEMBLY HOSE
- 30 LOCKING NUT (REUSE)
- 31 ADJUSTMENT NUTS (REUSE)
- 32 TENSION SPRINGS (REUSE)



VALVE/SHOE ASSEMBLY PLAN DETAIL



KEY PLAN
SCALE: NO SCALE

ELEVATION A

DETAIL 3 NOTES:

1. ALL METAL COMPONENTS REPLACED TO BE TYPE 304 STAINLESS STEEL.
2. VALVE/SHOE ASSEMBLY - REUSE EXISTING FIBERGLASS SHOE, CONE, SPRINGS, REPLACE SUPPORTING METAL AND HARDWARE.

ELEVATION B

3 BACKWASH SUPPLY ELEVATIONS AND ENLARGED PLAN
CW-204 SCALE: NOT TO SCALE

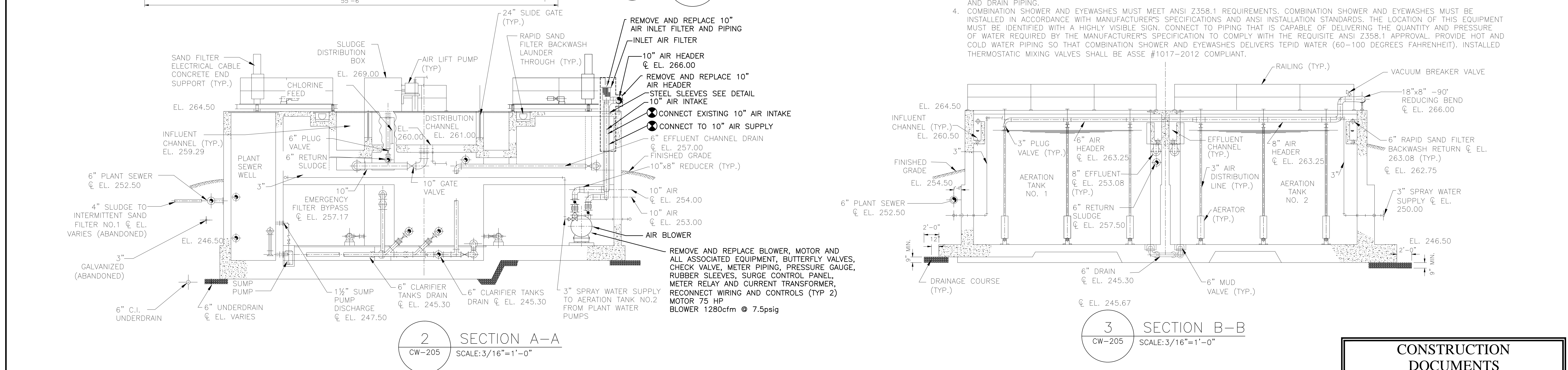
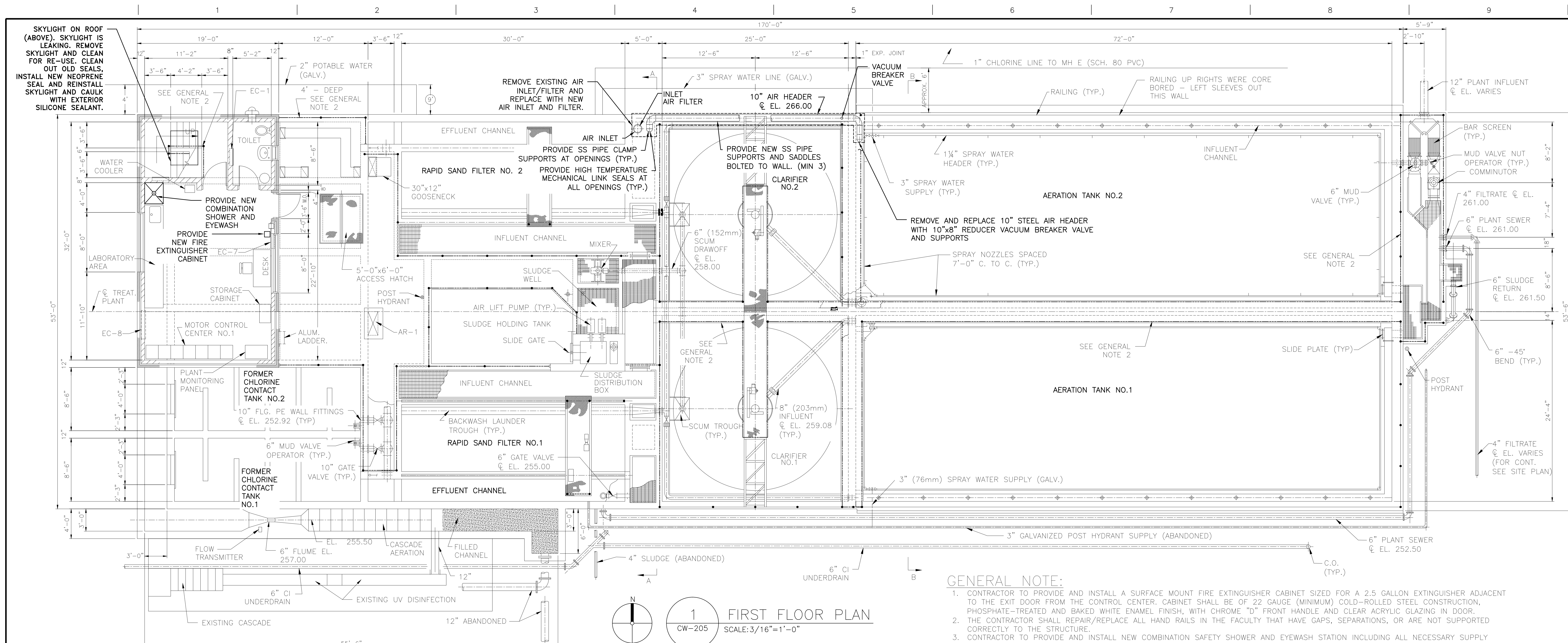
GENERAL NOTES:




1. CONDITIONS BELOW LIQUID LEVEL HAVE NOT BEEN VERIFIED.
2. FILTER RENOVATION SHALL BE COORDINATED WITH ULTRAVIOLET DISINFECTION SYSTEM RENOVATION. FILTERS SHALL NOT BE OFF-LINE CONCURRENTLY WITH UV SYSTEM (AND VICE VERSA).
3. WORK FOR THE BACKWASH FILTERS SHALL INCLUDE THE REPLACEMENT OF ALL CONNECTIONS FITTINGS, CLAMPS, MOUNTS, HARDWARE, CABLES, SUPPORTS, BRACKETS, PIPES, HOSES, AND SIMILAR EQUIPMENT FOR A FULLY FUNCTIONAL SYSTEM, ALL METALS SHALL BE STAINLESS STEEL.

NOTE:
BASE DRAWING FROM MODERNIZATION OF DOMESTIC WASTEWATER TREATMENT PLANT 2002.

CONSTRUCTION DOCUMENTS

CONSULTANTS: 49 South Main Street Suite 200 Pittston, PA 18640 tel: 570.654.2473 fax: 570.654.0880 www.reillyengineering.com		ARCHITECT/ENGINEERS: NORTHEAST INFRASTRUCTURE, LLC 1100 CHURCH STREET HONESDALE, PA 18431 570-253-0846 OFFICE 570-253-1935 FAX WWW.NEINFRA.COM		Drawing Title DETAILS - SAND FILTER Approved Project Director - VA NUHCS PLANNING AND ENGINEERING		Project Title MODERNIZE WASTEWATER TREATMENT PLANT Location 151 KNOLL CROFT ROAD, LYONS, NJ Date 07/19/2018 Checked J.S.D. Drawn D.J.P.		Project Number 561A4-13-108 Building Number Drawing Number CW-204 Dwg. 10 of 38		Office of Construction and Facilities Management 	
Revisions:											



CONSULTANTS:  49 South Main Street Suite 200 Pittston, PA 18640 tel: 970.654.2473 fax: 970.654.0880 www.reillyengineering.com		ARCHITECT/ENGINEERS:  NORTHEAST INFRASTRUCTURE, LLC 1100 CHURCH STREET HONESDALE, PA 18431 570-253-0846 OFFICE 570-253-1935 FAX WWW.NEINFRA.COM		Drawing Title DETAILS - OPERATING FLOOR PLAN AND SECTION Approved Project Director - VA NJHCS PLANNING AND ENGINEERING		Project Title MODERNIZE WASTEWATER TREATMENT PLANT Location 151 KNOLLCROFT ROAD, LYONS, NJ Date 07/19/2018 Checked J.S.D. Drawn D.J.P.		Project Number 561A4-13-108 Building Number - Drawing Number CW-205 Dwg. 11 of 38		Office of Construction and Facilities Management 	
--	--	---	--	--	--	---	--	---	--	--	--