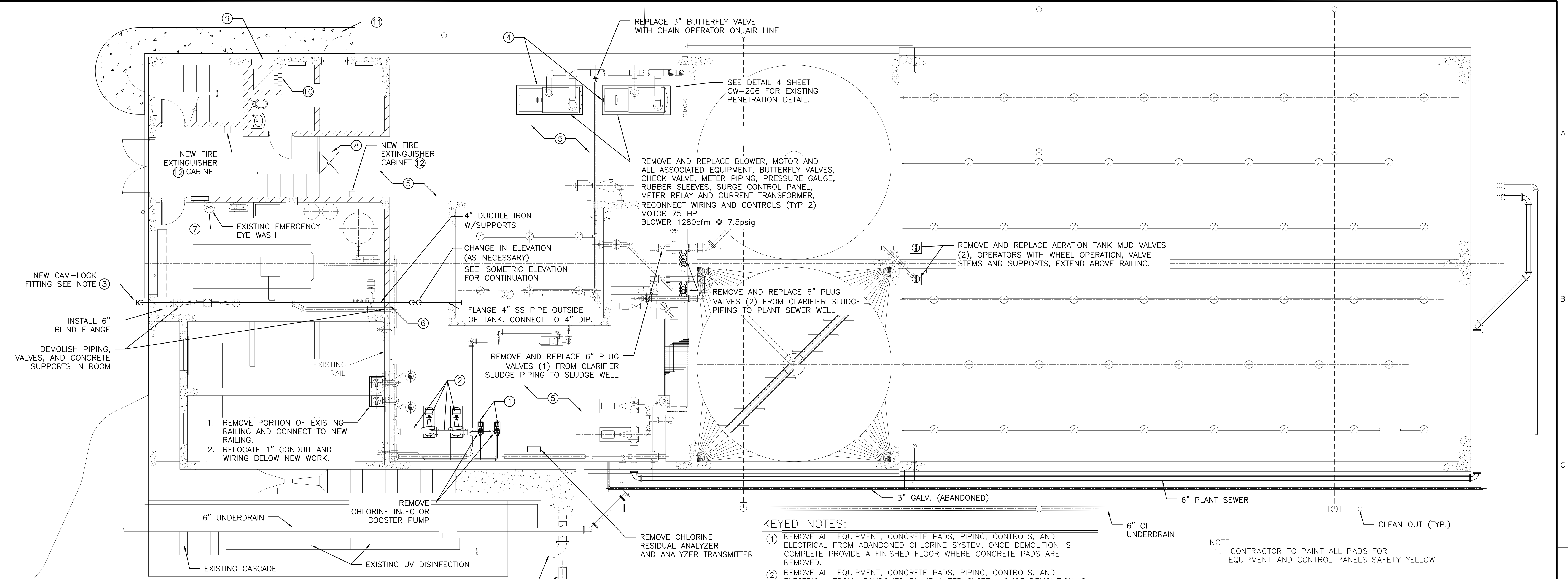


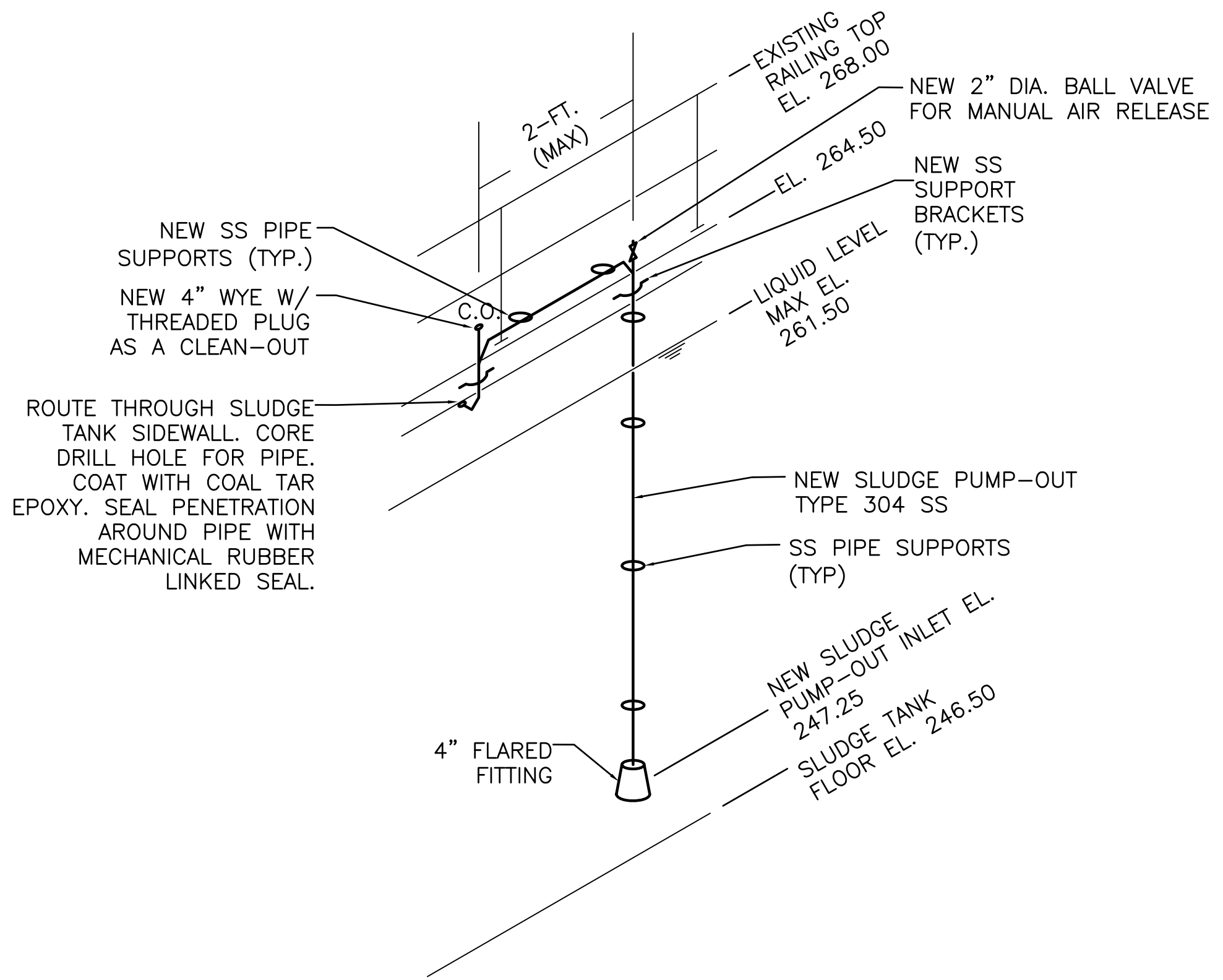
three inches = one foot  
one and one half inches = one foot  
one inch = one foot  
three quarters inch = one foot  
one half inch = one foot  
three eighths inch = one foot  
one quarter inch = one foot  
one eighth inch = one foot  
one sixteenth inch = one foot



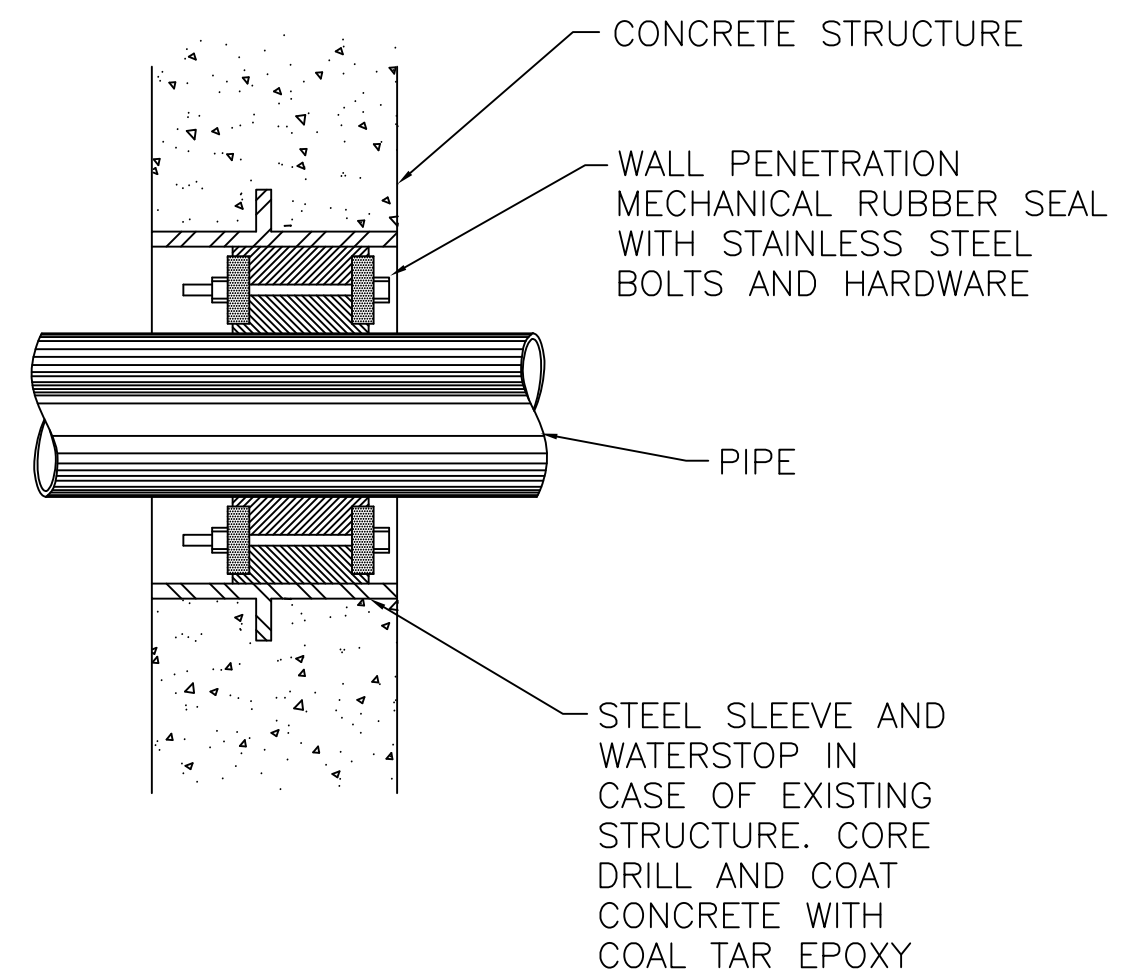
KEYED NOTES:

1. REMOVE ALL EQUIPMENT, CONCRETE PADS, PIPING, CONTROLS, AND ELECTRICAL FROM ABANDONED CHLORINE SYSTEM. ONCE DEMOLITION IS COMPLETE PROVIDE A FINISHED FLOOR WHERE CONCRETE PADS ARE REMOVED.
2. REMOVE ALL EQUIPMENT, CONCRETE PADS, PIPING, CONTROLS, AND ELECTRICAL FROM ABANDONED PLANT WATER SYSTEM. ONCE DEMOLITION IS COMPLETE PROVIDE A FINISHED FLOOR WHERE CONCRETE PADS ARE REMOVED. FINISHED FLOOR TO MATCH ADJACENT FINISHED FLOORS.
3. SLUDGE WITHDRAWAL PIPING SHALL TERMINATE 36" ABOVE OUTSIDE GRADE.
4. CONTRACTOR TO PAINT EQUIPMENT PADS FOR BLOWERS AND SURGE CONTROL PANELS YELLOW.
5. CONTRACTOR TO INSTALL ANTI-SLIP FLOOR COATING TO BASEMENT FLOORS AFTER ALL EQUIPMENT WORK IS COMPLETE.
6. WALL PENETRATION (TYP.) SEE DETAIL 3 THIS SHEET.
7. CONTRACTOR TO REMOVE EXISTING EYEWASH, PROVIDE AND INSTALL NEW COMBINATION SAFETY SHOWER AND EYEWASH STATION INCLUDING ALL NECESSARY SUPPLY AND DRAIN PIPING. SEE GENERAL NOTES 3 AND 4 ON CW-205.
8. CONTRACTOR TO PROVIDE AND INSTALL NEW COMBINATION SAFETY SHOWER AND EYEWASH STATION INCLUDING ALL NECESSARY SUPPLY AND DRAIN PIPING. SEE GENERAL NOTES 3 AND 4 ON CW-205.
9. REMOVE EXISTING VENT AND PROVIDE NEW VENT. THE NEW VENT SHALL BE THE SAME DIMENSIONS AS THE EXISTING VENT.
10. CONTRACTOR TO REPAIR MISSING OR DAMAGED TILES OUTSIDE OF THE SHOWER. TILES TO MATCH EXISTING.
11. CONTRACTOR TO REPLACE CONCRETE WALKWAY.
12. CONTRACTOR TO PROVIDE AND INSTALL SURFACE-MOUNT CABINET SIZED FOR A 2.5 GALLON FIRE EXTINGUISHER OF 22 GAUGE (MINIMUM) COLD-ROLLED STEEL CONSTRUCTION, PHOSPHATE-TREATED AND BAKED WHITE ENAMEL FINISH, WITH CHROME "D" FRONT HANDLE AND CLEAR ACRYLIC GLAZING IN DOOR.

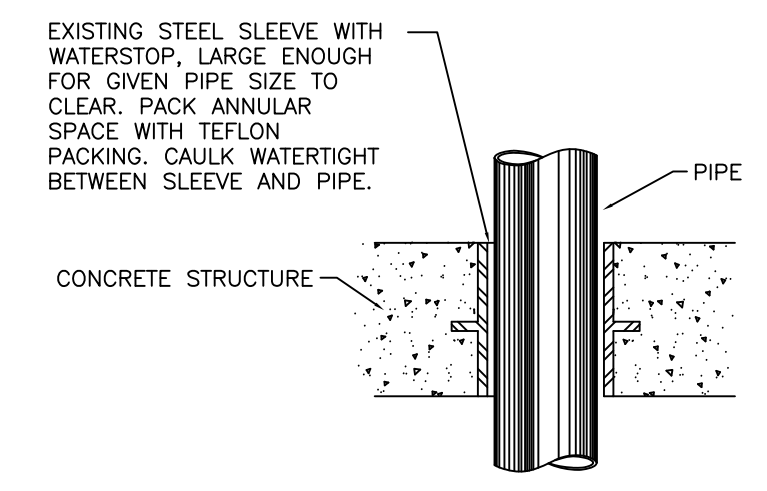
NOTE:  
1. CONTRACTOR TO PAINT ALL PADS FOR EQUIPMENT AND CONTROL PANELS SAFETY YELLOW.



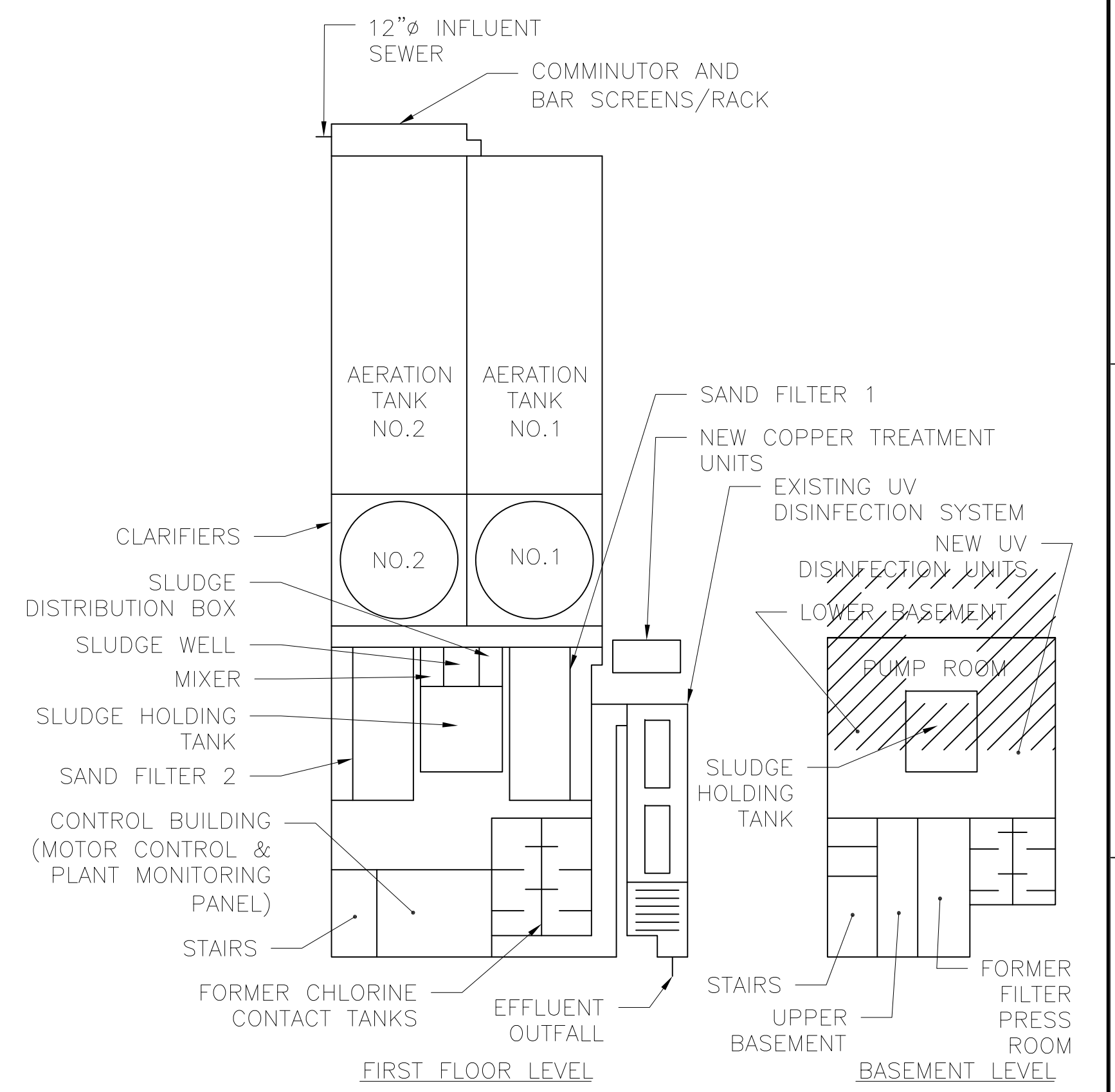
2 NEW SLUDGE HOLDING TANK PUMP-OUT LINE ISOMETRIC ELEVATION VIEW  
CW-206 SCALE:NOT TO SCALE



3 DETAIL OF SEALING PIPE PENETRATION  
CW-206 SCALE:NOT TO SCALE



4 DETAIL OF SEALING PIPE IN EXISTING PENETRATION  
CW-206 SCALE:NOT TO SCALE



KEY PLAN  
SCALE:NO SCALE

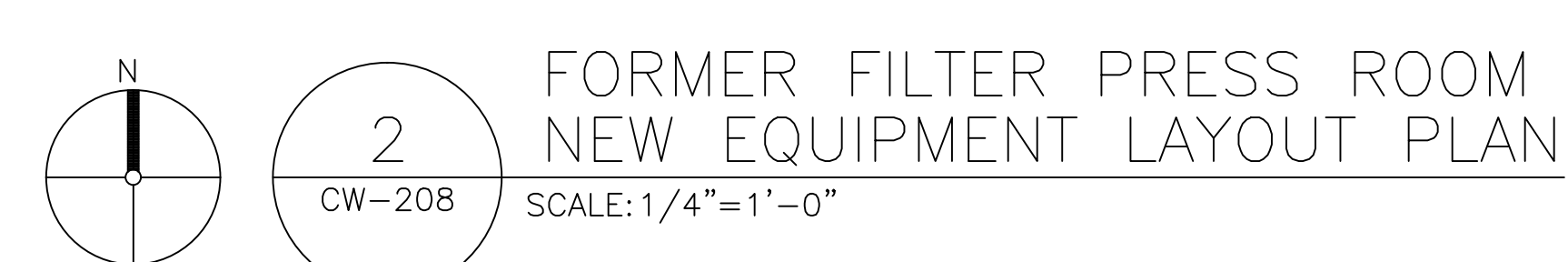
<b>CONSULTANTS:</b>  49 South Main Street Suite 200 Pittston, PA 18640 tel: 570.654.2473 fax: 570.654.4880 www.reillyengineering.com		<b>ARCHITECT/ENGINEERS:</b>  NORTHEAST INFRASTRUCTURE, LLC 1100 CHURCH STREET HONOLULU, HI 96813 570-253-0846 OFFICE 570-253-1935 FAX WWW.NEINFRA.COM		<b>Drawing Title</b> BASEMENT FLOOR PLAN AND SECTION  <b>Approved Project Director</b> - VA NUJCS PLANNING AND ENGINEERING		<b>Project Title</b> MODERNIZE WASTEWATER TREATMENT PLANT  <b>Location</b> 151 KNOLL-CROFT ROAD, LYONS, NJ  <b>Date</b> 07/19/2018 <b>Checked</b> J.S.D. <b>Drawn</b> D.J.P.		<b>Project Number</b> 561A4-13-108  <b>Building Number</b>  <b>Drawing Number</b> CW-206 Dwg. 12 of 38		<b>Office of Construction and Facilities Management</b> 	
---	--	--	--	---	--	---	--	---	--	---	--



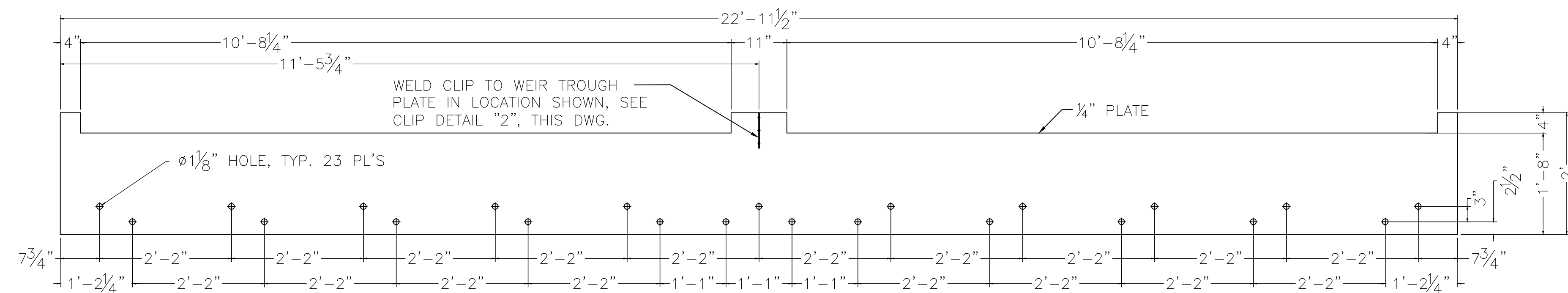
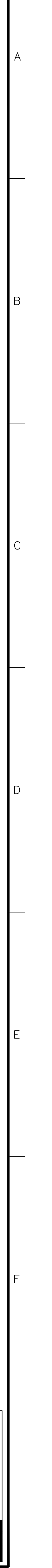




- 3 FILTER PRESS SUPPORT DEMO SECTION  
CW-208 SCALE: 1/2"=1'-0"

 Department of  
Veterans AffairsVA FORM 08-6231





WEIR TROUGH PLATE  
DETAIL "E" (THREE REQ.)

SCALE: 3/4"=1'-0"

SCALE: 1-1/2"=1'-0"

AFTER COMPLETE WELDING AND FABRICATION OF THE TANK, THE FOLLOWING WILL OCCUR:

SURFACE PREPARATION:  
ALL SURFACES SHALL RECEIVE A SSPC-10 NEAR  
WHITE METAL FINISH OBTAINING A 1.5 TO 3.0 MIL  
SURFACE PROFILE.

PAINT:  
INTERIOR AND EXTERIOR APPLICATION THICKNESS  
SHALL BE 8 TO 10 MILS D.F.T. OF TNEMEC  
46H-413 COAL TAR EPOXY.

COLOR: BLACK  
FINISH: SATIN

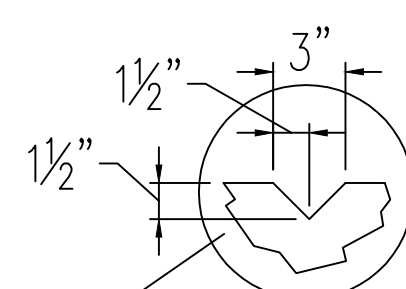
WELD CLIP TO WEIR TROUGH  
PLATE IN LOCATION SHOWN SEE  
HEAD BOLTS PER CLIP FOR  
INSTALLATION OF SCUM BAFFLE.

NOTE:  
(TWO) 1/2" DIA. x 2"  
LG. HEX HEAD BOLTS  
FOR INSTALLATION OF  
SCUM TROUGH.

SCUM TROUGH. FIELD  
TO BOLT IN PLACE.

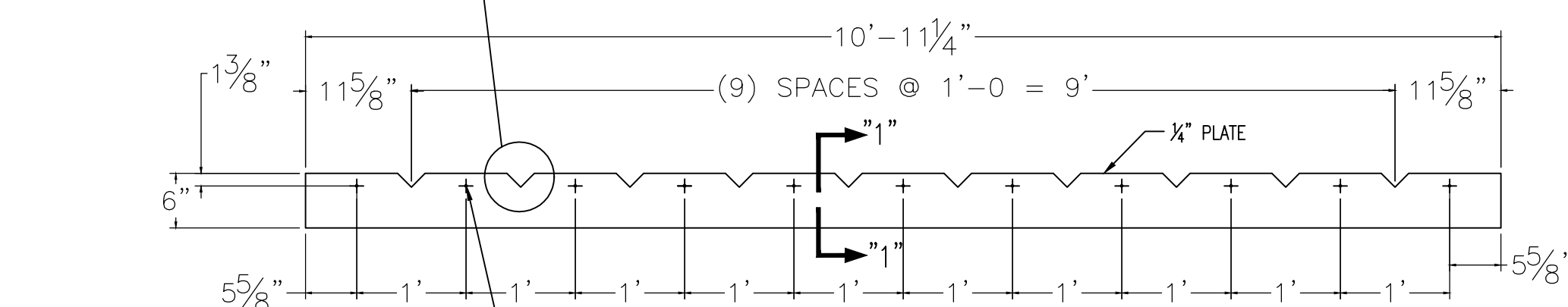
NOTE:  
(23) 3/4" DIAMETER x 3" LG. CONCRETE  
ANCHOR BOLTS PER WEIR TROUGH PLATE  
FOR INSTALLATION OF WEIR TROUGH PLATES.

SCALE: 3/4"=1'-0"



WEIR PLATE CLAMP  
DETAIL D (88 REQ.)

SCALE: 3"=1'-0"



1/2"-13 ALL THD. ROD x 1 3/8"  
LG. WELD ALL THD. ROD TO  
WEIR PLATE, TYP. 11 PL'S

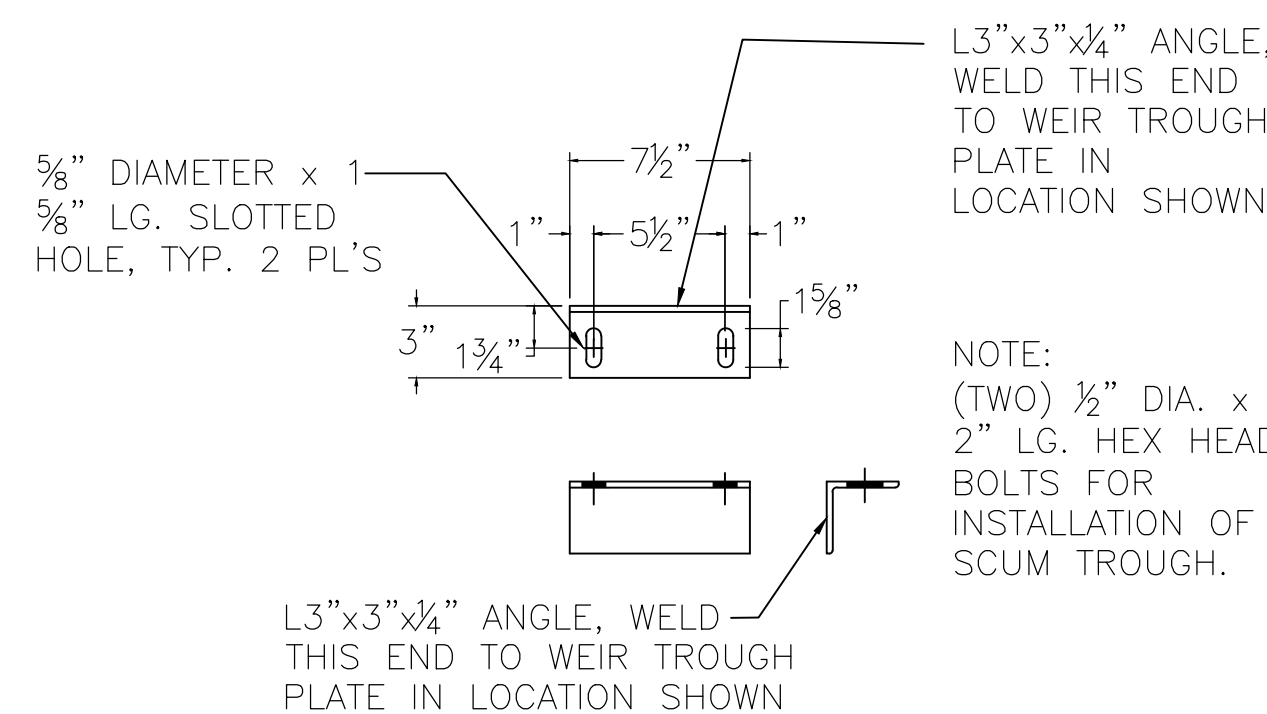
SCALE: 3/4"=1'-0"

SCALE: 3/4"=1'-0"

NOTES:

- 1) SEE DWG. CW-211 FOR LOCATION AND ORIENTATION OF WEIR TROUGH ASS'Y.
- 2) (92)  $\frac{3}{4}$ " DIAMETER x 3" LG. CONCRETE ANCHOR BOLTS FOR INSTALLATION OF WEIR TROUGH PLATES.
- 3) EQUIPMENT MANUFACTURER TO PROVIDE A COMPLETE CLARIFIER REPLACEMENT PACKAGE FOR AN INTEGRATED FULLY OPERATIONAL CLARIFIER SYSTEM.
- 4) DETAILS TYPICAL FOR TWO CLARIFIERS.

SCALE: 1-1/2"=1'-0"



SCALE: 1-1/2"=1'-0"

## 1

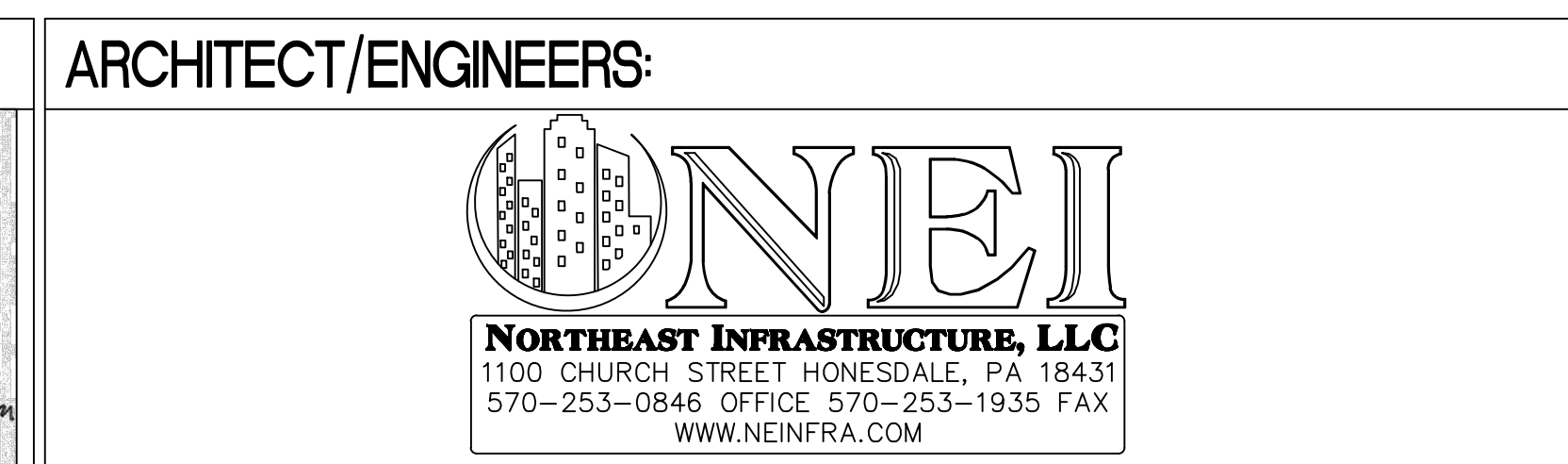
CW-210

# CONSULTANTS:


**Reilly**  
 ASSOCIATES SINCE 1930  
 ENGINEERING / ENVIRONMENTAL / SURVEYING

49 South Main Street  
 Suite 200  
 Pittston, PA 18640  
 tel: 570.654.2412  
 fax: 570.654.6880  
[www.reillyengineering.com](http://www.reillyengineering.com)

1000 North 10th Street  
 Suite 200  
 York, PA 17402  
 tel: 717.765.1100  
 fax: 717.765.1101  
[www.reillyengineering.com](http://www.reillyengineering.com)



Project Title		
MODERNIZE WASTEWATER TREATMENT PLANT		
Location		
151 KNOLLCROFT ROAD, LYONS, NJ		
Date	Checked	Drawn
07/19/2018	J.S.D.	B.V.N

Office of  
Construction  
and Facilities  
Management

 Department of  
Veterans Affairs



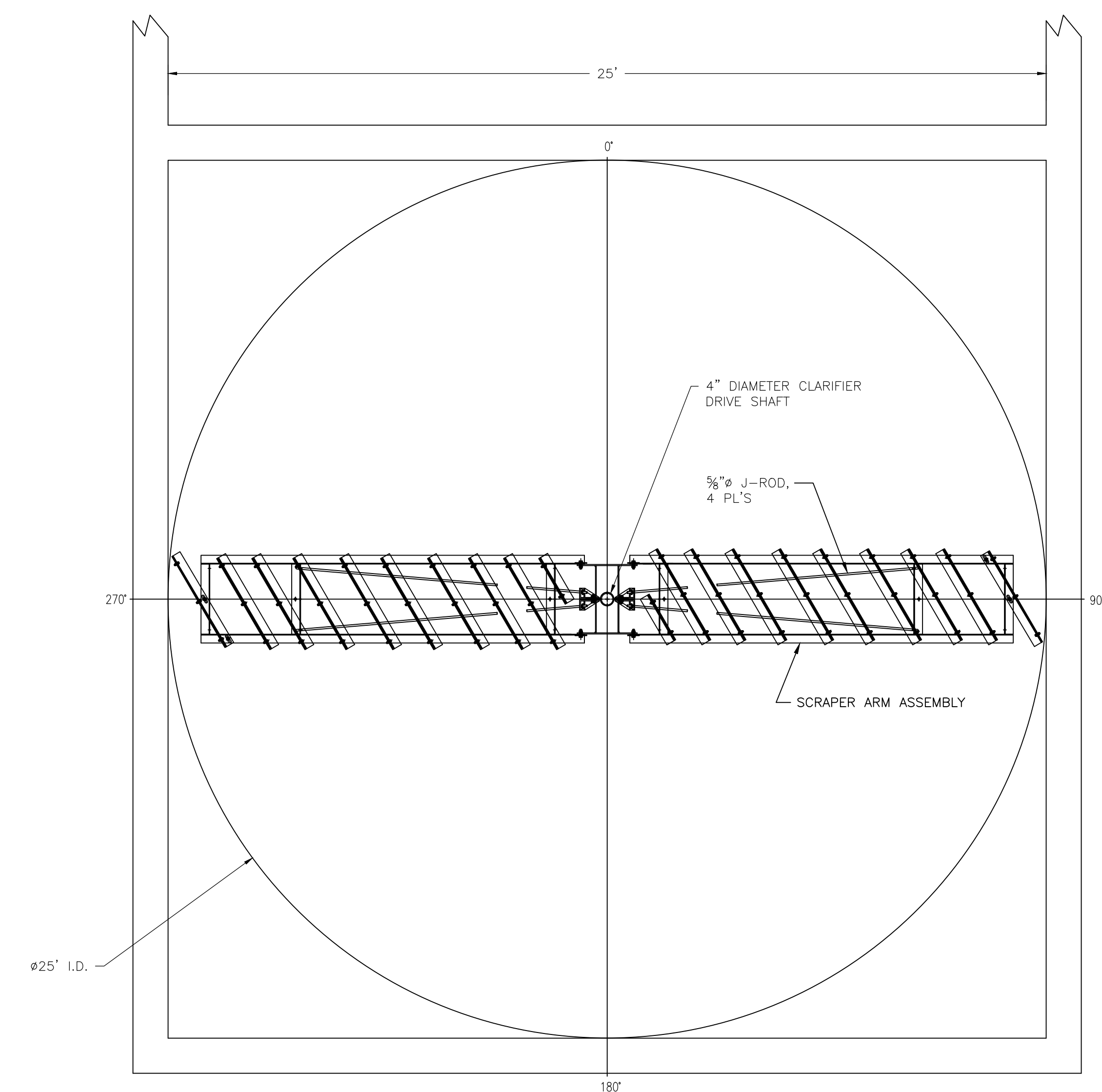
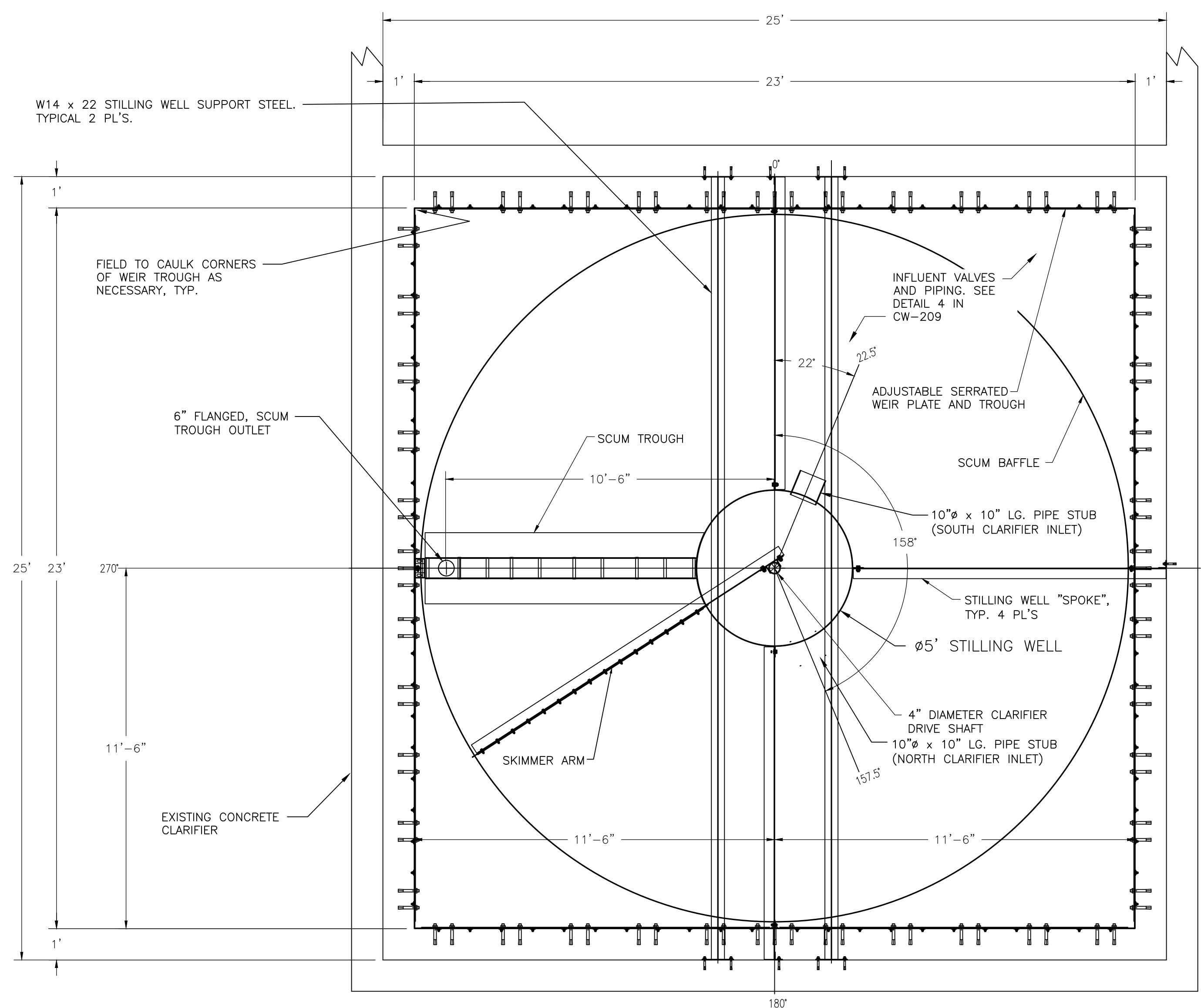


AFTER COMPLETE WELDING AND FABRICATION OF THE TANK, THE FOLLOWING WILL OCCUR:

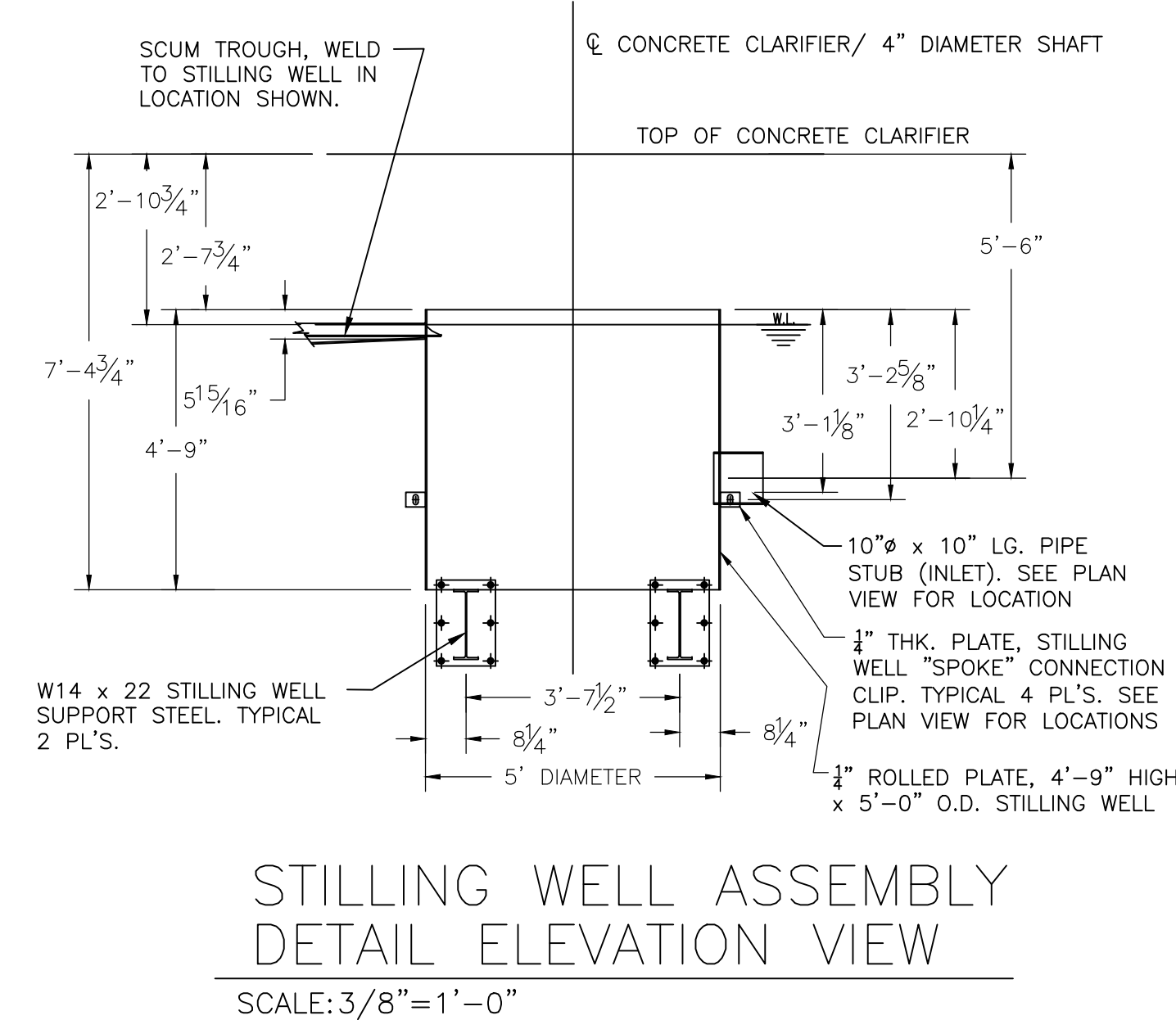
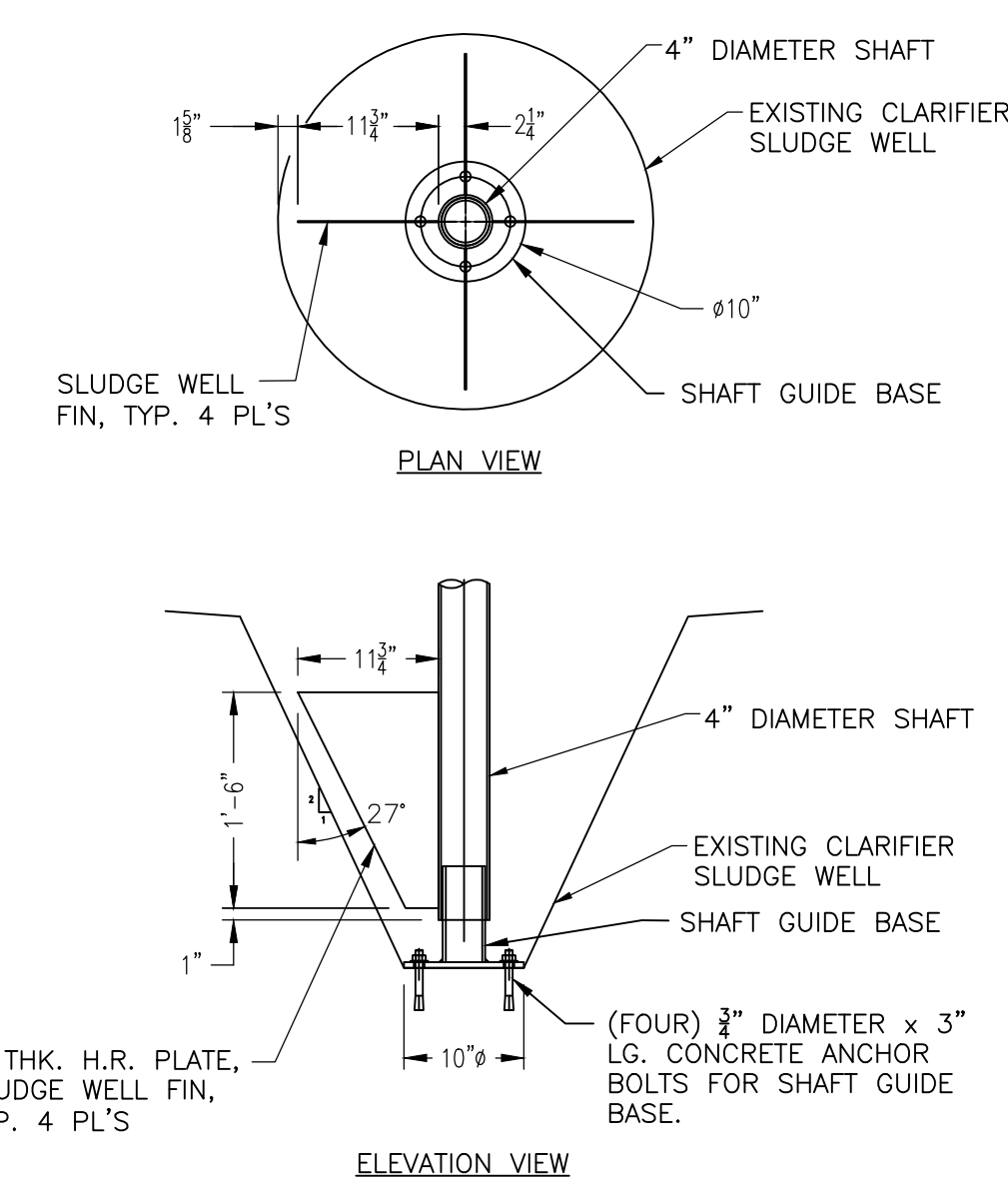
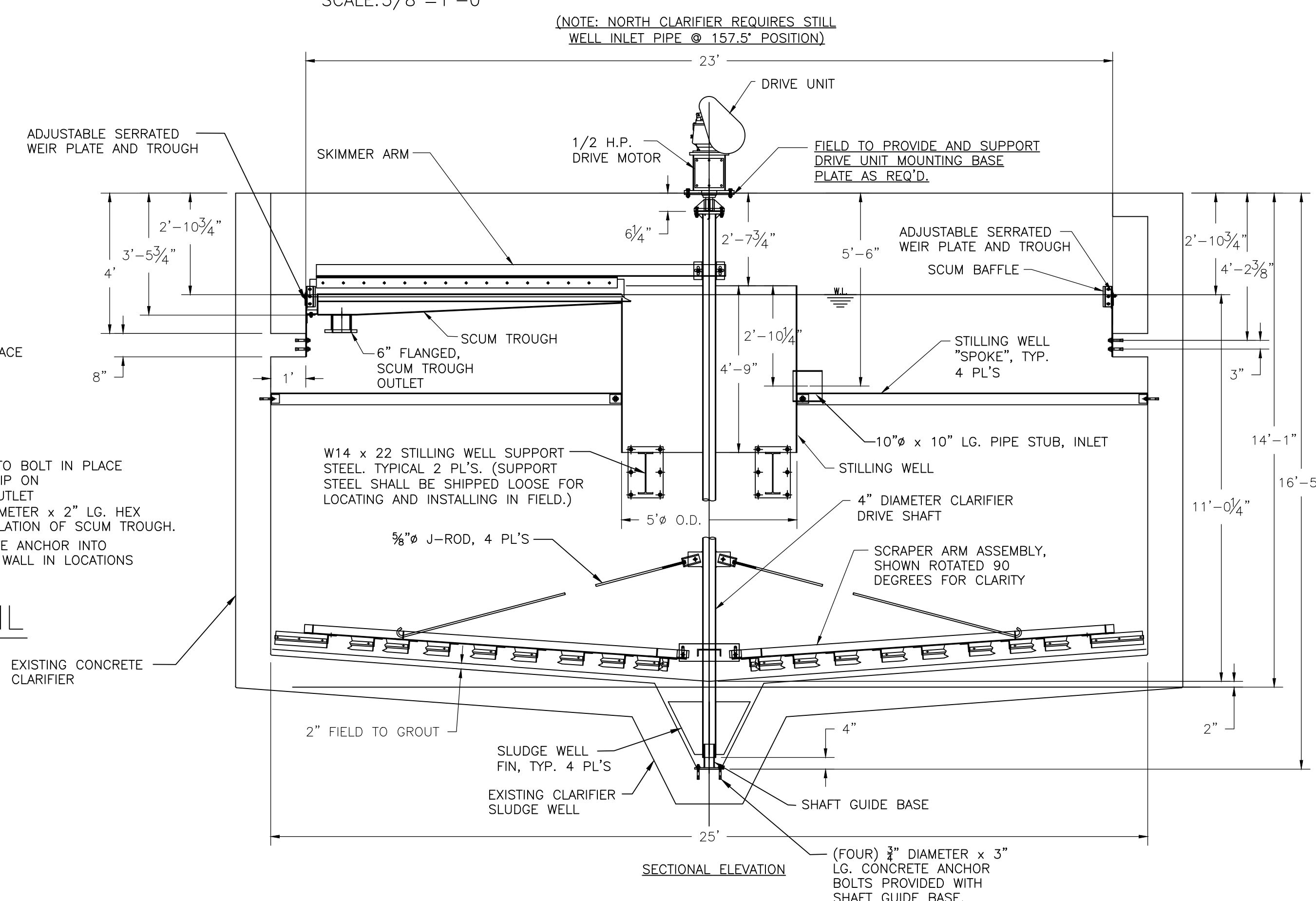
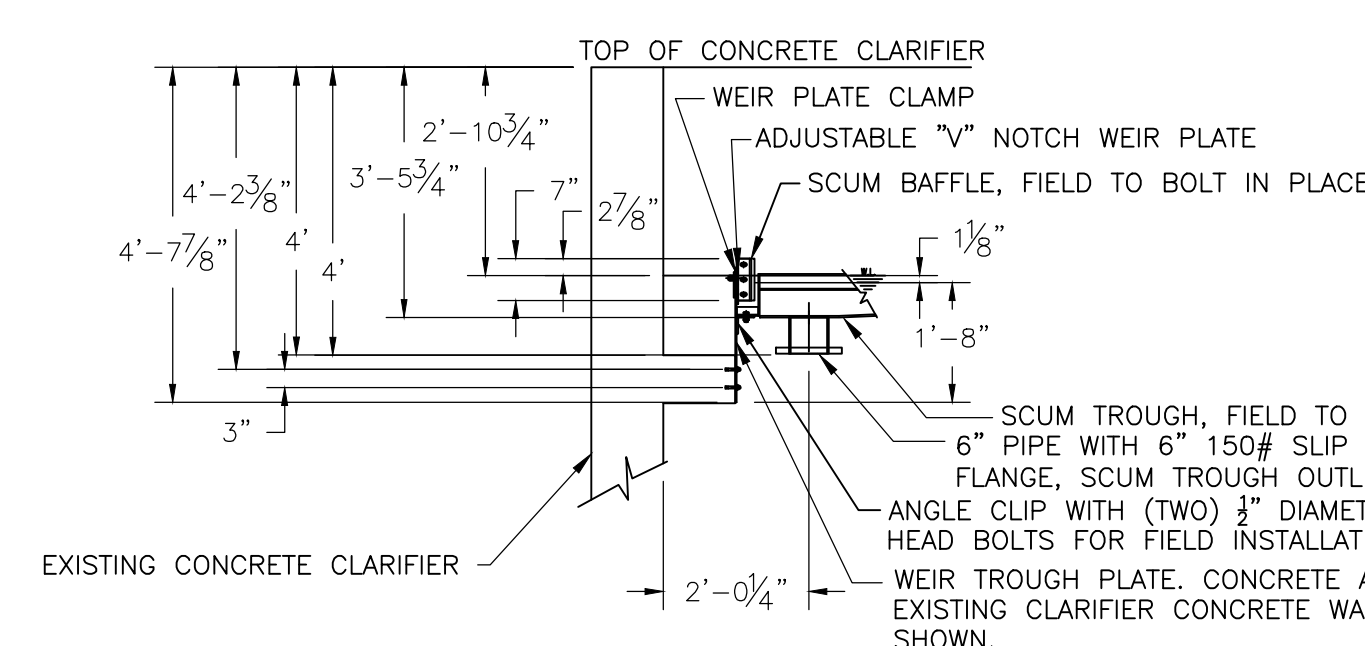
SURFACE PREPARATION:  
ALL SURFACES SHALL RECEIVE A SSPC-10  
NEAR WHITE METAL FINISH OBTAINING A 1.5  
TO 3.0 MIL SURFACE PROFILE.

PAINT:  
INTERIOR AND EXTERIOR APPLICATION  
THICKNESS SHALL BE 8 TO 10 MILS D.F.T.  
OF TNEMEC 46H-413 COAL TAR EPOXY.

COLOR: BLACK  
FINISH: SATIN



- NOTES:**
- 1.) ALL INTERTANK PIPING AND CONNECTING PIPING TO BE FURNISHED AND INSTALLED.
  - 2.) VERIFY ALL DIMENSIONS PRIOR TO ORDERING MATERIALS.
  - 3.) EXISTING CONCRETE TANKS TO REMAIN IN PLACE.
  - 4.) EQUIPMENT MANUFACTURER TO PROVIDE A COMPLETE CLARIFIER REPLACEMENT PACKAGE FOR AN INTEGRATED FULLY OPERATIONAL CLARIFIER SYSTEM.
  - 5.) DETAILS TYPICAL FOR TWO CLARIFIER INSTALLATIONS.



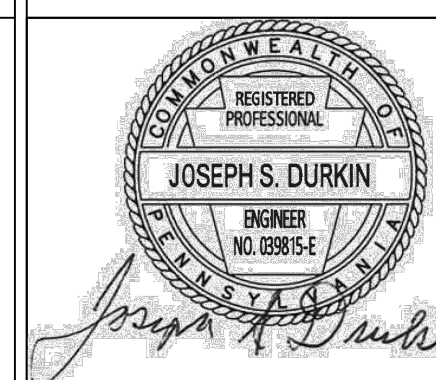
25'-0" DIA. CONCRETE  
CIRCULAR MECHANICAL CLARIFIER  
SCALE: 3/8"=1'-0"

[illegible]

CONSULTANTS:



**49 South Main Street  
Suite 200  
Pittston, PA 18640  
tel: 570.654.2473  
fax: 570.654.6880  
[www.reillyengineering.com](http://www.reillyengineering.com)**



ARCHITECT/ENGINEERS:



Drawing Title	25'-0" DIA. CONCRETE CIRCULAR MECHANICAL CLARIFIER
---------------	---

Approved: Project Director

-

-

VA NUHCS PLANNING AND ENGINEERING

Project Title	MODERNIZE WASTEWATER TREATMENT PLANT
---------------	--

Location		
151 KNOLL CROFT ROAD, LYONS, NJ		
Date	Checked	Dra
07/19/2018	J.S.D.	E

Checked
J.S.D.

Drawn
B.V.N.

Project Number	561A4-13-108
----------------	--------------

Building Number

	Drawing Number

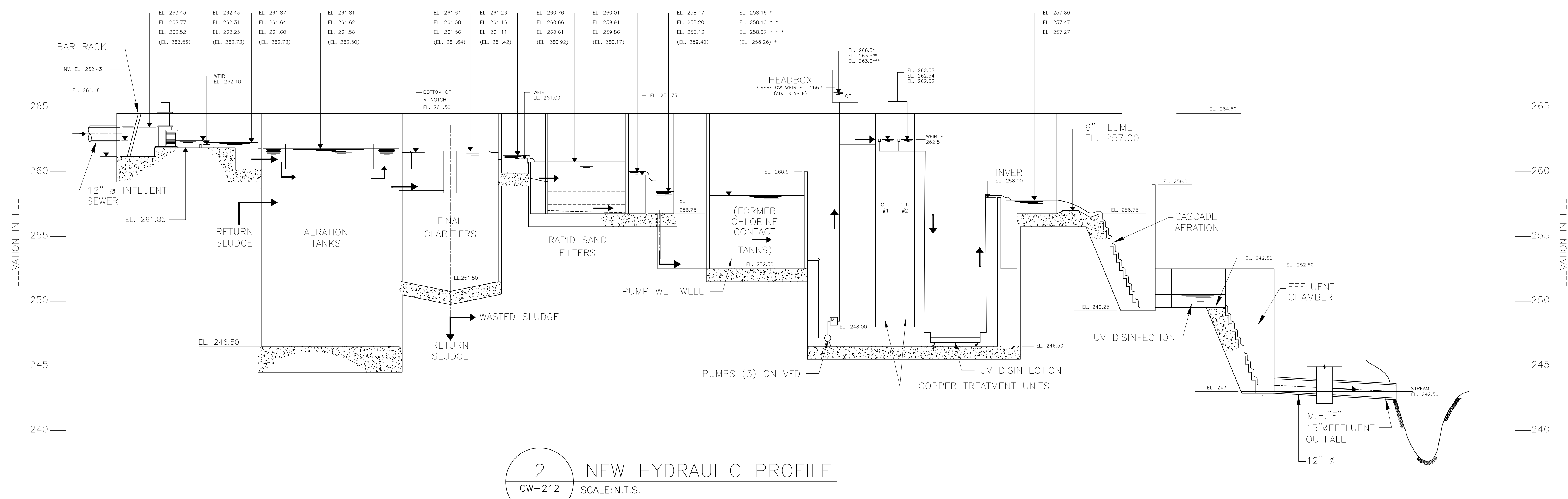
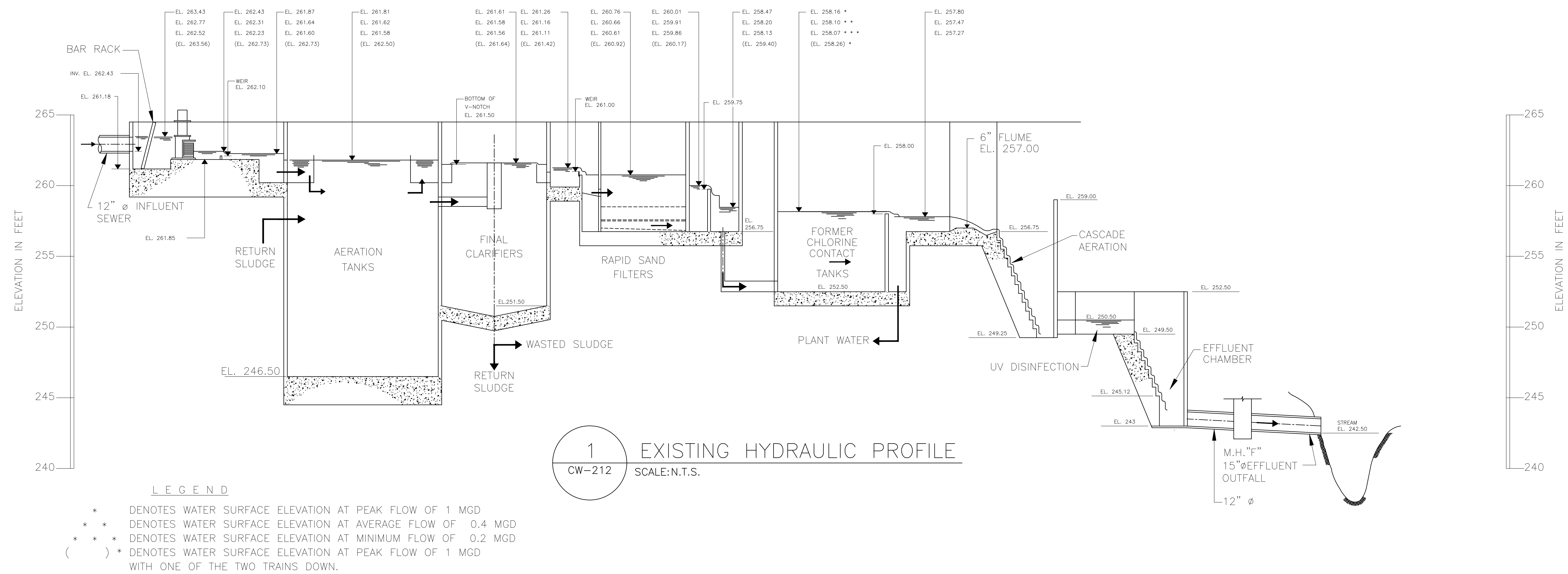
CW-211

Page 17 of 38

CONSTRUCTION  
DOCUMENTS

Office of  
Construction  
and Facilities  
Management



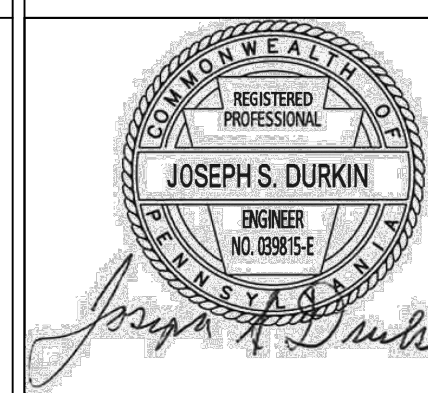


-	-
-	-
-	-
-	-
-	-
-	-
-	-
-	-
-	-
<b>Revisions:</b>	<b>Date</b>

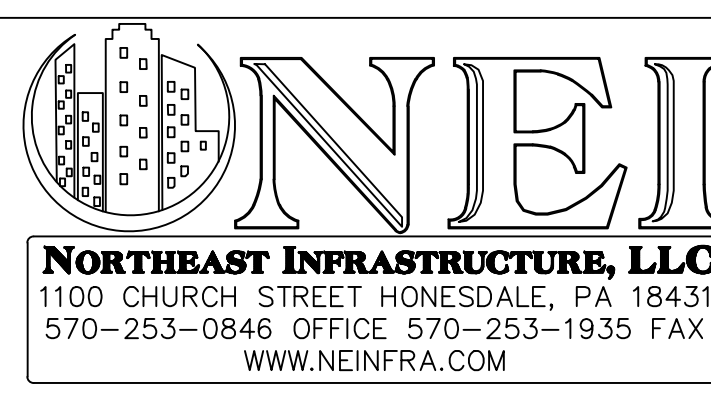
CONSULTANTS:



49 South Main Street  
Suite 200  
Pittston, PA 18640  
tel: 570.654.2473  
fax: 570.654.6880  
[www.reillyengineering.com](http://www.reillyengineering.com)



ARCHITECT/ENGINEERS:



Drawing Title	HYDRAULIC PROFILE
---------------	-------------------

Approved: Project Director  
-  
-  
VA NJHCS PLANNING AND ENGINEERING

Project Title  
MODERNIZE  
WASTEWATER  
TREATMENT PLANT

Location		
151 KNOLLCROFT ROAD, LYONS, NJ		
Date	Checked	Drawn
07/19/2018	J.S.D.	D.J.P.

CONSTRUCTION  
DOCUMENTS

Project Number 561A4-13-108
Building Number

Drawing Number  
**CW-212**  
Dwg 18 of 38

Office of  
Construction  
and Facilities  
Management

