

GENERAL CONSTRUCTION NOTES

DESIGN CODES AND SPECIFICATIONS

BUILDING CODE REQUIREMENTS FOR STRUCTURAL CONCRETE (ACI 318-08)
 STEEL CONSTRUCTION MANUAL, FOURTEENTH EDITION
 STRUCTURAL WELDING CODE - STEEL (AWS D1.1)

CONCRETE

A. REINFORCED CONCRETE DESIGN FOLLOWS ACI 318-08 EXCEPT FOR LIQUID CONTAINMENT STRUCTURES WHICH ARE DESIGNED IN ACCORDANCE WITH ACI 350-06, "CODE REQUIREMENTS FOR ENVIRONMENTAL ENGINEERING CONCRETE STRUCTURES AND COMMENTARY."

B. UNLESS NOTED OTHERWISE, ALL CONCRETE SHOWN IS STRUCTURAL CONCRETE WITH A 5000 PSI 28-DAY COMPRESSIVE STRENGTH AND TYPE II PORTLAND CEMENT. REFER TO SECTION 03305.3 OF THE SPECIFICATION.

C. REINFORCEMENT WILL BE NEW BILLET STEEL, CONFORMING TO ASTM A-615 GRADE 60, DEFORMED AND SHALL BE EPOXY COATED.

D. DETAIL, FABRICATE AND ERECT REINFORCING BARS IN ACCORDANCE WITH "DETAILS AND DETAILING OF CONCRETE REINFORCEMENT," (AC 315-99)

E. UNLESS OTHERWISE SHOWN, ALL REINFORCING STEEL SHALL BE PROVIDED WITH MINIMUM CONCRETE COVER AS FOLLOWS:

FOUNDATION SLABS - TOP REINFORCING, 2"
 - BOTTOM REINFORCING, 3"

WALLS - 2"

F. LAP SPLICES AND EMBEDMENTS FOR REINFORCEMENT SHALL FOLLOW THE CHART SHOWN ON THIS DRAWING UNLESS OTHERWISE INDICATED ON THE DRAWINGS.

G. ANY REVISIONS TO JOINT PLACEMENT, POUR SEQUENCING OR REINFORCING SPLICES MUST BE SUBMITTED TO THE ENGINEER FOR REVIEW AND APPROVAL PRIOR TO SUBMITTAL OF REINFORCING STEEL SHOP DRAWINGS.

H. CURE CONCRETE AT A MINIMUM TEMPERATURE OF 50° FOR SEVEN DAYS, FOLLOWING THE CRITERIA OF ACI 308-R01.

I. CONCRETE SURFACES SHALL BE FINISHED PER SECTION 03300 OF THE SPECIFICATION.

J. CHAMFER EXPOSED CONCRETE EDGES 3/4" X 3/4" UNLESS OTHERWISE NOTED.

K. EQUIPMENT PAD DIMENSIONS, HOUSEKEEPING PAD DIMENSIONS AND OPENINGS FOR HATCHES, DUCTS AND PIPES MUST BE COORDINATED WITH APPROVED EQUIPMENT SHOP DRAWINGS, AND WITH THE REQUIREMENTS SHOWN ON OTHER DRAWINGS, THIS PROJECT SET.

L. THE CONTRACTOR IS RESPONSIBLE FOR MAINTAINING STABILITY AND PREVENTING FLOATION OF STRUCTURES DURING ALL PHASES OF CONSTRUCTION.

STEEL

A. DETAILING, FABRICATION, AND ERECTION OF STEEL TO CONFORM TO THE STEEL CONSTRUCTION MANUAL OF THE AISC.

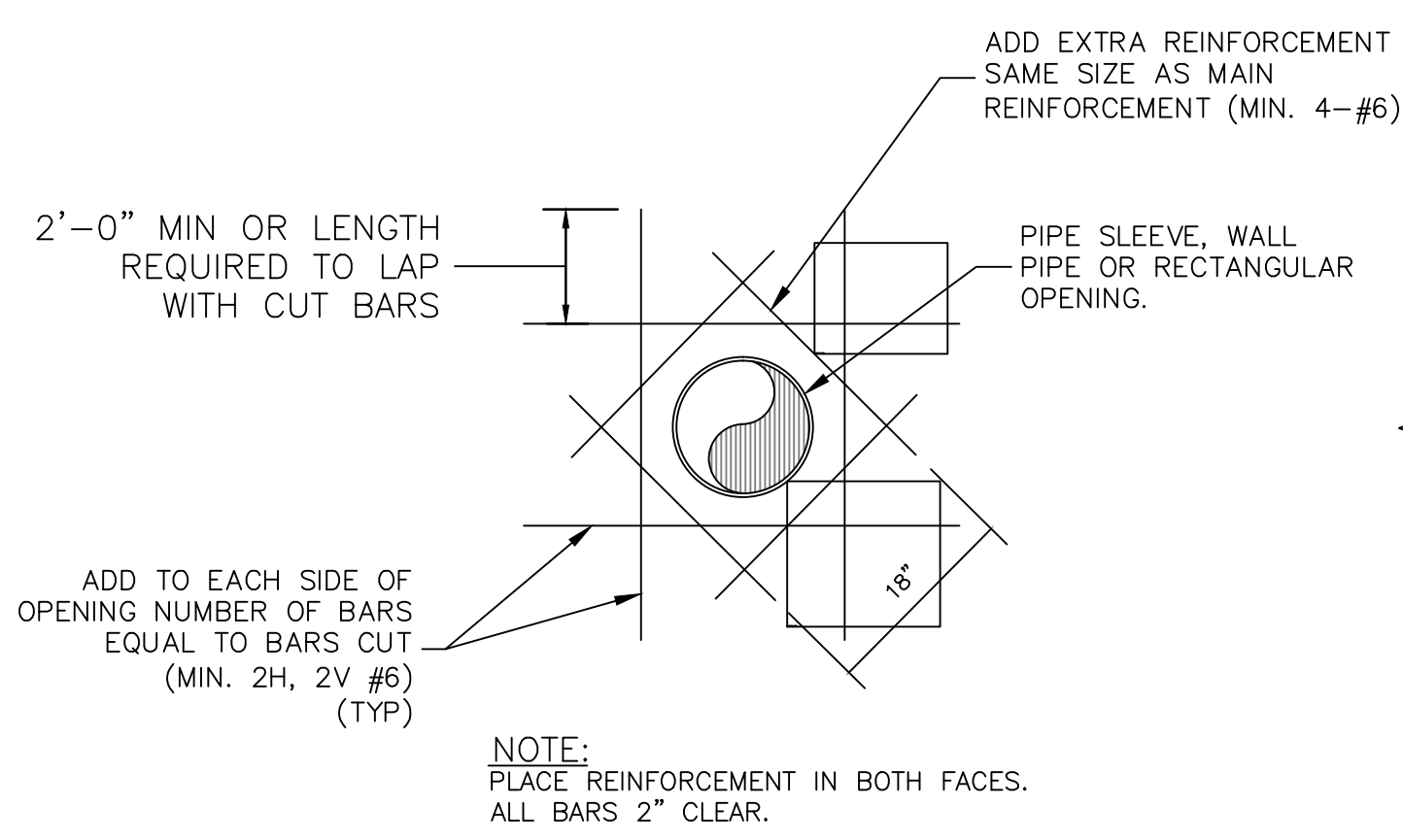
B. STEEL MATERIAL SPECIFICATIONS:
 HSS RECT. ASTM A500, GRADE B, Fy=46KSI
 PLATE ASTM A36
 ANCHOR RODS ASTM F1554, GRADE 36

C. ALL WELDS TO BE MADE WITH E70XX ELECTRODES.

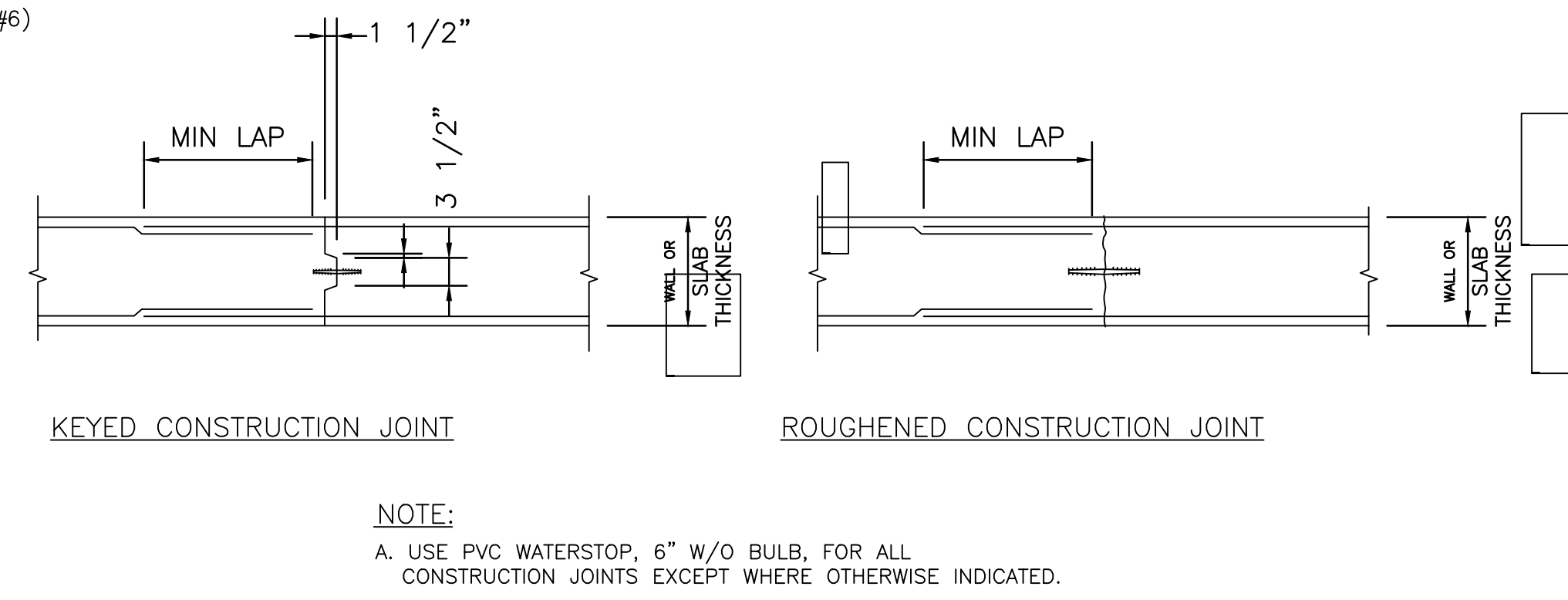
D. ALL CONNECTIONS SHALL BE 1/4" FILET WELDED UNLESS NOTED OTHERWISE.

E. STRUCTURAL STEEL SHALL BE THOROUGHLY CLEANED IN ACCORDANCE WITH SSPC SP-2 AND SP-3 AND COATED WITH A MINIMUM 2 MILS OF FABRICATORS STANDARD RUST INHIBITIVE PRIMER.

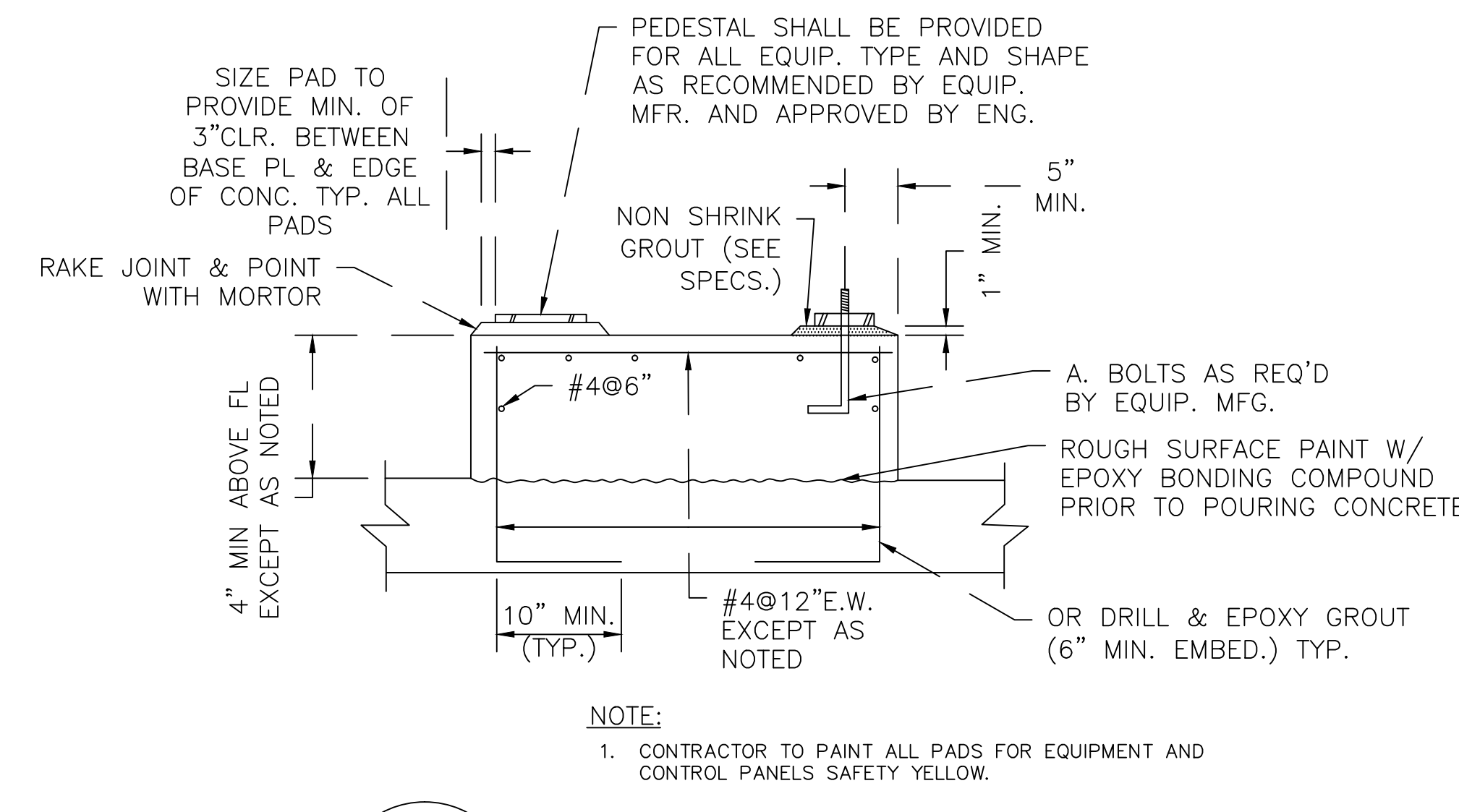
F. ALL EXISTING FIELD DIMENSIONS, ELEVATIONS, AND CONDITIONS AFFECTING WORK UNDER THIS CONTRACT SHALL BE VERIFIED BY THE CONTRACTOR PRIOR TO PREPARATION OF SHOP DRAWINGS AND COMMENCING ANY WORK.



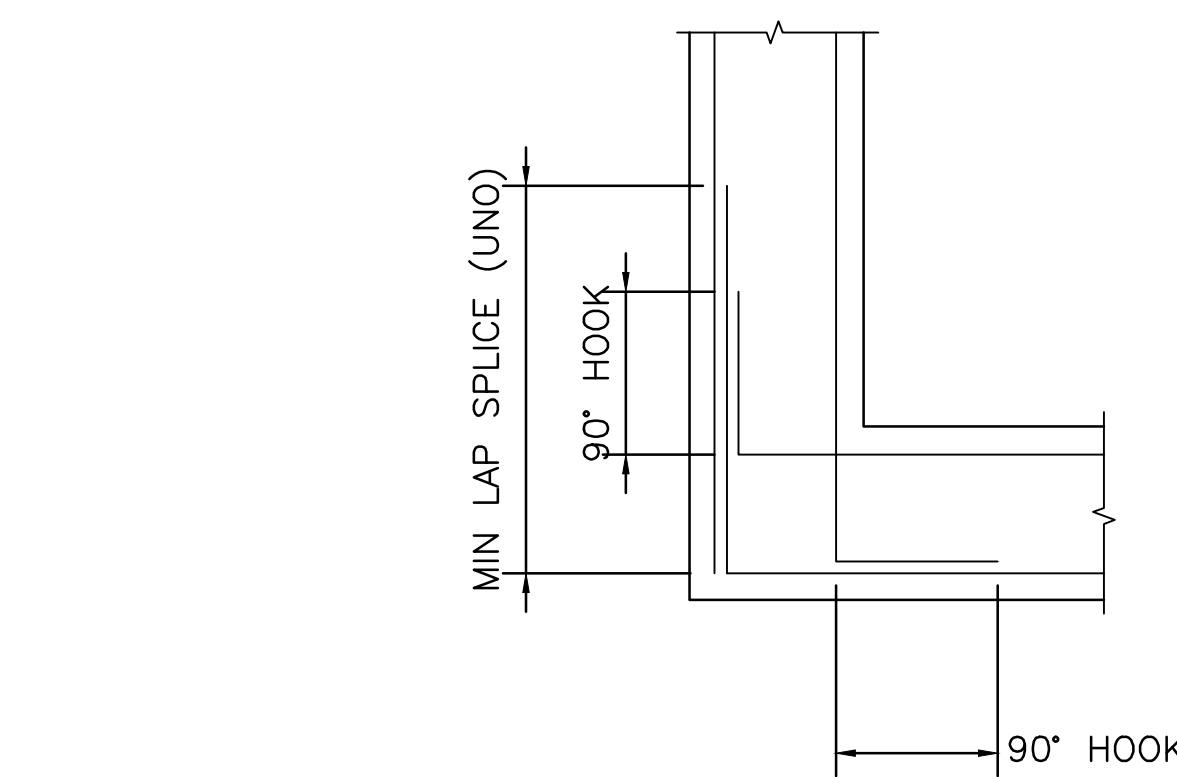
2 WALL/SLAB OPENING REINFORCEMENT
 S-001 SCALE:N.T.S.



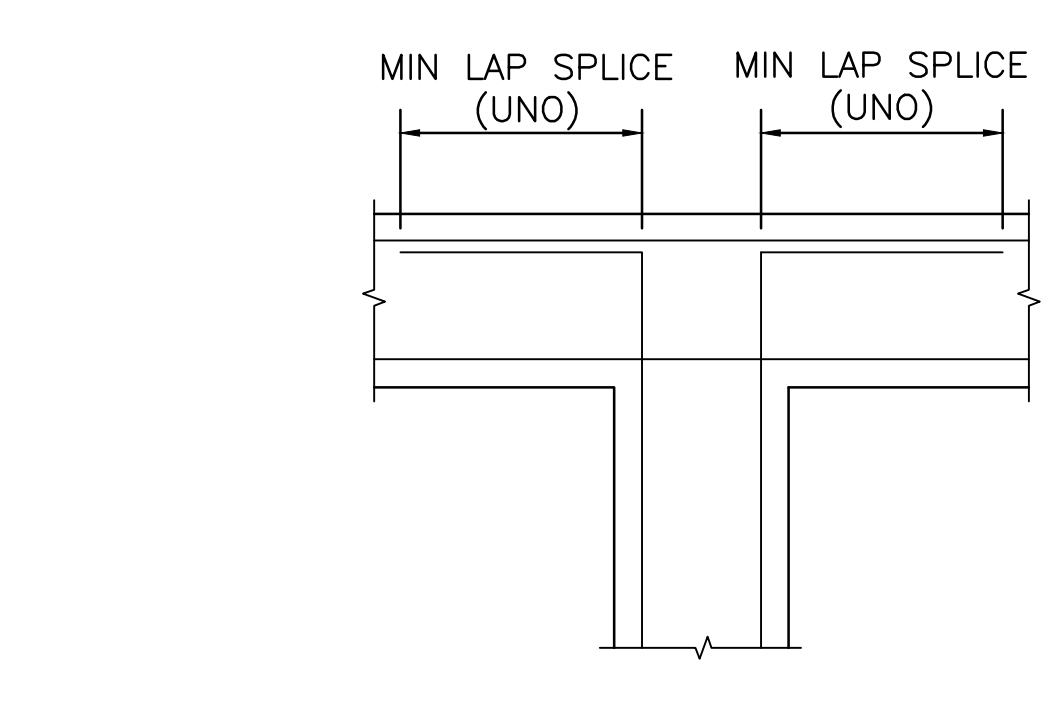
3 CONCRETE CONSTRUCTION JOINT DETAILS
 S-001 SCALE:N.T.S.



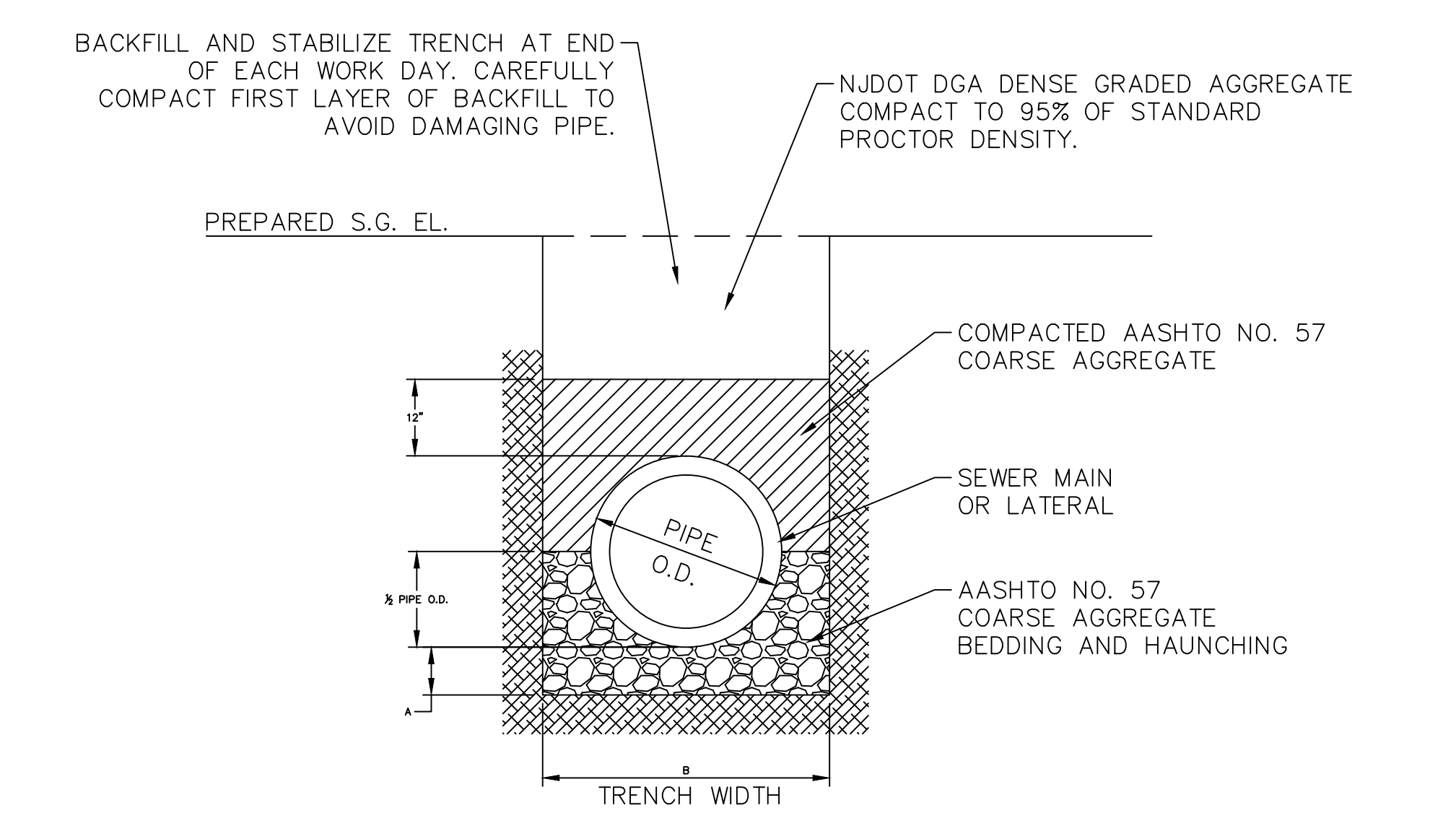
8 EQUIPMENT PAD DETAIL
 S-001 SCALE:N.T.S.



4 CORNER WALL REINFORCEMENT DETAIL
 S-001 SCALE:N.T.S.

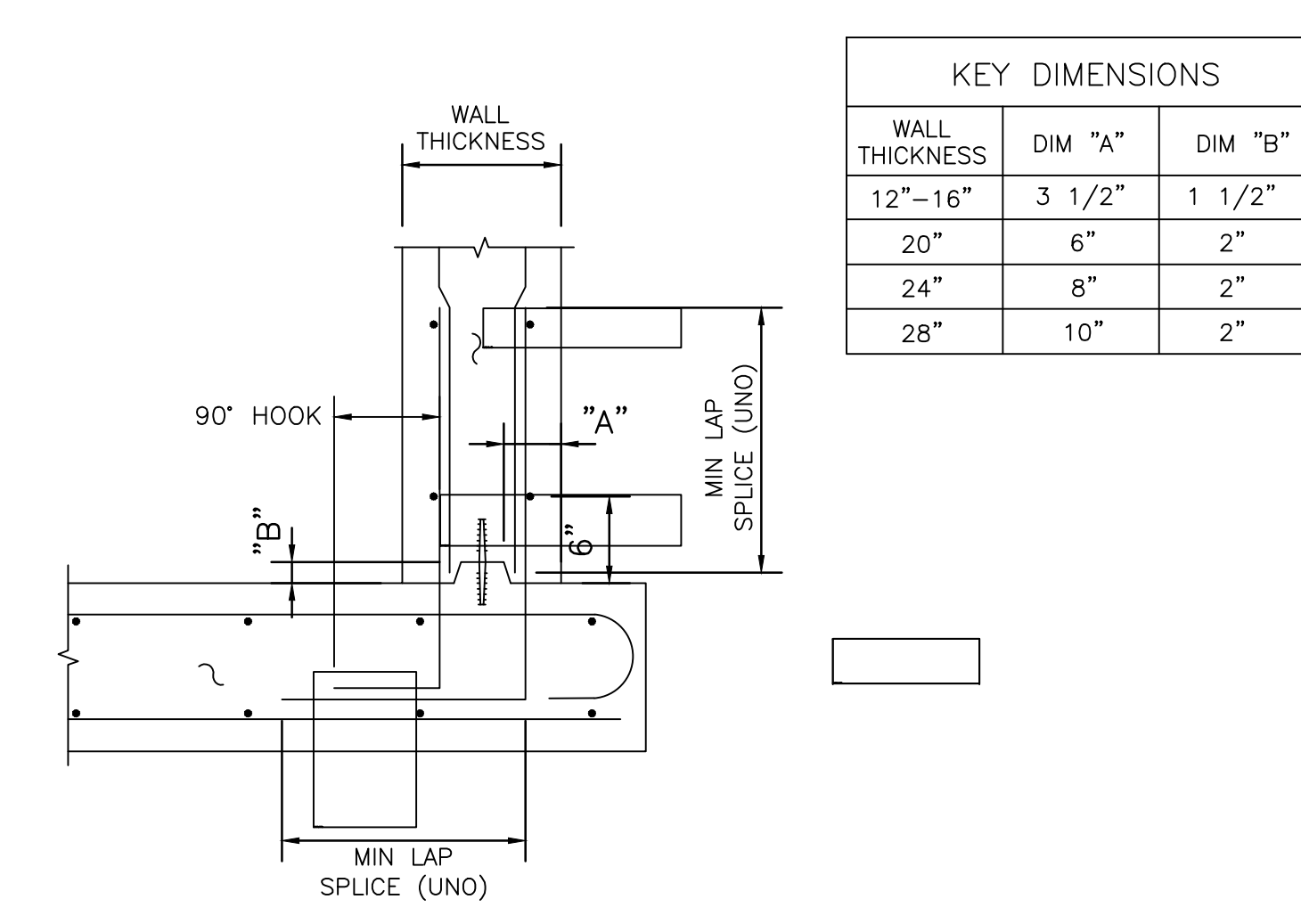


5 INTERIOR WALL REINFORCEMENT DETAIL
 S-001 SCALE:N.T.S.

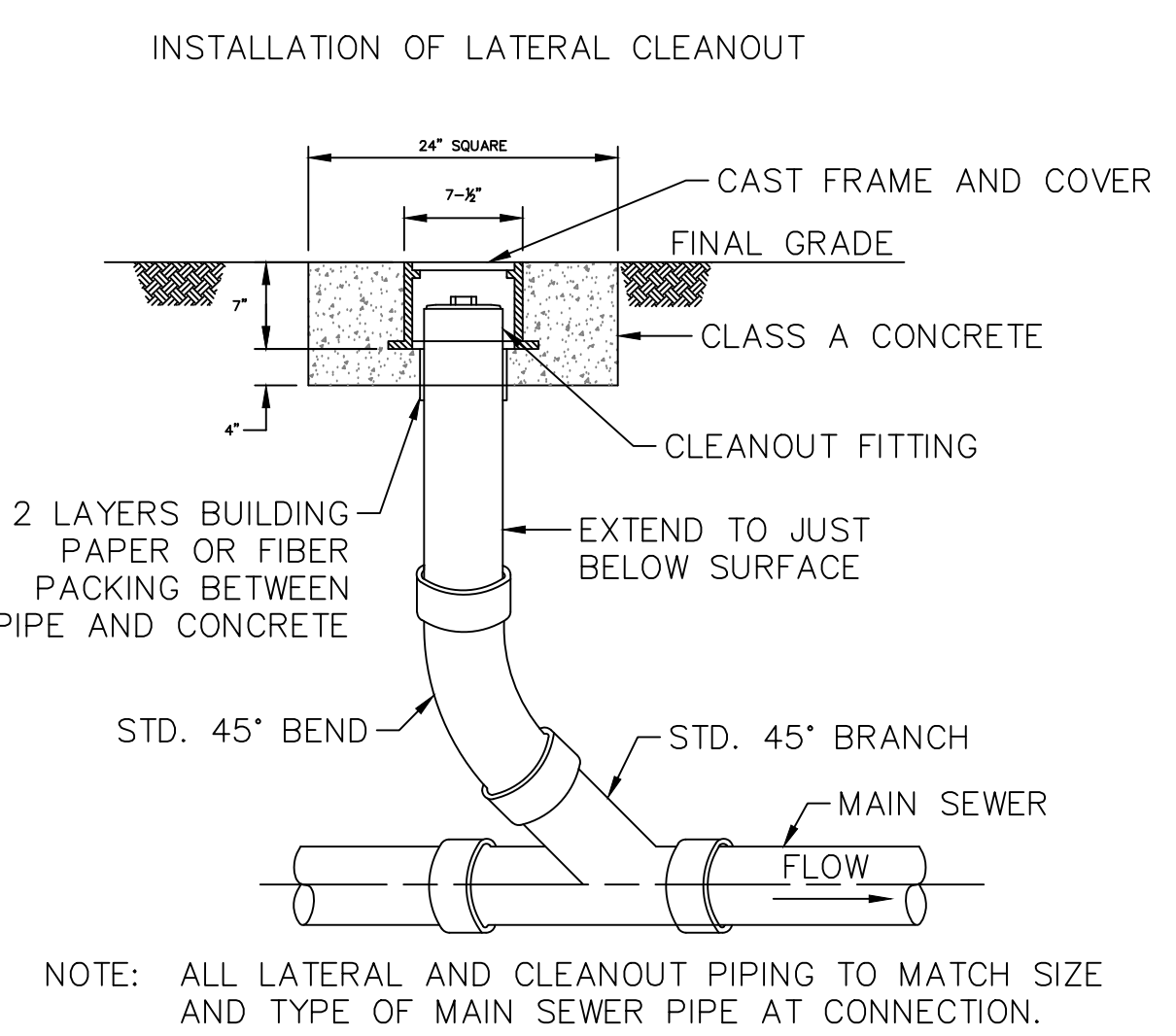


9 TYPICAL GRAVITY SANITARY SEWER TRENCH DETAIL
 S-001 SCALE:NOT TO SCALE

SIZE/O.D.	A	B
UP TO 36"	6" MIN.	O.D. + 1'4"
36" AND LARGER	6" MIN.	O.D. + 1'4"
LATERAL	4" MIN.	O.D. + 1'4"



6 KEYED WALL/SLAB JOINT DETAIL
 S-001 SCALE:N.T.S.



7 CLEANOUT DETAIL
 S-001 SCALE:NOT TO SCALE

BAR SCHEDULE		
BAR SIZE	MIN LAP SPLICE LENGTH (INCHES)	
	TOP BARS	OTHER BARS
3	17	15
4	23	20
5	29	25
6	34	30
7	50	44
8	57	50
9	70	62
10	87	76
11	99	87

NOTES:
 WITH REFERENCE TO ACI 350-06 SECTION 12.2.3
 F'c=5,000 PSI Fy=60,000 PSI.
 TOP BARS ARE HORIZONTAL BARS WITH 12" OF CONCRETE CAST BELOW
 LAP SPLICES ARE TENSION LAPS, CLASS B
 MINIMUM CLEAR COVER IS 2 INCHES. MINIMUM SPACING IS 5 INCHES.

1 SPLICE AND EMBEDMENT CHART
 S-001 SCALE:N.T.S.

CONSTRUCTION DOCUMENTS

CONSULTANTS: ENGINEERING / ENVIRONMENTAL / SURVEYING 49 South Main Street Suite 200 Pottsville, PA 18640 Tel: 570.654.2473 Fax: 570.654.9880 www.reillyengineering.com	ARCHITECT/ENGINEERS: NORTHEAST INFRASTRUCTURE, LLC 1100 CHURCH STREET HONESDALE, PA 18431 570-253-0846 OFFICE 570-253-1935 FAX WWW.NEINFRA.COM	Drawing Title STRUCTURAL DETAILS AND NOTES	Project Title MODERNIZE WASTEWATER TREATMENT PLANT	Project Number 561A4-13-108	Office of Construction and Facilities Management Department of Veterans Affairs	
		Approved Project Director - VA NUJCS PLANNING AND ENGINEERING	Location 151 KNOLL CROFT ROAD, LYONS, NJ	Drawing Number S-001		Date 07/19/2018

