

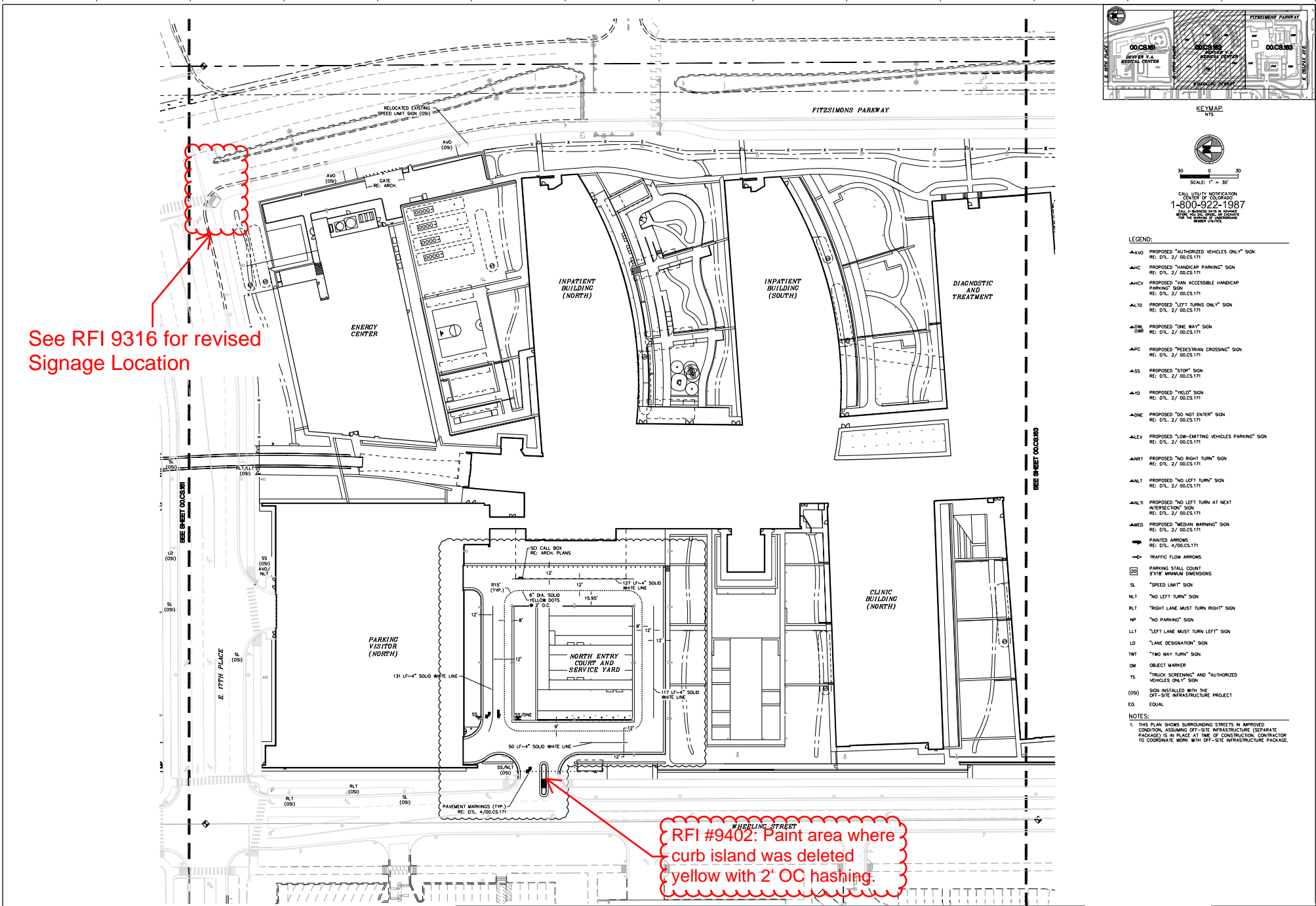
CALL UTILITY NOTIFICATION
CENTER OF COLORADO
1-800-922-1987
FOR ALL GAS, WATER, AND CABLE
LINES BEFORE ANY EXCAVATION
OR OTHER GROUND DISTURBANCE

- LEGEND:
- ▲AVO PROPOSED "AUTHORIZED VEHICLES ONLY" SIGN
RE: DTL: 2/ 00.CS.171
 - ▲HC PROPOSED "HANDICAP PARKING" SIGN
RE: DTL: 2/ 00.CS.171
 - ▲HCV PROPOSED "VAN ACCESSIBLE HANDICAP
PARKING" SIGN
RE: DTL: 2/ 00.CS.171
 - ▲LT0 PROPOSED "LEFT TURNS ONLY" SIGN
RE: DTL: 2/ 00.CS.171
 - ▲DM DWR PROPOSED "ONE WAY" SIGN
RE: DTL: 2/ 00.CS.171
 - ▲PC PROPOSED "PEDESTRIAN CROSSING" SIGN
RE: DTL: 2/ 00.CS.171
 - ▲SS PROPOSED "STOP" SIGN
RE: DTL: 2/ 00.CS.171
 - ▲TD PROPOSED "YIELD" SIGN
RE: DTL: 2/ 00.CS.171
 - ▲ONE PROPOSED "DO NOT ENTER" SIGN
RE: DTL: 2/ 00.CS.171
 - ▲LEV PROPOSED "LOW-EMITTING VEHICLES PARKING" SIGN
RE: DTL: 2/ 00.CS.171
 - ▲NRT PROPOSED "NO RIGHT TURN" SIGN
RE: DTL: 2/ 00.CS.171
 - ▲NLT PROPOSED "NO LEFT TURN" SIGN
RE: DTL: 2/ 00.CS.171
 - ▲NLB PROPOSED "NO LEFT TURN AT NEXT
INTERSECTION" SIGN
RE: DTL: 2/ 00.CS.171
 - ▲MED PROPOSED "MEDIAN WARNING" SIGN
RE: DTL: 2/ 00.CS.171
 - ▲ PAINTED ARROWS
RE: DTL: 4/ 00.CS.171
 - ▲ TRAFFIC FLOW ARROWS
 - ▲ PARKING STALL DIMENT
5'X15' MINIMUM DIMENSIONS
 - SL "SPEED LIMIT" SIGN
 - NLT "NO LEFT TURN" SIGN
 - RLT "RIGHT LANE MUST TURN RIGHT" SIGN
 - NP "NO PARKING" SIGN
 - LLT "LEFT LANE MUST TURN LEFT" SIGN
 - LD "LANE DESIGNATION" SIGN
 - TWT "TWO WAY TURN" SIGN
 - OM OBJECT MARKER
 - TS "TRUCK SCREENING" AND "AUTHORIZED
VEHICLES ONLY" SIGN
 - (OS) SIGN INSTALLED WITH THE
OFF-SITE INFRASTRUCTURE PROJECT
 - EQ. EQUAL

NOTES:
1. THIS PLAN SHOWS SURROUNDING STREETS IN IMPROVED
CONDITION, ASSUMING OFF-SITE INFRASTRUCTURE (SEPARATE
PACKAGE) IS IN PLACE AT TIME OF CONSTRUCTION. CONTRACTOR
TO COORDINATE WORK WITH OFF-SITE INFRASTRUCTURE PACKAGE.

See RFI 9316 for revised
Signage Location

RFI #9402: Paint area where
curb island was deleted
yellow with 2' OC hashing.



| | | | | | | | | | |
|-------------------------|--|---|--|---|--|--|--|---|--|
| CONSULTANTS: | | ARCHITECT/ENGINEERS: H+L SOM CRA SAM ARCHITECTS ENGINEERS <small>H+L Architecture 1700 Blake Street Denver, CO 80202 SOM Group, Inc. 228 South M. Morgan Avenue Suite 1000 Denver, CO 80202 CRA Rumba & Rumba, Inc. 690 Taylor Street Lakewood, CO 80401 S.A. M. Inc. 6002 South 19th Street Denver, CO 80202</small> | | Project #: 554-501 Revision #: Location: AURORA, COLORADO Date: 08/31/2012 | | Project Name: REPLACEMENT MEDICAL CENTER FACILITY, EASTERN COLORADO HEALTH CARE SYSTEM Sheet Number: 00.CS.162 Scale: 1" = 30' Author: Checked: Approved: | | OFFICE OF CONSTRUCTION AND FACILITIES MANAGEMENT | |
|-------------------------|--|---|--|---|--|--|--|---|--|