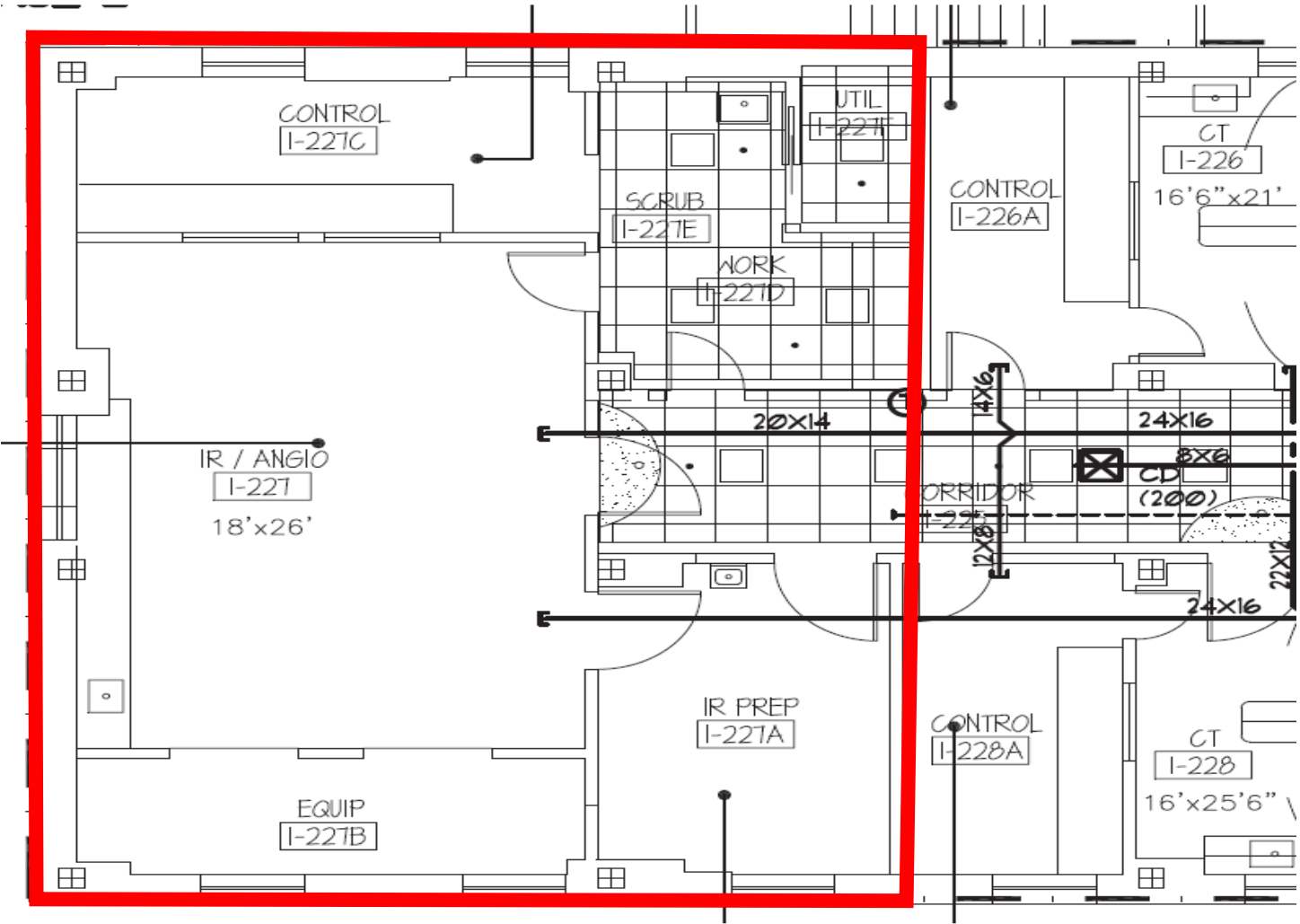
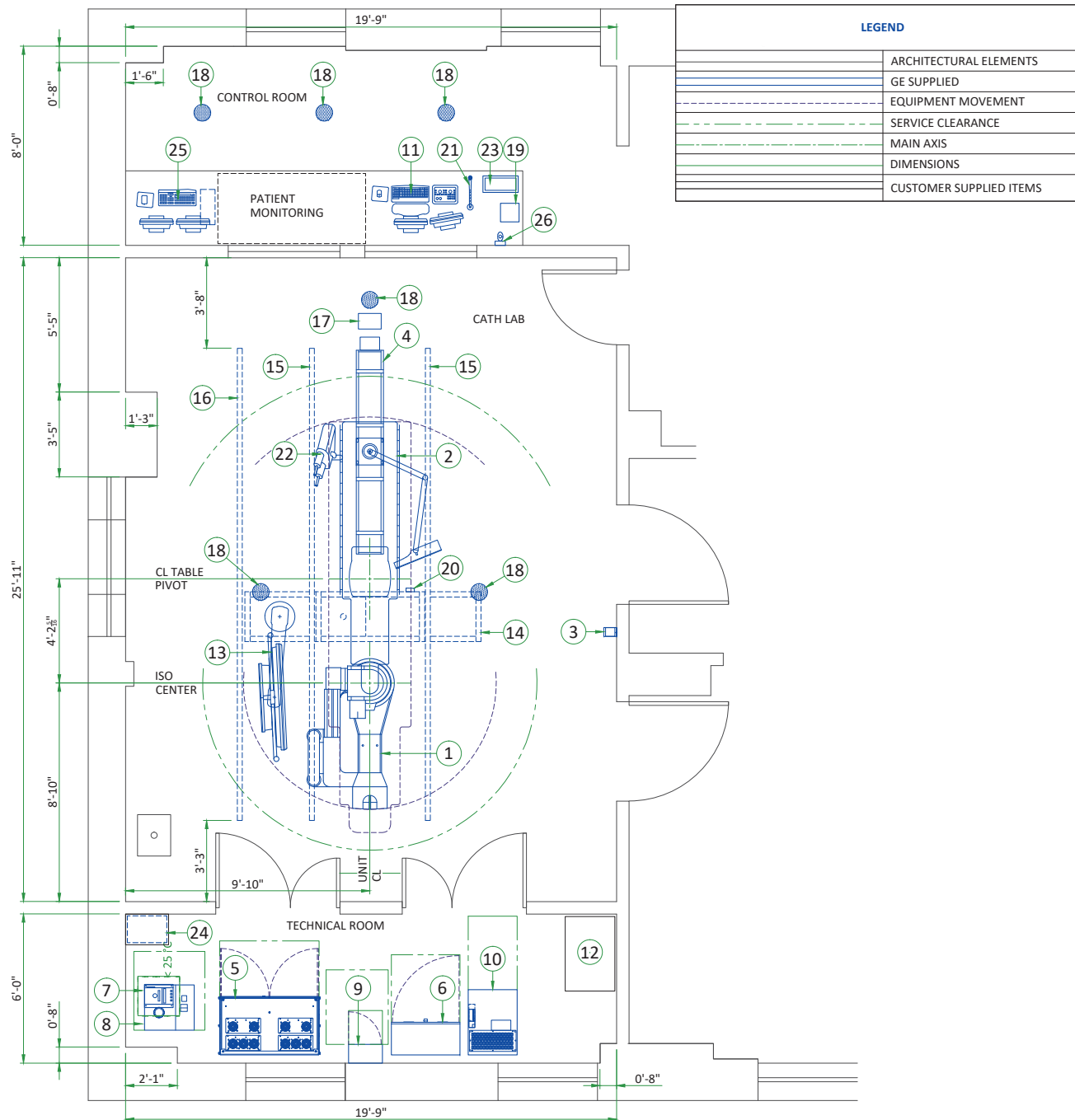


Existing vacant Space



ANGIO Suite, Ph 1



| EQUIPMENT LAYOUT | | | |
|---------------------------|---|-----------------------|-------------|
| ITEM | DESCRIPTION | DIMENSIONS LxWxH (in) | WEIGHT (lb) |
| 1 | LC GANTRY | 61x42x88 | 1655 |
| 2 | OMEGA V LONG PATIENT TABLE | 131x40x31 | 1635 |
| 3 | XRAY BUZZER | - | 1 |
| 4 | MAVIG RAD SHIELD AND LAMP WITH 2.5M CEILING TRACK | - | 205 |
| 5 | C-FRT CABINET | 47.5x28x78 | 1193 |
| 6 | POWER DISTRIBUTION UNIT (PDU) | 33x15.7x69 | 628 |
| 7 | DETECTOR CHILLER | 8x14x15 | 32 |
| 8 | COOLIX 4100 WATER CHILLER | 22x24x44 | 265 |
| 9 | MAIN DISCONNECT PANEL (MDP) | 9x16x24 | 19 |
| 10 | FLUORO UPS UL | 27x31.5x71 | 1169 |
| 11 | OPERATOR CONSOLE | - | 20 |
| 12 | CUSTOMER SUPPLIED STORAGE CABINET | - | - |
| 13 | MAVIG LDM SUSPENSION WITH TWO BACKUP MONITORS | - | 547 |
| 14 | MONITOR SUSPENSION LONG BRIDGE | 114x25.5x2 | 225 |
| 15 | MONITOR SUSPENSION RAILS (x2) | L=186 | 139 |
| 16 | CABLE DRAPE RAIL (CUSTOMER SUPPLIED) | - | - |
| 17 | EXTERNAL TRANSFORMER FOR LED LAMP (IN CEILING) | - | 17 |
| 18 | VITALINQ SPEAKER (x6) | - | - |
| 19 | VITALINQ CONSOLE | - | - |
| 20 | VITALINQ MICROPHONE (ON LDM) | - | - |
| 21 | VITALINQ MICROPHONE (ON COUNTER TOP) | - | - |
| 22 | TABLE MOUNTED INJECTOR | - | 146 |
| 23 | INJECTOR CONTROL | - | - |
| 24 | INJECTOR ELECTRONICS ON CUSTOMER SUPPLIED SHELF | - | - |
| 25 | ADVANTAGE WORKSTATION | 39.4x27.2 | 22 |
| 26 | BOLUS CHASE HANDSWITCH | - | 2 |
| EXAM ROOM HEIGHT | | | |
| FINISHED FLOOR TO CEILING | | | min. 9'-0" |
| | | | rec. 10'-0" |

GE proposed Layout