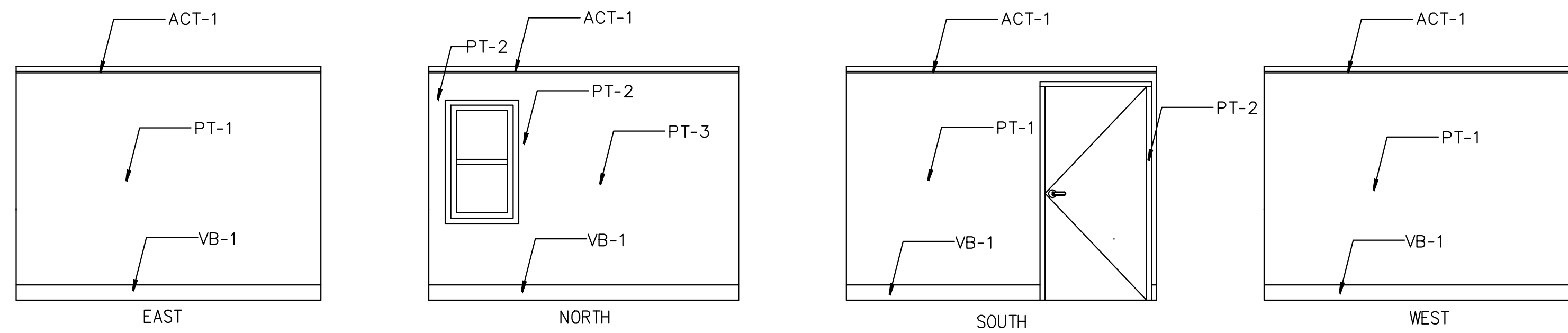
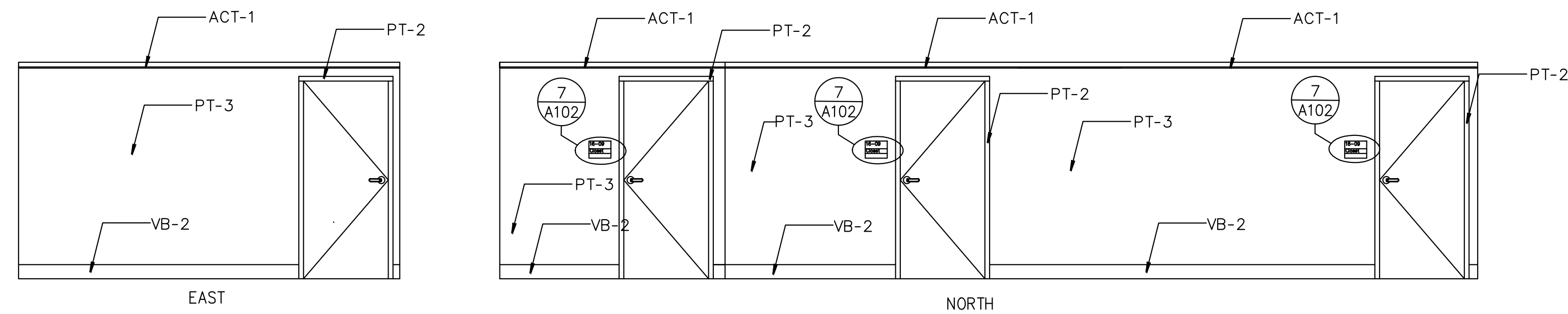


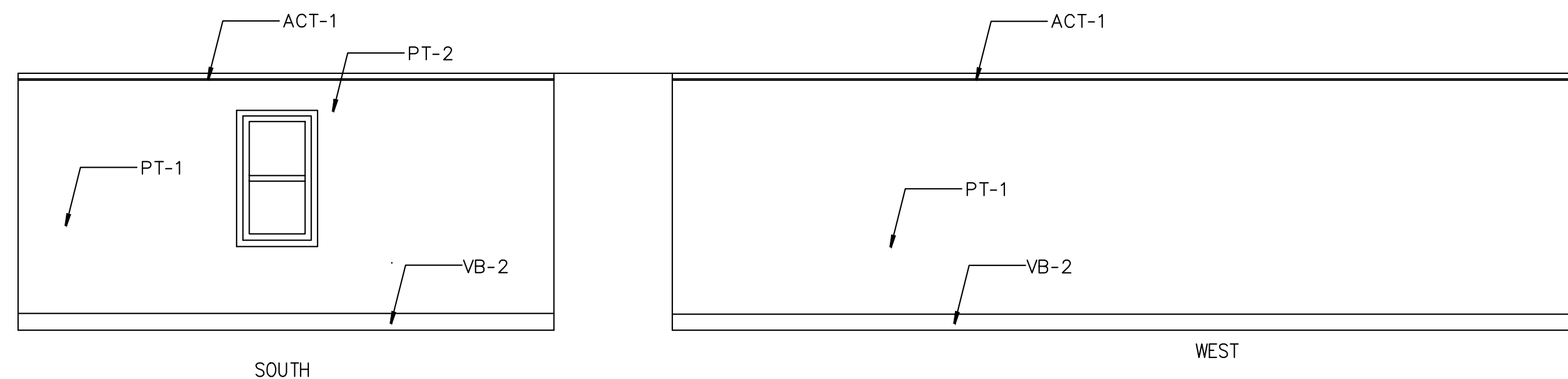
**1 ELEVATION - (16-10) AMINISTRATIVE OFFICE**  
1/4"=1'-0"



**2 ELEVATION - (16-12) AMINISTRATIVE OFFICE**  
1/4"=1'-0"



**3 ELEVATION - (16-01) EDUCATION OFFICE SUITE (NORTH AND EAST)**  
1/4"=1'-0"



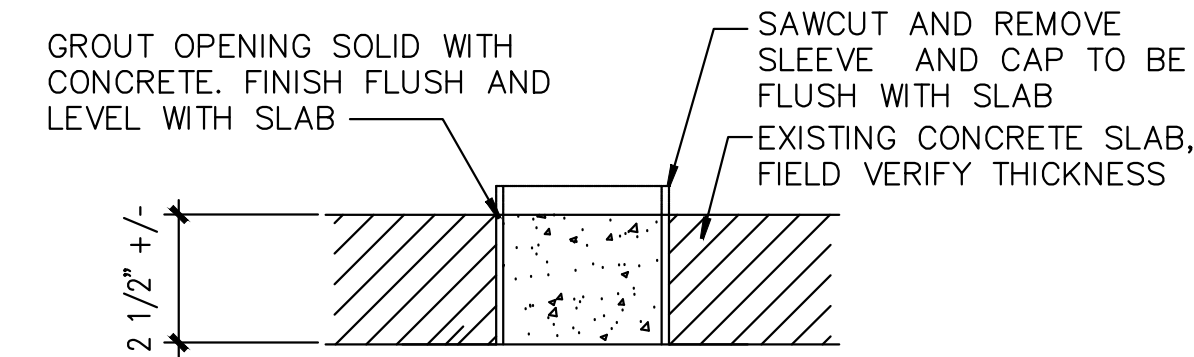
**4 ELEVATION - (16-01) EDUCATION OFFICE SUITE (SOUTH AND WEST)**  
1/4"=1'-0"



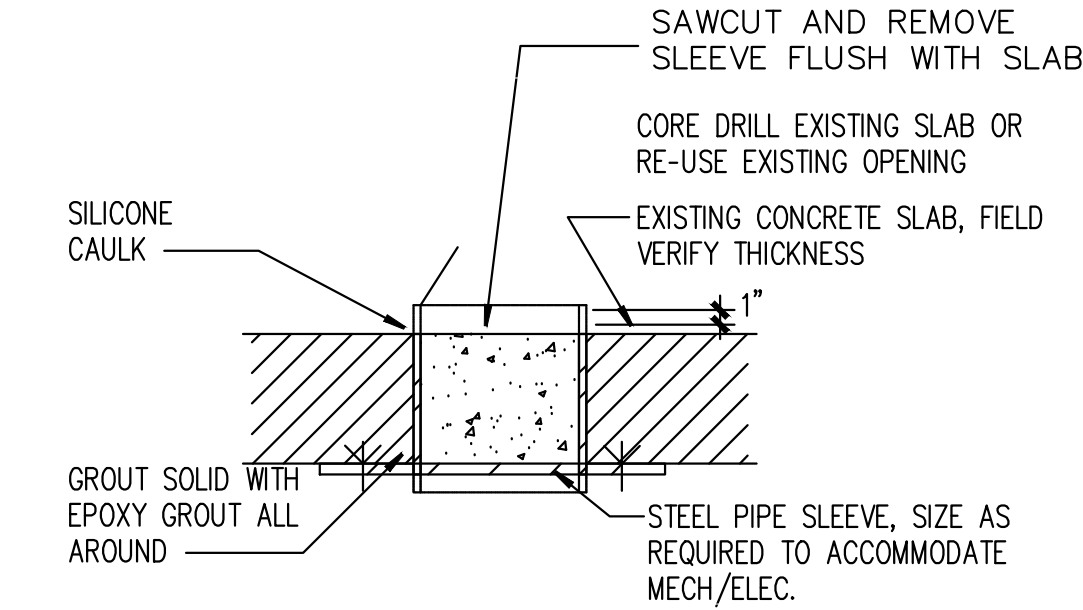
**5 FLOORING PLAN**  
1/8"=1'-0"

**GENERAL FLOORING FINISH NOTES**

- LOCATE AND INFILL ALL FLOOR DRAINS WITH GROUT. LEAVE DRAINS TO BE REUTILIZED FOR NEW RESTROOMS UNDISTURBED. SEE DETAIL 6/A-102
- REMOVE EXISTING FLOORING MATERIALS IN ALL LOCATIONS WHERE EXISTING FLOORING IS LOCATED. THIS INCLUDES ALL MATERIALS INCLUDING TILE, CARPETING OR ANY OTHER EXISTING FLOORING FINISHES. (REFER TO DETAIL 8 DRAWING A-102)
- GRIND EXISTING TERRAZZO SURFACES TO LEVEL SURFACE THAT CAN RECIEVE A NEW CEMENTITIOUS FLOOD COAT. (REFER TO DETAIL 8 DRAWING A-102)
- FLOOD COAT ALL FLOORS TO ACHIEVE A SMOOTH EVEN AND LEVEL SURFACE THAT IS READY TO ACCEPT NEW FINISHES AS INDICATED ON FLOORING PLAN.
- PROVIDE FLOORING AS INDICATED IN FLOORING LEGEND AND FLOORING PLAN. INSTALL ALL FLOORING PRODUCTS PER THE MANUFACTURE'S RECOMMENDED INSTALLATION SPECIFICATIONS.



**6 DRAIN INFILL DETAIL (TYP)**  
1 1/2"=1'-0"

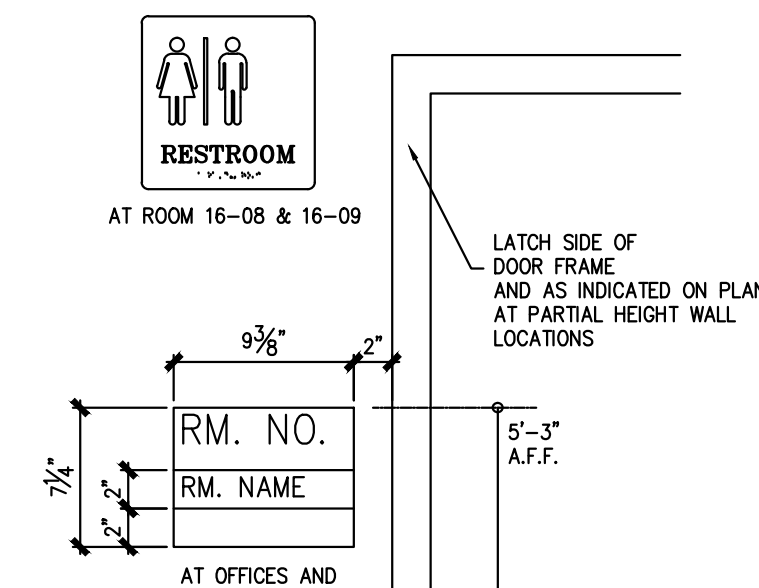


**9 EXTERIOR PIPING PENETRATION INFILL**  
1 1/2"=1'-0"

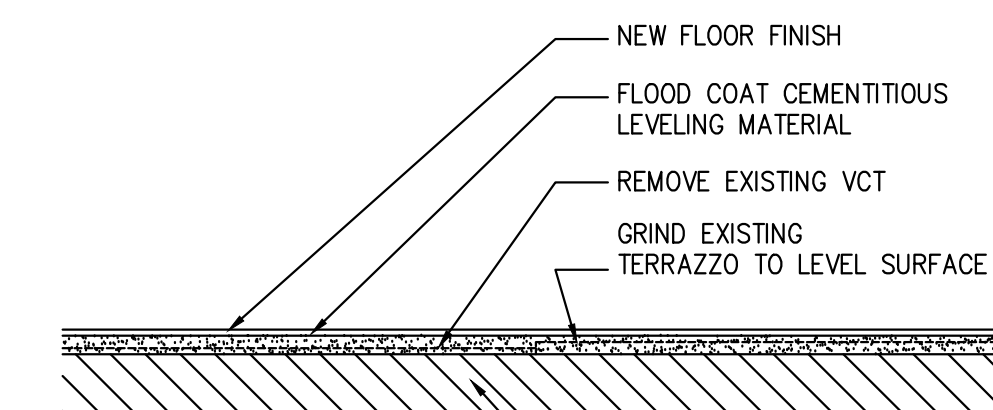
**GENERAL NOTES:**

- CORE DRILL CONCRETE SLABS & CMU PARTITIONS AS REQUIRED FOR MECH/ELECTRICAL SERVICES. PROVIDE OPENING PIPE SLEEVES PER 6/A-102. CORE DRILL CONCRETE BEAMS PER 8/A-102. REFER TO HVAC, PLUMBING, FIRE PROTECTION, & ELECTRICAL DRAWINGS & SPECIFICATIONS FOR LOCATIONS AND SIZES.
- DIMENSIONS ARE CLEAR DIMENSIONS FROM FINISHED GWB OR PLASTER, UNLESS NOTED OTHERWISE.
- WHEN REMOVALS ARE COMPLETE, PATCH ALL HOLES AND REPAIR ALL DAMAGE TO EXISTING CONSTRUCTION. LEAVE ALL SURFACES SMOOTH, LEVEL, PLUMB, ALIGNED WITH ADJACENT SURFACES, & READY TO ACCEPT FINISHES.
- USE WALL TYPE 2 FOR NEW WALL PARTITIONS UNLESS NOTED OTHERWISE.
- PROVIDE FIRESTOPPING FOR ALL FLOOR & WALL PENETRATIONS PER 7&6/PP-100
- INFILL SLAB & ROOF OPENINGS PER 6/A-102 & 8/A-102 RESPECTIVELY.
- REFER TO A-100 FOR FINISH SCHEDULE AND DOOR SCHEDULES. REFER TO A-103 FOR INTERIOR SIGNAGE SCHEDULE.

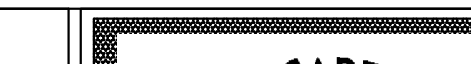
FLOORING LEGEND	
	2x2 CARPET TILE
	CERAMIC TILE
	1x1 VCT
	SEALED CEMENT



**7 ELEVATION - TYPICAL ROOM SIGN**  
1"=1'-0"



**8 FLOORING DETAIL - TYPICAL**  
NTS

Revisions		CONSULTANTS:	ARCHITECT/ENGINEERS:	Drawing Title		Project Title		Project Number		
				FLOORING PLAN, ELEVATIONS AND DETAILS		RENOVATE FOR EDUCATION SERVICE AND ADMINISTRATIVE SPACE.		528A7-12-732		
								Building Number		
								16		
								Drawing Number		
								A-102		
								7 OF 23		
Revisions:		Date		Approved: Project Director		Location		SYRACUSE VAMC		
				Date		Checked		Drawn		
				7/31/2012		CF		AZH		